



PRICED AT  
**\$861,975**

 2837 Sq Ft

 4 Beds

 3.5 Baths

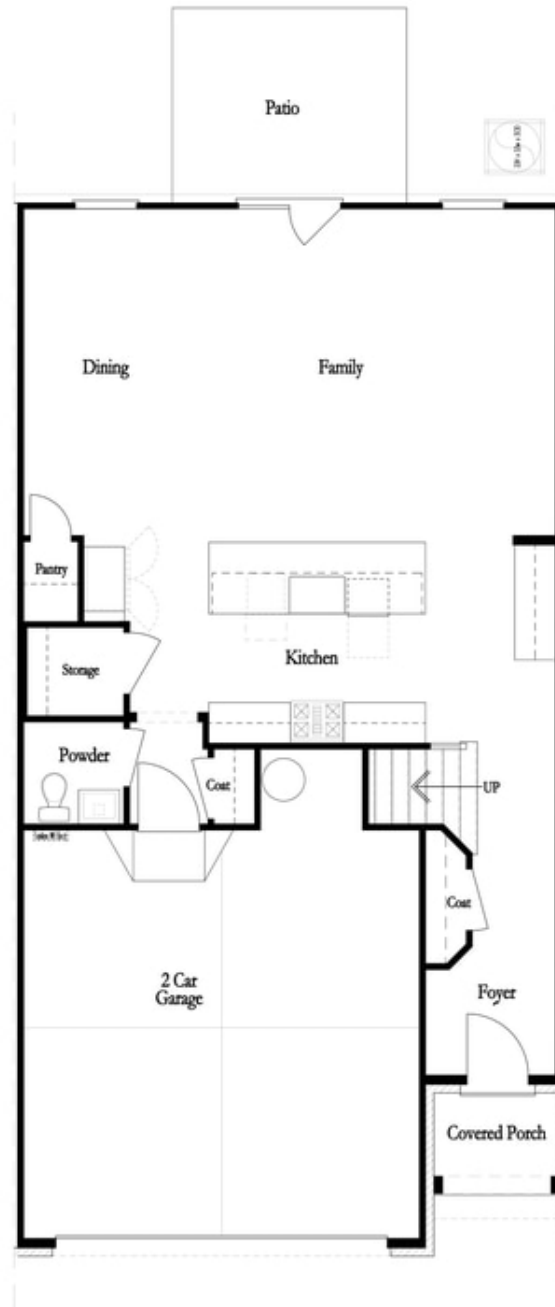
 2 Car Garage

 3.0 Story

**FABULOUS FALL SAVINGS!!!** The Ellington @ Wards Crossing is 4 bedrooms, 3.5 baths END UNIT. This home has over 2800 square feet of functional living space! With the living level located on the main, it truly lives like a single-family home. The beautifully designed entertainer's kitchen features stacked to the ceiling, white Bell cabinetry with a Driftwood island detail, Kohler farm sink and GE Profile appliances. The kitchen opens up to the family room, allowing for the perfect space to host loved ones or have a quiet night at home, lying next to your linear gas fireplace, which is detailed beautifully with a white quartzite surround. Triple slider door opens to a covered porch and a gorgeous fenced in backyard with wooded views! Gorgeous sunkissed hardwoods throughout all main living areas and the primary bedroom. The primary bathroom has both a soaking tub and walk in shower with beautiful fawn gloss subway tile and venetian flat pebble tiles. The fourth floor of the home includes the super spacious fourth bedroom and bathroom. This space could also easily function as a media room or playroom. This home is Energy Star certified and built with the finest finishing touches, including a Rheem ...

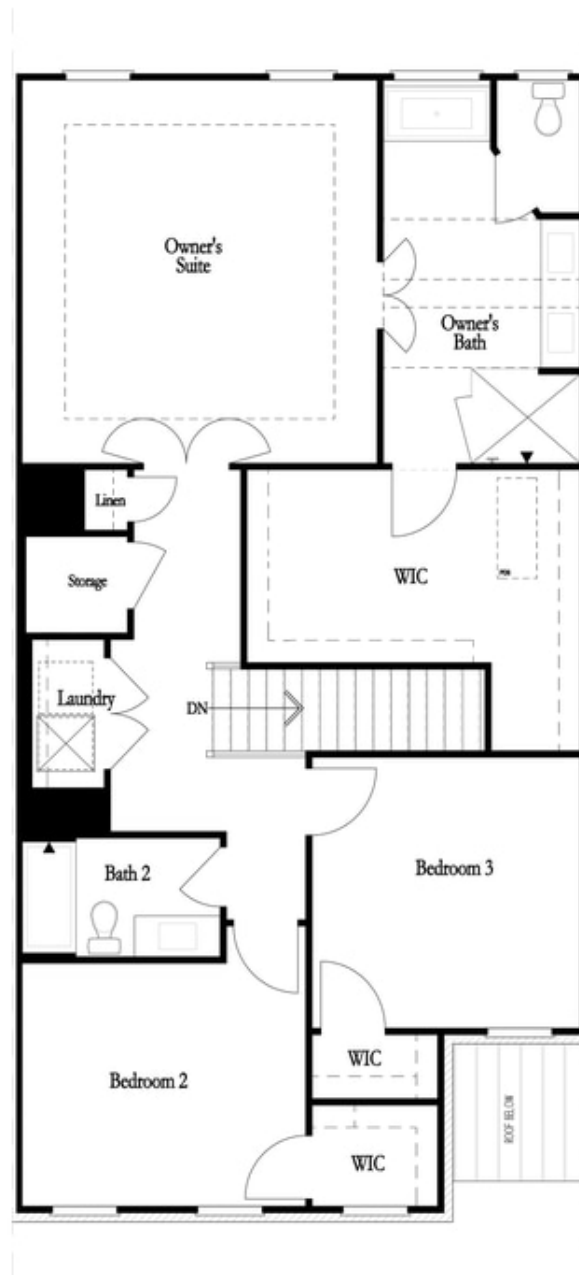
**Want to Know More  
About This Home?**

CONTACT OUR COMMUNITY SALES MANAGER  
Call Us @ 770.521.2151



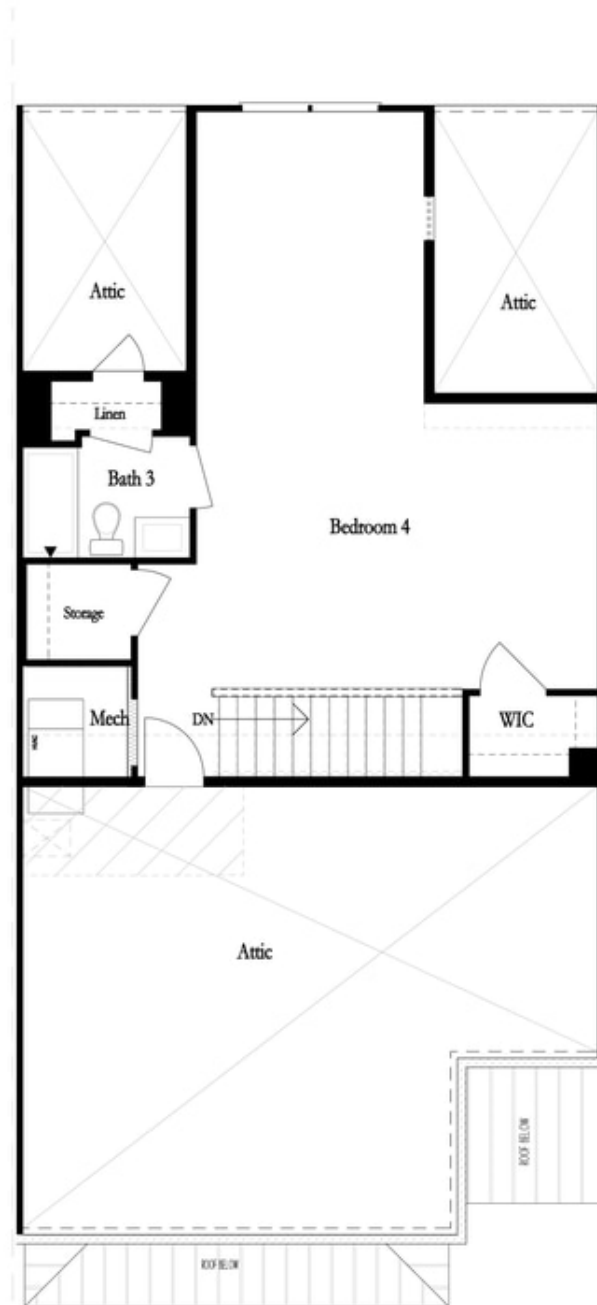
**Want to Know More  
About This Home?**

CONTACT OUR COMMUNITY SALES MANAGER  
Call Us @ 770.521.2151



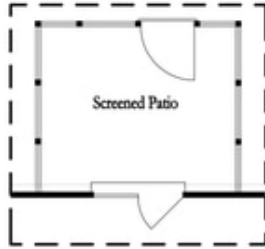
**Want to Know More  
About This Home?**

CONTACT OUR COMMUNITY SALES MANAGER  
Call Us @ 770.521.2151

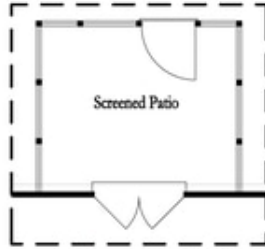


**Want to Know More  
About This Home?**

CONTACT OUR COMMUNITY SALES MANAGER  
Call Us @ 770.521.2151



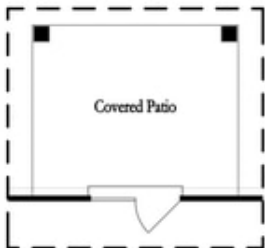
*Opt. Screened Patio  
 w/ Std Garden Door*



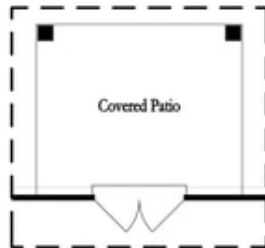
*Opt. Screened Patio  
 w/ French Door*



*Opt. Screened Patio  
 w/ Slider Door*



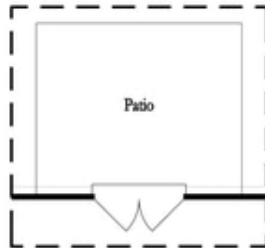
*Opt. Covered Patio  
 w/ Std Garden Door*



*Opt. Covered Patio  
 w/ French Door*



*Opt. Covered Patio  
 w/ Slider Door*



*Opt. French Door*



*Opt. Slider Door*

**Want to Know More  
 About This Home?**

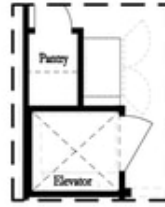
CONTACT OUR COMMUNITY SALES MANAGER  
 Call Us @ 770.521.2151



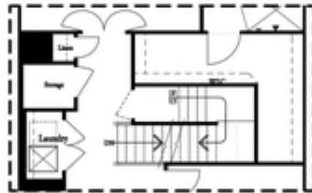
*Opt. Fireplace*



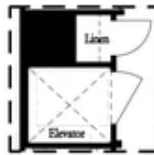
*Opt. Linear Fireplace*



*Opt. Elevator  
 First Floor*



*2nd Floor Stairs to 3rd Floor*



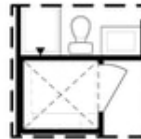
*Opt. Elevator  
 Second Floor*



*Owner's Suite & Bath  
 \*No Trey or Vaulted Ceilings w/ 3rd Floor*



*Opt. Open Rail on 3rd Floor*



*Opt. Elevator  
 Third Floor*

OPTIONS

**Want to Know More  
 About This Home?**

CONTACT OUR COMMUNITY SALES MANAGER  
 Call Us @ 770.521.2151