



PRICED AT
\$836,130

 2837 Sq Ft

 4 Beds

 3.5 Baths

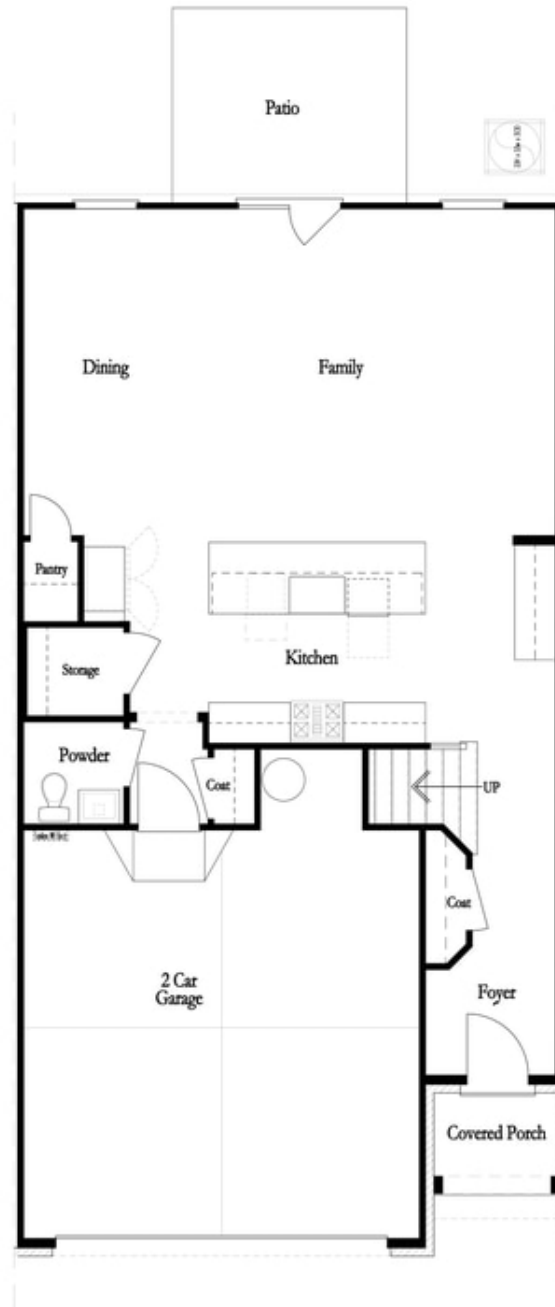
 2 Car Garage

 3.0 Story

FALL into SAVINGS!! Located in the heart of Johns Creek at Ward's Crossing, a Providence Group community! This floorplan features 3 story living with 4 bedrooms, 3.5 baths and over 2800 square feet of functional living space. With the living level located on the main, this home truly lives like a single-family home. The beautifully designed entertainer's kitchen opens up to the family room, allowing for the perfect space to host loved ones or have a quiet night at home, lying next to your gas fireplace, which is detailed beautifully with a white quartzite surround. The kitchen features white Bell cabinetry with an oatmeal stain island to accent. Gorgeous white quartz, a white Kohler farm sink and luxe gold hardware and plumbing fixtures highlight the designer details. Triple slider doors open up to a covered porch and your gorgeous fenced in backyard with wooded views! Beautiful hardwoods throughout all main living areas and the primary bedroom. The primary bathroom features both a soaking tub and walk in shower with fawn gloss subway tiles and venetian flat pebble floor. The third floor of the home features the extra large fourth bedroom with en suite that can also easily function as a ...

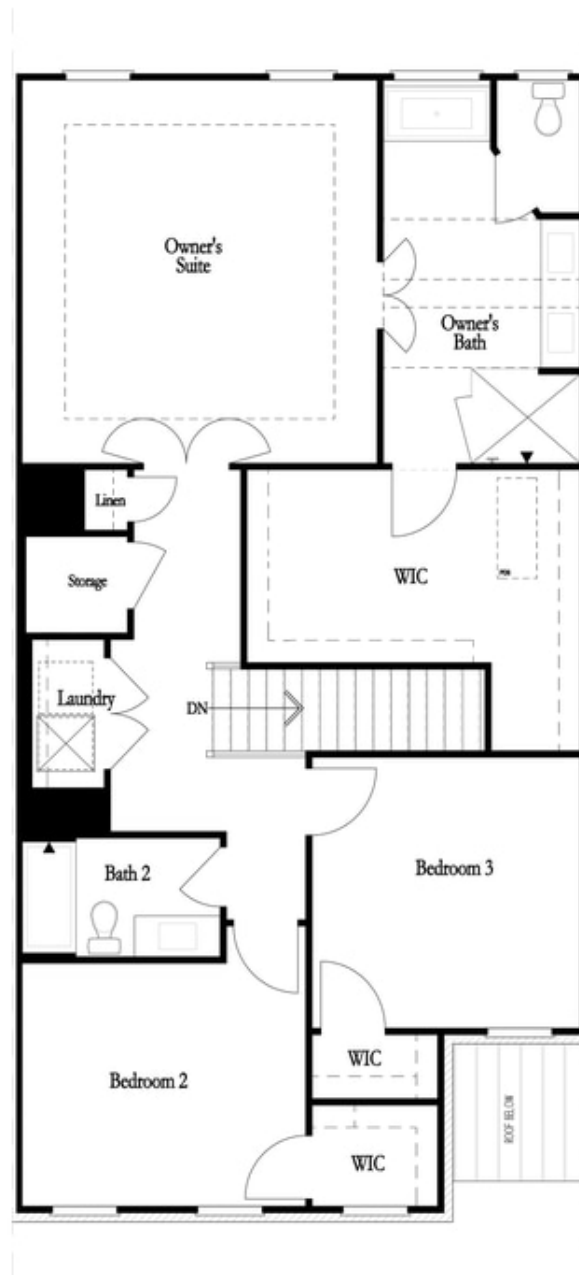
**Want to Know More
About This Home?**

CONTACT OUR COMMUNITY SALES MANAGER
Call Us @ 770.521.2151



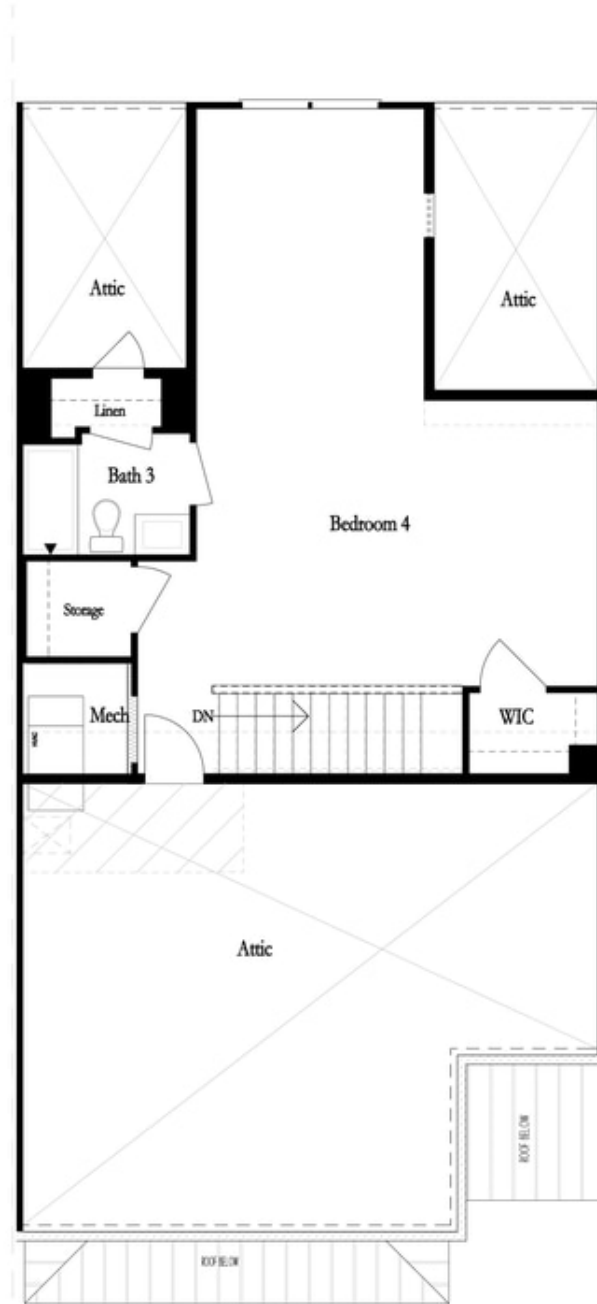
**Want to Know More
About This Home?**

CONTACT OUR COMMUNITY SALES MANAGER
Call Us @ 770.521.2151



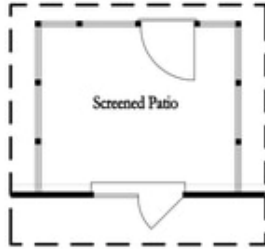
**Want to Know More
About This Home?**

CONTACT OUR COMMUNITY SALES MANAGER
Call Us @ 770.521.2151

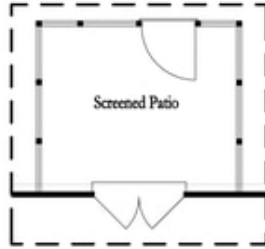


**Want to Know More
About This Home?**

CONTACT OUR COMMUNITY SALES MANAGER
Call Us @ 770.521.2151



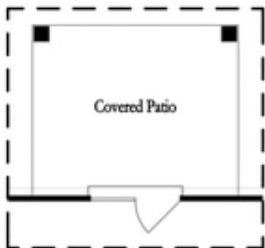
*Opt. Screened Patio
 w/ Std Garden Door*



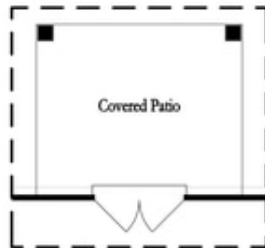
*Opt. Screened Patio
 w/ French Door*



*Opt. Screened Patio
 w/ Slider Door*



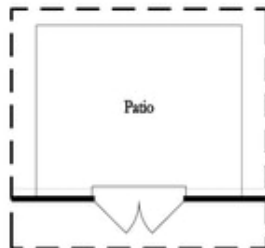
*Opt. Covered Patio
 w/ Std Garden Door*



*Opt. Covered Patio
 w/ French Door*



*Opt. Covered Patio
 w/ Slider Door*



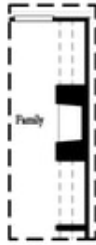
Opt. French Door



Opt. Slider Door

**Want to Know More
 About This Home?**

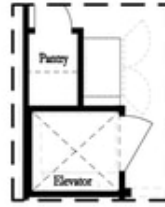
CONTACT OUR COMMUNITY SALES MANAGER
 Call Us @ 770.521.2151



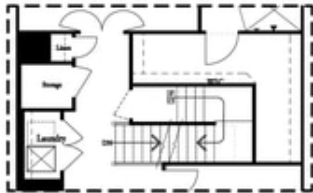
Opt. Fireplace



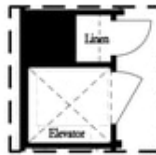
Opt. Linear Fireplace



*Opt. Elevator
 First Floor*



2nd Floor Stairs to 3rd Floor



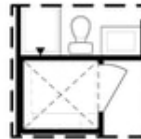
*Opt. Elevator
 Second Floor*



*Owner's Suite & Bath
 No Trey or Vaulted Ceilings w/ 3rd Floor



Opt. Open Rail on 3rd Floor



*Opt. Elevator
 Third Floor*

OPTIONS

**Want to Know More
 About This Home?**

CONTACT OUR COMMUNITY SALES MANAGER
 Call Us @ 770.521.2151