



PRICED AT
\$860,255

 2837 Sq Ft

 4 Beds

 3.5 Baths

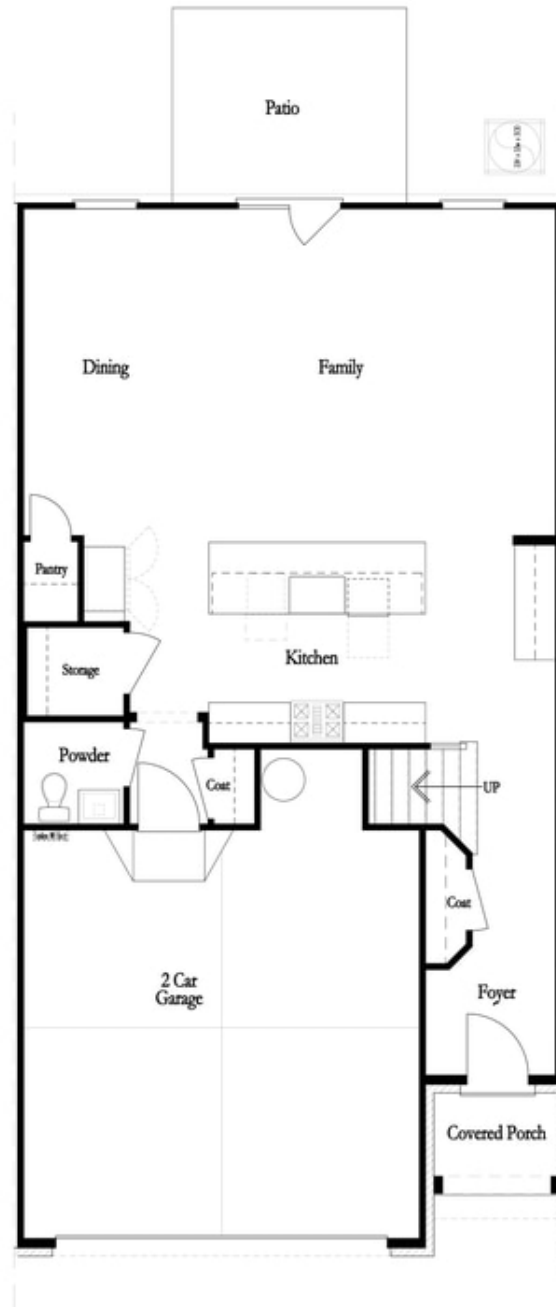
 2 Car Garage

 3.0 Story

FABULOUS FALL SAVINGS!! The Ellington @ Wards Crossing features 4 bedrooms, 3.5 baths and over 2800 square feet of functional living space! With the living level located on the main, this home truly lives like a single-family home. The beautifully designed entertainer's kitchen features white Bell cabinetry with a slate island detail, mosaic tile backsplash, Kohler farm sink and GE Profile appliances. The kitchen opens up to the family room, allowing for the perfect space to host loved ones or have a quiet night at home, lying next to your gas fireplace, which is detailed beautifully with a white quartzite surround. Triple slider door opens to a covered porch opens and a gorgeous fenced in backyard with wooded views! Gorgeous white oak hardwoods throughout all main living areas and the primary bedroom. The primary bathroom has both a soaking tub and walk in shower with beautiful arctic white subway tile and winter frost polished mosaic tile shower floor. The fourth floor of the home includes the super spacious fourth bedroom and bathroom. This space could also easily function as a media room or playroom. This home is Energy Star certified and built with the finest finishing touches, including a Rheem ...

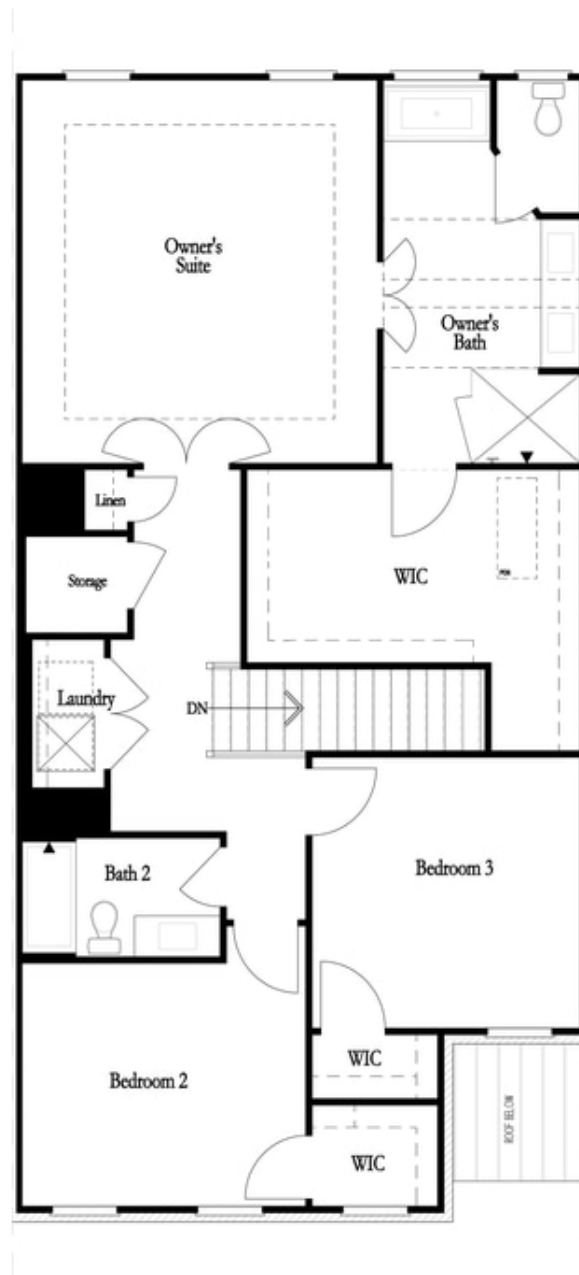
**Want to Know More
About This Home?**

CONTACT OUR COMMUNITY SALES MANAGER
Call Us @ 770.521.2151



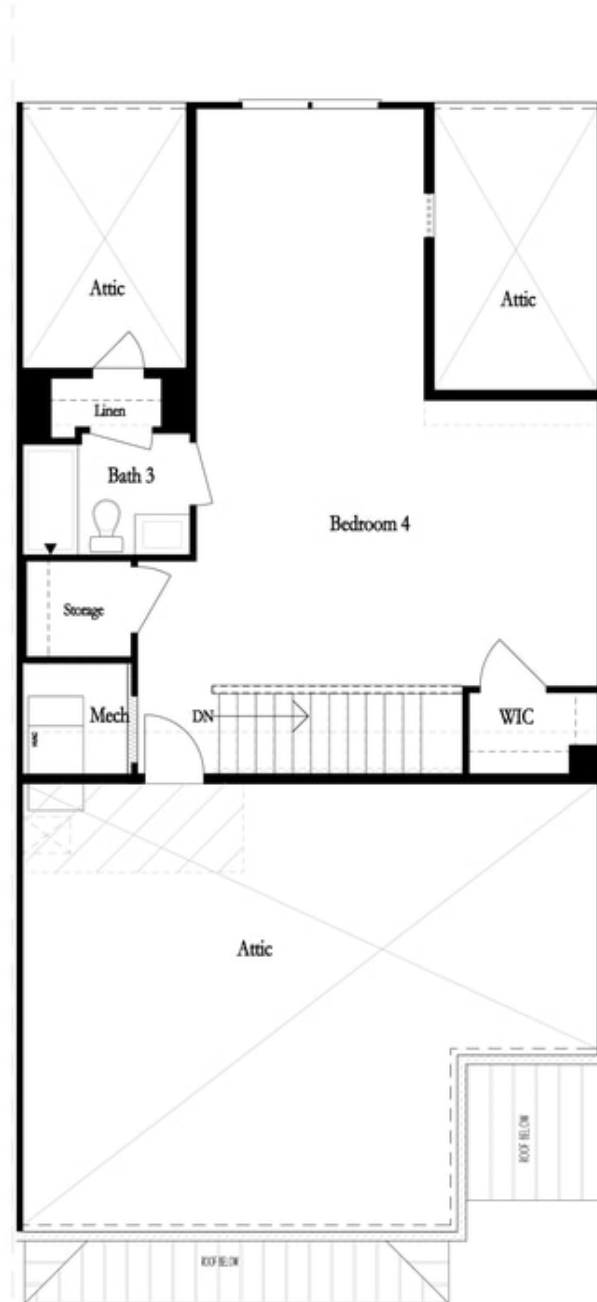
**Want to Know More
About This Home?**

CONTACT OUR COMMUNITY SALES MANAGER
Call Us @ 770.521.2151



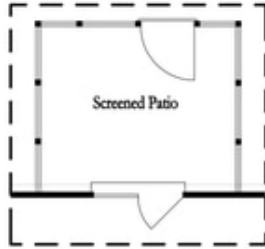
**Want to Know More
About This Home?**

CONTACT OUR COMMUNITY SALES MANAGER
Call Us @ 770.521.2151

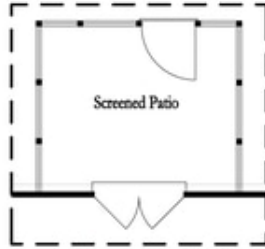


**Want to Know More
About This Home?**

CONTACT OUR COMMUNITY SALES MANAGER
Call Us @ 770.521.2151



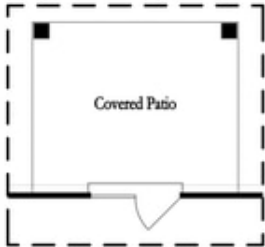
*Opt. Screened Patio
w/ Std Garden Door*



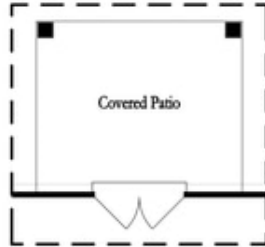
*Opt. Screened Patio
w/ French Door*



*Opt. Screened Patio
w/ Slider Door*



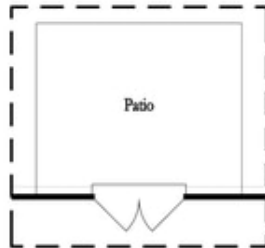
*Opt. Covered Patio
w/ Std Garden Door*



*Opt. Covered Patio
w/ French Door*



*Opt. Covered Patio
w/ Slider Door*



Opt. French Door



Opt. Slider Door

**Want to Know More
About This Home?**

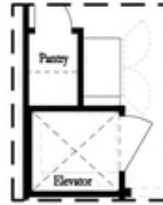
CONTACT OUR COMMUNITY SALES MANAGER
Call Us @ 770.521.2151



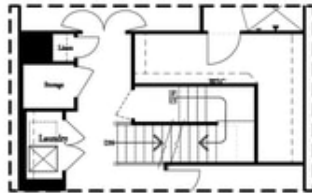
Opt. Fireplace



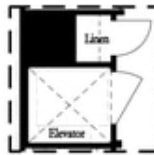
Opt. Linear Fireplace



*Opt. Elevator
 First Floor*



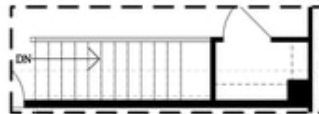
2nd Floor Stairs to 3rd Floor



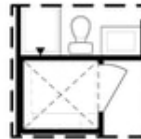
*Opt. Elevator
 Second Floor*



*Owner's Suite & Bath
 No Trey or Vaulted Ceilings w/ 3rd Floor



Opt. Open Rail on 3rd Floor



*Opt. Elevator
 Third Floor*

OPTIONS

**Want to Know More
 About This Home?**

CONTACT OUR COMMUNITY SALES MANAGER
 Call Us @ 770.521.2151