



PRICED AT
\$834,125

 2837 Sq Ft

 4 Beds

 3.5 Baths

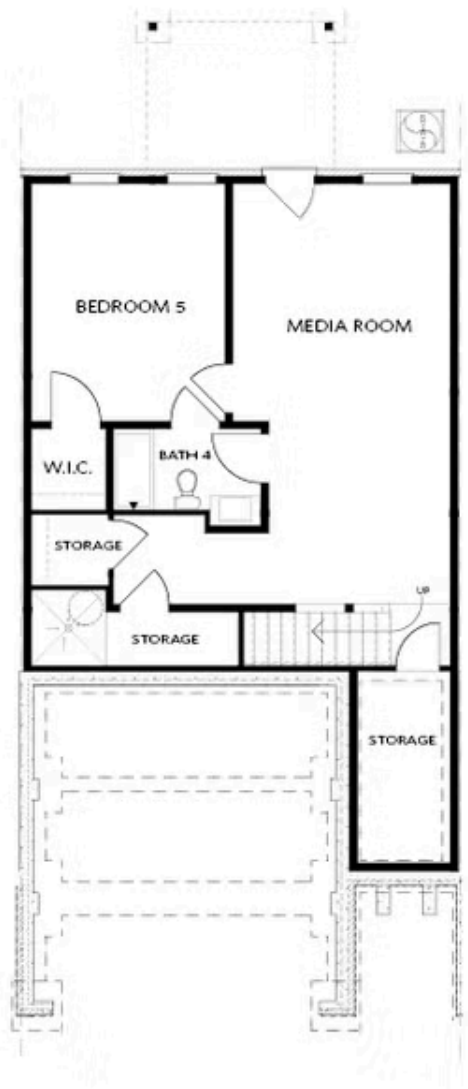
 2 Car Garage

 3.0 Story

Elevate Your Savings!! Enjoy \$10,000 incentive to use towards closing costs, blinds, washer, dryer, fridge or a loan rate buydown. Choose the path to homeownership that fits your life - with low rates, appliances, closing costs, and more. Offer ends February 28, 2026. Welcome to The Ellington End Unit @ Wards Crossing. This home is 4 bedrooms, 3.5 baths and offers over 2800 square feet of functional home living space! With the living level located on the main, it truly lives like a single-family home. The beautifully designed entertainer's kitchen features cabinets stacked to the ceiling, Bell cabinetry, and GE Profile appliances. The kitchen opens up to the family room, allowing for the perfect space to host loved ones or have a quiet night at home, lying next to your linear gas fireplace, which is detailed beautifully with a white quartzite surround. Triple slider door opens to a covered porch and a gorgeous fenced in backyard with wooded views! Gorgeous hardwoods throughout all main living areas and the primary bedroom. The primary bathroom has both a soaking tub and walk in shower with beautiful tile work throughout. The third floor of the home includes the super spacious fourth bedroom and ...

**Want to Know More
About This Home?**

CONTACT OUR COMMUNITY SALES MANAGER
Call Us @ 770.521.2151



BASEMENT

Elevation C, I, K

Want to Know More
About This Home?

CONTACT OUR COMMUNITY SALES MANAGER
Call Us @ 770.521.2151

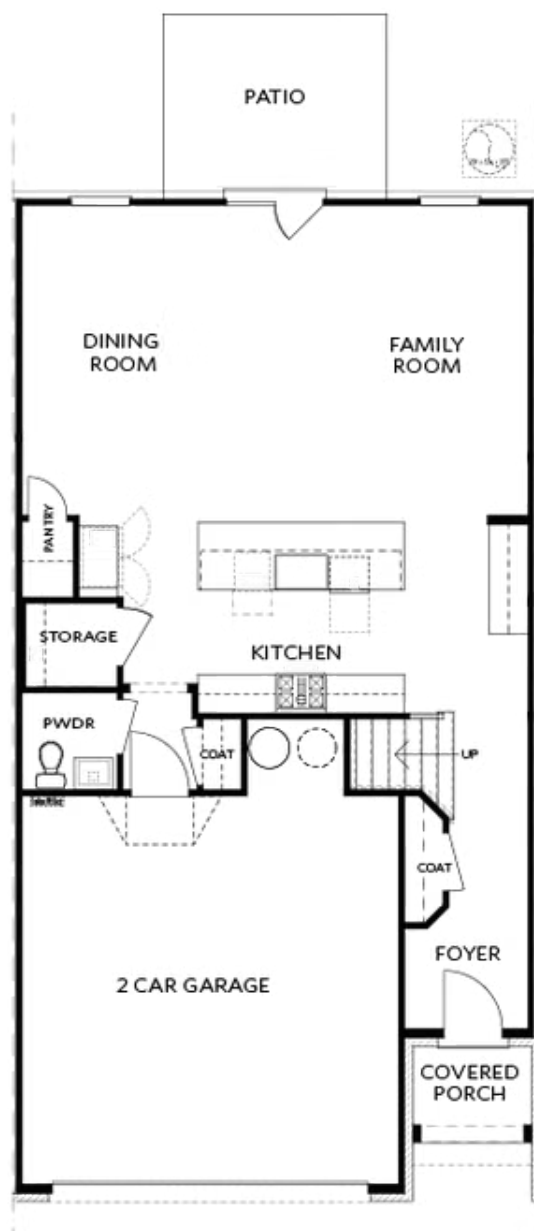


FIRST FLOOR

Elevation C, I, K

Want to Know More
About This Home?

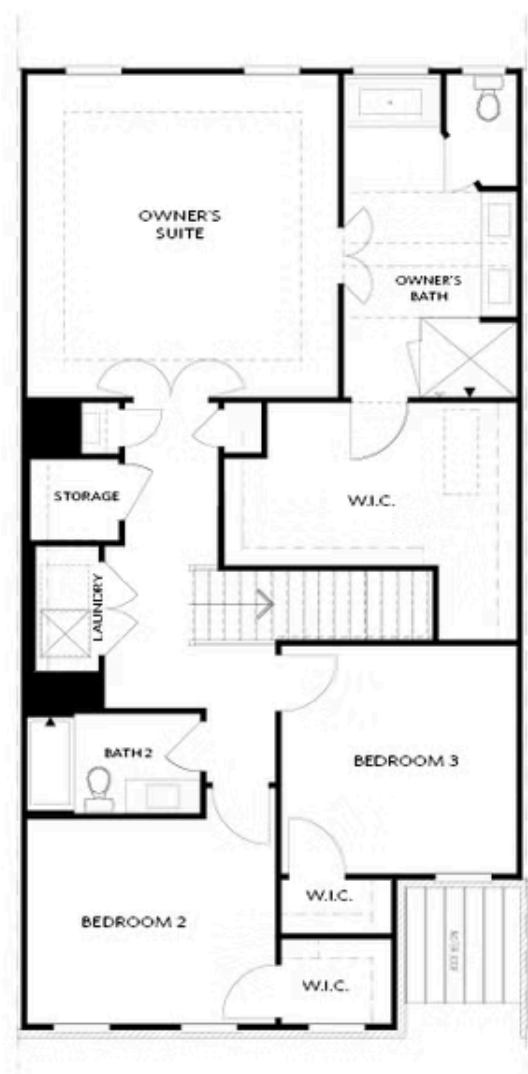
CONTACT OUR COMMUNITY SALES MANAGER
Call Us @ 770.521.2151



Elevations C, I, K

Want to Know More
About This Home?

CONTACT OUR COMMUNITY SALES MANAGER
Call Us @ 770.521.2151

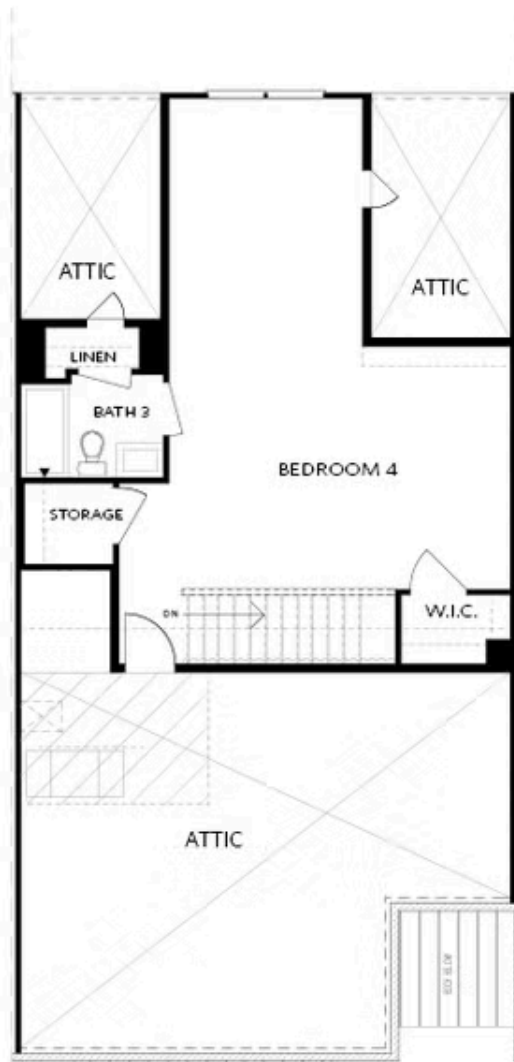


SECOND FLOOR

Elevation C, I, K

Want to Know More
About This Home?

CONTACT OUR COMMUNITY SALES MANAGER
Call Us @ 770.521.2151

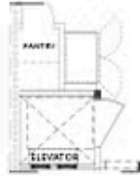


THIRD FLOOR

Elevation C, I, K

Want to Know More
About This Home?

CONTACT OUR COMMUNITY SALES MANAGER
Call Us @ 770.521.2151



Opt. Elevator
First Floor



Opt. Fireplace



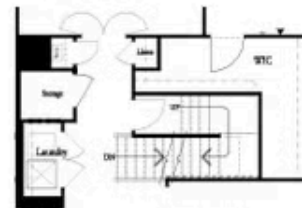
Opt. Linear Fireplace



Owner's Suite & Bath
*No Trey or Vaulted Ceilings w/ 3rd Floor



Opt. Elevator
Second Floor



2nd Floor Stairs to 3rd Floor



Opt. Open Rail on 3rd Floor



Opt. Elevator
Third Floor

OPTIONS ON A SLAB WITH 3RD FLOOR

Want to Know More
About This Home?

CONTACT OUR COMMUNITY SALES MANAGER
Call Us @ 770.521.2151