




PRICED AT
\$847,835

 2800 Sq Ft

 4 Beds

 3.5 Baths

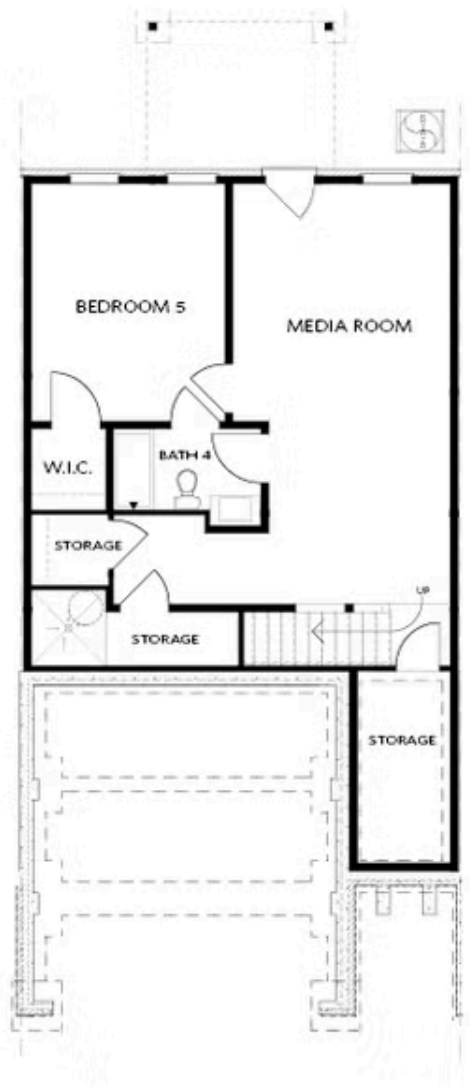
 2 Car Garage

 3.0 Story

New Year, New Home - Enjoy a 15K incentive that can be used toward closing costs, prepaids, the % down, or a refrigerator, washer & dryer, or blinds - or any combination of these options. Ward's Crossing by The Providence Group is in the highly sought-after Johns Creek community, known for its top-rated schools, recreational amenities, shopping, dining, and vibrant cultural scene. It was voted the Best Place to Live in the county by US News and World Report! END UNIT new-construction townhome in Johns Creek - The Ellington is currently under construction and will be move-in ready in MARCH/APRIL. Featuring a finished third floor, the Ellington offers four bedrooms and 3.5 baths. Main-level living includes the first floor, a two-car garage, a covered porch, a fenced backyard, and over 2,800 square feet of space! This spacious, thoughtfully designed townhome feels like a single-family home and is built with high-quality, eco-friendly materials, including Energy Star-rated Thermacrete, a superior party wall material. Located in the heart of Johns Creek, directly next to Johns Creek High School, with State Bridge Crossing Elementary just across the street! HOA dues cover professional community management, landscaping, and comprehensive building and structural insurance. Say goodbye ...

**Want to Know More
About This Home?**

CONTACT OUR COMMUNITY SALES MANAGER
Call Us @ 770.521.2151

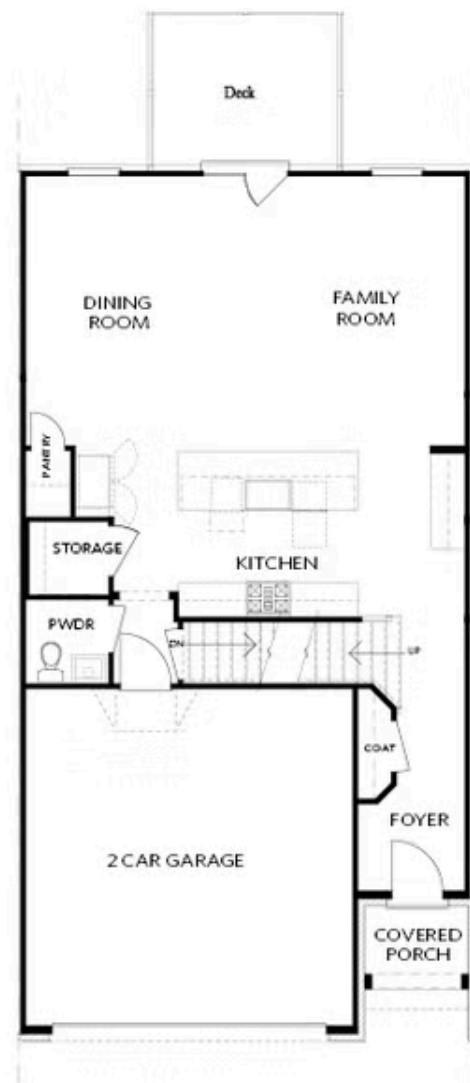


BASEMENT

Elevation C, I, K

Want to Know More
About This Home?

CONTACT OUR COMMUNITY SALES MANAGER
Call Us @ 770.521.2151

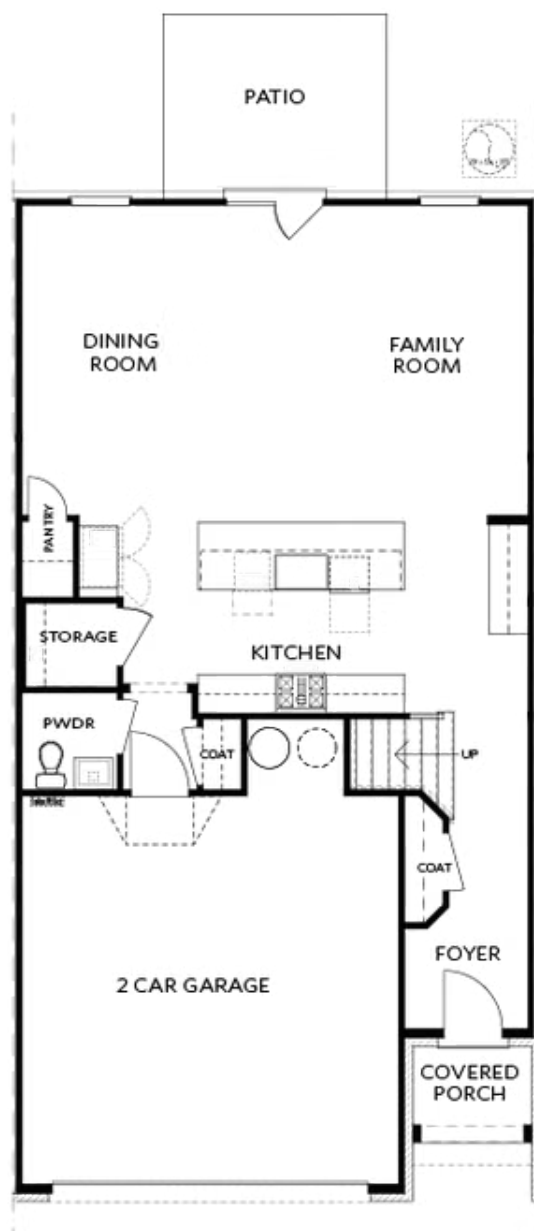


FIRST FLOOR

Elevation C, I, K

Want to Know More
About This Home?

CONTACT OUR COMMUNITY SALES MANAGER
Call Us @ 770.521.2151



Elevations C, I, K

Want to Know More
About This Home?

CONTACT OUR COMMUNITY SALES MANAGER
Call Us @ 770.521.2151

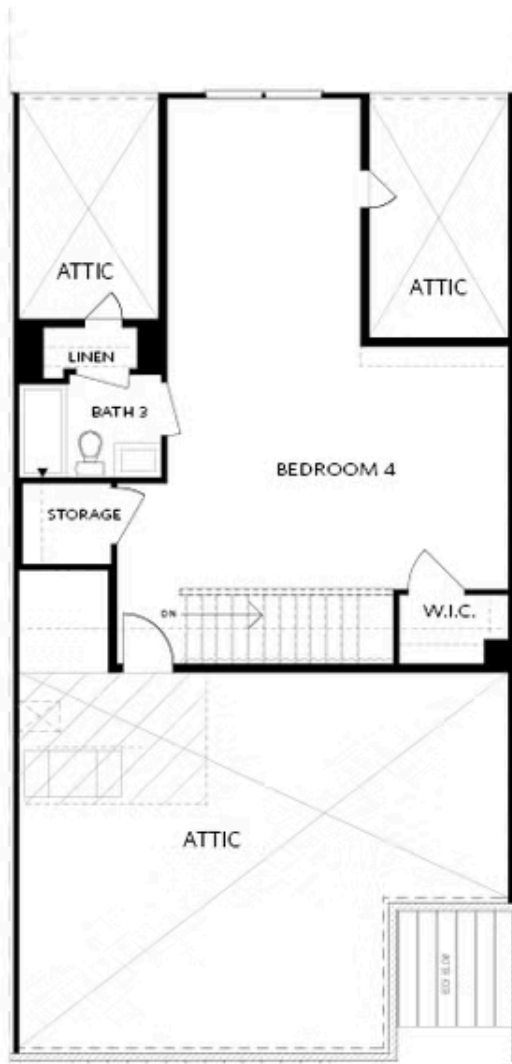


SECOND FLOOR

Elevation C, I, K

Want to Know More
About This Home?

CONTACT OUR COMMUNITY SALES MANAGER
Call Us @ 770.521.2151

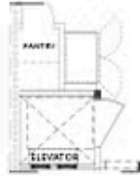


THIRD FLOOR

Elevation C, I, K

Want to Know More
About This Home?

CONTACT OUR COMMUNITY SALES MANAGER
Call Us @ 770.521.2151



Opt. Elevator
First Floor



Opt. Fireplace



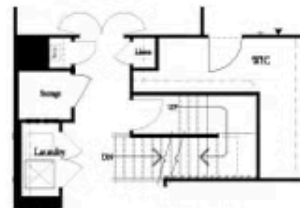
Opt. Linear Fireplace



Owner's Suite & Bath
*No Trey or Vaulted Ceilings w/ 3rd Floor



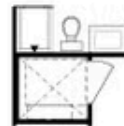
Opt. Elevator
Second Floor



2nd Floor Stairs to 3rd Floor



Opt. Open Rail on 3rd Floor



Opt. Elevator
Third Floor

OPTIONS ON A SLAB WITH 3RD FLOOR

Want to Know More
About This Home?

CONTACT OUR COMMUNITY SALES MANAGER
Call Us @ 770.521.2151