



PRICED AT  
**\$784,860**

 2629 Sq Ft

 4 Beds

 3.5 Baths

 2 Car Garage

 3.0 Story

Summer of Savings!! The Jacobsen I-4 @ Ward's Crossing in Johns Creek is a beautiful three story, four bedroom townhome offering over 2629 square feet of living space. THIS HOME IS UNDER CONSTRUCTION - MOVE IN June 2025! The plan features a first level entry with a secondary bedroom and bath as well as a two car garage. The second level features 10 ft. ceilings and a large, open-concept, light-filled space! Offering endless possibilities as you decorate your new home! The kitchen dazzles with white Bell Cabinetry stacked to the ceiling, beautiful quartz countertops and GE profile appliances including a gas range that vents to the outside! The gorgeous linear gas fireplace, with lush black tile, brings warmth and ambience to your winters! The sunroom also works perfectly as a reading or office area which opens up onto a beautiful outdoor deck. A powder room is also conveniently located on this level. Gorgeous black and gold light fixtures are featured throughout this home! Upstairs you will find a gorgeous primary bedroom and bathroom with a beautifully tiled walk in shower and luxurious soaking tub. The secondary bedrooms share the additional hall bath. This floor also conveniently hosts several closets for ...

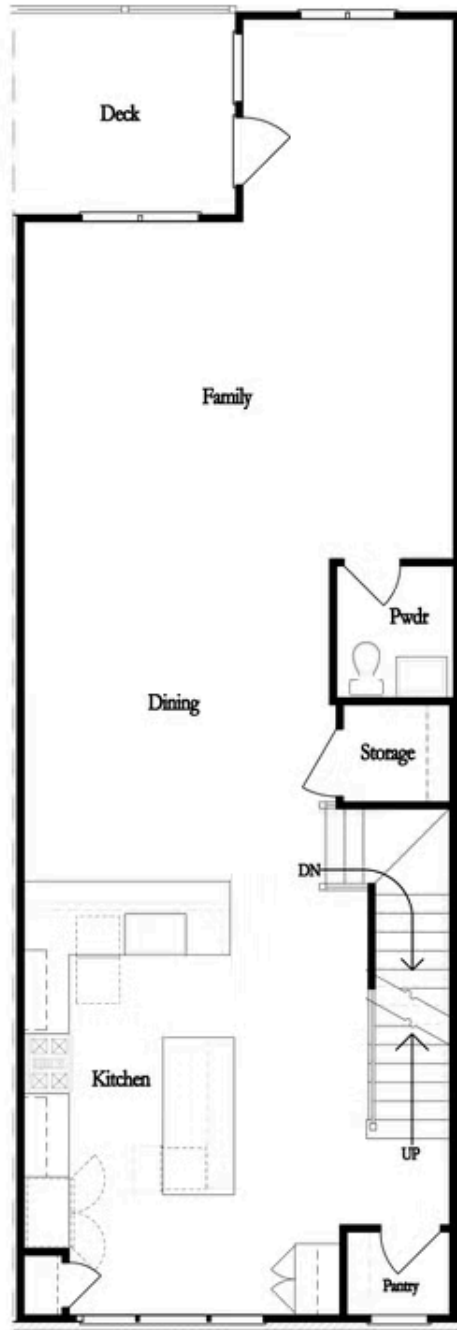
**Want to Know More  
About This Home?**

CONTACT OUR COMMUNITY SALES MANAGER  
Call Us @ 770.521.2151



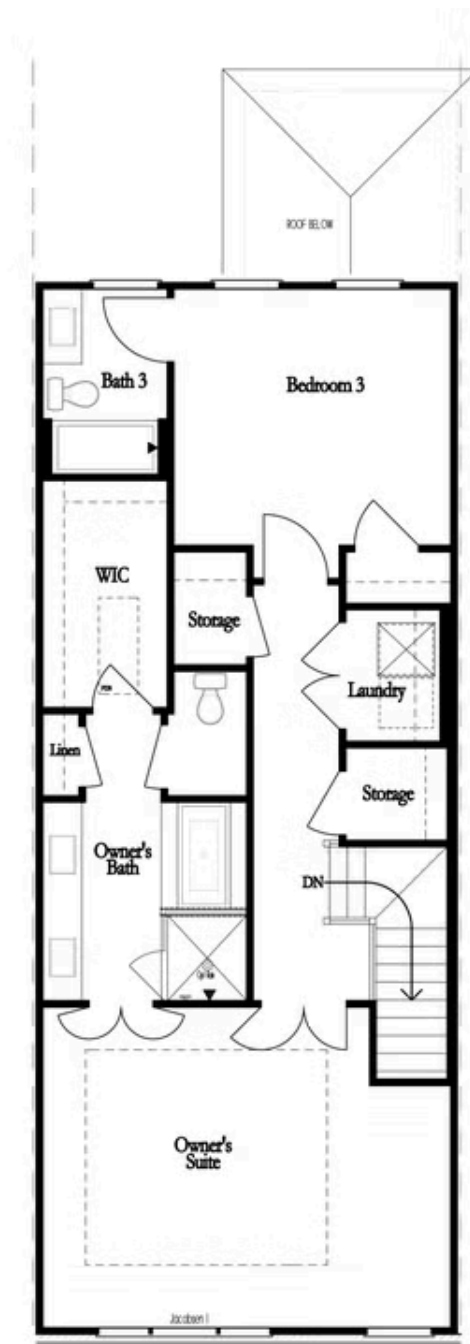
Want to Know More  
About This Home?

CONTACT OUR COMMUNITY SALES MANAGER  
Call Us @ 770.521.2151



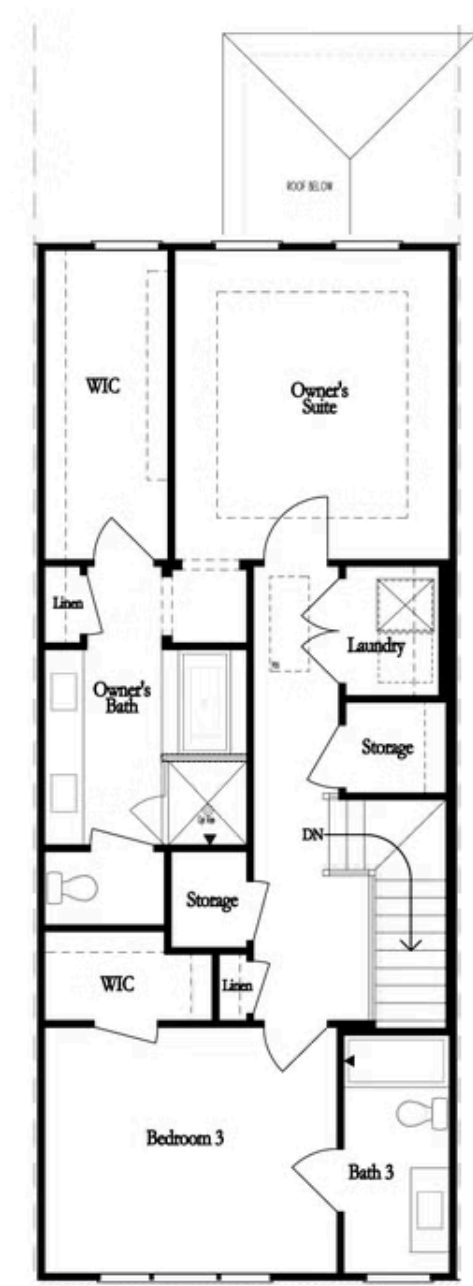
Want to Know More  
About This Home?

CONTACT OUR COMMUNITY SALES MANAGER  
Call Us @ 770.521.2151



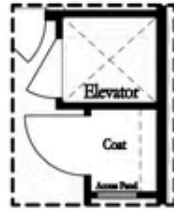
Want to Know More  
About This Home?

CONTACT OUR COMMUNITY SALES MANAGER  
Call Us @ 770.521.2151

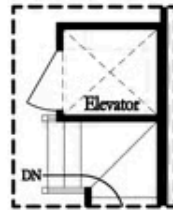


Want to Know More  
About This Home?

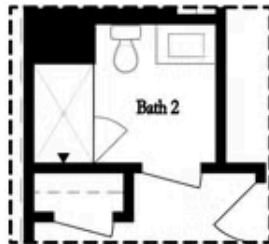
CONTACT OUR COMMUNITY SALES MANAGER  
Call Us @ 770.521.2151



Opt. Elevator  
on Terrace



Opt. Elevator  
on Second Floor



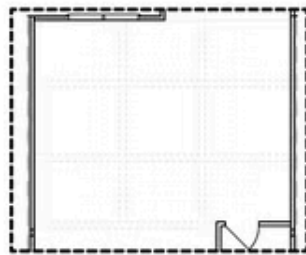
Opt. Shower  
on Terrace Bath



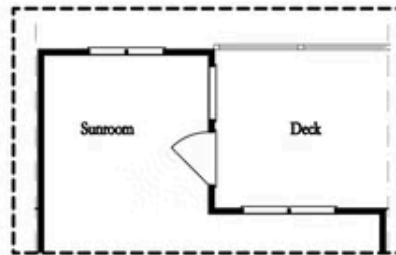
Opt. Linear  
Fireplace



Opt. Fireplace



Opt. Coffered Ceiling

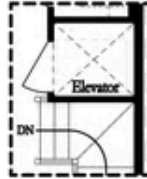


Opt. Sunroom 2

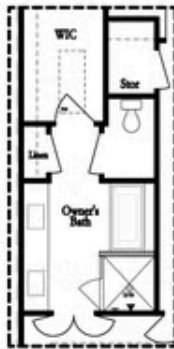
OPTIONS

Want to Know More  
About This Home?

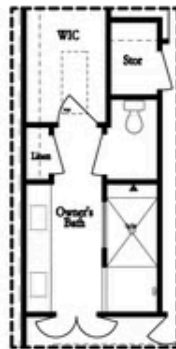
CONTACT OUR COMMUNITY SALES MANAGER  
Call Us @ 770.521.2151



Opt. Elevator  
on Third Floor

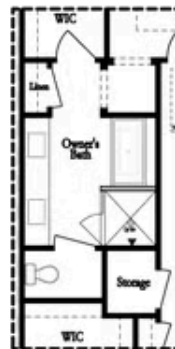


Opt. Free Standing  
Tub w/ Shower

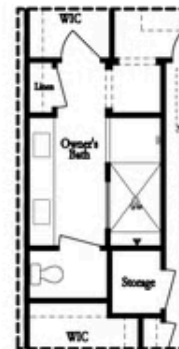


Opt. Walk-Through  
Shower

OWNER'S SUITE FRONT



Opt. Free Standing  
Tub w/ Shower



Opt. Walk-Through  
Shower

OWNER'S SUITE REAR

Want to Know More  
About This Home?

CONTACT OUR COMMUNITY SALES MANAGER  
Call Us @ 770.521.2151