



PRICED AT  
**\$844,630**

 2837 Sq Ft

 4 Beds

 3.5 Baths

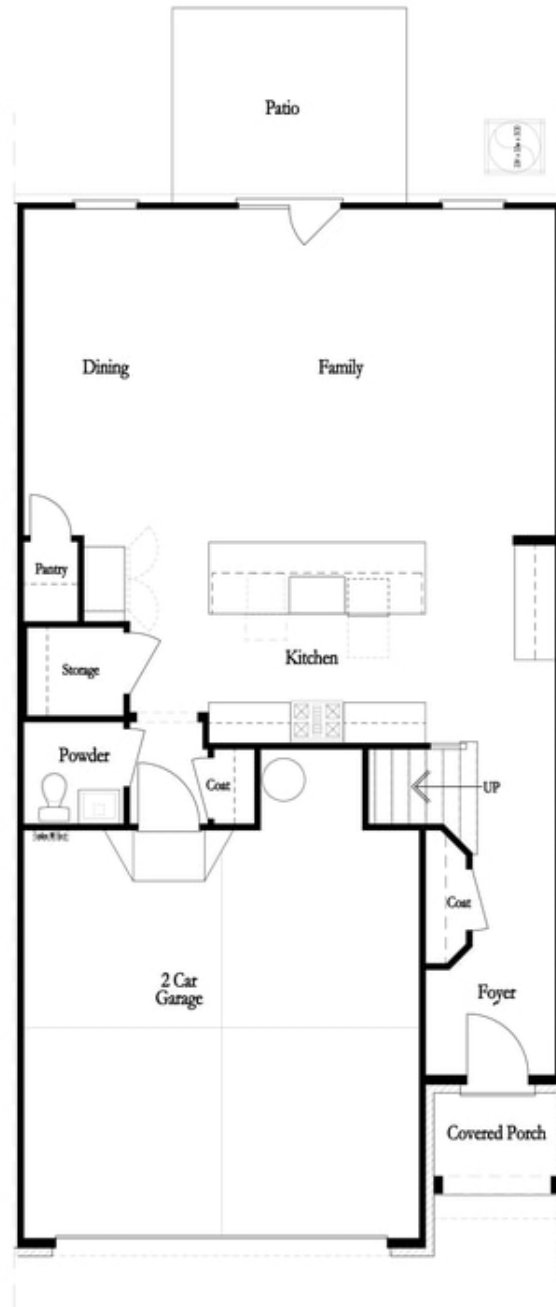
 2 Car Garage

 3.0 Story

Spring into a new home! Ward's Crossing is a brand new gated community, located in the heart of Johns Creek, and built by The Providence Group. This is a rare opportunity for new construction townhomes in Johns Creek. This Ellington END UNIT is currently under construction and will be ready for move in June/July of 2024. Start your year off right with a beautiful new place to live! This floorplan features 4 bedrooms, 3.5 baths, living level on the main, two-car garage, fenced in backyard and over 2800 square feet of space! On the first level you will find the front entry two-car garage and your beautiful, private entry way which leads into an open-design, gourmet kitchen featuring a vast 10' ft. island with plenty of space for entertaining! The kitchen also abounds with cabinet space AND has a pantry for additional storage. Looking out into the family room, from the kitchen island, you can easily converse with those who are near and dear, while they watch TV or enjoy the gas burning fireplace. Just outside the family room, through triple slider doors, you will find a lovely covered porch with a fenced-in backyard on a gorgeous wooded lot, perfect ...

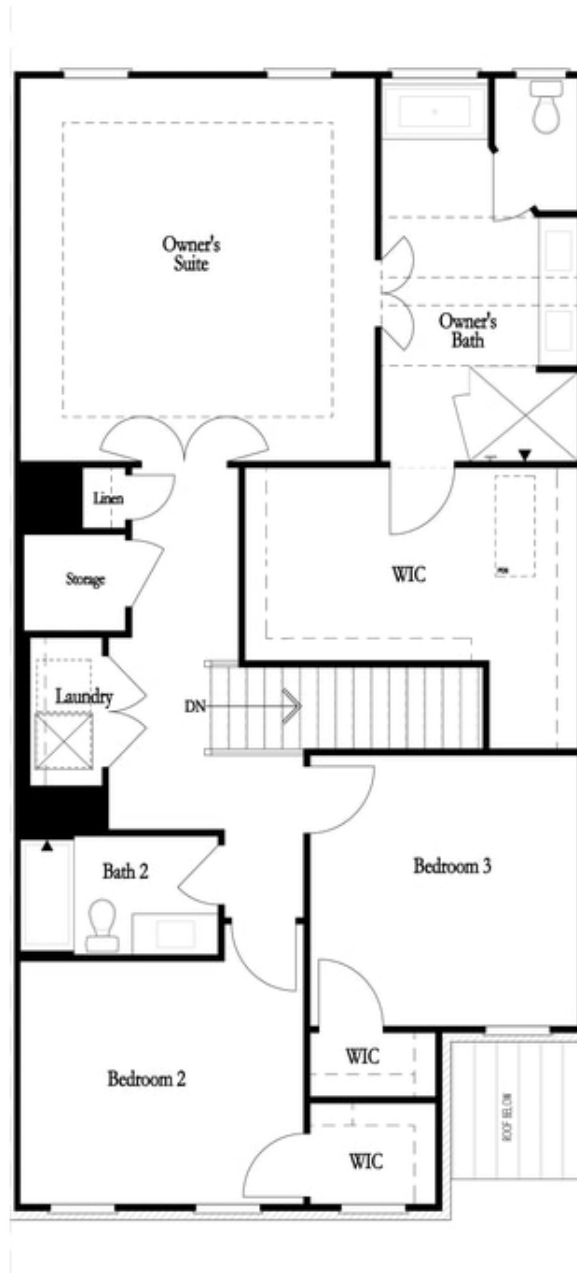
**Want to Know More  
About This Home?**

CONTACT OUR COMMUNITY SALES MANAGER  
Call Us @ 770.521.2151



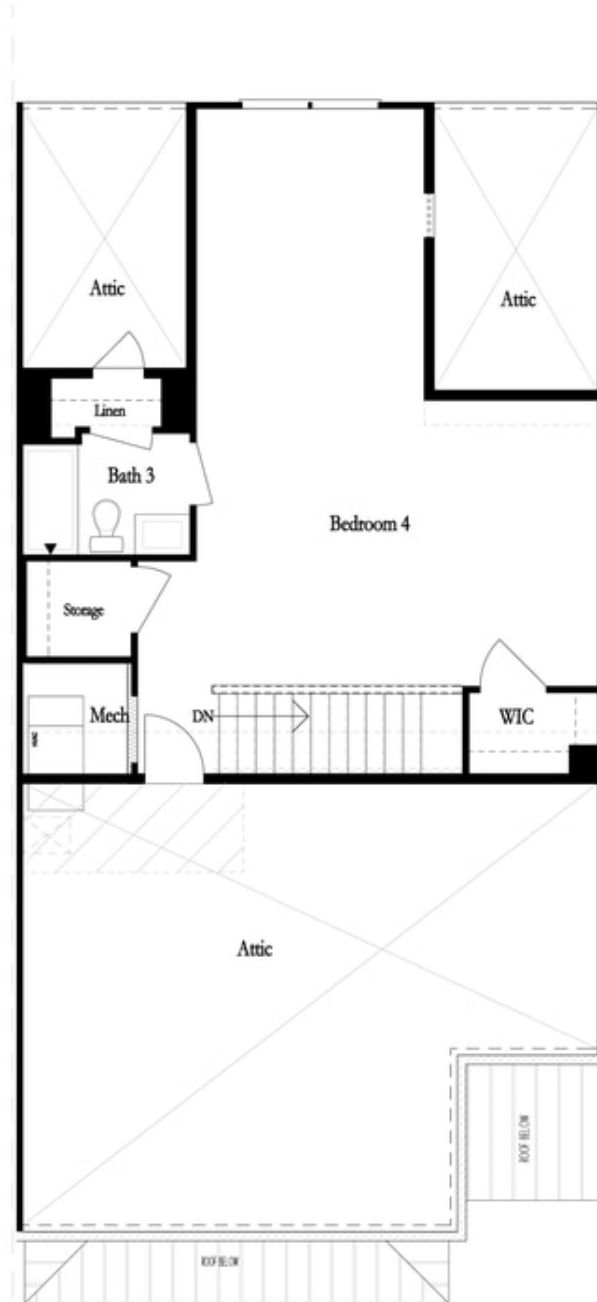
**Want to Know More  
About This Home?**

CONTACT OUR COMMUNITY SALES MANAGER  
Call Us @ 770.521.2151



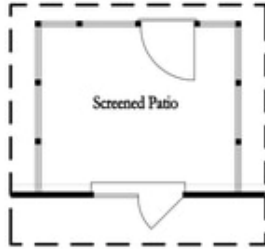
**Want to Know More  
About This Home?**

CONTACT OUR COMMUNITY SALES MANAGER  
Call Us @ 770.521.2151

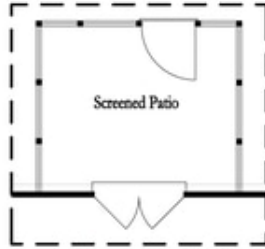


**Want to Know More  
About This Home?**

CONTACT OUR COMMUNITY SALES MANAGER  
Call Us @ 770.521.2151



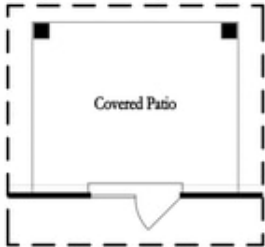
*Opt. Screened Patio  
 w/ Std Garden Door*



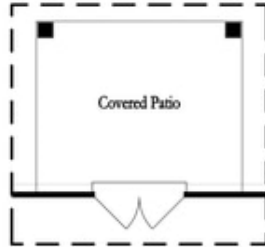
*Opt. Screened Patio  
 w/ French Door*



*Opt. Screened Patio  
 w/ Slider Door*



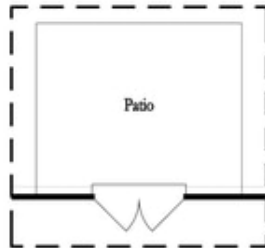
*Opt. Covered Patio  
 w/ Std Garden Door*



*Opt. Covered Patio  
 w/ French Door*



*Opt. Covered Patio  
 w/ Slider Door*



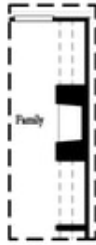
*Opt. French Door*



*Opt. Slider Door*

**Want to Know More  
 About This Home?**

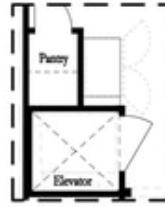
CONTACT OUR COMMUNITY SALES MANAGER  
 Call Us @ 770.521.2151



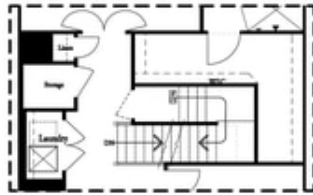
*Opt. Fireplace*



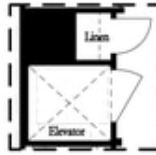
*Opt. Linear Fireplace*



*Opt. Elevator  
 First Floor*



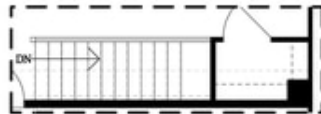
*2nd Floor Stairs to 3rd Floor*



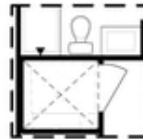
*Opt. Elevator  
 Second Floor*



*Owner's Suite & Bath  
 \*No Trey or Vaulted Ceilings w/ 3rd Floor*



*Opt. Open Rail on 3rd Floor*



*Opt. Elevator  
 Third Floor*

OPTIONS

**Want to Know More  
 About This Home?**

CONTACT OUR COMMUNITY SALES MANAGER  
 Call Us @ 770.521.2151