



PRICED AT
\$807,570

 2837 Sq Ft

 4 Beds

 3.5 Baths

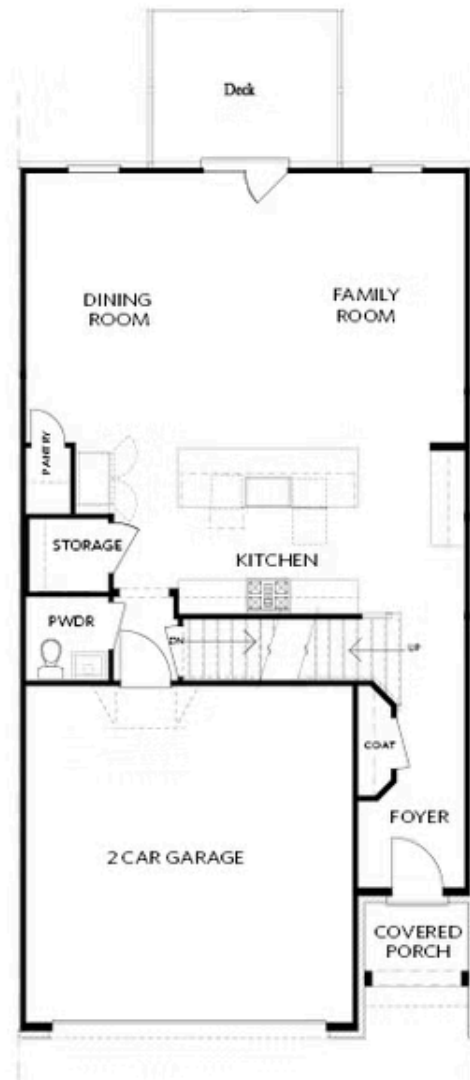
 2 Car Garage

 3.0 Story

The Ellington is currently under construction and will be ready for move in June/July of 2024. Located in the heart of Johns Creek at Ward's Crossing, a Providence Group community! This floorplan features 3 story living with 4 bedrooms, 3.5 baths and over 2800 square feet of functional living space. With the living level located on the main, this home truly lives like a single-family home. The beautifully designed entertainer's kitchen opens up to the family room, allowing for the perfect space to host loved ones or have a quiet night at home, lying next to your gas fireplace, which is detailed beautifully with a white quartzite surround. The kitchen features Bell cabinetry, GE Profile appliances, Cambria quartz countertops, a farmhouse sink, and an enormous island that truly is perfect for entertaining! Hardwoods throughout all main living areas and the primary bedroom. This home is Energy Star certified and built with the finest finishing touches, including a Rheem gas tankless water heater, Thermacrete and Energy Star certified windows. Located right next to Johns Creek High School and, State Bridge Crossing Elementary is just across the street! The location can't be beat! Give us a call today to schedule your appointment! ...

**Want to Know More
About This Home?**

CONTACT OUR COMMUNITY SALES MANAGER
Call Us @ 770.521.2151

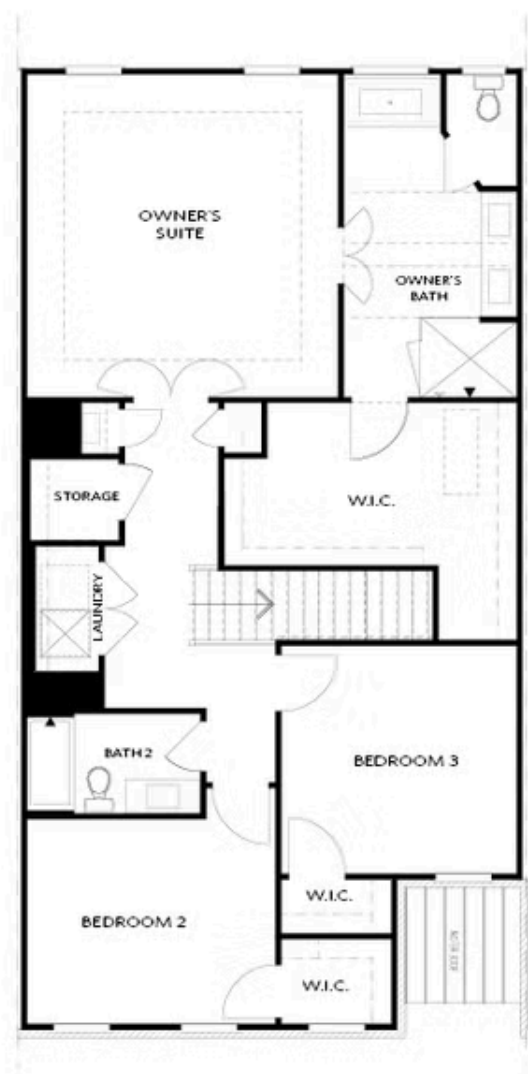


FIRST FLOOR

Elevation C, I, K

Want to Know More
About This Home?

CONTACT OUR COMMUNITY SALES MANAGER
Call Us @ 770.521.2151

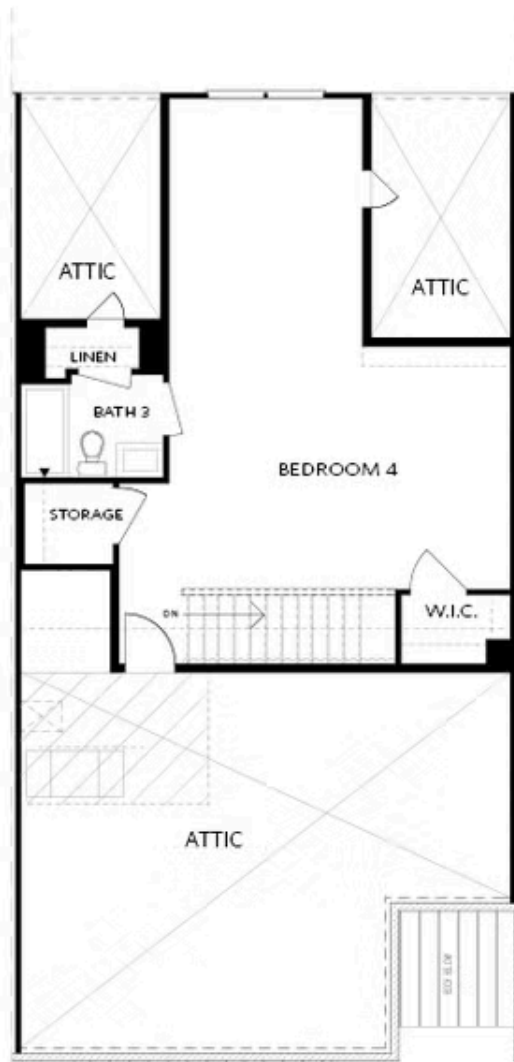


SECOND FLOOR

Elevation C, I, K

Want to Know More
About This Home?

CONTACT OUR COMMUNITY SALES MANAGER
Call Us @ 770.521.2151

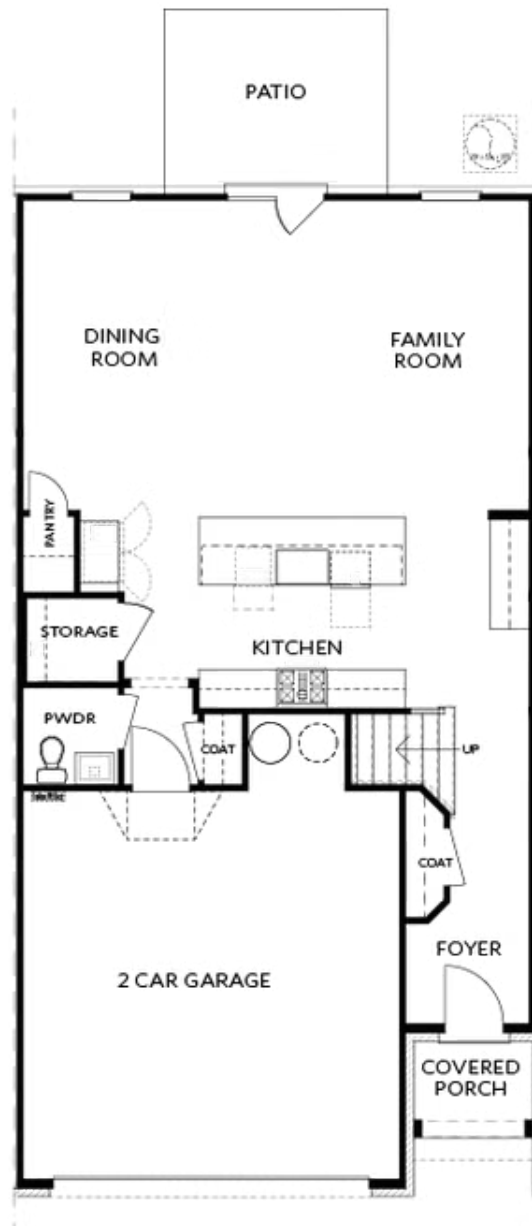


THIRD FLOOR

Elevation C, I, K

Want to Know More
About This Home?

CONTACT OUR COMMUNITY SALES MANAGER
Call Us @ 770.521.2151



Elevations C, I, K

Want to Know More
About This Home?

CONTACT OUR COMMUNITY SALES MANAGER
Call Us @ 770.521.2151

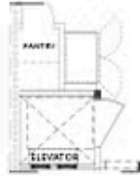


BASEMENT

Elevation C, I, K

Want to Know More
About This Home?

CONTACT OUR COMMUNITY SALES MANAGER
Call Us @ 770.521.2151



Opt. Elevator
First Floor



Opt. Fireplace



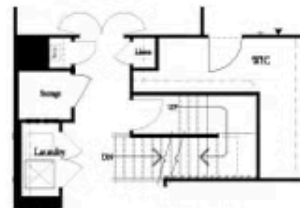
Opt. Linear Fireplace



Owner's Suite & Bath
*No Trey or Vaulted Ceilings w/ 3rd Floor



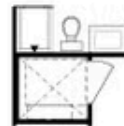
Opt. Elevator
Second Floor



2nd Floor Stairs to 3rd Floor



Opt. Open Rail on 3rd Floor



Opt. Elevator
Third Floor

OPTIONS ON A SLAB WITH 3RD FLOOR

Want to Know More
About This Home?

CONTACT OUR COMMUNITY SALES MANAGER
Call Us @ 770.521.2151