



PRICED AT
\$807,570

 2837 Sq Ft

 4 Beds

 3.5 Baths

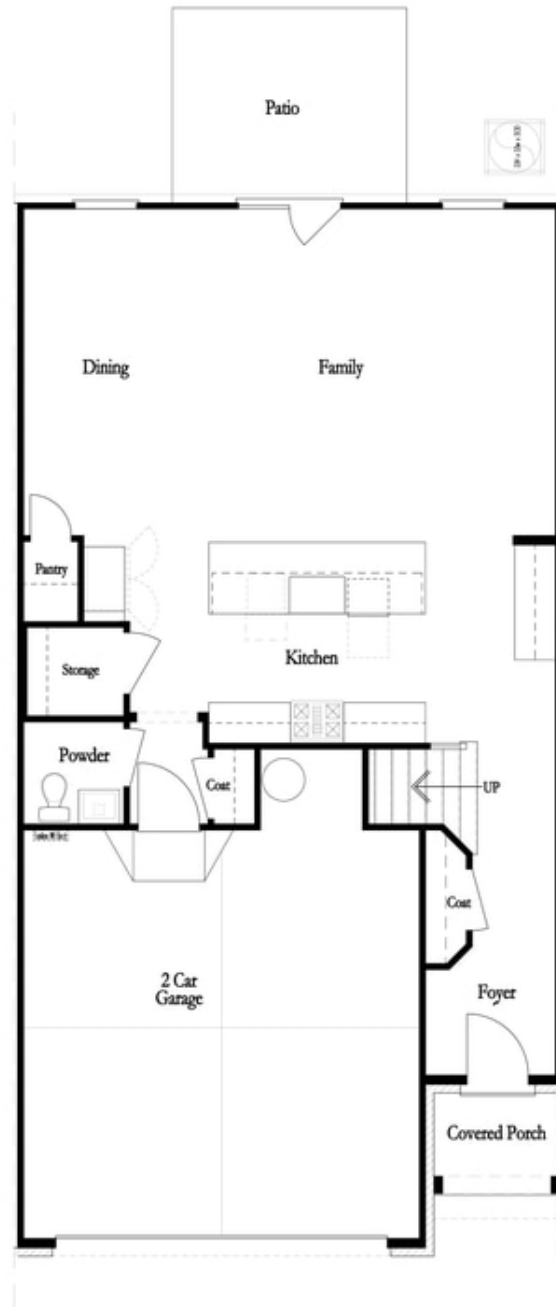
 2 Car Garage

 3.0 Story

The Ellington is currently under construction and will be ready for move in June/July of 2024. Located in the heart of Johns Creek at Ward's Crossing, a Providence Group community! This floorplan features 3 story living with 4 bedrooms, 3.5 baths and over 2800 square feet of functional living space. With the living level located on the main, this home truly lives like a single-family home. The beautifully designed entertainer's kitchen opens up to the family room, allowing for the perfect space to host loved ones or have a quiet night at home, lying next to your gas fireplace, which is detailed beautifully with a white quartzite surround. The kitchen features Bell cabinetry, GE Profile appliances, Cambria quartz countertops, a farmhouse sink, and an enormous island that truly is perfect for entertaining! Hardwoods throughout all main living areas and the primary bedroom. This home is Energy Star certified and built with the finest finishing touches, including a Rheem gas tankless water heater, Thermacrete and Energy Star certified windows. Located right next to Johns Creek High School and, State Bridge Crossing Elementary is just across the street! The location can't be beat! Give us a call today to schedule your appointment! ...

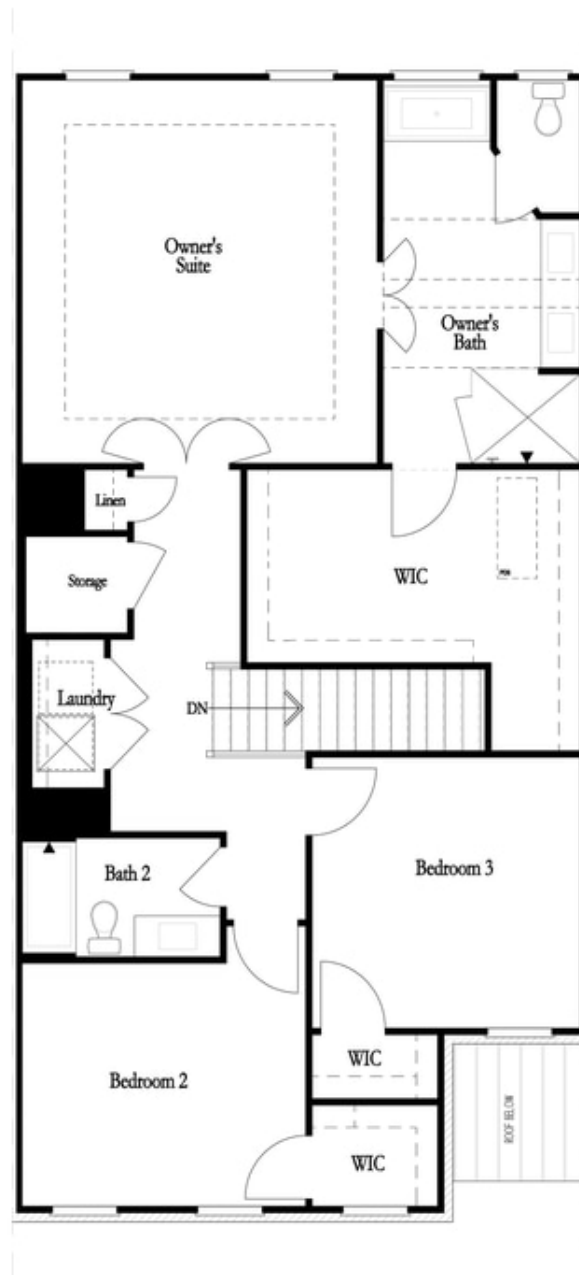
**Want to Know More
About This Home?**

CONTACT OUR COMMUNITY SALES MANAGER
Call Us @ 770.521.2151



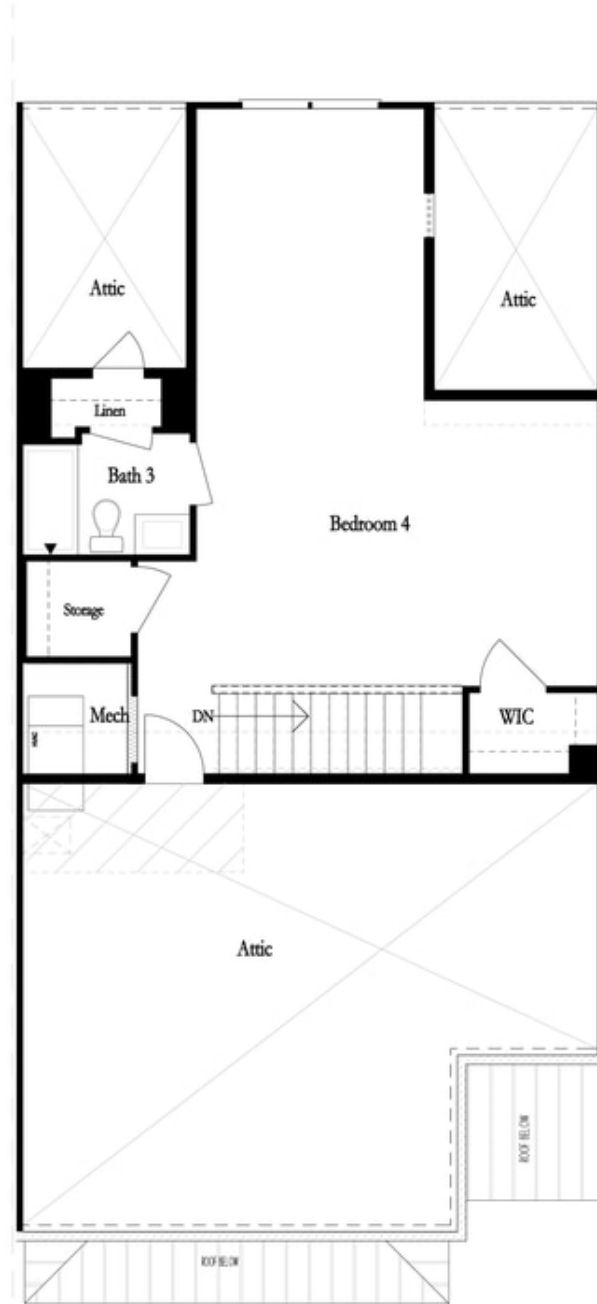
**Want to Know More
About This Home?**

CONTACT OUR COMMUNITY SALES MANAGER
Call Us @ 770.521.2151



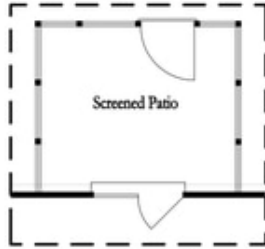
**Want to Know More
About This Home?**

CONTACT OUR COMMUNITY SALES MANAGER
Call Us @ 770.521.2151

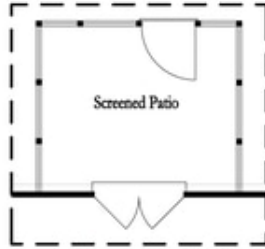


**Want to Know More
About This Home?**

CONTACT OUR COMMUNITY SALES MANAGER
Call Us @ 770.521.2151



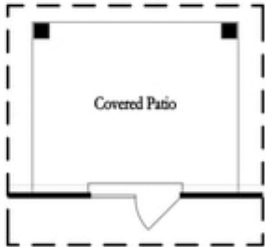
*Opt. Screened Patio
w/ Std Garden Door*



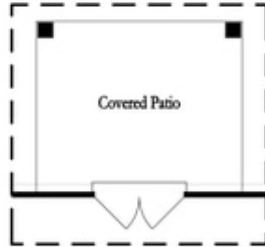
*Opt. Screened Patio
w/ French Door*



*Opt. Screened Patio
w/ Slider Door*



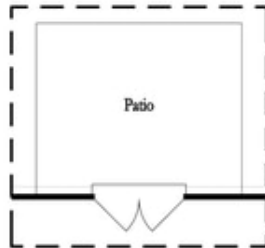
*Opt. Covered Patio
w/ Std Garden Door*



*Opt. Covered Patio
w/ French Door*



*Opt. Covered Patio
w/ Slider Door*



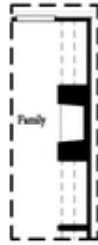
Opt. French Door



Opt. Slider Door

**Want to Know More
About This Home?**

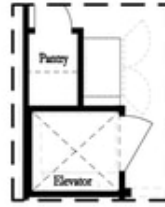
CONTACT OUR COMMUNITY SALES MANAGER
Call Us @ 770.521.2151



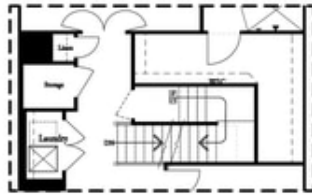
Opt. Fireplace



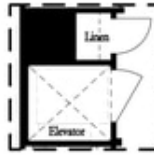
Opt. Linear Fireplace



*Opt. Elevator
 First Floor*



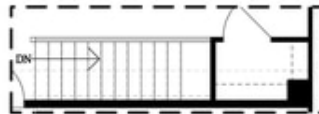
2nd Floor Stairs to 3rd Floor



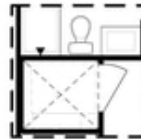
*Opt. Elevator
 Second Floor*



*Owner's Suite & Bath
 No Trey or Vaulted Ceilings w/ 3rd Floor



Opt. Open Rail on 3rd Floor



*Opt. Elevator
 Third Floor*

OPTIONS

**Want to Know More
 About This Home?**

CONTACT OUR COMMUNITY SALES MANAGER
 Call Us @ 770.521.2151