



PRICED AT  
**\$797,075**

 2837 Sq Ft

 4 Beds

 3.5 Baths

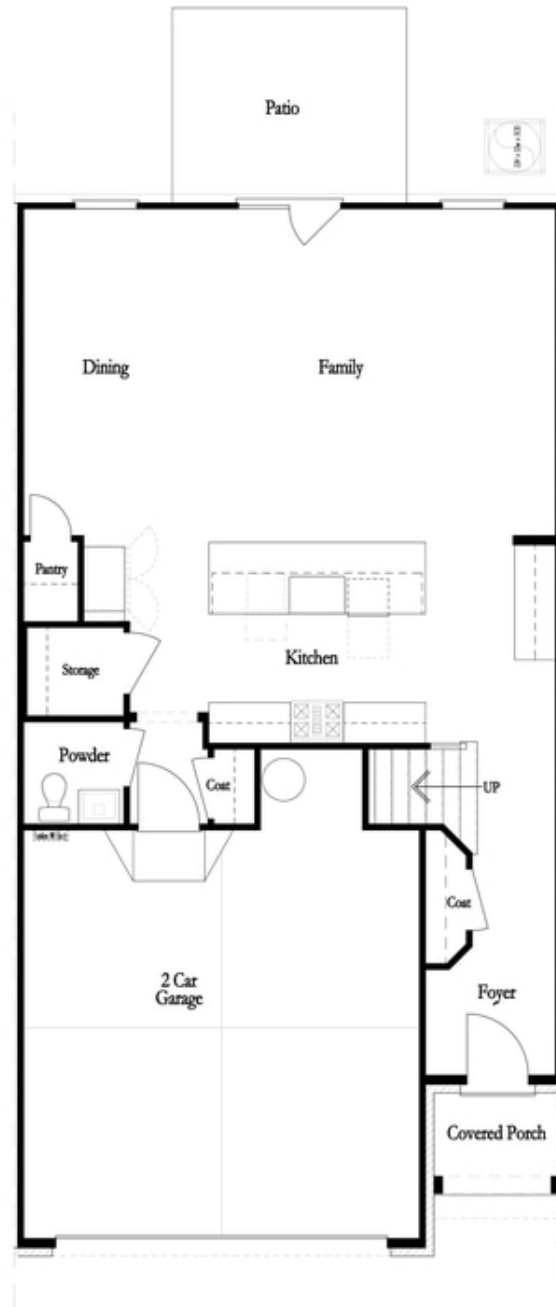
 2 Car Garage

 3.0 Story

**GRAND OPENING @ the highly anticipated Ward's Crossing! A brand new gated community, located in the heart of Johns Creek, and built by The Providence Group. This is a rare opportunity for new construction townhomes in Johns Creek. The Ellington is currently under construction and will be ready for move in January/February of 2024. This floorplan features 3 story living with an option to add an elevator (pending the stage of construction). 4 bedrooms, 3.5 baths, living level on the main, two-car garage, covered porch, fenced in backyard and over 2800 square feet of space! This spacious and well-appointed townhome truly lives like a single family home and is built with the highest quality and environmentally friendly products, Energy Star rated and includes Thermacrete, a truly superior party wall material. Located in the heart of Johns Creek, right next to Johns Creek High School! And, State Bridge Crossing Elementary is just across the street! Give us a call today to schedule your appointment! \*\*\*Please note the photos shown are not of the exact property but are similar, as the home is currently under construction and will be completed January/February 2024. Please call for additional details.\*\*\*Closing cost incentive available with one ...**

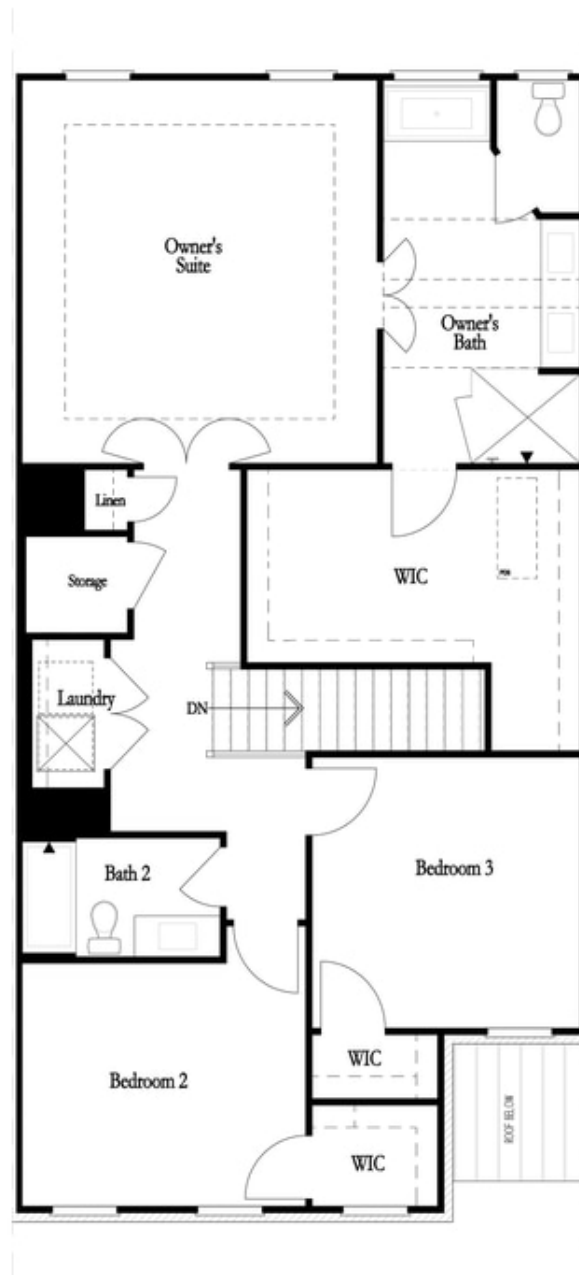
**Want to Know More  
About This Home?**

CONTACT OUR COMMUNITY SALES MANAGER  
Call Us @ 770.521.2151



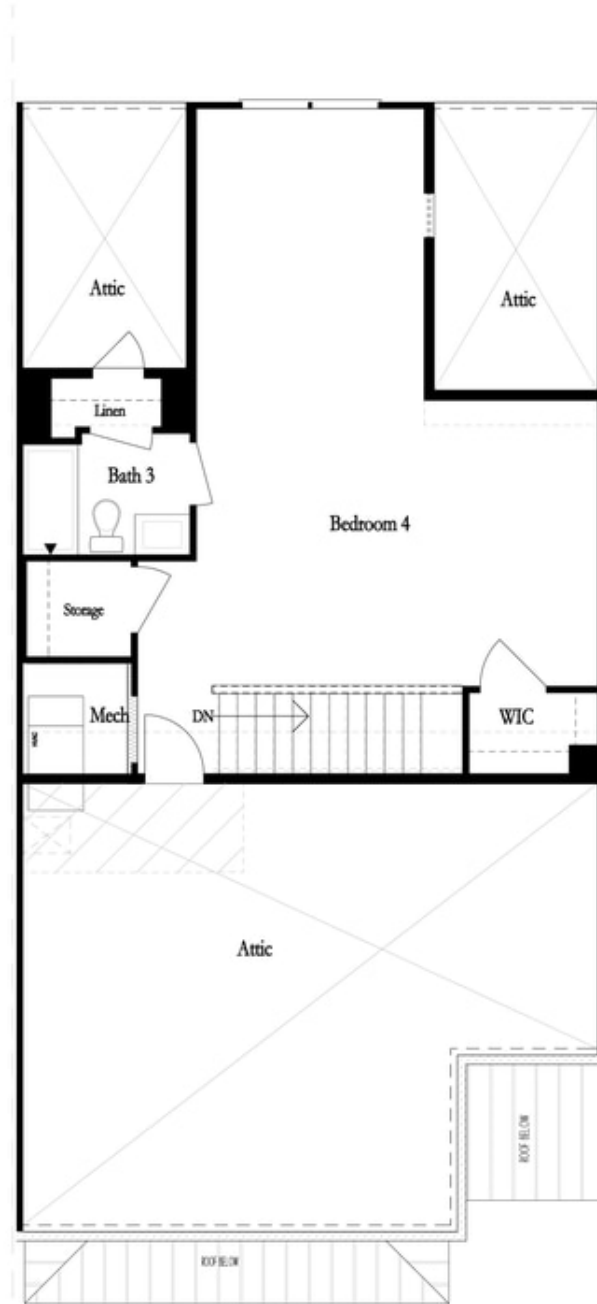
**Want to Know More  
About This Home?**

CONTACT OUR COMMUNITY SALES MANAGER  
Call Us @ 770.521.2151



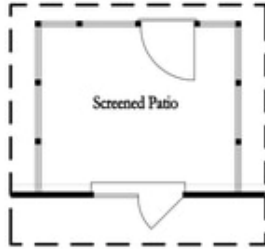
**Want to Know More  
About This Home?**

CONTACT OUR COMMUNITY SALES MANAGER  
Call Us @ 770.521.2151

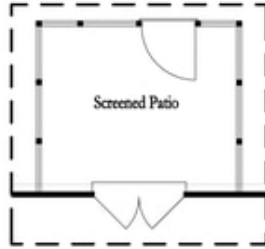


**Want to Know More  
About This Home?**

CONTACT OUR COMMUNITY SALES MANAGER  
Call Us @ 770.521.2151



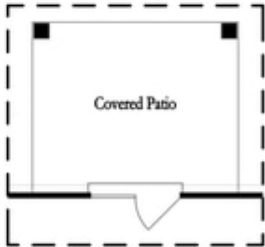
*Opt. Screened Patio  
w/ Std Garden Door*



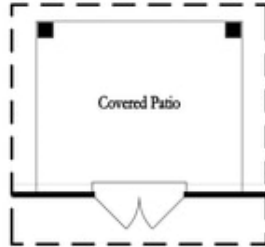
*Opt. Screened Patio  
w/ French Door*



*Opt. Screened Patio  
w/ Slider Door*



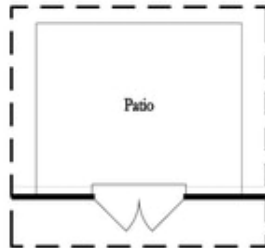
*Opt. Covered Patio  
w/ Std Garden Door*



*Opt. Covered Patio  
w/ French Door*



*Opt. Covered Patio  
w/ Slider Door*



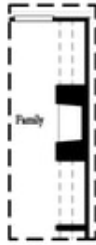
*Opt. French Door*



*Opt. Slider Door*

**Want to Know More  
About This Home?**

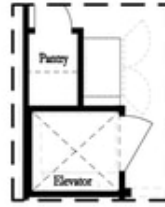
CONTACT OUR COMMUNITY SALES MANAGER  
Call Us @ 770.521.2151



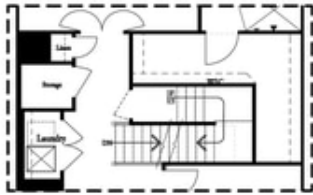
*Opt. Fireplace*



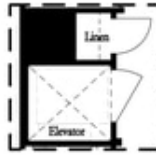
*Opt. Linear Fireplace*



*Opt. Elevator  
 First Floor*



*2nd Floor Stairs to 3rd Floor*



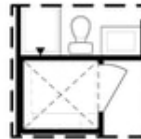
*Opt. Elevator  
 Second Floor*



*Owner's Suite & Bath  
 \*No Trey or Vaulted Ceilings w/ 3rd Floor*



*Opt. Open Rail on 3rd Floor*



*Opt. Elevator  
 Third Floor*

OPTIONS

**Want to Know More  
 About This Home?**

CONTACT OUR COMMUNITY SALES MANAGER  
 Call Us @ 770.521.2151