



PRICED AT
\$789,675

 2837 Sq Ft

 4 Beds

 3.5 Baths

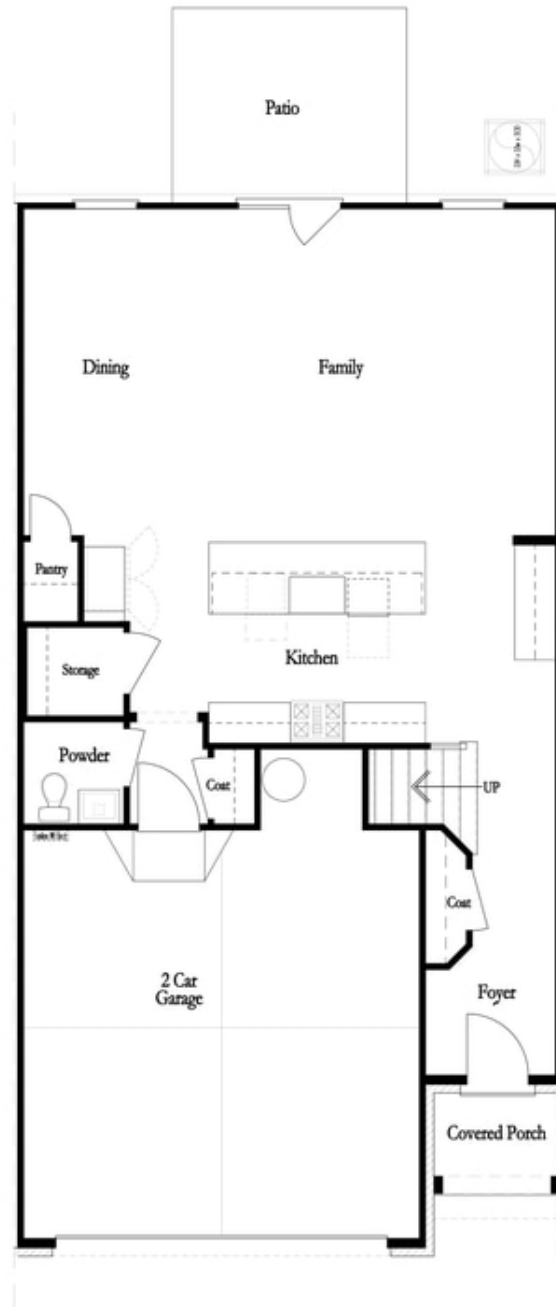
 2 Car Garage

 3.0 Story

Spring into a new home! Ward's Crossing, is a brand new gated community, located in the heart of Johns Creek, and built by The Providence Group. This is a rare opportunity for new construction townhomes in Johns Creek. The Ellington is currently under construction and will be ready for move in January/February of 2024. This floorplan features 3 story living with an option to add an elevator (pending the stage of construction). 4 bedrooms, 3.5 baths, living level on the main, two-car garage, fenced in backyard and over 2800 square feet of space! This spacious and well-appointed townhome truly lives like a single family home and is built with the highest quality and environmentally friendly products, including Thermacrete, a truly superior party wall material. Located in the heart of Johns Creek, right next to Johns Creek High School! And, State Bridge Crossing Elementary is just across the street! The location can't be beat! Give us a call today to schedule your appointment! ***Please note the photos shown are not of the exact property but are similar, as the home is currently under construction and will be completed February 2024. ***Closing cost incentive available with one of our preferred lenders.

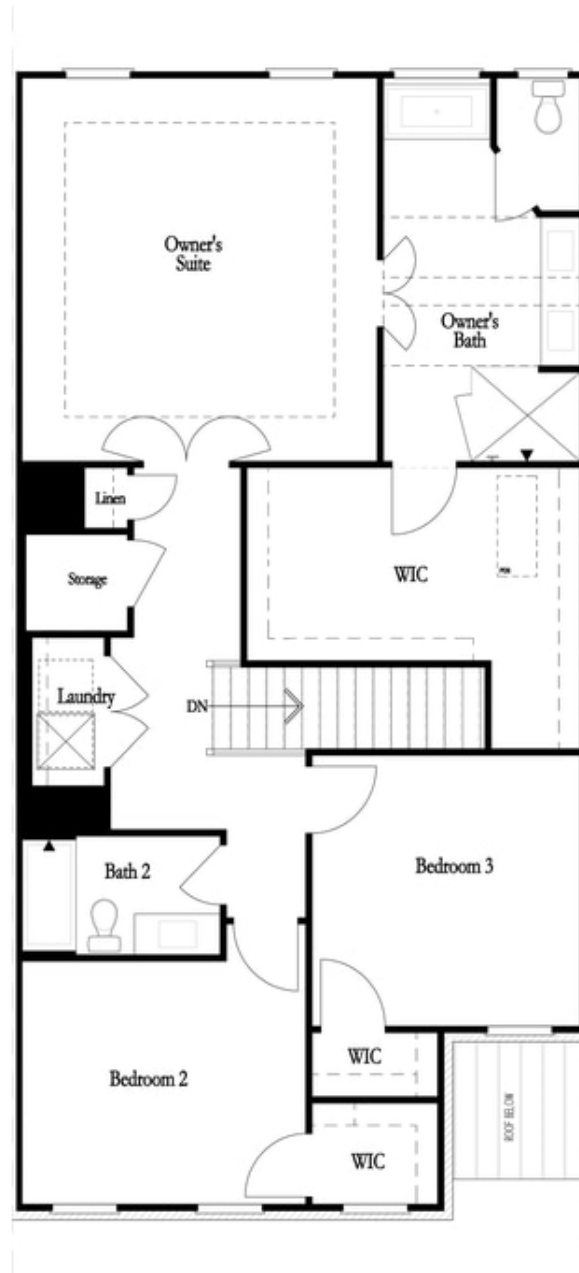
**Want to Know More
About This Home?**

CONTACT OUR COMMUNITY SALES MANAGER
Call Us @ 770.521.2151



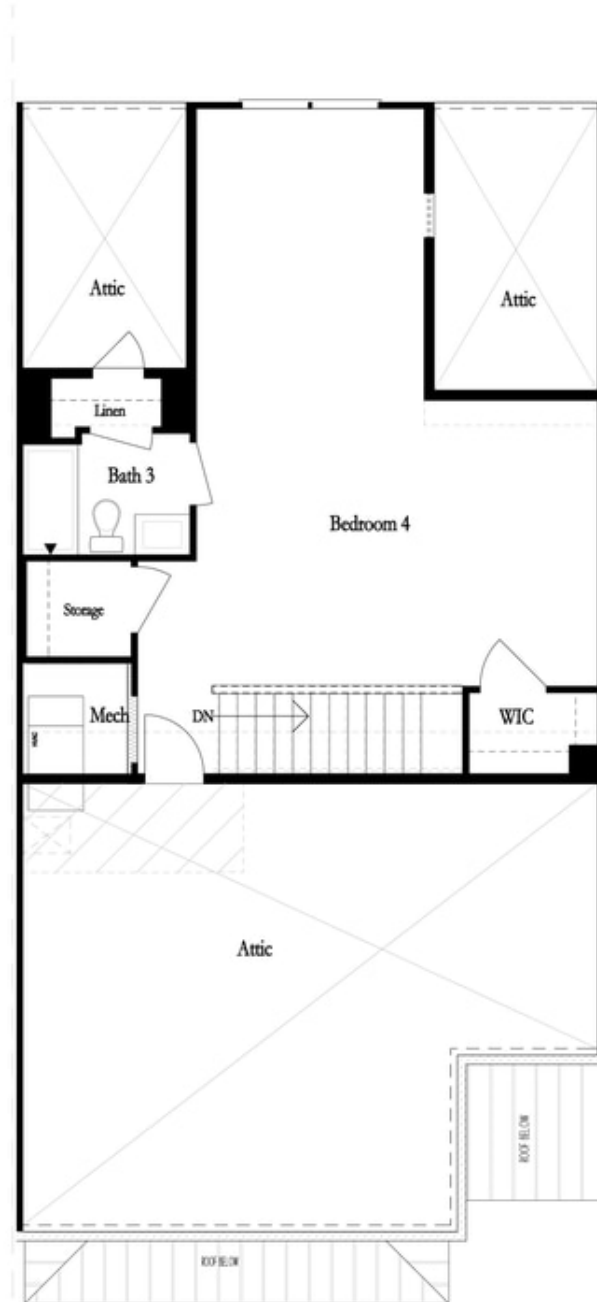
**Want to Know More
About This Home?**

CONTACT OUR COMMUNITY SALES MANAGER
Call Us @ 770.521.2151



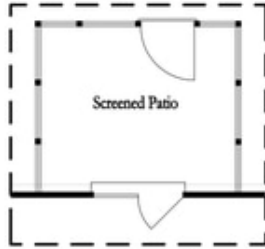
**Want to Know More
About This Home?**

CONTACT OUR COMMUNITY SALES MANAGER
Call Us @ 770.521.2151

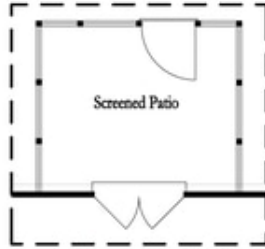


**Want to Know More
About This Home?**

CONTACT OUR COMMUNITY SALES MANAGER
Call Us @ 770.521.2151



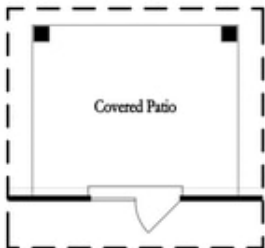
*Opt. Screened Patio
w/ Std Garden Door*



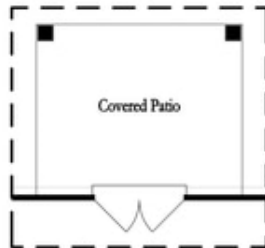
*Opt. Screened Patio
w/ French Door*



*Opt. Screened Patio
w/ Slider Door*



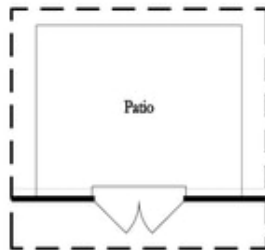
*Opt. Covered Patio
w/ Std Garden Door*



*Opt. Covered Patio
w/ French Door*



*Opt. Covered Patio
w/ Slider Door*



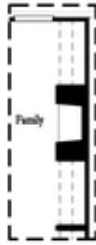
Opt. French Door



Opt. Slider Door

**Want to Know More
About This Home?**

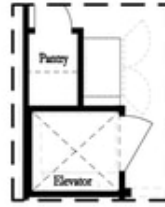
CONTACT OUR COMMUNITY SALES MANAGER
Call Us @ 770.521.2151



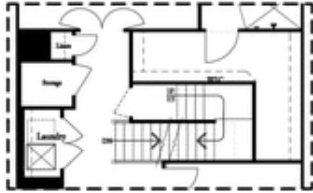
Opt. Fireplace



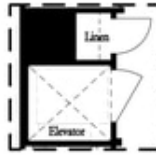
Opt. Linear Fireplace



*Opt. Elevator
 First Floor*



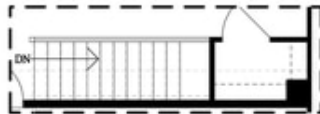
2nd Floor Stairs to 3rd Floor



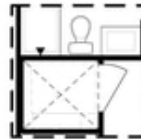
*Opt. Elevator
 Second Floor*



*Owner's Suite & Bath
 No Trey or Vaulted Ceilings w/ 3rd Floor



Opt. Open Rail on 3rd Floor



*Opt. Elevator
 Third Floor*

OPTIONS

**Want to Know More
 About This Home?**

CONTACT OUR COMMUNITY SALES MANAGER
 Call Us @ 770.521.2151