



PRICED AT
\$816,545

 **2837 Sq Ft**

 **4 Beds**

 **3.5 Baths**

 **2 Car Garage**

 **3.0 Story**

Spring into a new home! Ward's Crossing is a brand new gated community, located in the heart of Johns Creek, and built by The Providence Group. This is a rare opportunity for new construction townhomes in Johns Creek. This Ellington END UNIT is currently under construction and will be ready for move in January/February of 2024. Start your year off right with a beautiful new place to live! This floorplan features 4 bedrooms, 3.5 baths, living level on the main, two-car garage, fenced in backyard and over 2800 square feet of space! On the first level you will find the front entry two-car garage and your beautiful, private entry way which leads into an open-design, gourmet kitchen featuring a vast 10' ft. island with plenty of space for entertaining! The kitchen also abounds with cabinet space AND has a pantry for additional storage. Looking out into the family room, from the kitchen island, you can easily converse with those who are near and dear, while they watch TV or enjoy the gas burning fireplace. Just outside the family room you will find a lovely concrete patio with a black aluminum fenced-in backyard, perfect for a furry friend or just to ...

**Want to Know More
About This Home?**

CONTACT OUR COMMUNITY SALES MANAGER
Call Us @ 770.521.2151

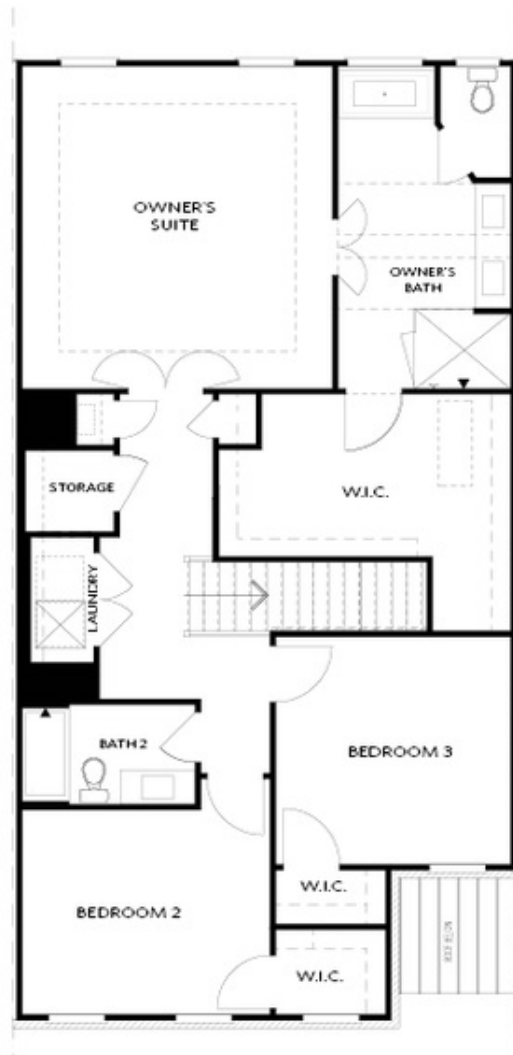


FIRST FLOOR

Elevation C, I, K

Want to Know More
About This Home?

CONTACT OUR COMMUNITY SALES MANAGER
Call Us @ 770.521.2151

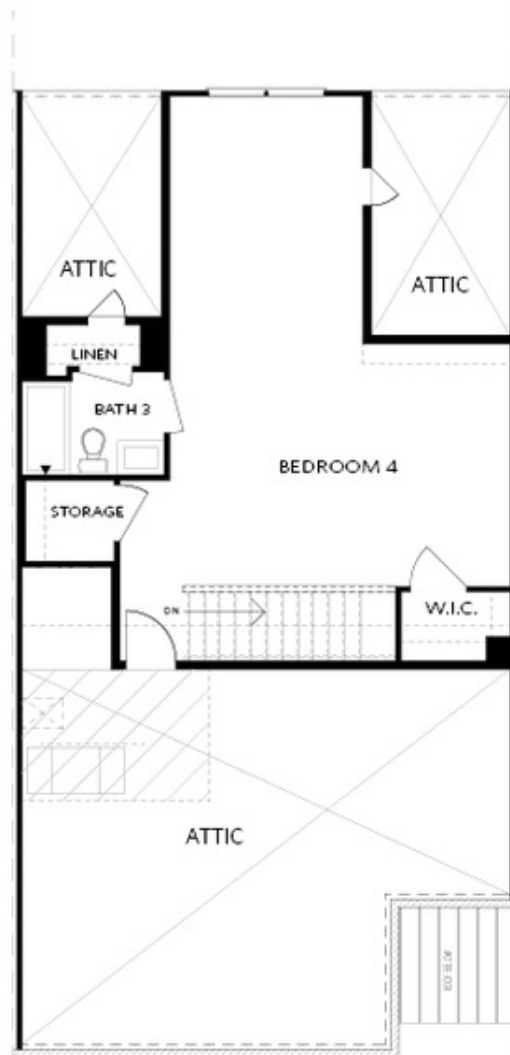


SECOND FLOOR

Elevation C, I, K

Want to Know More
About This Home?

CONTACT OUR COMMUNITY SALES MANAGER
Call Us @ 770.521.2151

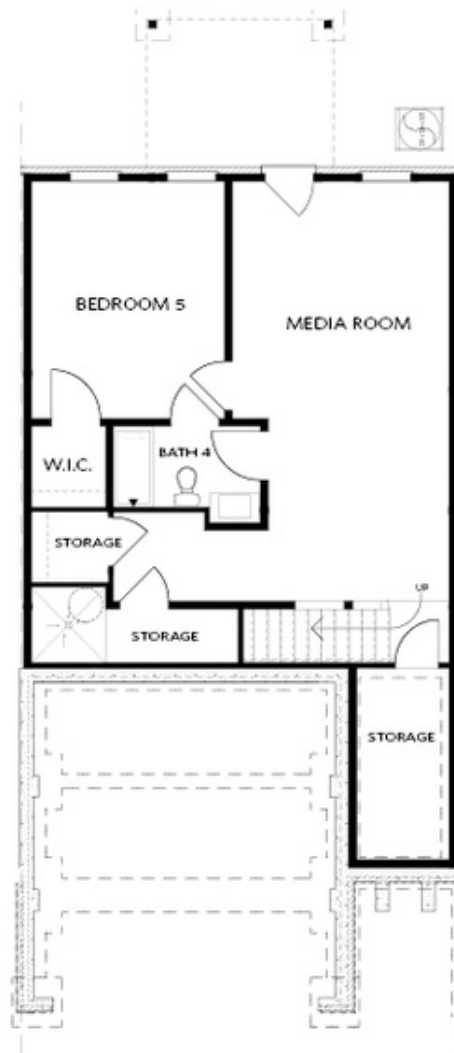


THIRD FLOOR

Elevation C, I, K

Want to Know More
About This Home?

CONTACT OUR COMMUNITY SALES MANAGER
Call Us @ 770.521.2151

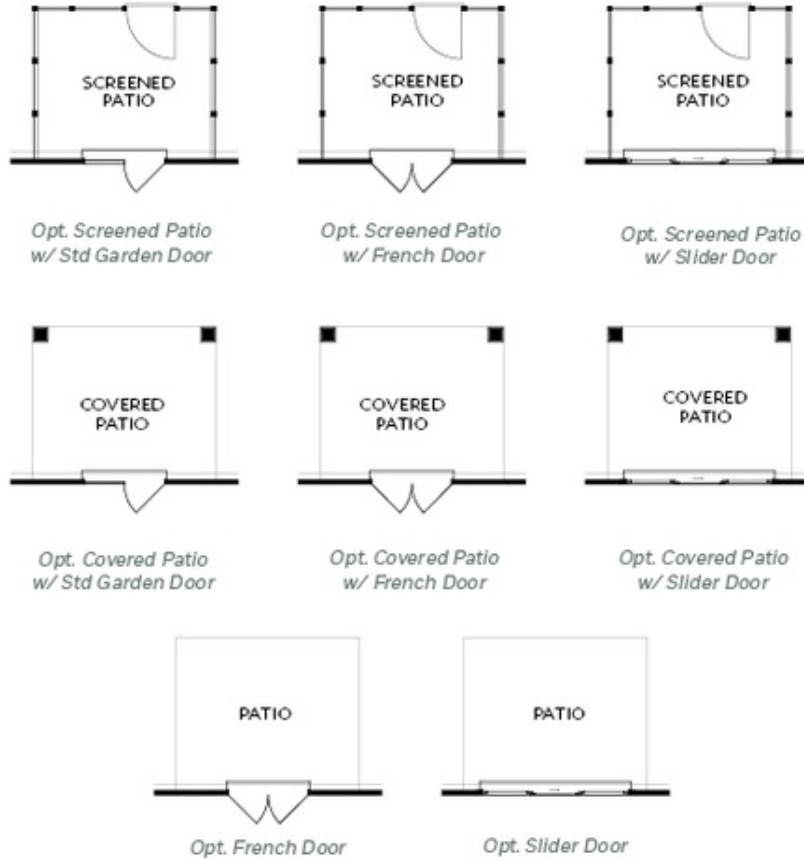


BASEMENT

Elevation C, I, K

**Want to Know More
About This Home?**

CONTACT OUR COMMUNITY SALES MANAGER
Call Us @ 770.521.2151



FIRST FLOOR
 PATIO OPTIONS
 ON A SLAB

Want to Know More
 About This Home?

CONTACT OUR COMMUNITY SALES MANAGER
 Call Us @ 770.521.2151



*Opt. Screened Deck
w/ Std Garden Door*



*Opt. Screened Deck
w/ French Door*



*Opt. Screened Deck
w/ Slider Door*



*Opt. Covered Deck
w/ Std Garden Door*



*Opt. Covered Patio
w/ French Door*



*Opt. Covered Deck
w/ Slider Door*



Opt. French Door

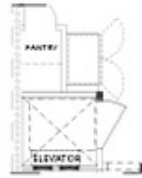


Opt. Slider Door

FIRST FLOOR
DECK OPTIONS
ON A BASEMENT

Want to Know More
About This Home?

CONTACT OUR COMMUNITY SALES MANAGER
Call Us @ 770.521.2151



*Opt. Elevator
 First Floor*



Opt. Fireplace



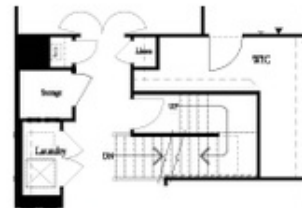
Opt. Linear Fireplace



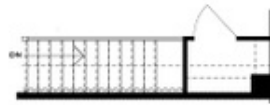
*Owner's Suite & Bath
 No Trey or Vaulted Ceilings w/ 3rd Floor



*Opt. Elevator
 Second Floor*



2nd Floor Stairs to 3rd Floor



Opt. Open Rail on 3rd Floor



*Opt. Elevator
 Third Floor*

**OPTIONS
 ON A SLAB
 WITH 3RD FLOOR**

**Want to Know More
 About This Home?**

CONTACT OUR COMMUNITY SALES MANAGER
Call Us @ 770.521.2151



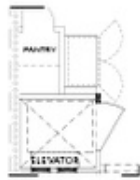
Opt. Shower



Opt. Wet Bar



*Opt. Elevator
 Basement*



*Opt. Elevator
 First Floor*



Opt. Fireplace



Opt. Linear Fireplace



*Opt. Elevator
 Second Floor*

**OPTIONS
 ON A BASEMENT**

**Want to Know More
 About This Home?**

CONTACT OUR COMMUNITY SALES MANAGER
Call Us @ 770.521.2151