



PRICED AT  
**\$833,295**

 2837 Sq Ft

 4 Beds

 3.5 Baths

 2 Car Garage

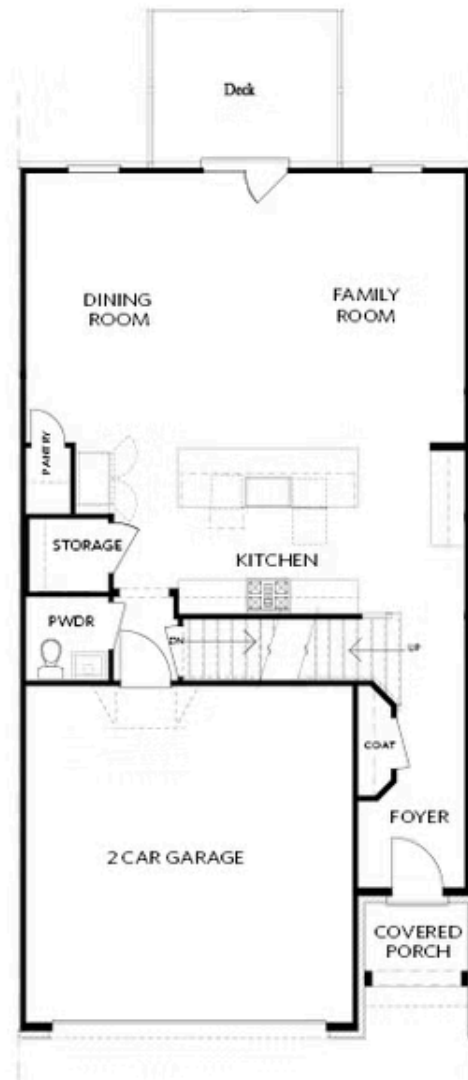
 3.0 Story

New Year, New Home, New You! Ward's Crossing, a brand new gated community built by The Providence Group, offers a rare opportunity for new construction townhomes in Johns Creek! The Ellington END UNIT is currently under construction and will be ready for move in MAR/APRIL of 2024. This beautiful and functional floorplan features 4 bedrooms, 3.5 baths, living level on the main, two-car garage, fenced in backyard and over 2800 square feet of space! On the first level you will find the front entry two-car garage and your beautiful, private entry way which leads into an open-design, gourmet kitchen featuring a vast 10' ft. island with plenty of space for entertaining! The kitchen also abounds with cabinet space AND has a pantry for additional storage. Looking out into the family room, from the kitchen island, you can easily converse with those who are near and dear, while they watch TV or enjoy the gas burning fireplace. Just outside the family room you will find a lovely concrete patio with a black aluminum fenced-in backyard, perfect for a furry friend or just to sit and enjoy the cooler months. The first floor also includes a powder room, two coat closets and ...

Want to Know More  
About This Home?

CONTACT OUR COMMUNITY SALES MANAGER  
Call Us @ 770.521.2151



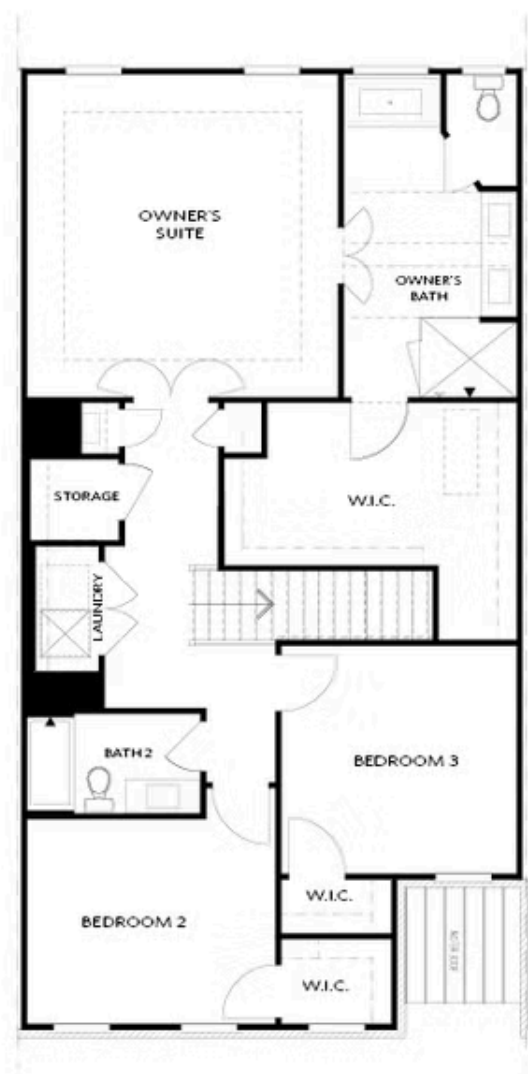


FIRST FLOOR

Elevation C, I, K

Want to Know More  
About This Home?

CONTACT OUR COMMUNITY SALES MANAGER  
Call Us @ 770.521.2151

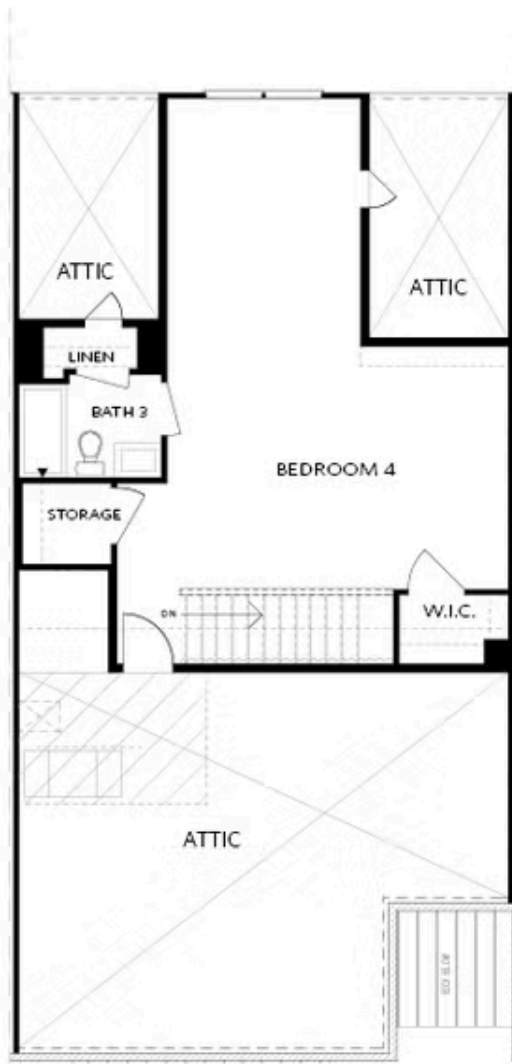


SECOND FLOOR

Elevation C, I, K

Want to Know More  
About This Home?

CONTACT OUR COMMUNITY SALES MANAGER  
Call Us @ 770.521.2151

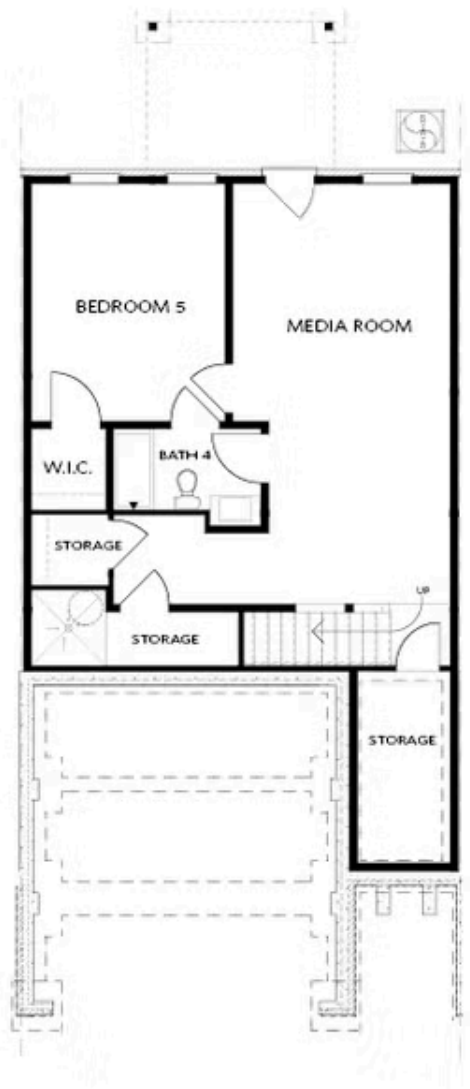


THIRD FLOOR

Elevation C, I, K

Want to Know More  
About This Home?

CONTACT OUR COMMUNITY SALES MANAGER  
Call Us @ 770.521.2151

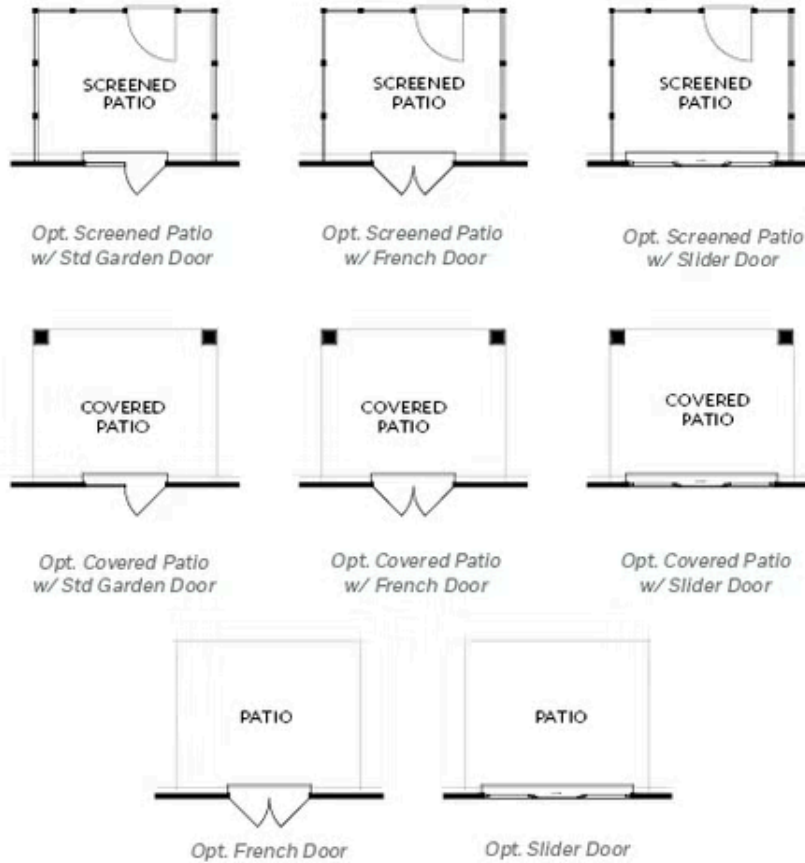


BASEMENT

Elevation C, I, K

Want to Know More  
About This Home?

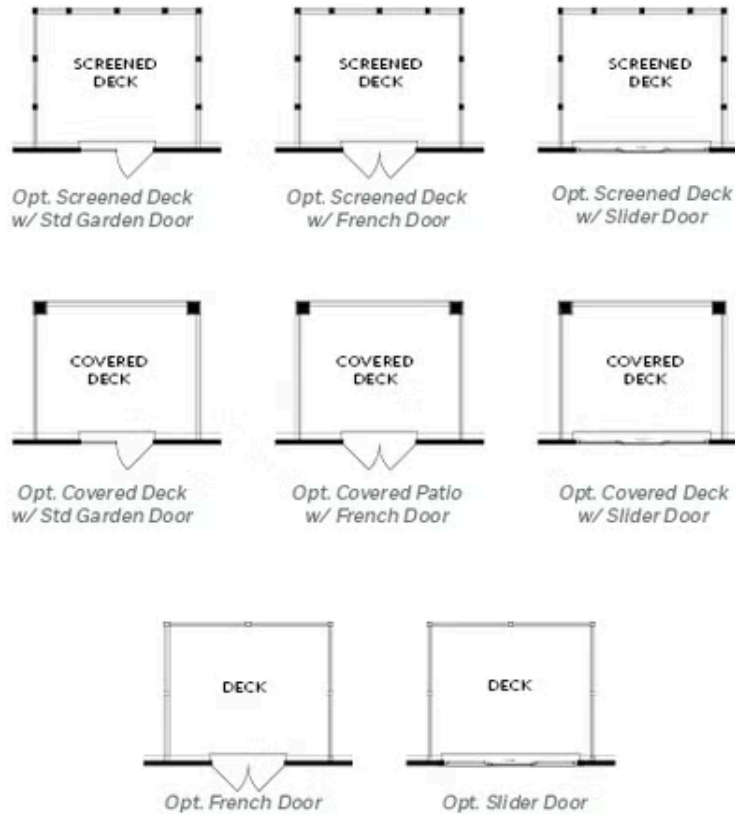
CONTACT OUR COMMUNITY SALES MANAGER  
Call Us @ 770.521.2151



FIRST FLOOR  
PATIO OPTIONS  
ON A SLAB

Want to Know More  
About This Home?

CONTACT OUR COMMUNITY SALES MANAGER  
Call Us @ 770.521.2151

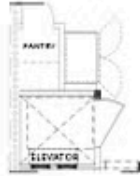


FIRST FLOOR  
DECK OPTIONS  
ON A BASEMENT

Want to Know More  
About This Home?

CONTACT OUR COMMUNITY SALES MANAGER  
Call Us @ 770.521.2151





Opt. Elevator  
First Floor



Opt. Fireplace



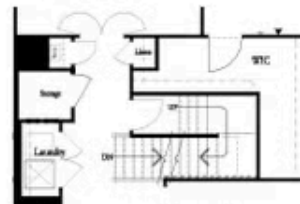
Opt. Linear Fireplace



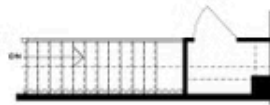
Owner's Suite & Bath  
\*No Trey or Vaulted Ceilings w/ 3rd Floor



Opt. Elevator  
Second Floor



2nd Floor Stairs to 3rd Floor



Opt. Open Rail on 3rd Floor



Opt. Elevator  
Third Floor

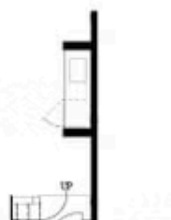
### OPTIONS ON A SLAB WITH 3RD FLOOR

Want to Know More  
About This Home?

CONTACT OUR COMMUNITY SALES MANAGER  
Call Us @ 770.521.2151



Opt. Shower



Opt. Wet Bar



Opt. Elevator  
Basement



Opt. Elevator  
First Floor



Opt. Fireplace



Opt. Linear Fireplace



Opt. Elevator  
Second Floor

#### OPTIONS ON A BASEMENT

Want to Know More  
About This Home?

CONTACT OUR COMMUNITY SALES MANAGER  
Call Us @ 770.521.2151