



PRICED AT  
**\$867,650**

 **3018 Sq Ft**

 **4 Beds**

 **3.5 Baths**

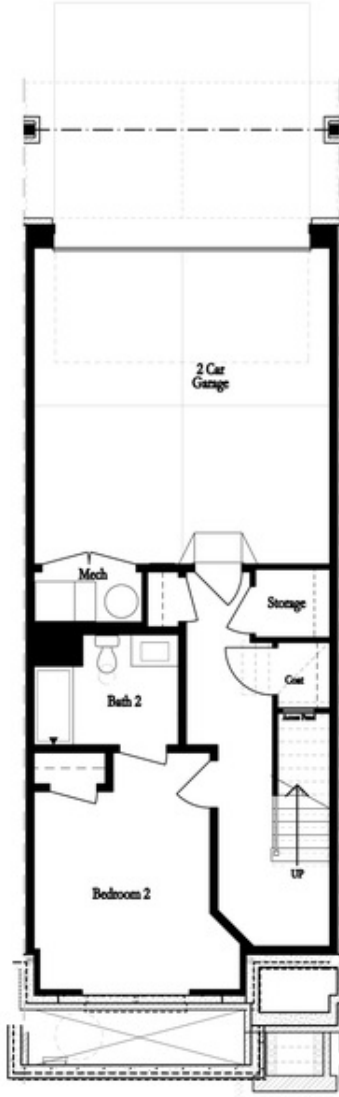
 **2 Car Garage**

 **3.0 Story**

**New Year, New Home, New You! NEW ELLINGTON BASEMENT PLAN offering 4 bedrooms and 3.5 bathrooms with a FINISHED BASEMENT. Ward's Crossing by The Providence Group is in the highly regarded Johns Creek community, known for its excellent schools, recreational amenities, shopping, dining, and vibrant cultural scene. Ward's Crossing is a Gated community with a pool and all exterior maintenance and insurance covered by your low HOA fees. This is a rare opportunity for new construction townhomes. At TPG, we value the safety of our customers, team members, and vendor team. Our communities are active construction zones and may be unsafe to visit at certain stages of construction. Due to this, we ask all agents visiting the community with their clients to come to the office before visiting any listed homes. Please note that during your visit, you will be escorted by a TPG employee and may be required to wear flat, closed-toe shoes and a hard hat. [The ELLINGTON -BASEMENT] Ward's Crossing is a Gated community with a pool and all exterior maintenance and insurance covered by your low HOA fees. This is a rare opportunity for new construction townhomes. At TPG, we value the safety of our customers, team members, ...**

**Want to Know More  
About This Home?**

**CONTACT OUR COMMUNITY SALES MANAGER**  
**Call Us @ 770.521.2151**



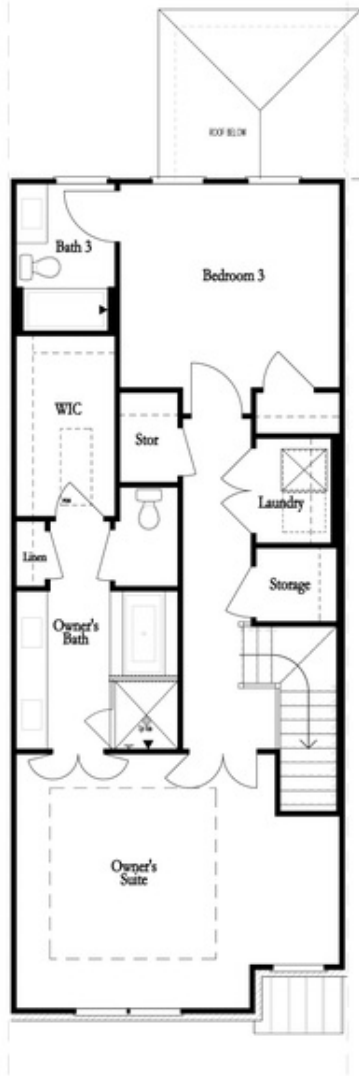
FIRST FLOOR



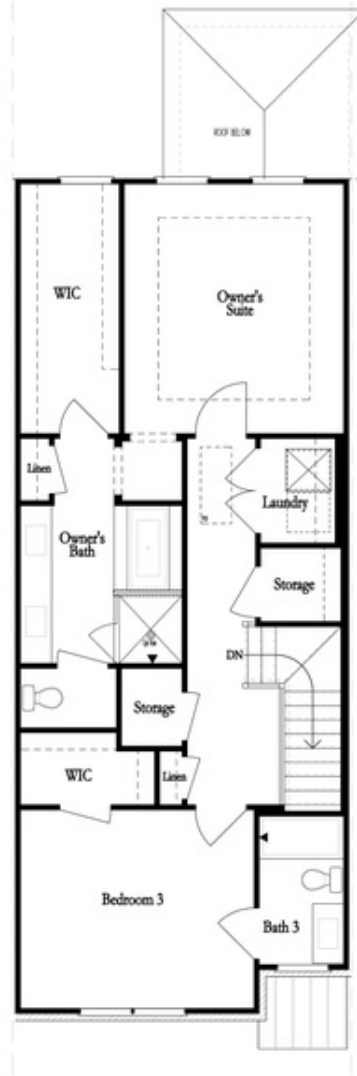
SECOND FLOOR

Want to Know More  
 About This Home?

CONTACT OUR COMMUNITY SALES MANAGER  
 Call Us @ 770.521.2151



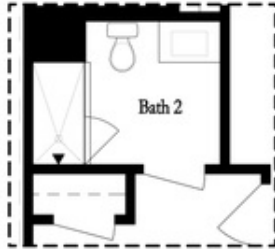
THIRD FLOOR  
 OWNER'S FRONT



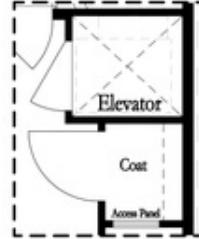
THIRD FLOOR  
 OWNER'S REAR

Want to Know More  
 About This Home?

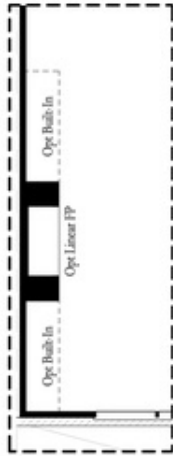
CONTACT OUR COMMUNITY SALES MANAGER  
 Call Us @ 770.521.2151



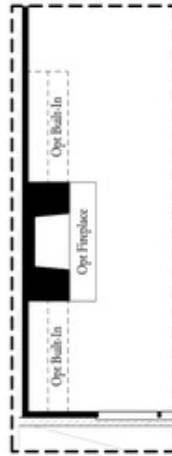
*Opt. Shower  
 on First Floor Bath*



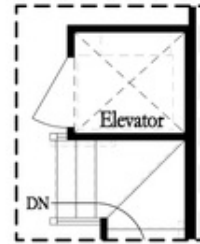
*Opt. Elevator  
 on First Floor*



*Opt. Linear Fireplace*



*Opt. Fireplace*

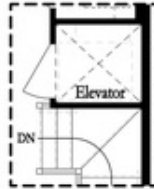


*Opt. Elevator  
 on Second Floor*

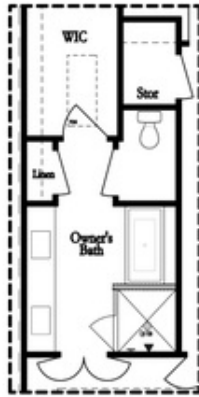
OPTIONS

**Want to Know More  
 About This Home?**

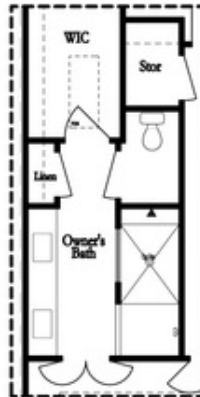
**CONTACT OUR COMMUNITY SALES MANAGER**  
**Call Us @ 770.521.2151**



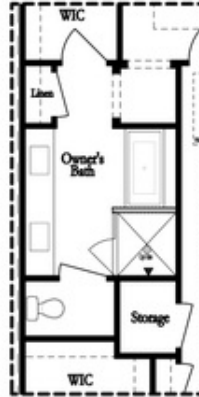
*Opt. Elevator  
 on Third Floor*



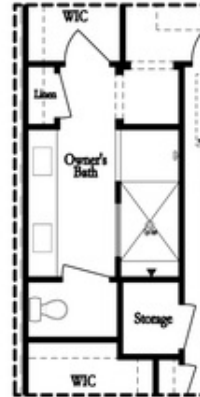
*Opt. Free Standing  
 Tub w/ Shower*



*Opt. Walk-Through Shower*



*Opt. Free Standing  
 Tub w/ Shower*



*Opt. Walk-Through Shower*

OWNER'S SUITE FRONT

OWNER'S SUITE REAR

OPTIONS

**Want to Know More  
 About This Home?**

**CONTACT OUR COMMUNITY SALES MANAGER**  
**Call Us @ 770.521.2151**