



PRICED AT  
**\$878,950**

 3034 Sq Ft

 4 Beds

 3.5 Baths

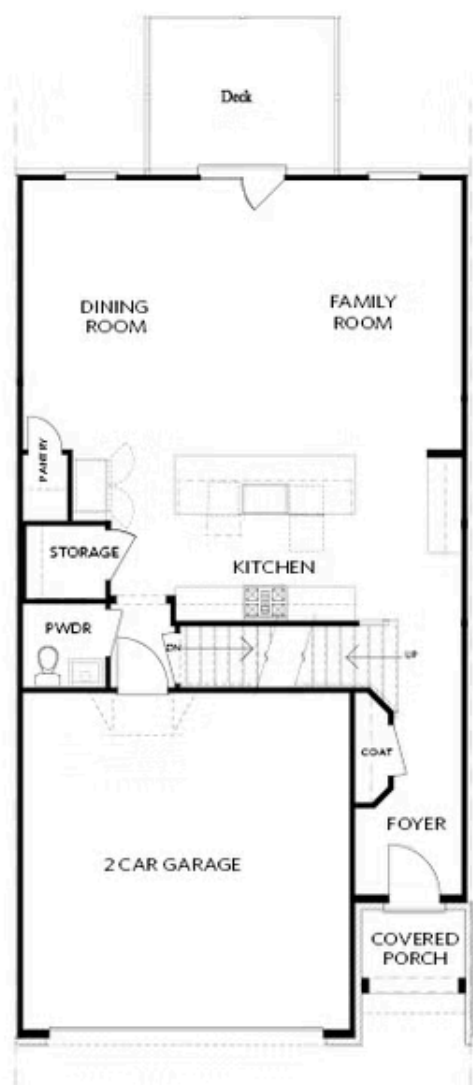
 2 Car Garage

 3.0 Story

Spring Into Your New Home! Welcome to The Ellington with Finished Basement @ Wards Crossing. This home is 4 bedrooms, 3.5 baths and offers over 3000 square feet of functional living space! With the living level located on the main, it truly lives like a single-family home. The beautifully designed entertainer's kitchen features Bell cabinetry, GE Profile appliances, an extra-large island and plenty of cabinet space! The kitchen opens up to the family room, allowing for the perfect space to host loved ones or have a quiet night at home, lying next to your linear gas fireplace, which is detailed beautifully with a surround of your choice. Triple slider door opens to a covered and screened porch and a gorgeous fenced in backyard with wooded views! Gorgeous hardwoods throughout all main living areas. The primary bathroom has both a soaking tub and walk in shower with beautiful tile details to be determined by you at our state of the art design center. The basement level of the home includes the super spacious fourth bedroom and bathroom as well as a media room for entertaining. The media room also features a beautiful built in wet-bar which includes a sink and a ...

**Want to Know More  
About This Home?**

CONTACT OUR COMMUNITY SALES MANAGER  
Call Us @ 770.521.2151

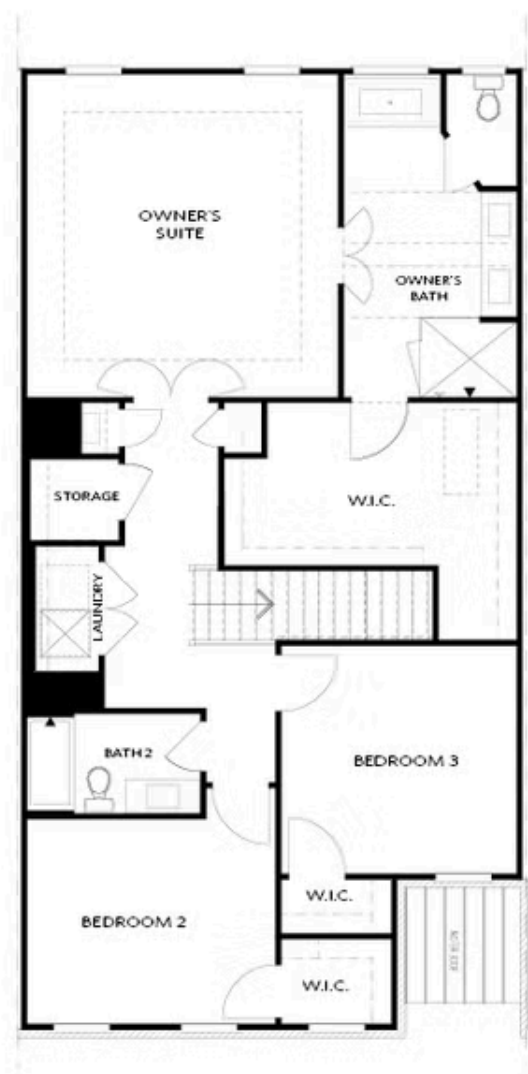


FIRST FLOOR

Elevation C, I, K

Want to Know More  
About This Home?

CONTACT OUR COMMUNITY SALES MANAGER  
Call Us @ 770.521.2151

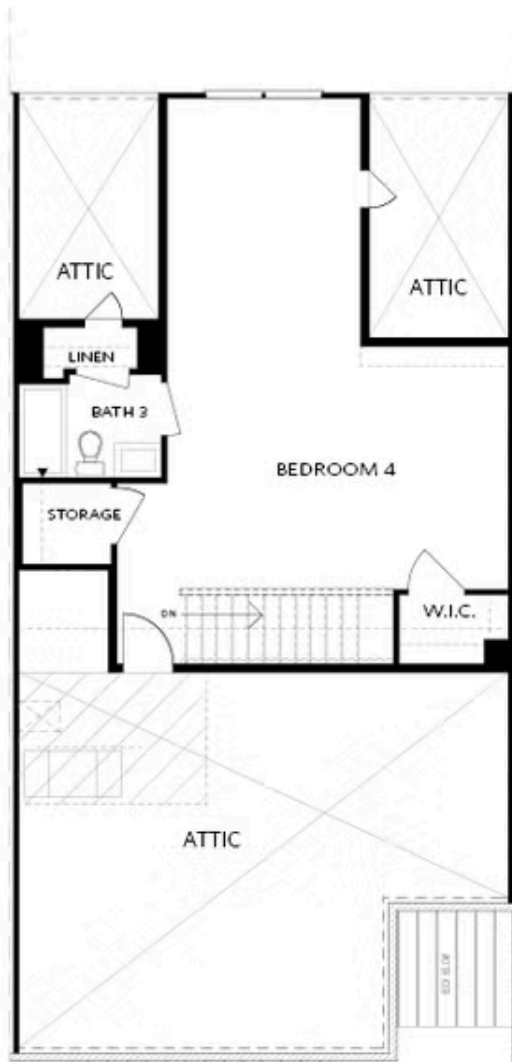


SECOND FLOOR

Elevation C, I, K

**Want to Know More  
About This Home?**

CONTACT OUR COMMUNITY SALES MANAGER  
Call Us @ 770.521.2151

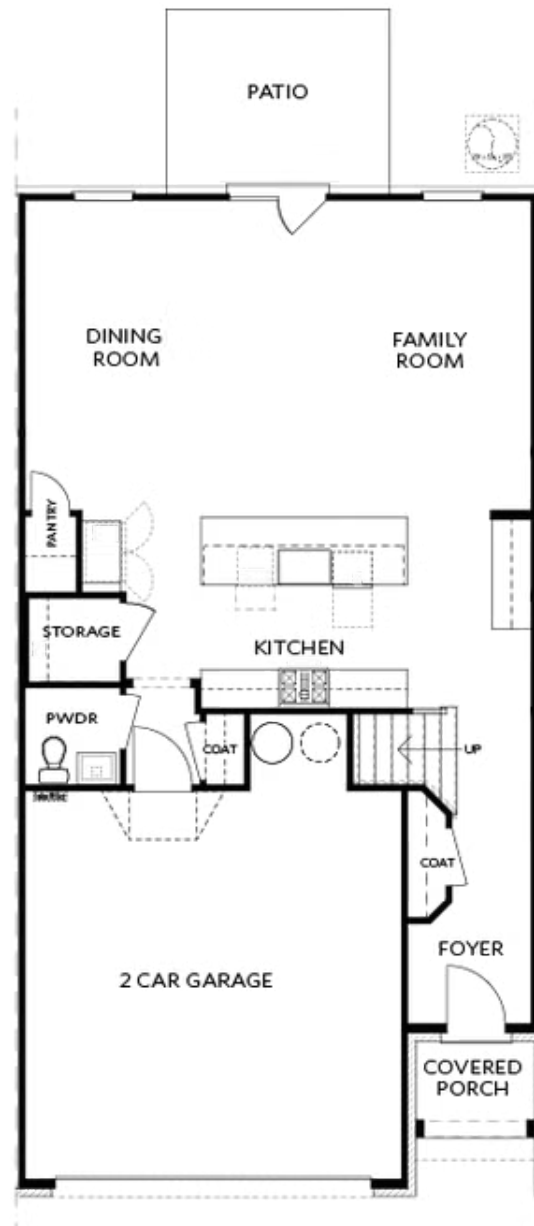


THIRD FLOOR

Elevation C, I, K

Want to Know More  
About This Home?

CONTACT OUR COMMUNITY SALES MANAGER  
Call Us @ 770.521.2151



Elevations C, I, K

Want to Know More  
About This Home?

CONTACT OUR COMMUNITY SALES MANAGER  
Call Us @ 770.521.2151

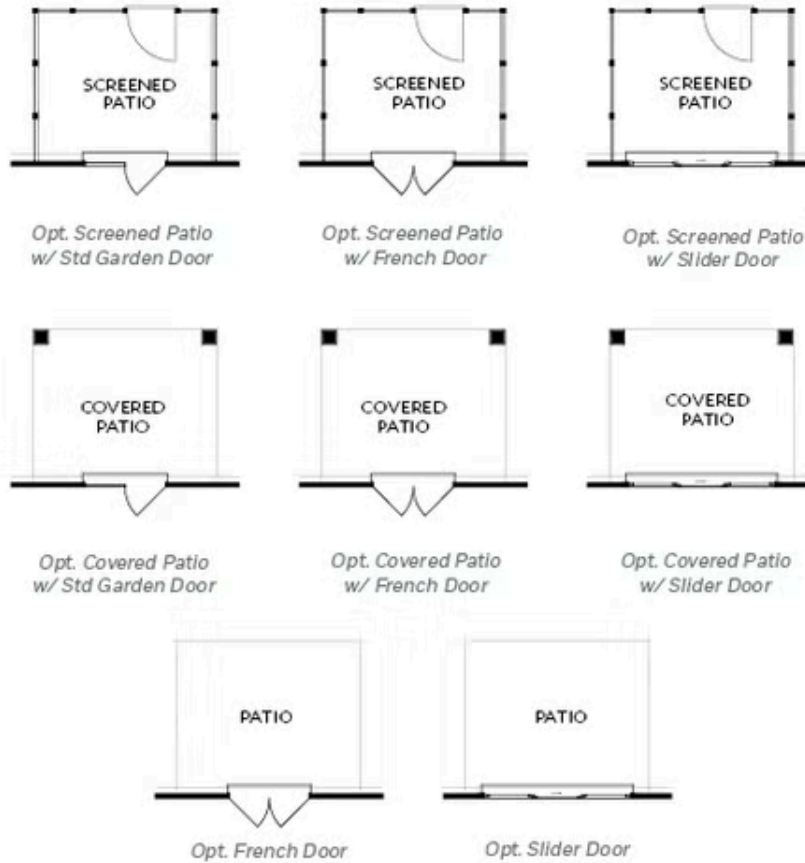


BASEMENT

Elevation C, I, K

Want to Know More  
About This Home?

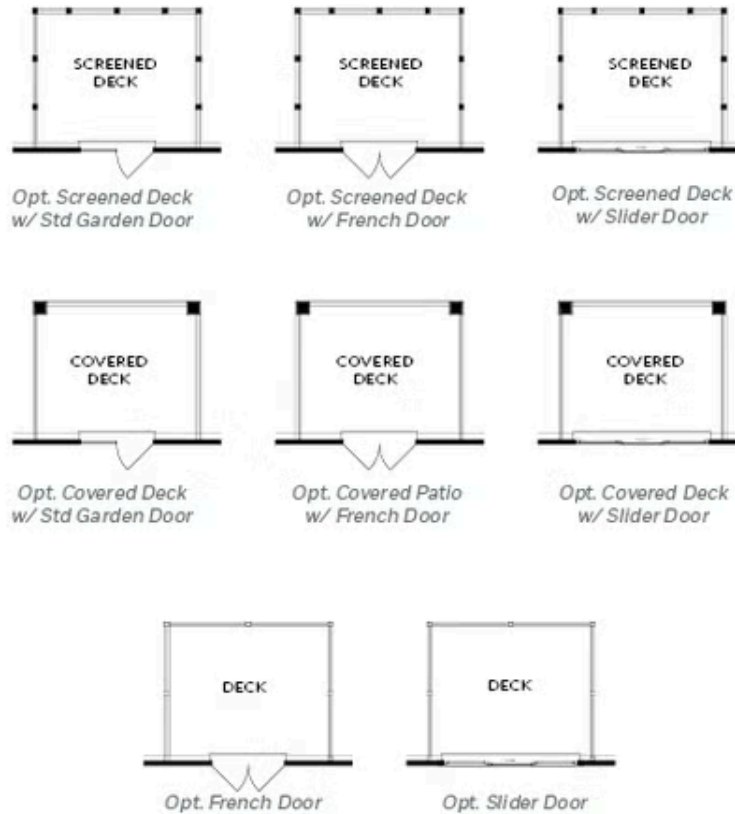
CONTACT OUR COMMUNITY SALES MANAGER  
Call Us @ 770.521.2151



FIRST FLOOR  
PATIO OPTIONS  
ON A SLAB

Want to Know More  
About This Home?

CONTACT OUR COMMUNITY SALES MANAGER  
Call Us @ 770.521.2151

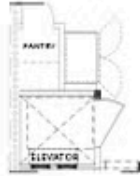


FIRST FLOOR  
DECK OPTIONS  
ON A BASEMENT

Want to Know More  
About This Home?

CONTACT OUR COMMUNITY SALES MANAGER  
Call Us @ 770.521.2151





Opt. Elevator  
First Floor



Opt. Fireplace



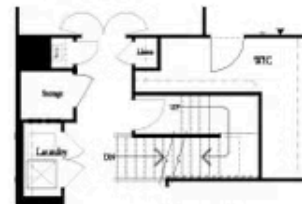
Opt. Linear Fireplace



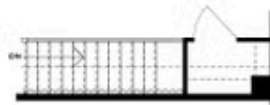
Owner's Suite & Bath  
\*No Trey or Vaulted Ceilings w/ 3rd Floor



Opt. Elevator  
Second Floor



2nd Floor Stairs to 3rd Floor



Opt. Open Rail on 3rd Floor



Opt. Elevator  
Third Floor

### OPTIONS ON A SLAB WITH 3RD FLOOR

Want to Know More  
About This Home?

CONTACT OUR COMMUNITY SALES MANAGER  
Call Us @ 770.521.2151



Opt. Shower



Opt. Wet Bar



Opt. Elevator  
Basement



Opt. Elevator  
First Floor



Opt. Fireplace



Opt. Linear Fireplace



Opt. Elevator  
Second Floor

#### OPTIONS ON A BASEMENT

Want to Know More  
About This Home?

CONTACT OUR COMMUNITY SALES MANAGER  
Call Us @ 770.521.2151