

PRICED AT
\$878,950

 3034 Sq Ft

 4 Beds

 3.5 Baths

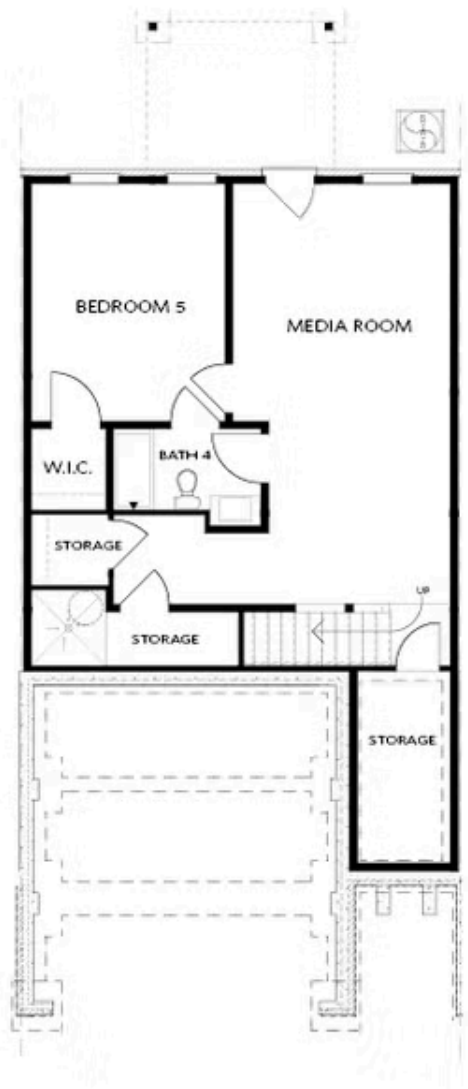
 2 Car Garage

 3.0 Story

ASK US HOW TO SCORE MORE SAVINGS THROUGH THIS WEEKEND ONLY (9/30/25)!!! Choose the path to homeownership that fits your life - with low rates, appliances, closing costs, and more. Offer ends Aug 31st, 2025. Welcome to The Ellington with Finished Basement @ Wards Crossing. This home is 4 bedrooms, 3.5 baths and offers over 3000 square feet of functional living space! With the living level located on the main, it truly lives like a single-family home. The beautifully designed entertainer's kitchen features Bell cabinetry, GE Profile appliances, an extra-large island and plenty of cabinet space! The kitchen opens up to the family room, allowing for the perfect space to host loved ones or have a quiet night at home, lying next to your linear gas fireplace, which is detailed beautifully with a surround of your choice. Triple slider door opens to a covered and screened porch and a gorgeous fenced in backyard with wooded views! Gorgeous hardwoods throughout all main living areas. The primary bathroom has both a soaking tub and walk in shower with beautiful tile details to be determined by you at our state of the art design center. The basement level of the home includes the ...

**Want to Know More
About This Home?**

CONTACT OUR COMMUNITY SALES MANAGER
Call Us @ 770.521.2151



BASEMENT

Elevation C, I, K

Want to Know More
About This Home?

CONTACT OUR COMMUNITY SALES MANAGER
Call Us @ 770.521.2151

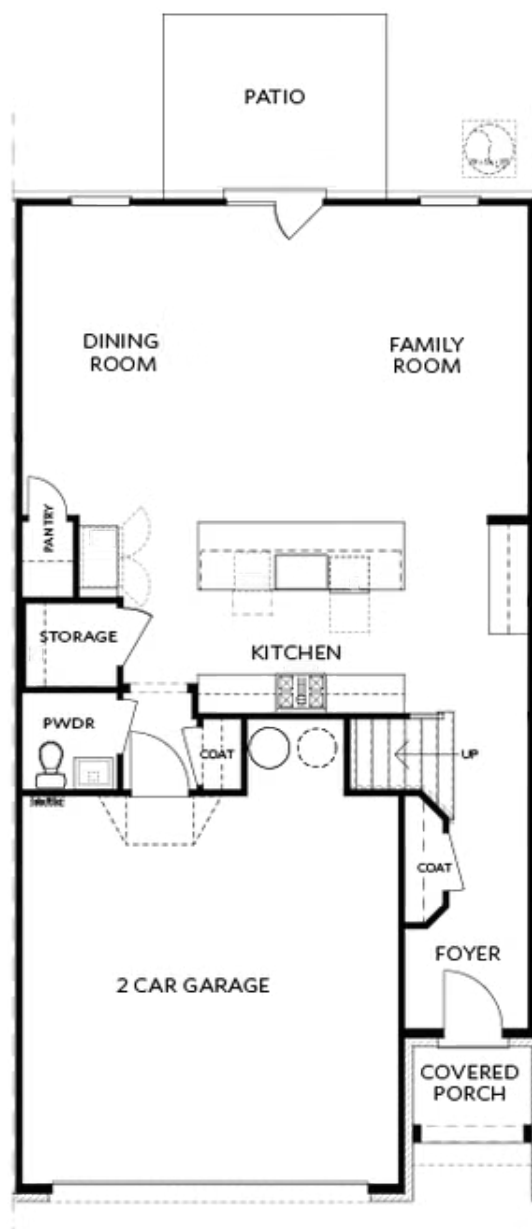


FIRST FLOOR

Elevation C, I, K

Want to Know More
About This Home?

CONTACT OUR COMMUNITY SALES MANAGER
Call Us @ 770.521.2151



Elevations C, I, K

**Want to Know More
About This Home?**

CONTACT OUR COMMUNITY SALES MANAGER
Call Us @ 770.521.2151

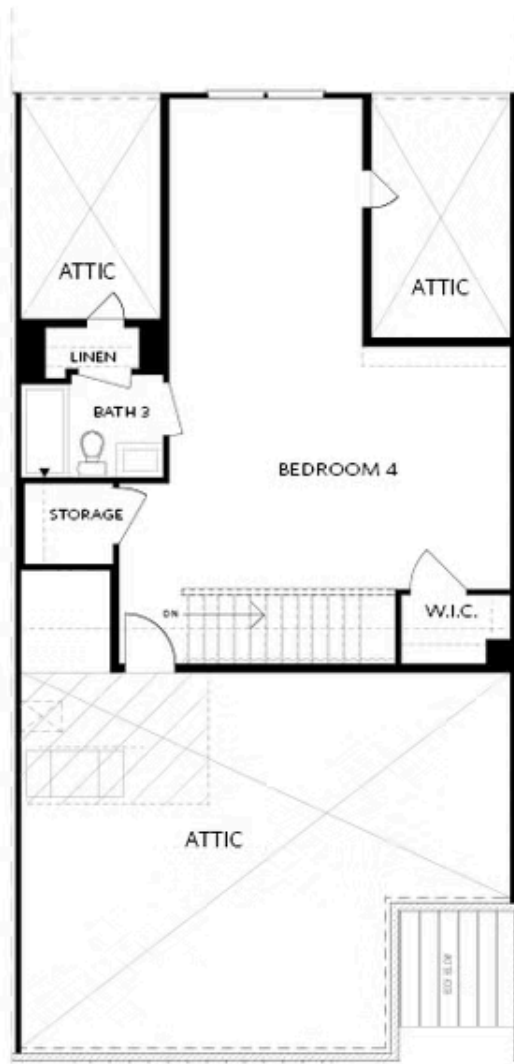


SECOND FLOOR

Elevation C, I, K

Want to Know More
About This Home?

CONTACT OUR COMMUNITY SALES MANAGER
Call Us @ 770.521.2151

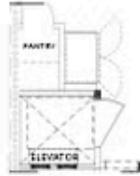


THIRD FLOOR

Elevation C, I, K

Want to Know More
About This Home?

CONTACT OUR COMMUNITY SALES MANAGER
Call Us @ 770.521.2151



Opt. Elevator
First Floor



Opt. Fireplace



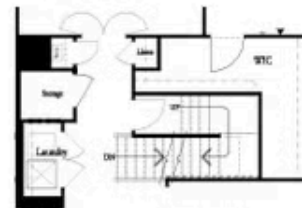
Opt. Linear Fireplace



Owner's Suite & Bath
*No Trey or Vaulted Ceilings w/ 3rd Floor



Opt. Elevator
Second Floor



2nd Floor Stairs to 3rd Floor



Opt. Open Rail on 3rd Floor



Opt. Elevator
Third Floor

OPTIONS ON A SLAB WITH 3RD FLOOR

Want to Know More
About This Home?

CONTACT OUR COMMUNITY SALES MANAGER
Call Us @ 770.521.2151