



PRICED AT
\$714,320

 2400 Sq Ft

 4 Beds

 3.5 Baths

 2 Car Garage

 3.0 Story

HOME of the Month - Welcome to the brand-new Benton IV floorplan at Ward's Crossing in Johns Creek! This beautiful 4-bedroom design features 2400 square feet of living space on three levels. The first level of the home features the first full bedroom with an en suite, which makes for a perfect office or guest bedroom. The front door enters on the main level of the home, where you will find a beautiful open design featuring 10 ft. ceilings and a gorgeous chef's kitchen with tons of cabinets, a walk-in pantry, and GE Profile appliances. The spacious family room features a beautiful linear gas fireplace. A laundry room is located on this level, in addition to a beautiful sunroom that walks out onto a fabulous deck. Tons of light fill this main level with an abundance of windows! On the third level, you will find the primary suite, which features a huge walk-in closet and a spacious bath with an extra-large walk-in shower, a drying area, and a double vanity. Two additional, nice-sized bedrooms share a hallway bathroom and an outdoor deck off bedroom 3! This home is Energy Star Certified and built with the highest-quality materials, including Thermacrete and ...

**Want to Know More
About This Home?**

CONTACT OUR COMMUNITY SALES MANAGER
Call Us @ 770.521.2151



Elevation S2

Want to Know More
About This Home?

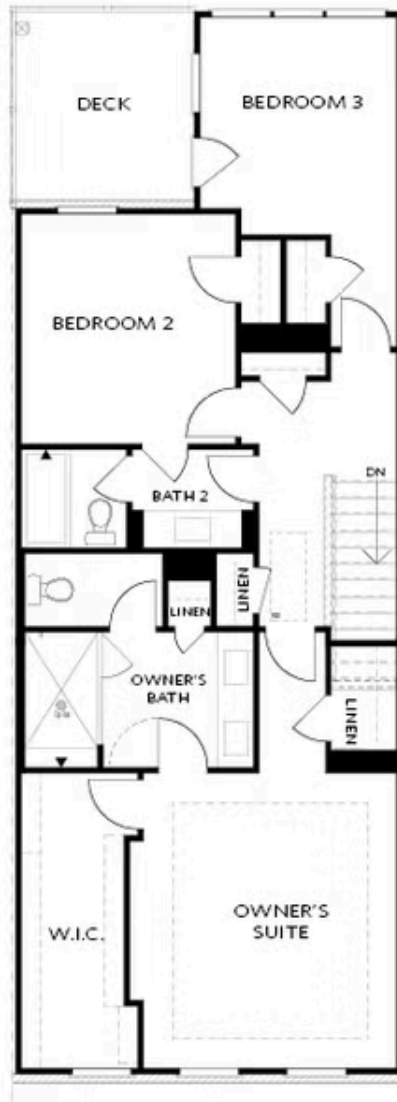
CONTACT OUR COMMUNITY SALES MANAGER
Call Us @ 770.521.2151



Elevation S2

Want to Know More
About This Home?

CONTACT OUR COMMUNITY SALES MANAGER
Call Us @ 770.521.2151



Elevation S2

Want to Know More
About This Home?

CONTACT OUR COMMUNITY SALES MANAGER
Call Us @ 770.521.2151



OPT Shower

TERRACE



OPT Fireplac



OPT Linear Fireplace

SECOND FLOOR



OPT Walk-Through Shower



OPT Freestanding Tub with
 Seperate Shower



OPT Decked Tub with
 Seperate Shower



OPT Open Rail

THIRD FLOOR

Want to Know More
 About This Home?

CONTACT OUR COMMUNITY SALES MANAGER
 Call Us @ 770.521.2151