








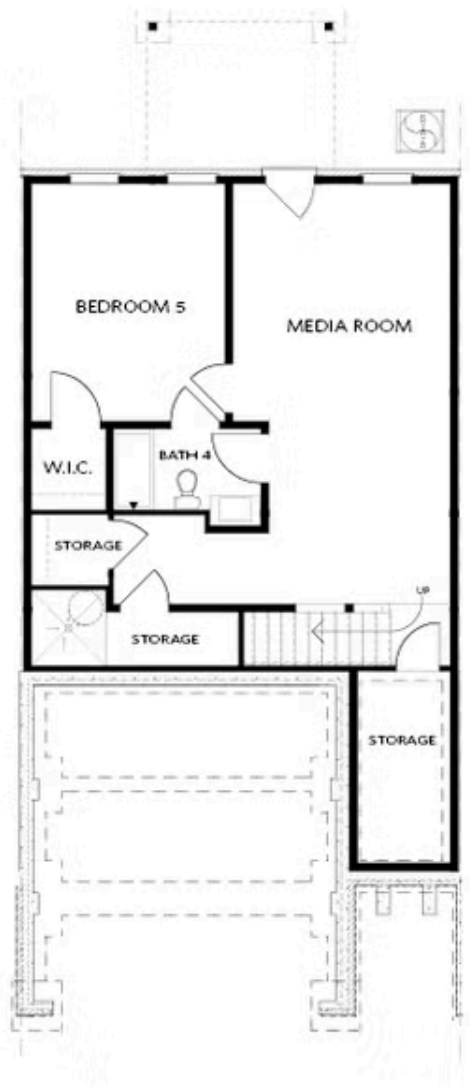
PRICED AT
\$917,430

-  3018 Sq Ft
-  4 Beds
-  3.5 Baths
-  2 Car Garage
-  3.0 Story

Your Home, Your Way with \$20k! Choose the path to homeownership that fits your life - with low rates, appliances, closing costs, and more. Offer ends July 31st, 2025. The ELLINGTON with a FINISHED BASEMENT in Ward's Crossing by The Providence Group in Johns Creek. Johns Creek is ranked the #1 Place to Live by U.S. News & World Report. This home will be Move-In Ready in July or August. This END UNIT, complete with a FINISHED BASEMENT, includes a bedroom, full bath, media room, wet bar, and covered porch with a fence in the backyard. This home has an amazing private wooded view, overlooking a protected tree reserve. The first-floor main level comprises a kitchen and family room with a 45" linear, ventless fireplace and a dining area. There is a screened-in deck off the family room. The second floor hosts the primary bedroom, bath, and two secondary bedrooms. The kitchen showcases upgraded cabinetry with an Arctic White perimeter and an oatmeal-colored island. The countertop features a classic Cambria white with soft brown and gray veins, paired with a timeless subway tile backsplash and upgraded Delta Trinsic champagne bronze plumbing fixtures throughout. Ward's Crossing is being built to a higher ...

**Want to Know More
About This Home?**

CONTACT OUR COMMUNITY SALES MANAGER
Call Us @ 770.521.2151



BASEMENT

Elevation C, I, K

Want to Know More
About This Home?

CONTACT OUR COMMUNITY SALES MANAGER
Call Us @ 770.521.2151

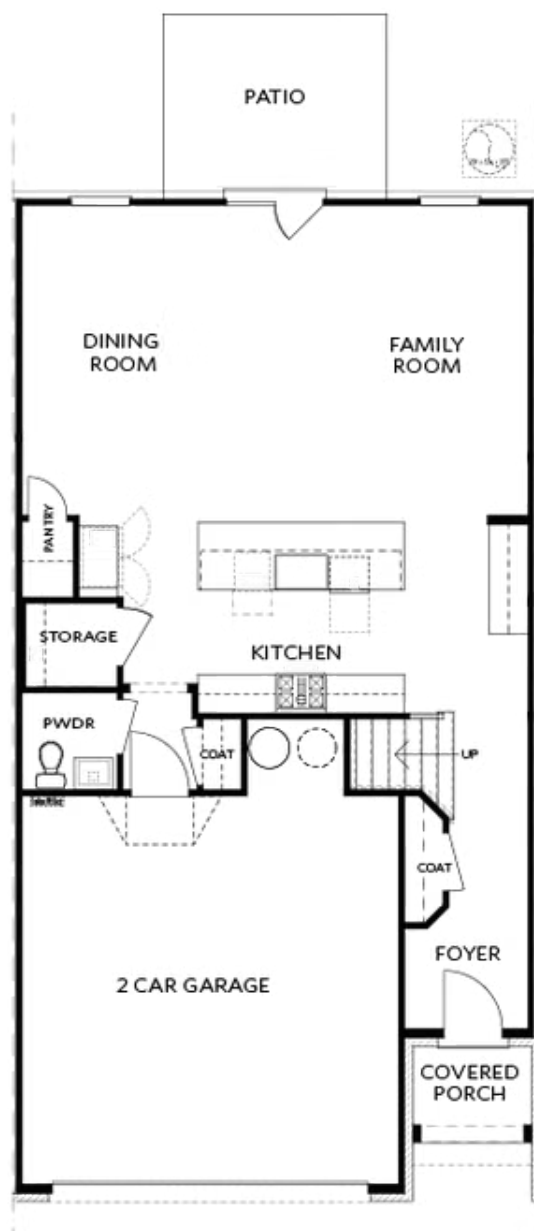


FIRST FLOOR

Elevation C, I, K

Want to Know More
About This Home?

CONTACT OUR COMMUNITY SALES MANAGER
Call Us @ 770.521.2151



Elevations C, I, K

Want to Know More
About This Home?

CONTACT OUR COMMUNITY SALES MANAGER
Call Us @ 770.521.2151

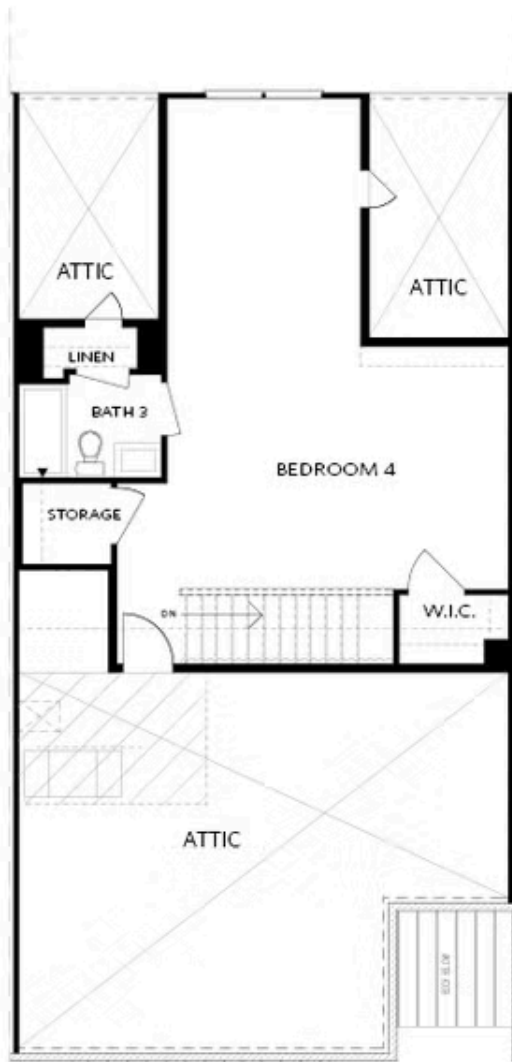


SECOND FLOOR

Elevation C, I, K

Want to Know More
About This Home?

CONTACT OUR COMMUNITY SALES MANAGER
Call Us @ 770.521.2151

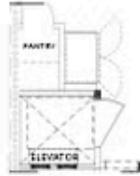


THIRD FLOOR

Elevation C, I, K

Want to Know More
About This Home?

CONTACT OUR COMMUNITY SALES MANAGER
Call Us @ 770.521.2151



Opt. Elevator
First Floor



Opt. Fireplace



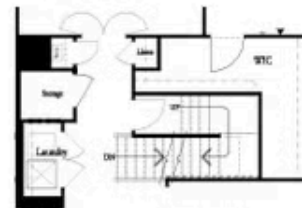
Opt. Linear Fireplace



Owner's Suite & Bath
*No Trey or Vaulted Ceilings w/ 3rd Floor



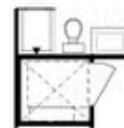
Opt. Elevator
Second Floor



2nd Floor Stairs to 3rd Floor



Opt. Open Rail on 3rd Floor



Opt. Elevator
Third Floor

OPTIONS ON A SLAB WITH 3RD FLOOR

Want to Know More
About This Home?

CONTACT OUR COMMUNITY SALES MANAGER
Call Us @ 770.521.2151