








PRICED AT  
**\$723,100**

-  2516 Sq Ft
-  3 Beds
-  3.5 Baths
-  2 Car Garage
-  3.0 Story

Fall Into SAVINGS with a \$ 20,000 Fall Incentive - Sales Price reflects the \$ 20,000 incentive. The Jacobsen II features 3 bedrooms, 3.5 bathrooms, and a rear-entry 2-car garage. The photos illustrate similar properties, as the home is currently UNDER CONSTRUCTION and will be completed in August/SEPTEMBER 2025! The entry on the main living level opens to a spacious family room, dining area, and kitchen, which includes a sunroom and deck! The main living level boasts 10-foot ceilings and hardwood flooring. The terrace level features a fantastic guest retreat, complete with a full bathroom, a walk-in shower, and three storage closets. The primary and secondary bedrooms are located on the 3rd floor, each featuring an ensuite full bathroom. Each home features a stackable, elevator-ready storage closet on every floor. The homes are Energy Star Certified; they are built to a higher standard and adhere to strict energy efficiency guidelines, delivering superior performance, quality, and lower utility bills. Ward's Crossing, developed by The Providence Group, is situated in the highly regarded Johns Creek community, renowned for its excellent schools, recreational amenities, shopping, dining, and vibrant cultural scene. Ward's Crossing is a gated community with a pool, and your low HOA ...

**Want to Know More  
About This Home?**

CONTACT OUR COMMUNITY SALES MANAGER  
Call Us @ 770.521.2151



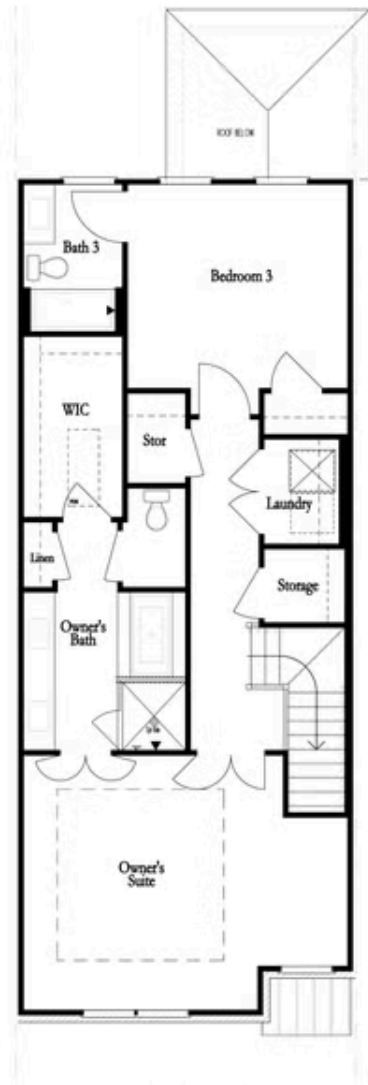
FIRST FLOOR



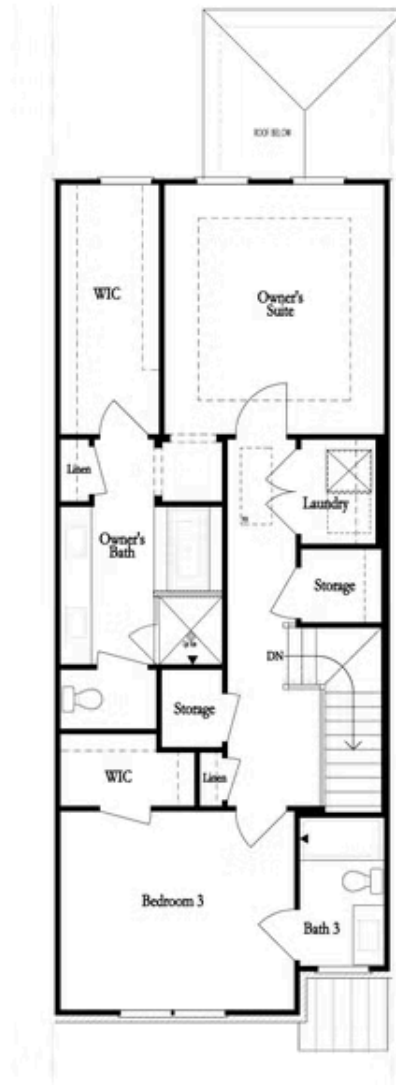
SECOND FLOOR

Want to Know More  
About This Home?

CONTACT OUR COMMUNITY SALES MANAGER  
Call Us @ 770.521.2151



THIRD FLOOR  
OWNER'S FRONT



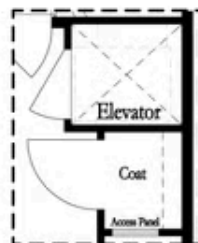
THIRD FLOOR  
OWNER'S REAR

Want to Know More  
About This Home?

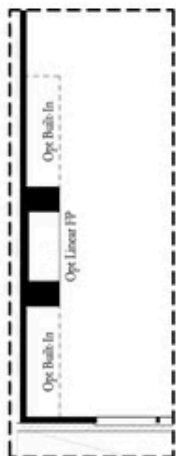
CONTACT OUR COMMUNITY SALES MANAGER  
Call Us @ 770.521.2151



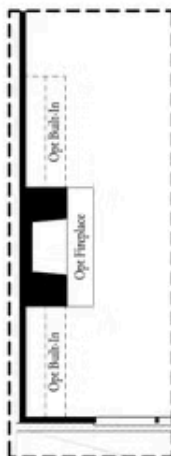
*Opt. Shower  
on First Floor Bath*



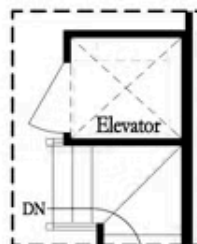
*Opt. Elevator  
on First Floor*



*Opt. Linear Fireplace*



*Opt. Fireplace*

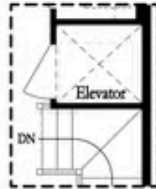


*Opt. Elevator  
on Second Floor*

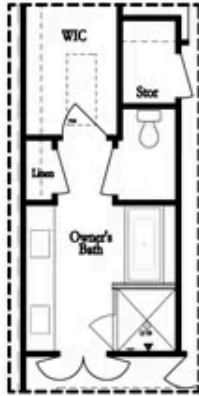
## OPTIONS

**Want to Know More  
About This Home?**

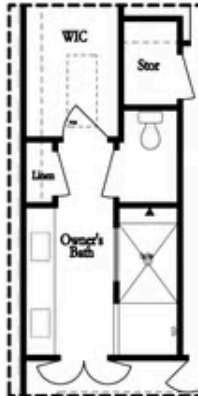
CONTACT OUR COMMUNITY SALES MANAGER  
Call Us @ 770.521.2151



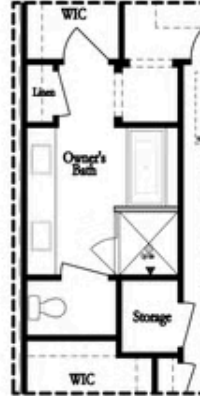
Opt. Elevator  
on Third Floor



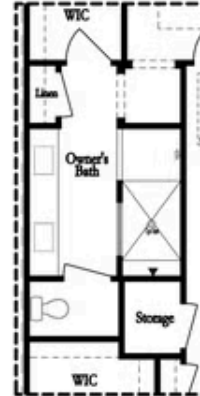
Opt. Free Standing  
Tub w/ Shower



Opt. Walk-Through Shower



Opt. Free Standing  
Tub w/ Shower



Opt. Walk-Through Shower

OWNER'S SUITE FRONT

OWNER'S SUITE REAR

OPTIONS

Want to Know More  
About This Home?

CONTACT OUR COMMUNITY SALES MANAGER  
Call Us @ 770.521.2151