








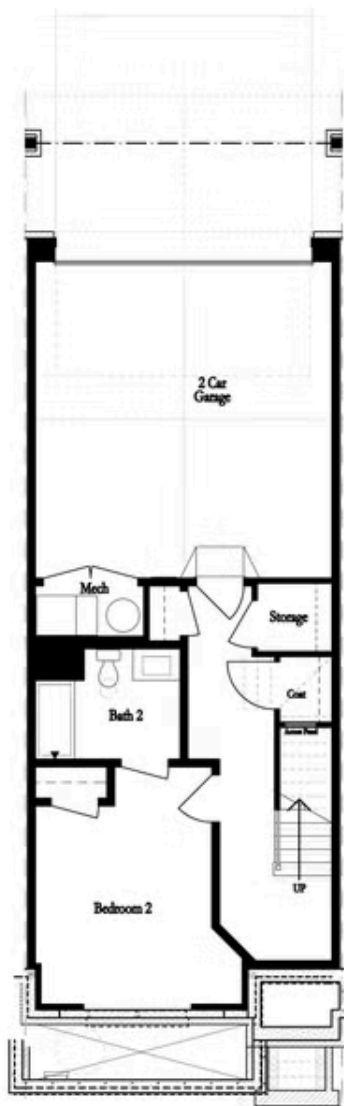
PRICED AT  
**\$713,100**

-  2516 Sq Ft
-  3 Beds
-  3.5 Baths
-  2 Car Garage
-  3.0 Story

New Year, New Home - Enjoy a 30K promotion on contracts written by the end of January. The 30K incentive has reduced the sales price, and the home is MOVE-IN READY. The Jacobsen II by The Providence Group features 3 bedrooms, 3.5 bathrooms, and a rear-entry 2-car garage. The main living level opens to a spacious family room, dining area, and kitchen, which includes a sunroom and deck! The main living level boasts 10-foot ceilings and hardwood flooring. The terrace level features a fantastic guest retreat with a full bathroom, a walk-in shower, and three storage closets. The primary and secondary bedrooms are on the 3rd floor, each with an en suite full bathroom. Each home includes a stackable, elevator-ready storage closet on every floor. The homes are Energy Star Certified; they are built to a higher standard and adhere to strict energy-efficiency guidelines, delivering superior performance, quality, and lower utility bills. Ward's Crossing, developed by The Providence Group, is situated in the highly regarded Johns Creek community, renowned for its excellent schools, recreational amenities, shopping, dining, and vibrant cultural scene. Ward's Crossing is a gated community with a pool, and your low HOA fees cover all exterior maintenance and ...

**Want to Know More  
About This Home?**

CONTACT OUR COMMUNITY SALES MANAGER  
Call Us @ 770.521.2151



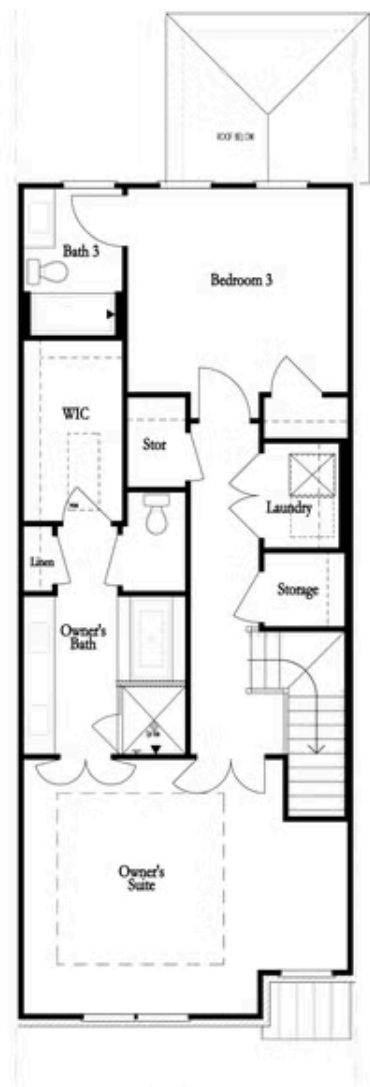
FIRST FLOOR



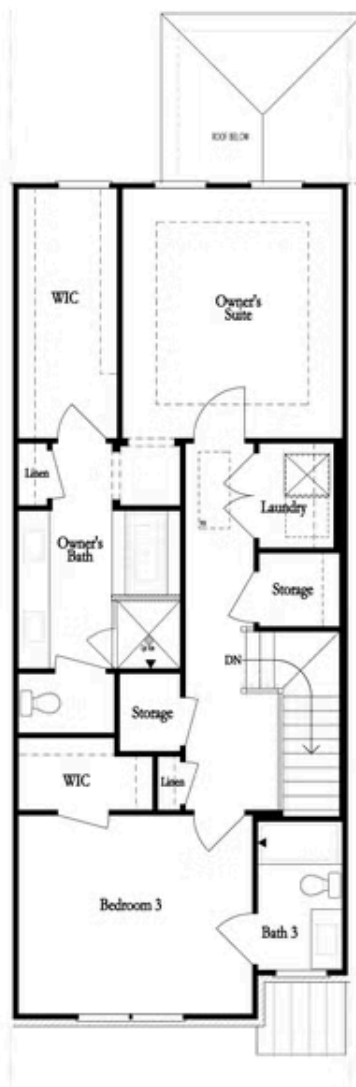
SECOND FLOOR

Want to Know More  
About This Home?

CONTACT OUR COMMUNITY SALES MANAGER  
Call Us @ 770.521.2151



THIRD FLOOR  
OWNER'S FRONT



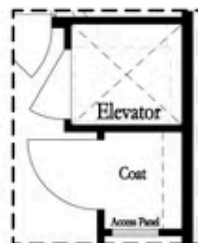
THIRD FLOOR  
OWNER'S REAR

Want to Know More  
About This Home?

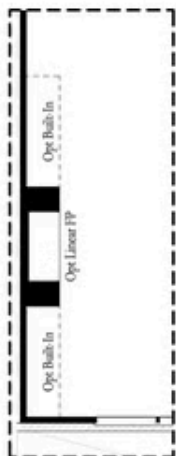
CONTACT OUR COMMUNITY SALES MANAGER  
Call Us @ 770.521.2151



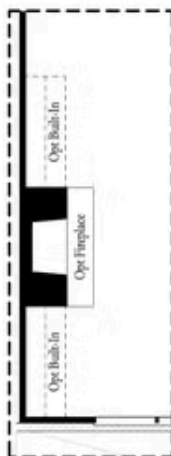
*Opt. Shower  
on First Floor Bath*



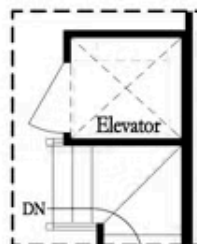
*Opt. Elevator  
on First Floor*



*Opt. Linear Fireplace*



*Opt. Fireplace*

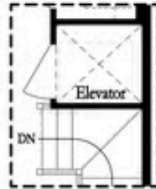


*Opt. Elevator  
on Second Floor*

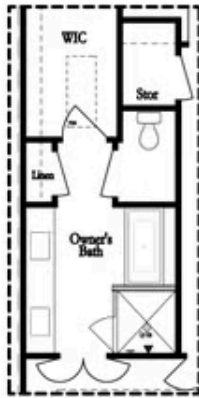
## OPTIONS

**Want to Know More  
About This Home?**

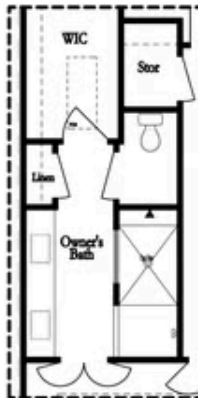
CONTACT OUR COMMUNITY SALES MANAGER  
Call Us @ 770.521.2151



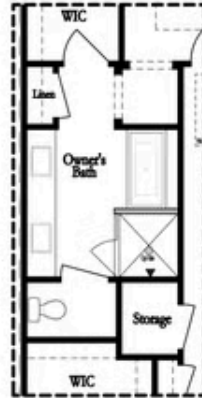
Opt. Elevator  
on Third Floor



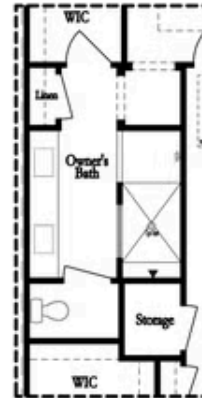
Opt. Free Standing  
Tub w/ Shower



Opt. Walk-Through Shower



Opt. Free Standing  
Tub w/ Shower



Opt. Walk-Through Shower

OWNER'S SUITE FRONT

OWNER'S SUITE REAR

OPTIONS

Want to Know More  
About This Home?

CONTACT OUR COMMUNITY SALES MANAGER  
Call Us @ 770.521.2151