



PRICED AT
\$708,100

 2516 Sq Ft

 3 Beds

 3.5 Baths

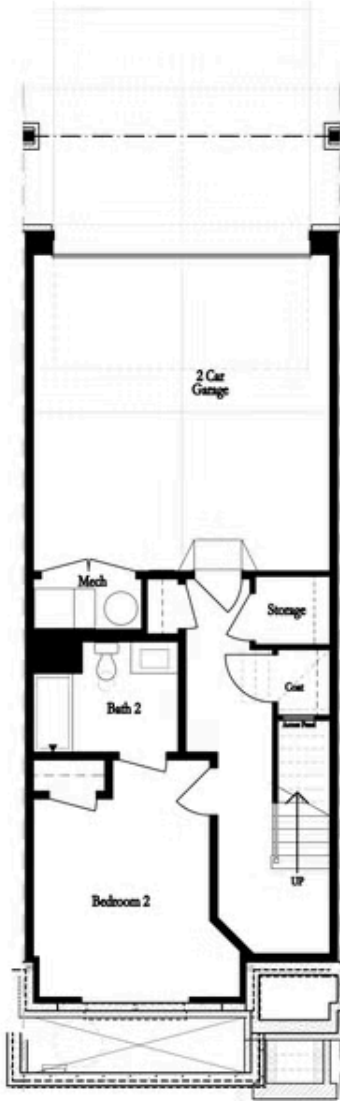
 2 Car Garage

 3.0 Story

Elevate Your Savings! Enjoy a \$35K move in ready luxury package! Please note that the \$35K incentive has already been deducted from this sales price. This home is READY NOW, just in time for Spring! The Jacobsen II by The Providence Group features 3 bedrooms, 3.5 bathrooms, and a rear-entry 2-car garage. The main living level opens to a spacious family room, dining area, and kitchen, which includes a sunroom and deck! The main living level boasts 10-foot ceilings and hardwood flooring. The terrace level features a fantastic guest retreat with a full bathroom, a walk-in shower, and three storage closets. The primary and secondary bedrooms are on the 3rd floor, each with an en suite full bathroom. Each home includes a stackable, elevator-ready storage closet on every floor. The homes are Energy Star Certified; they are built to a higher standard and adhere to strict energy-efficiency guidelines, delivering superior performance, quality, and lower utility bills. Ward's Crossing, developed by The Providence Group, is situated in the highly regarded Johns Creek community, renowned for its excellent schools, recreational amenities, shopping, dining, and vibrant cultural scene. Ward's Crossing is a gated community with a pool, and your low HOA fees cover ...

**Want to Know More
About This Home?**

CONTACT OUR COMMUNITY SALES MANAGER
Call Us @ 770.521.2151



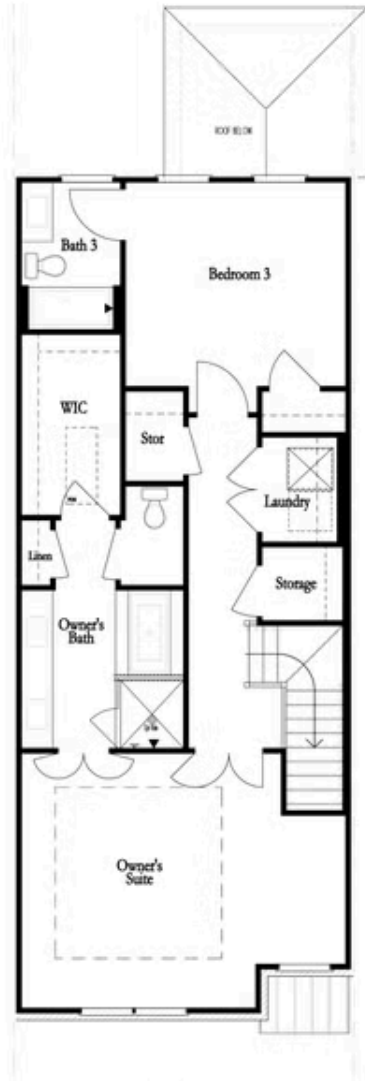
FIRST FLOOR



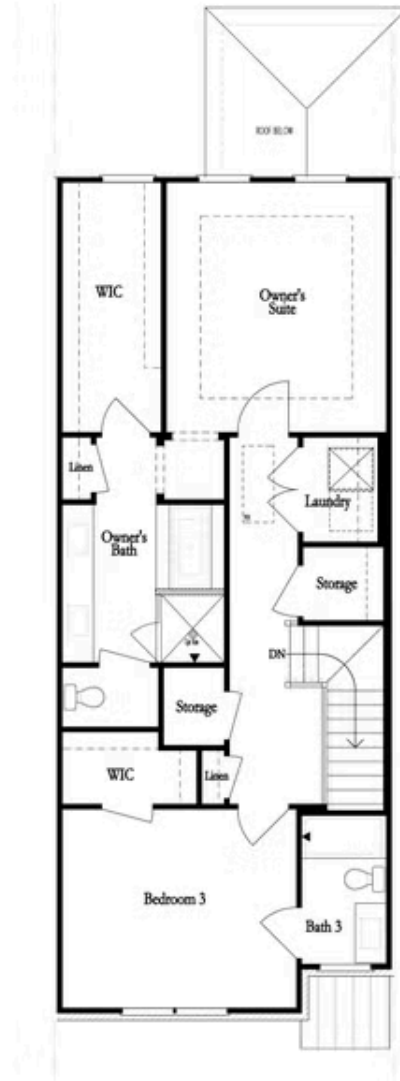
SECOND FLOOR

Want to Know More
About This Home?

CONTACT OUR COMMUNITY SALES MANAGER
Call Us @ 770.521.2151



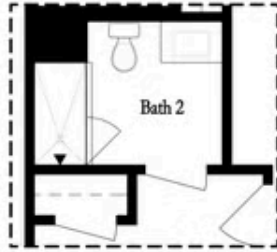
THIRD FLOOR
 OWNER'S FRONT



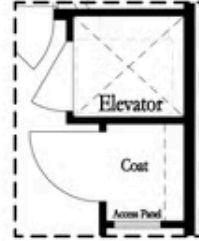
THIRD FLOOR
 OWNER'S REAR

Want to Know More
 About This Home?

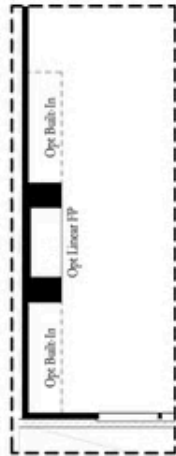
CONTACT OUR COMMUNITY SALES MANAGER
 Call Us @ 770.521.2151



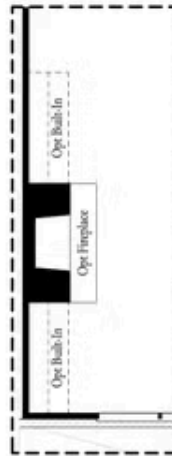
*Opt. Shower
 on First Floor Bath*



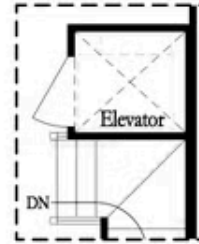
*Opt. Elevator
 on First Floor*



Opt. Linear Fireplace



Opt. Fireplace

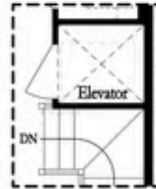


*Opt. Elevator
 on Second Floor*

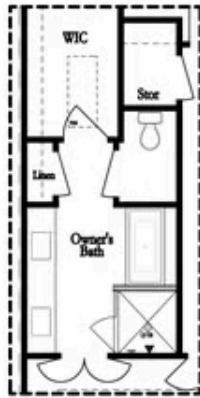
OPTIONS

**Want to Know More
 About This Home?**

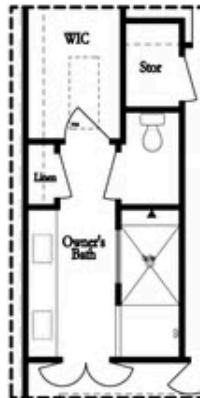
CONTACT OUR COMMUNITY SALES MANAGER
 Call Us @ 770.521.2151



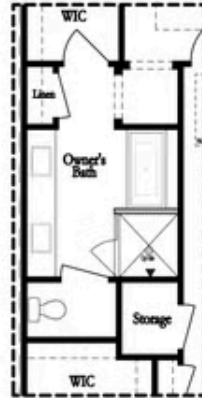
Opt. Elevator
 on Third Floor



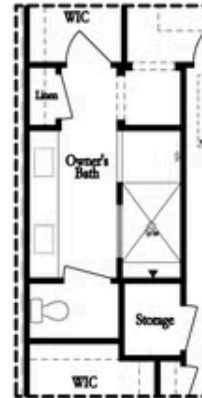
Opt. Free Standing
 Tub w/ Shower



Opt. Walk-Through Shower



Opt. Free Standing
 Tub w/ Shower



Opt. Walk-Through Shower

OWNER'S SUITE FRONT

OWNER'S SUITE REAR

OPTIONS

Want to Know More
 About This Home?

CONTACT OUR COMMUNITY SALES MANAGER
 Call Us @ 770.521.2151