



PRICED AT
\$742,235

 2516 Sq Ft

 3 Beds

 3.5 Baths

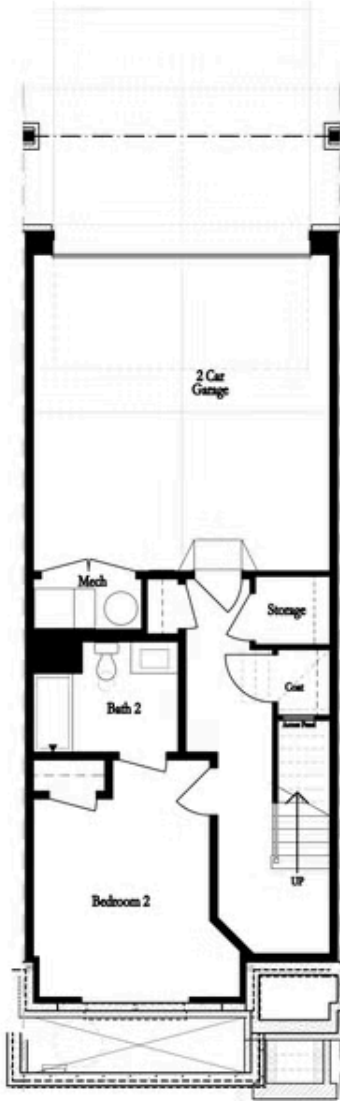
 2 Car Garage

 3.0 Story

Elevate Your Savings! Enjoy a \$35K MOVE IN READY LUXURY PACKAGE! PLUS, an additional \$5K closing costs on homes that close by March 31, 2026. Promotions can be applied toward a price reduction, upgraded appliances, closing costs, Rate Buy-down, and more, giving you the flexibility to save where it matters most. This home is MOVE-IN READY. The Jacobsen II by The Providence Group features 3 bedrooms, 3.3.3.5 bathrooms, and a rear-entry 2-car garage. The main living level opens to a spacious family room, dining area, and kitchen, which includes a sunroom and deck! The main living level boasts 10-foot ceilings and hardwood flooring. The terrace level features a guest retreat with a full bathroom, a walk-in shower, and three storage closets. The primary and secondary bedrooms are on the 3rd floor, each with an en-suite full bathroom. Each home features a stackable, elevator-ready storage closet on every floor. The homes are Energy Star Certified; they are built to a higher standard and adhere to strict energy-efficiency guidelines, delivering superior performance and quality while lowering utility bills. Ward's Crossing, developed by The Providence Group, is situated in the highly regarded Johns Creek community, renowned for ...

**Want to Know More
About This Home?**

CONTACT OUR COMMUNITY SALES MANAGER
Call Us @ 770.521.2151



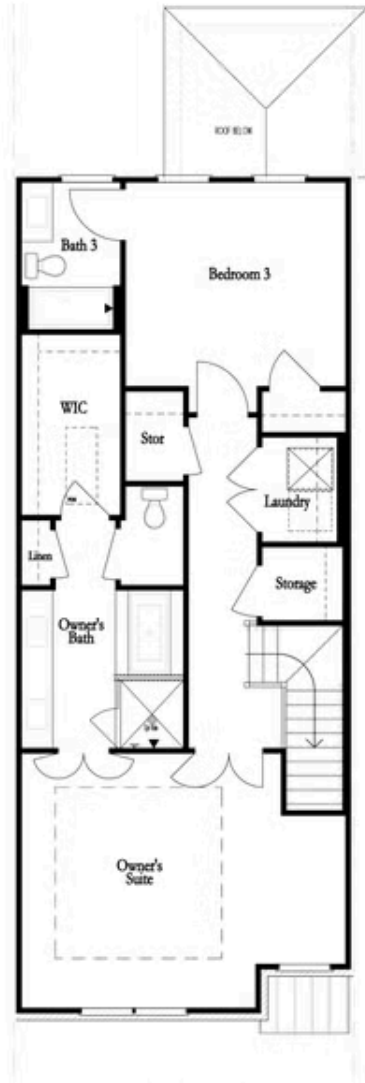
FIRST FLOOR



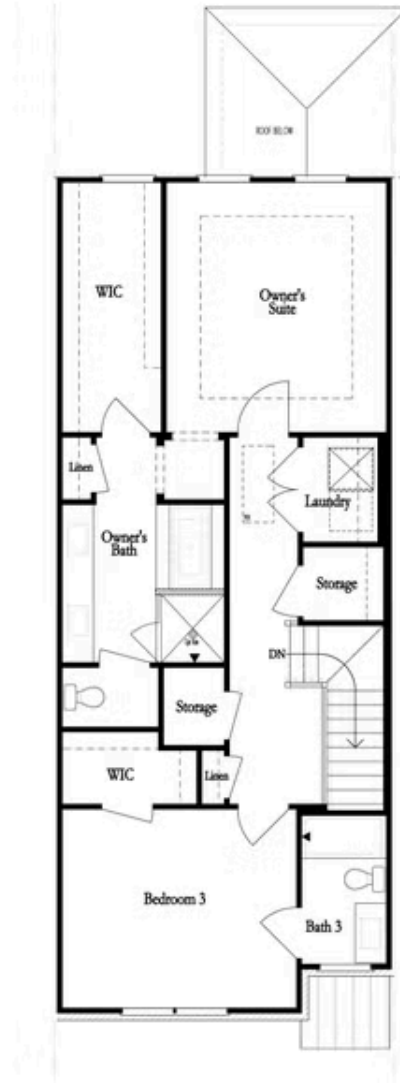
SECOND FLOOR

Want to Know More
About This Home?

CONTACT OUR COMMUNITY SALES MANAGER
Call Us @ 770.521.2151



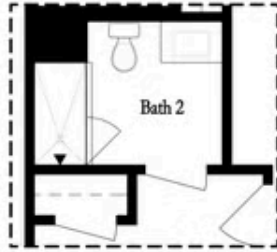
THIRD FLOOR
 OWNER'S FRONT



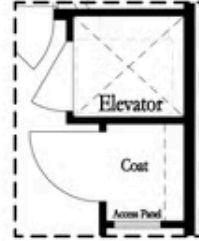
THIRD FLOOR
 OWNER'S REAR

Want to Know More
 About This Home?

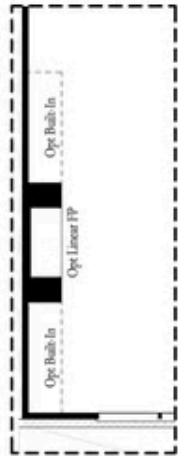
CONTACT OUR COMMUNITY SALES MANAGER
 Call Us @ 770.521.2151



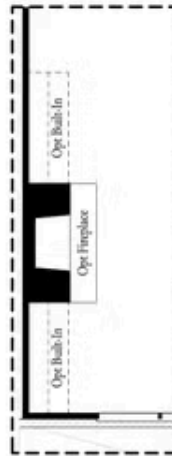
*Opt. Shower
 on First Floor Bath*



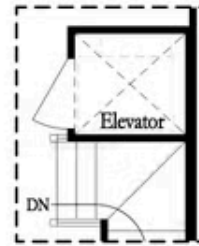
*Opt. Elevator
 on First Floor*



Opt. Linear Fireplace



Opt. Fireplace

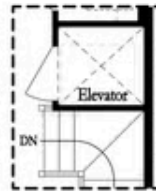


*Opt. Elevator
 on Second Floor*

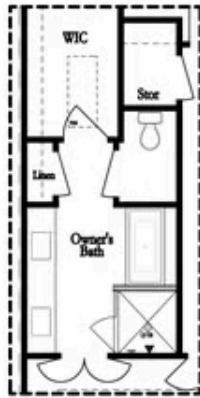
OPTIONS

**Want to Know More
 About This Home?**

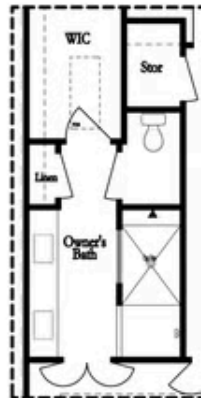
CONTACT OUR COMMUNITY SALES MANAGER
 Call Us @ 770.521.2151



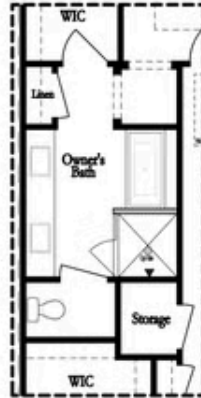
Opt. Elevator
 on Third Floor



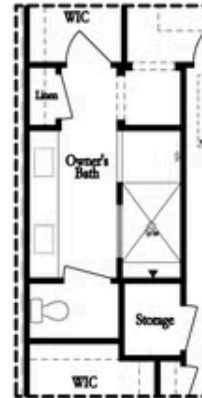
Opt. Free Standing
 Tub w/ Shower



Opt. Walk-Through Shower



Opt. Free Standing
 Tub w/ Shower



Opt. Walk-Through Shower

OWNER'S SUITE FRONT

OWNER'S SUITE REAR

OPTIONS

Want to Know More
 About This Home?

CONTACT OUR COMMUNITY SALES MANAGER
 Call Us @ 770.521.2151