



PRICED AT
\$767,520

 2516 Sq Ft

 3 Beds

 3.5 Baths

 2 Car Garage

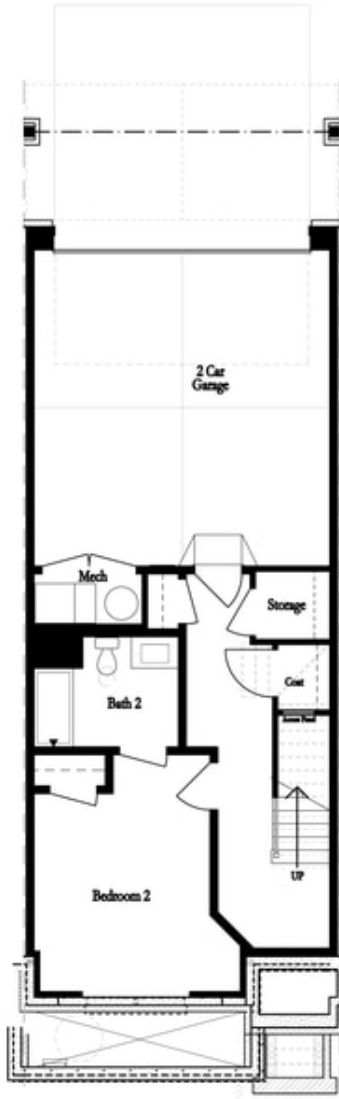
 3.0 Story

FABULOUS FALL SAVINGS!! MOVE-IN READY - END UNIT - NEW INCENTIVE - 10 ANY WAY YOU WANT!

Welcome to Ward's Crossing by The Providence Group, located in the highly regarded Johns Creek community, known for its excellent schools, recreational amenities, shopping, dining, and vibrant cultural scene. The Sales Price Includes all Structural and Design options. Ward's Crossing is a Gated community with a pool and all exterior maintenance and insurance covered by your low HOA fees. The Jacobsen II END UNIT offers 3 bedrooms and 3.5 bathrooms with a rear entry two-car garage. The Front door on the main living level opens to your spacious Family and dining room with 10' ceilings. As you enter the family room, the white brick fireplace will be the focal point. Pass through the dining area to the stunning Kitchen featuring 42" Custom White Cabinetry, a painted Iron island, creamy white Quartz Countertops, a trendy 3x12 tile backsplash with herringbone pattern, a gorgeous black farm sink, matte black & luxe gold faucet, and a GE stainless Steel appliance package. No detail has been left out. The flow through the main living space is easy and functional. Just beyond the kitchen is a sunroom with ...

**Want to Know More
About This Home?**

CONTACT OUR COMMUNITY SALES MANAGER
Call Us @ 770.521.2151



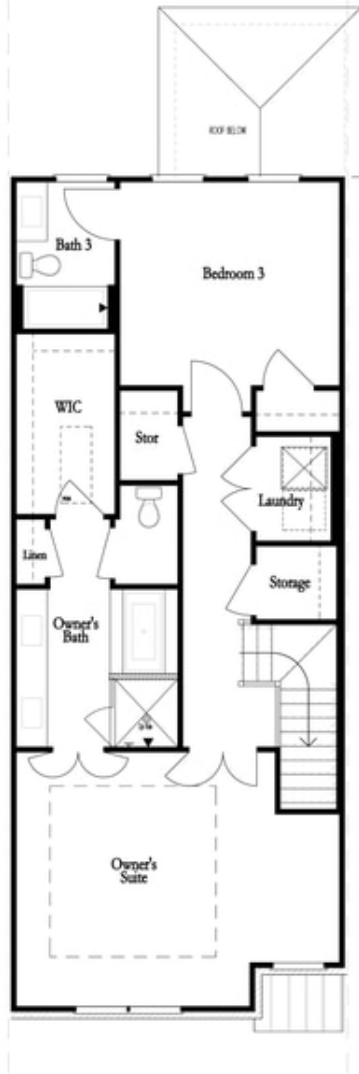
FIRST FLOOR



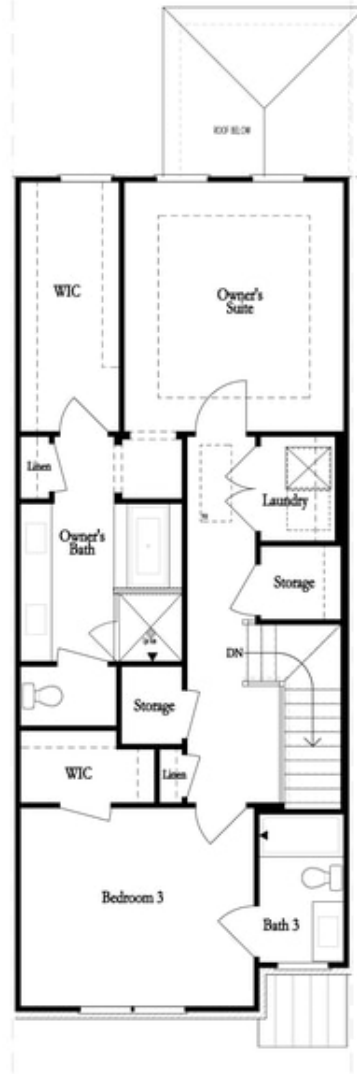
SECOND FLOOR

**Want to Know More
 About This Home?**

CONTACT OUR COMMUNITY SALES MANAGER
 Call Us @ 770.521.2151



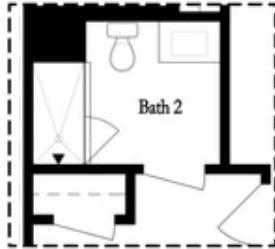
THIRD FLOOR
 OWNER'S FRONT



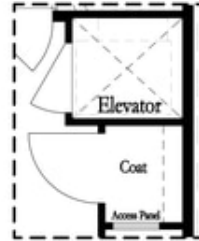
THIRD FLOOR
 OWNER'S REAR

**Want to Know More
 About This Home?**

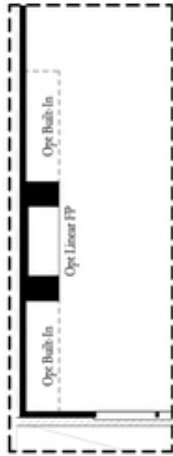
CONTACT OUR COMMUNITY SALES MANAGER
 Call Us @ 770.521.2151



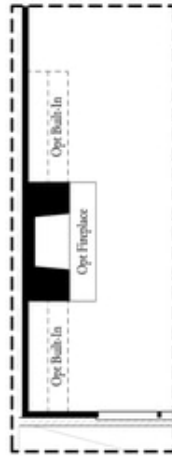
*Opt. Shower
 on First Floor Bath*



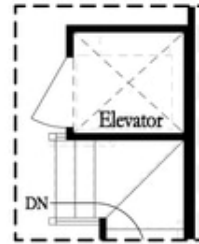
*Opt. Elevator
 on First Floor*



Opt. Linear Fireplace



Opt. Fireplace

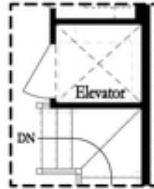


*Opt. Elevator
 on Second Floor*

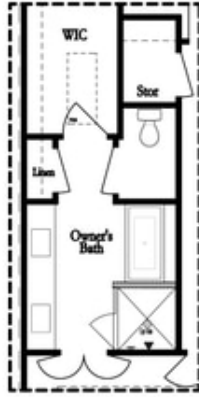
OPTIONS

**Want to Know More
 About This Home?**

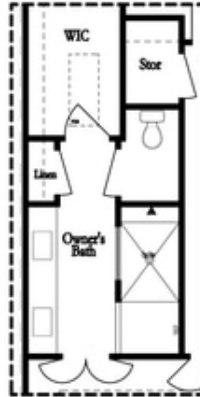
CONTACT OUR COMMUNITY SALES MANAGER
 Call Us @ 770.521.2151



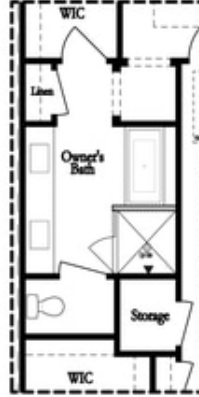
*Opt. Elevator
 on Third Floor*



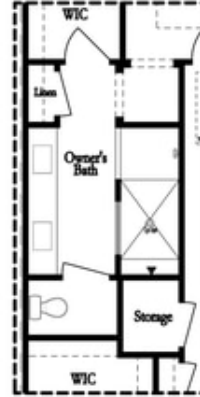
*Opt. Free Standing
 Tub w/ Shower*



Opt. Walk-Through Shower



*Opt. Free Standing
 Tub w/ Shower*



Opt. Walk-Through Shower

OWNER'S SUITE FRONT

OWNER'S SUITE REAR

OPTIONS

**Want to Know More
 About This Home?**

CONTACT OUR COMMUNITY SALES MANAGER
 Call Us @ 770.521.2151