








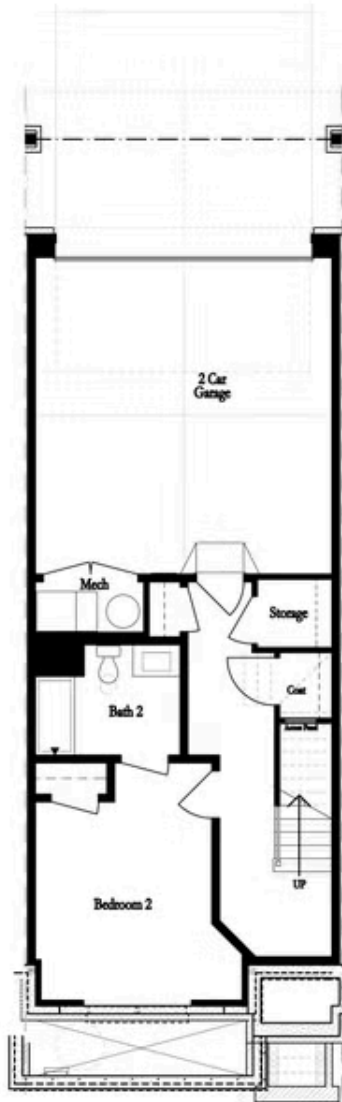
PRICED AT
\$767,925

-  2516 Sq Ft
-  3 Beds
-  3.5 Baths
-  2 Car Garage
-  3.0 Story

Home For The Holidays!! MOVE-IN READY and NEW INCENTIVE -\$20K ANYWAY YOU WANT on contracts written by end of November! Additional \$5k for Closings in November/December 2025! MOVE-IN READY - END UNIT! Welcome to Ward's Crossing by The Providence Group, located in the highly regarded Johns Creek community, known for its excellent schools, recreational amenities, shopping, dining, and vibrant cultural scene. The Sales Price Includes all Structural and Design options. Ward's Crossing is a Gated community with a pool and all exterior maintenance and insurance covered by your low HOA fees. The Jacobsen II END UNIT offers 3 bedrooms and 3.5 bathrooms with a rear entry two-car garage. The Front door on the main living level opens to your spacious Family and dining room with 10' ceilings. As you enter the family room, the white brick fireplace will be the focal point. Pass through the dining area to the stunning Kitchen featuring 42" Custom White Cabinetry, a painted Iron island, creamy white Quartz Countertops, a trendy 3x12 tile backsplash with herringbone pattern, a gorgeous black farm sink, matte black & luxe gold faucet, and a GE stainless Steel appliance package. No detail has been left out. The flow through the ...

**Want to Know More
About This Home?**

CONTACT OUR COMMUNITY SALES MANAGER
Call Us @ 770.521.2151



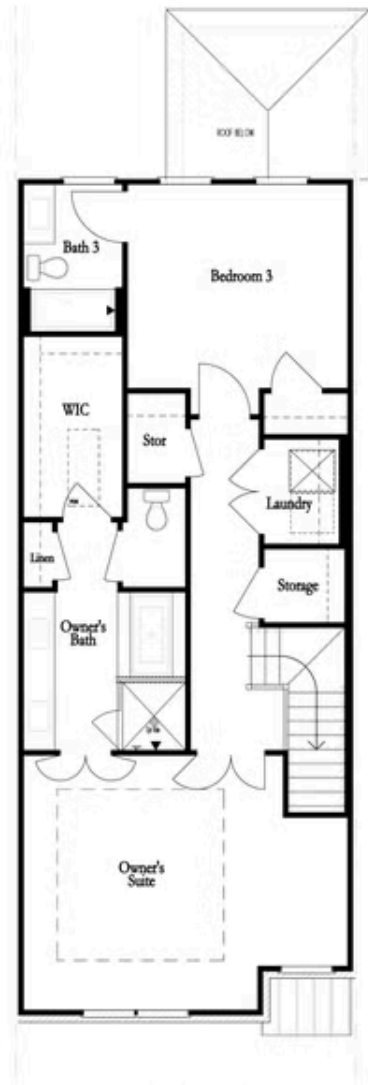
FIRST FLOOR



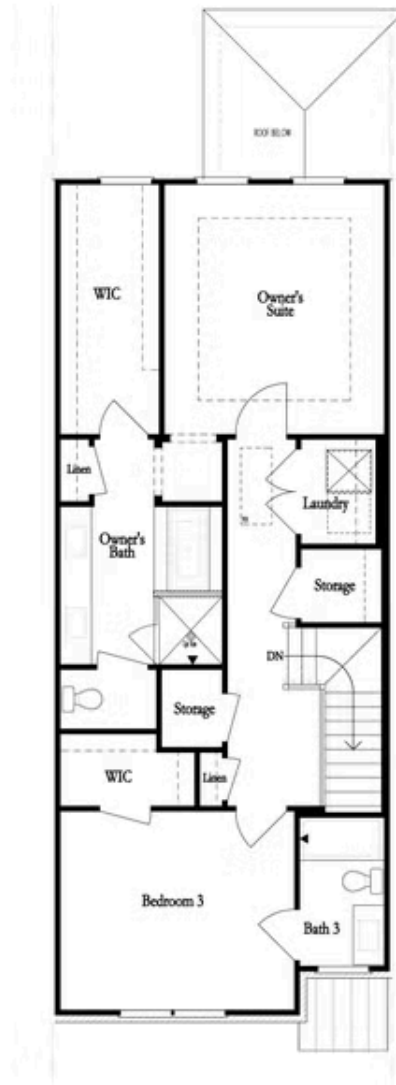
SECOND FLOOR

Want to Know More
About This Home?

CONTACT OUR COMMUNITY SALES MANAGER
Call Us @ 770.521.2151



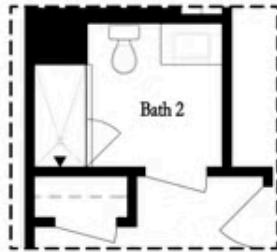
THIRD FLOOR
OWNER'S FRONT



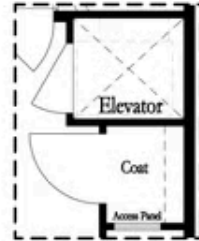
THIRD FLOOR
OWNER'S REAR

Want to Know More
About This Home?

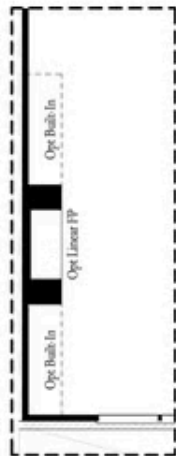
CONTACT OUR COMMUNITY SALES MANAGER
Call Us @ 770.521.2151



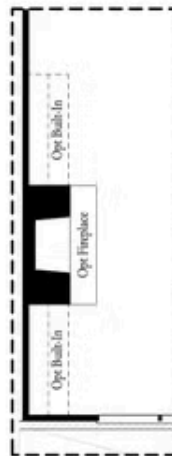
*Opt. Shower
on First Floor Bath*



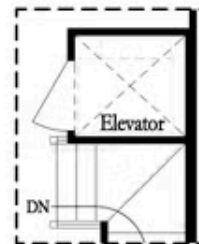
*Opt. Elevator
on First Floor*



Opt. Linear Fireplace



Opt. Fireplace

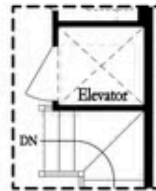


*Opt. Elevator
on Second Floor*

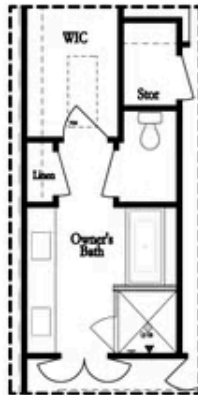
OPTIONS

**Want to Know More
About This Home?**

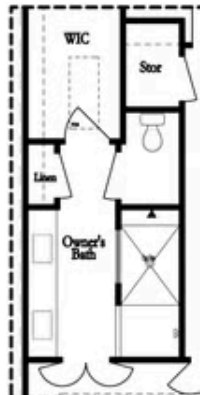
CONTACT OUR COMMUNITY SALES MANAGER
Call Us @ 770.521.2151



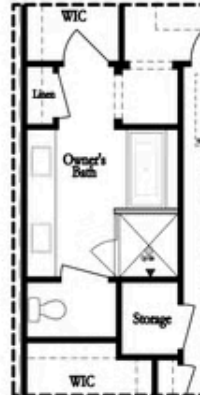
Opt. Elevator
on Third Floor



Opt. Free Standing
Tub w/ Shower



Opt. Walk-Through Shower



Opt. Free Standing
Tub w/ Shower



Opt. Walk-Through Shower

OWNER'S SUITE FRONT

OWNER'S SUITE REAR

OPTIONS

Want to Know More
About This Home?

CONTACT OUR COMMUNITY SALES MANAGER
Call Us @ 770.521.2151