



PRICED AT
\$727,390

 **2516 Sq Ft**

 **3 Beds**

 **3.5 Baths**

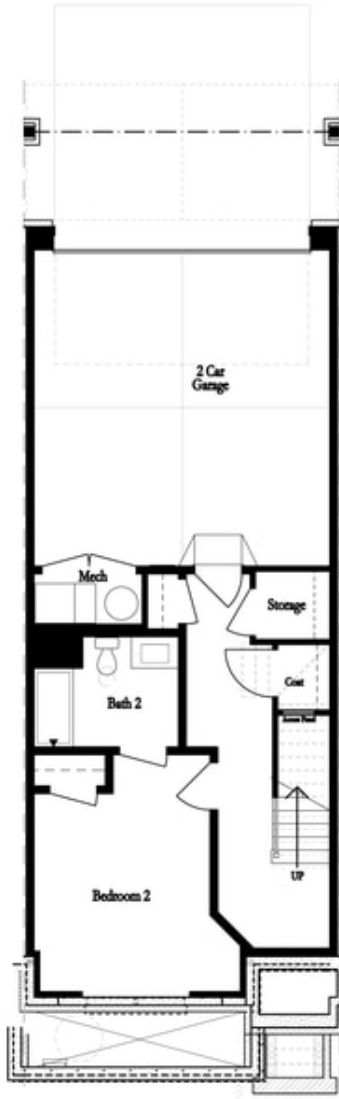
 **2 Car Garage**

 **3.0 Story**

MOVE-IN READY! The Jacobsen II offers 3 bedrooms and 3.5 bathrooms with a rear entry 2 car garage. Entry on the main living level opens to your spacious Family and dining room with 10' ceilings & Hard Surface flooring that flows throughout the home. The kitchen has a clean and classic feel with white 42" Custom White Cabinets, a Riverstone Slate painted island, Quartz Countertops, a tile backsplash, and a GE stainless Steel appliance package. The family room has a cozy linear fireplace with 6x24 stacked quartzite and a box beam mantel. Just off the kitchen is a sunroom with access to the covered deck. Head to the upper floor for the primary suite, which offers a large walk-in closet and a stunning bathroom with dual vanity, marble countertops, and a separate tub & frameless tile shower. The 3rd bedroom on the terrace level has its own en-suite and a full bathroom with a frameless walk-in shower, making this the perfect spot for guests. Ward's Crossing by The Providence Group is located in the highly regarded Johns Creek community, known for its excellent schools, recreational amenities, shopping, dining, and vibrant cultural scene. The Sales Price Includes all Structural and Design ...

**Want to Know More
About This Home?**

CONTACT OUR COMMUNITY SALES MANAGER
Call Us @ 770.521.2151



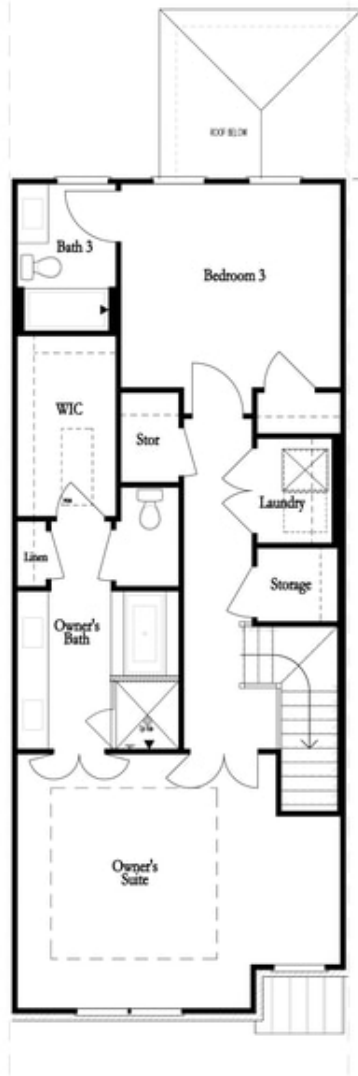
FIRST FLOOR



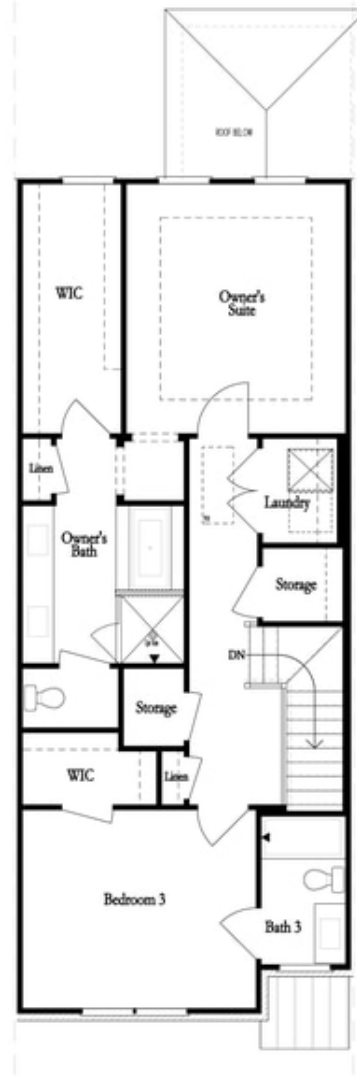
SECOND FLOOR

**Want to Know More
 About This Home?**

CONTACT OUR COMMUNITY SALES MANAGER
Call Us @ 770.521.2151



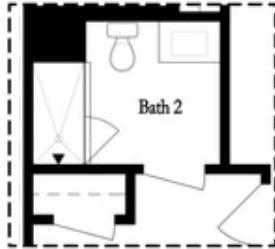
THIRD FLOOR
 OWNER'S FRONT



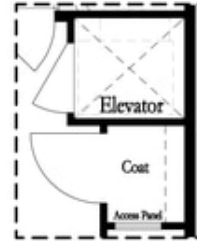
THIRD FLOOR
 OWNER'S REAR

**Want to Know More
 About This Home?**

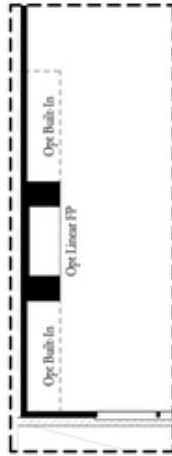
CONTACT OUR COMMUNITY SALES MANAGER
Call Us @ 770.521.2151



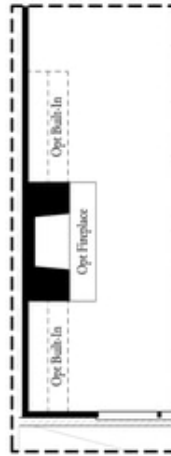
Opt. Shower
on First Floor Bath



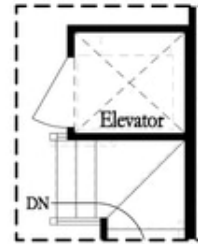
Opt. Elevator
on First Floor



Opt. Linear Fireplace



Opt. Fireplace

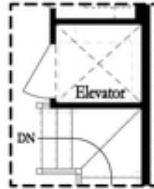


Opt. Elevator
on Second Floor

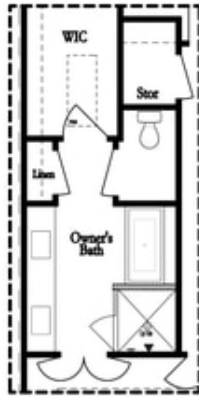
OPTIONS

Want to Know More
About This Home?

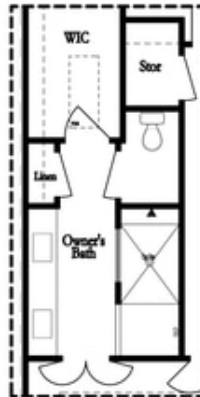
CONTACT OUR COMMUNITY SALES MANAGER
Call Us @ 770.521.2151



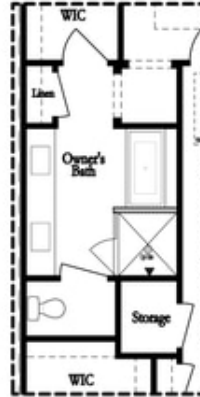
*Opt. Elevator
 on Third Floor*



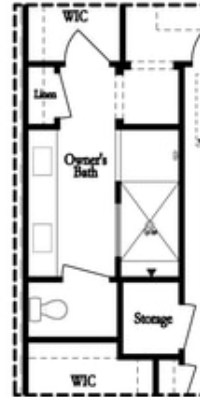
*Opt. Free Standing
 Tub w/ Shower*



Opt. Walk-Through Shower



*Opt. Free Standing
 Tub w/ Shower*



Opt. Walk-Through Shower

OWNER'S SUITE FRONT

OWNER'S SUITE REAR

OPTIONS

**Want to Know More
 About This Home?**

CONTACT OUR COMMUNITY SALES MANAGER
Call Us @ 770.521.2151