



PRICED AT  
**\$727,710**

 **2516 Sq Ft**

 **3 Beds**

 **3.5 Baths**

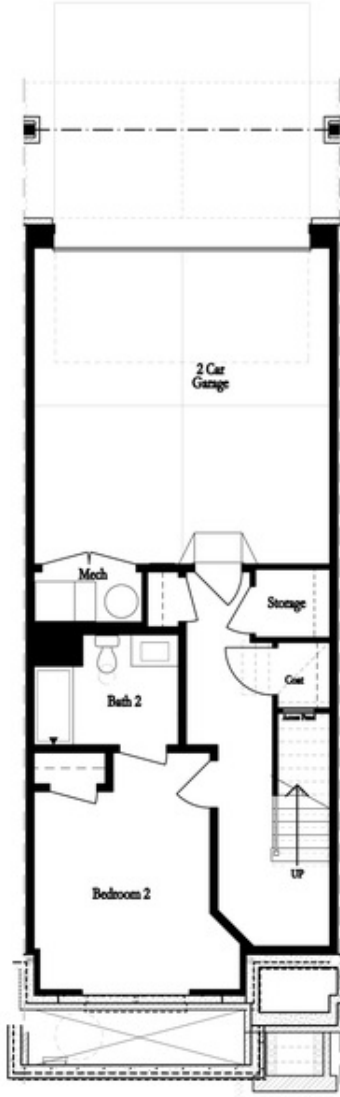
 **2 Car Garage**

 **3.0 Story**

**Home For The Holidays! The Jacobsen II offers 3 bedrooms and 3.5 bathrooms with a rear entry 2 car garage. Entry on the main living level opens to your spacious Family and dining room with 10' ceilings & Hard Surface flooring that flows throughout the home. The kitchen has a clean and classic feel with white 42" Custom White Cabinets, a Riverstone Slate painted island, Quartz Countertops, a tile backsplash, and a GE stainless Steel appliance package. The family room has a cozy linear fireplace with 6x24 stacked quartzite and a box beam mantel. Just off the kitchen is a sunroom with access to the covered deck. Head to the upper floor for the primary suite, which offers a large walk-in closet and a stunning bathroom with dual vanity, marble countertops, and a separate tub & frameless tile shower. The 3rd bedroom on the terrace level has its own en-suite and a full bathroom with a frameless walk-in shower, making this the perfect spot for guests. Ward's Crossing by The Providence Group is in the highly regarded Johns Creek community, known for its excellent schools, recreational amenities, shopping, dining, and vibrant cultural scene. The Sales Price Includes all Structural and ...**

**Want to Know More  
About This Home?**

**CONTACT OUR COMMUNITY SALES MANAGER**  
**Call Us @ 770.521.2151**



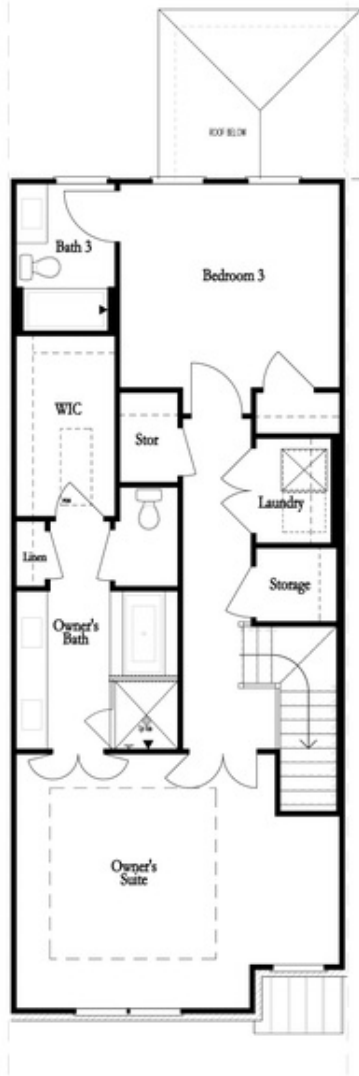
FIRST FLOOR



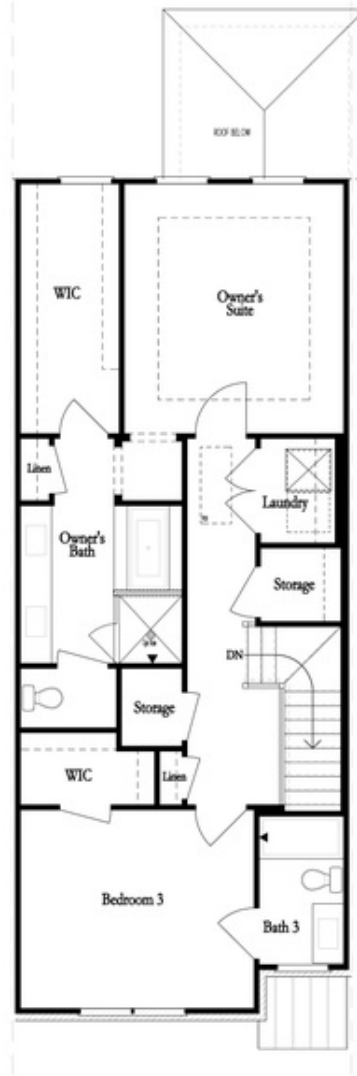
SECOND FLOOR

Want to Know More  
 About This Home?

CONTACT OUR COMMUNITY SALES MANAGER  
 Call Us @ 770.521.2151



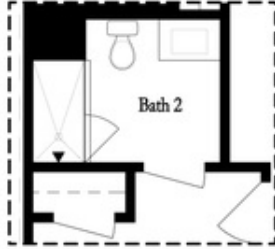
THIRD FLOOR  
 OWNER'S FRONT



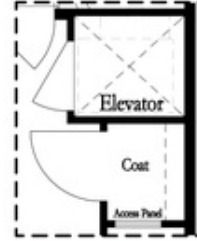
THIRD FLOOR  
 OWNER'S REAR

Want to Know More  
 About This Home?

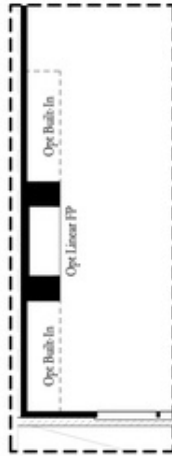
CONTACT OUR COMMUNITY SALES MANAGER  
 Call Us @ 770.521.2151



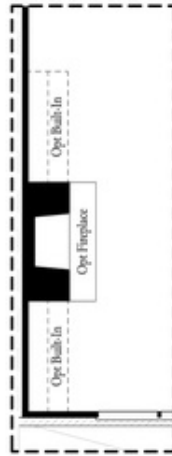
*Opt. Shower  
 on First Floor Bath*



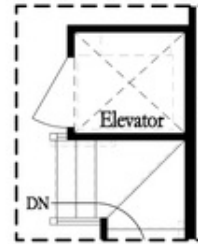
*Opt. Elevator  
 on First Floor*



*Opt. Linear Fireplace*



*Opt. Fireplace*

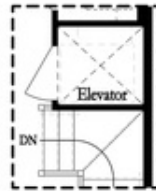


*Opt. Elevator  
 on Second Floor*

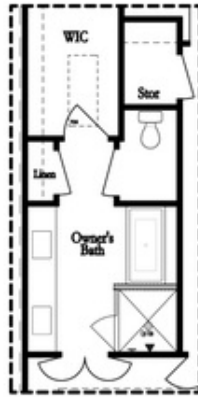
OPTIONS

**Want to Know More  
 About This Home?**

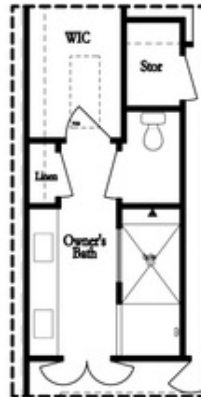
**CONTACT OUR COMMUNITY SALES MANAGER**  
**Call Us @ 770.521.2151**



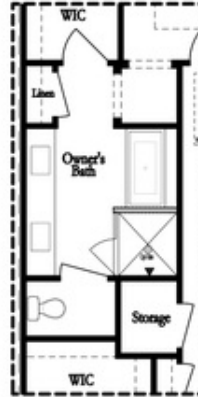
*Opt. Elevator  
 on Third Floor*



*Opt. Free Standing  
 Tub w/ Shower*



*Opt. Walk-Through Shower*



*Opt. Free Standing  
 Tub w/ Shower*



*Opt. Walk-Through Shower*

OWNER'S SUITE FRONT

OWNER'S SUITE REAR

OPTIONS

**Want to Know More  
 About This Home?**

**CONTACT OUR COMMUNITY SALES MANAGER**  
**Call Us @ 770.521.2151**