



PRICED AT
\$742,310

 2516 Sq Ft

 3 Beds

 3.5 Baths

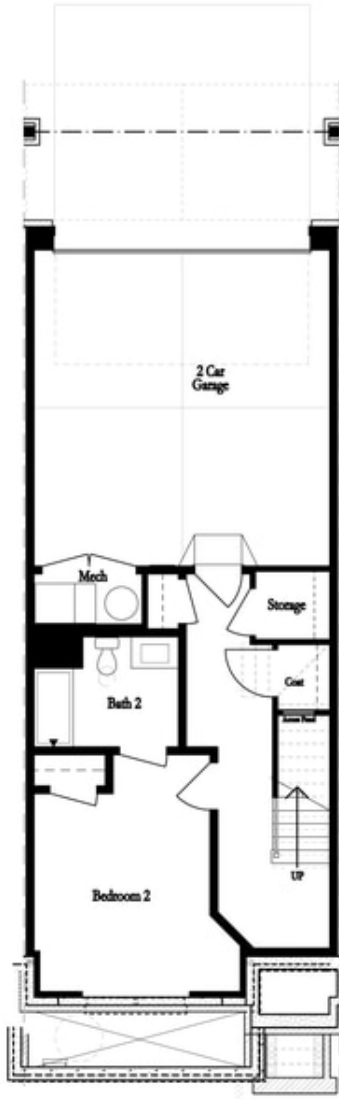
 2 Car Garage

 3.0 Story

MOVE-IN READY and NEW INCENTIVE -10K ANYWAY YOU WANT! The Jacobsen II offers 3 bedrooms and 3.5 bathrooms with a rear entry 2 car garage. Entry on the main living level opens to your spacious Family room featuring 10' ceilings, Upgraded Engineered warm & light colored Sunkissed Hardwood flooring that flows throughout the home, including the primary bedroom! The kitchen has a clean and classic feel with white 42" Custom classic monochromatic Wheat-colored Cabinets throughout the house! Upgraded GE Energy Star Appliances, including a Built-in combination convection Micro/convection wall Oven, 36" 5 Burner Gas Cooktop, and mounted Chimney vent hood (that vents outside). The upgraded Colton Quartz Countertops offer a timeless allure with feathers of brownish gray on a creamy background. The center island features the Whitehaven Farm sink. The kitchen tile backsplash is a classic glossy acrylic white with brick-lay installations. The entire home has been upgraded with the Delta Trinsic Champagne Bronze plumbing fixtures! The Black and Gold Light fixtures go perfectly with the brass cabinet hardware and the black interior door hardware. The family room has a modern linear fireplace with a full surround and a box beam mantel. Just off the kitchen is a sunroom with ...

**Want to Know More
About This Home?**

CONTACT OUR COMMUNITY SALES MANAGER
Call Us @ 770.521.2151



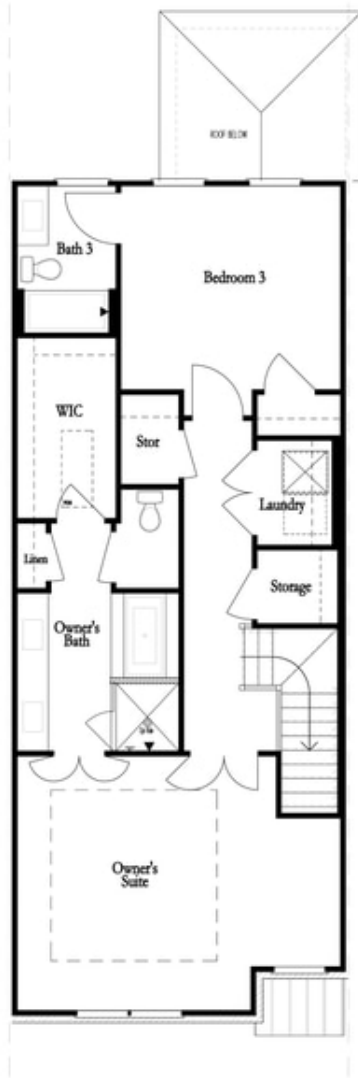
FIRST FLOOR



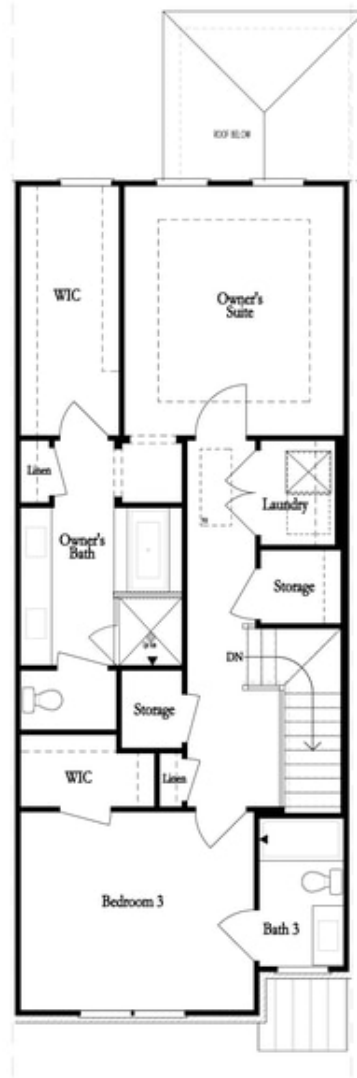
SECOND FLOOR

**Want to Know More
About This Home?**

CONTACT OUR COMMUNITY SALES MANAGER
Call Us @ 770.521.2151



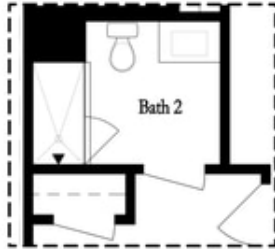
THIRD FLOOR
 OWNER'S FRONT



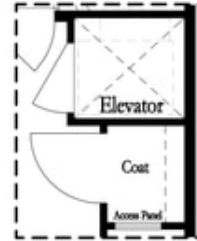
THIRD FLOOR
 OWNER'S REAR

**Want to Know More
 About This Home?**

CONTACT OUR COMMUNITY SALES MANAGER
 Call Us @ 770.521.2151



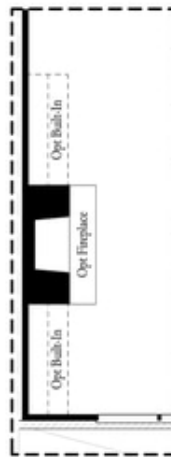
*Opt. Shower
 on First Floor Bath*



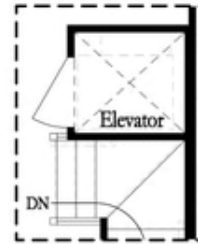
*Opt. Elevator
 on First Floor*



Opt. Linear Fireplace



Opt. Fireplace

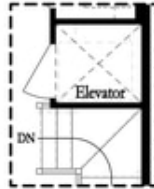


*Opt. Elevator
 on Second Floor*

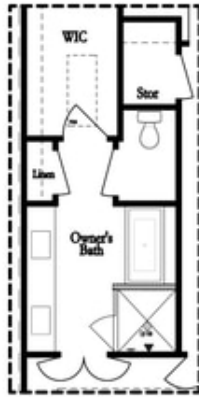
OPTIONS

**Want to Know More
 About This Home?**

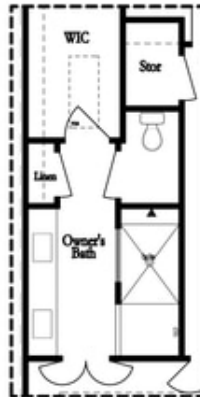
CONTACT OUR COMMUNITY SALES MANAGER
 Call Us @ 770.521.2151



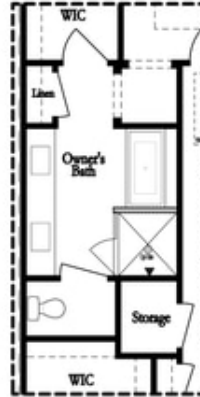
*Opt. Elevator
 on Third Floor*



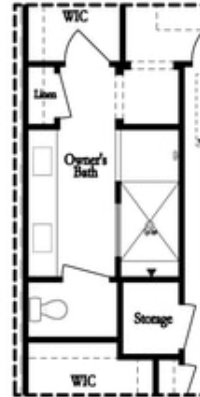
*Opt. Free Standing
 Tub w/ Shower*



Opt. Walk-Through Shower



*Opt. Free Standing
 Tub w/ Shower*



Opt. Walk-Through Shower

OWNER'S SUITE FRONT

OWNER'S SUITE REAR

OPTIONS

**Want to Know More
 About This Home?**

CONTACT OUR COMMUNITY SALES MANAGER
 Call Us @ 770.521.2151