








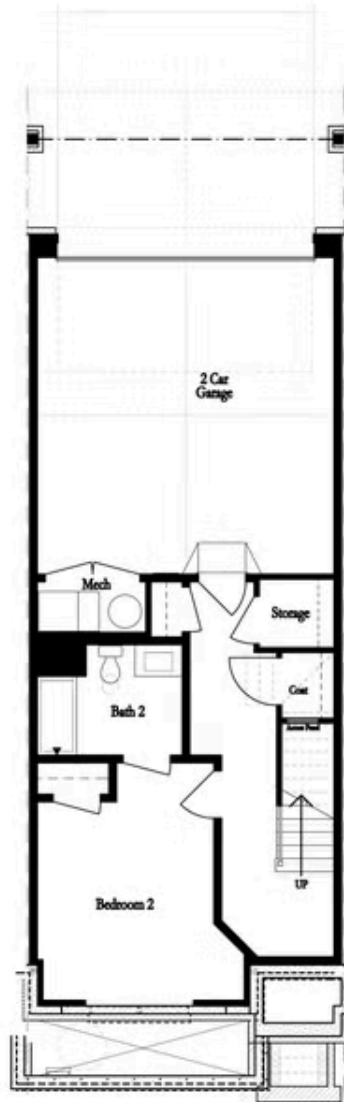
PRICED AT
\$772,325

-  2516 Sq Ft
-  3 Beds
-  3.5 Baths
-  2 Car Garage
-  3.0 Story

Spring Into Your New Home!! MOVE-IN READY - END UNIT JACOBSEN II - \$20,000 Any way you want to use it! Ward's Crossing by The Providence Group, located in the highly regarded Johns Creek community, is known for its excellent schools, recreational amenities, shopping, dining, and vibrant cultural scene. Ward's Crossing is a Gated community with a pool, and your low HOA fees cover all exterior maintenance and insurance. The Jacobsen II end unit offers three bedrooms and 3.5 bathrooms with a rear-entry two-car garage. The Front door on the main living level opens to your spacious Family and dining room with 10' ceilings. The Kitchen next to the Sunroom and Deck features 42" Custom Cabinetry, Quartz Countertops, and a GE stainless Steel appliance package. The first floor offers a guest retreat with an ensuite full bathroom with a walk-in shower. The primary bathroom has a dual vanity, soaking tub, and separate glass-enclosed shower. This is a rare opportunity for new construction townhomes. \$25,000 incentive for May! At TPG, we value the safety of our customers, team members, and vendor team. Our communities are active construction zones and may be unsafe to visit at certain stages of construction. Due to ...

**Want to Know More
About This Home?**

CONTACT OUR COMMUNITY SALES MANAGER
Call Us @ 770.521.2151



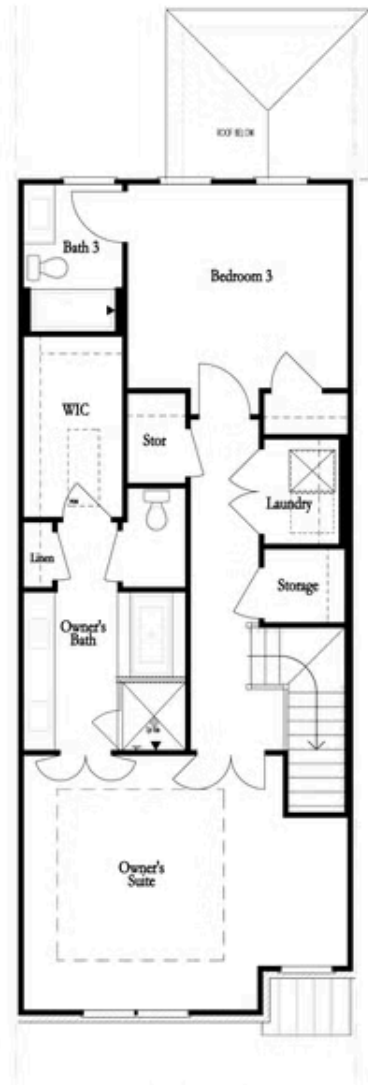
FIRST FLOOR



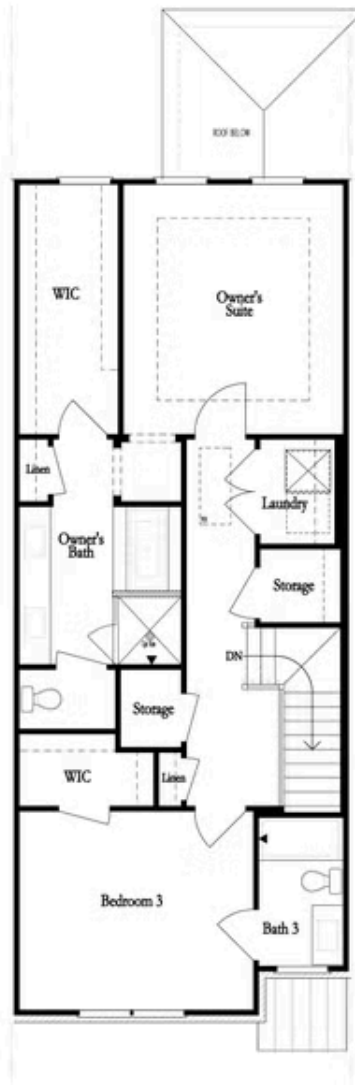
SECOND FLOOR

Want to Know More
About This Home?

CONTACT OUR COMMUNITY SALES MANAGER
Call Us @ 770.521.2151



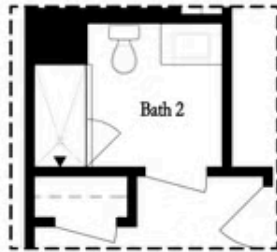
THIRD FLOOR
OWNER'S FRONT



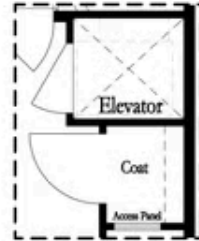
THIRD FLOOR
OWNER'S REAR

Want to Know More
About This Home?

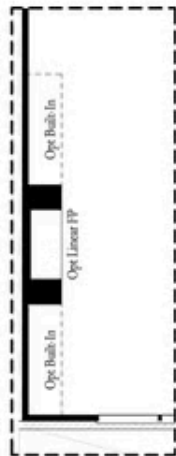
CONTACT OUR COMMUNITY SALES MANAGER
Call Us @ 770.521.2151



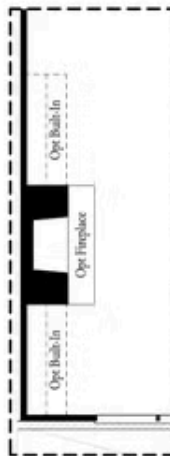
*Opt. Shower
on First Floor Bath*



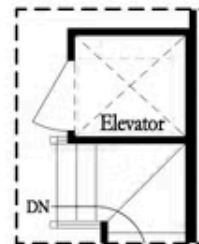
*Opt. Elevator
on First Floor*



Opt. Linear Fireplace



Opt. Fireplace

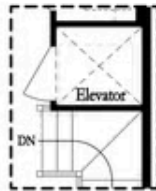


*Opt. Elevator
on Second Floor*

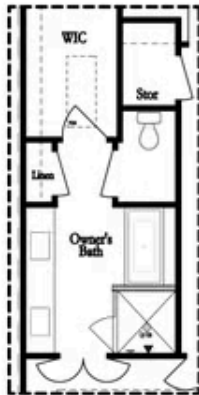
OPTIONS

**Want to Know More
About This Home?**

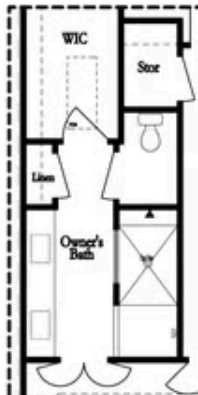
CONTACT OUR COMMUNITY SALES MANAGER
Call Us @ 770.521.2151



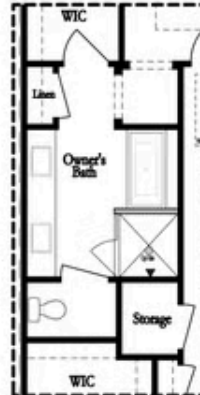
Opt. Elevator
on Third Floor



Opt. Free Standing
Tub w/ Shower



Opt. Walk-Through Shower



Opt. Free Standing
Tub w/ Shower



Opt. Walk-Through Shower

OWNER'S SUITE FRONT

OWNER'S SUITE REAR

OPTIONS

Want to Know More
About This Home?

CONTACT OUR COMMUNITY SALES MANAGER
Call Us @ 770.521.2151