



PRICED AT
\$748,160

 2516 Sq Ft

 3 Beds

 3.5 Baths

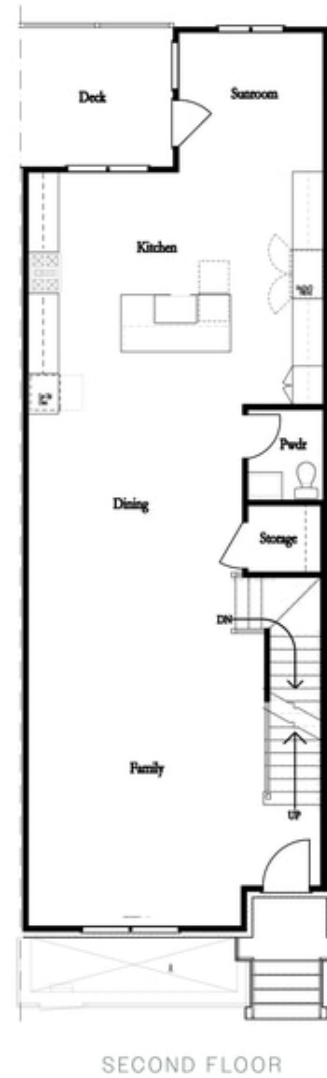
 2 Car Garage

 3.0 Story

The MODEL HOME—JACOBSEN II Plan is NOW FOR SALE, MOVE-IN READY, and offering a NEW INCENTIVE -10K ANYWAY YOU WANT! Ward's Crossing by The Providence Group is a GATED and SWIM community in the heart of JOHNS CREEK. This is a rare opportunity to purchase a MODEL HOME in Ward's Crossing! Not only does this Model Home offer attention to detail and designer touches throughout, but it is also ENERGY STAR CERTIFIED. Tankless water heaters, Energy appliances and Lennox 15- SEER High-Efficiency HVAC systems, Fully Insulated Exterior walls and ceilings, Spray Foam insulation, and weather, and wind-resistant house wrap are only some of the Energy start features we offer at Ward's Crossing! Enter your new home on the Main living level with 10' ceilings and an open floorplan featuring a Family, Dining, kitchen, Sunroom, and private deck on your Main living level! This model home features designer 5" wide plank hardwood flooring. The entrance foyer and staircase up to the 3rd level have been upgraded with extensive grid wall trim and painted Dovetail. The beautiful designer kitchen includes an upgraded Shaker Artic White perimeter custom paint grade cabinetry to the 10' ceiling with an accent slate gray island. Upgraded white ...

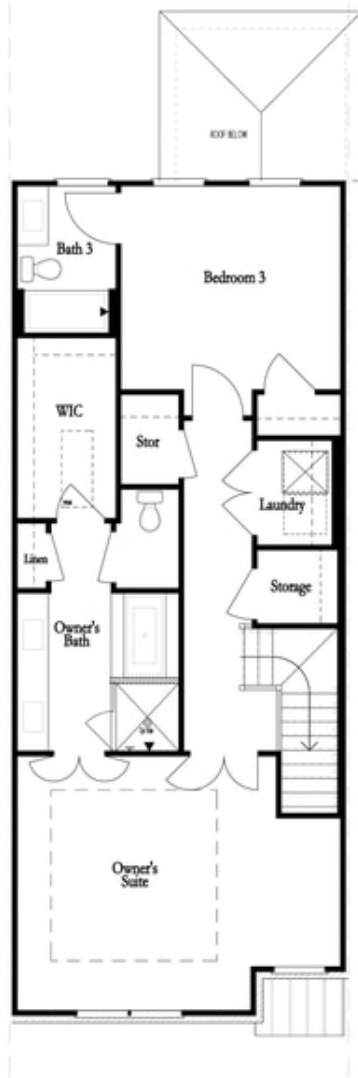
**Want to Know More
About This Home?**

CONTACT OUR COMMUNITY SALES MANAGER
Call Us @ 770.521.2151

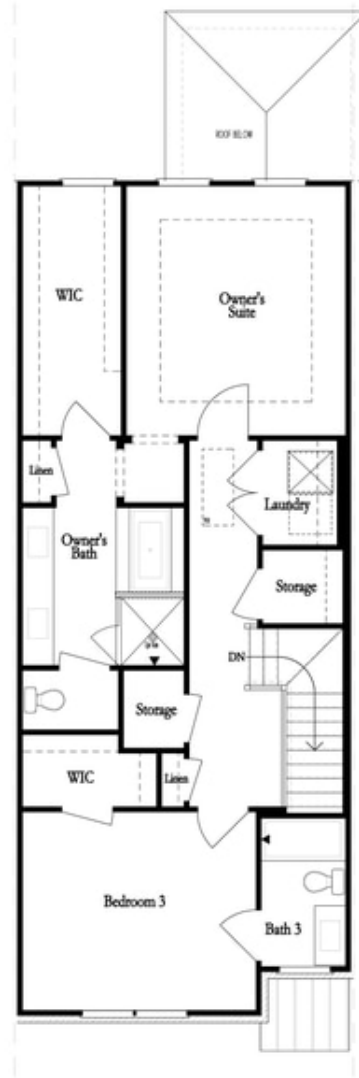


**Want to Know More
About This Home?**

CONTACT OUR COMMUNITY SALES MANAGER
Call Us @ 770.521.2151



THIRD FLOOR
 OWNER'S FRONT



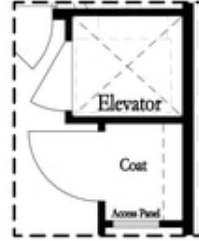
THIRD FLOOR
 OWNER'S REAR

**Want to Know More
 About This Home?**

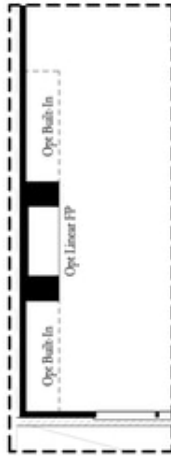
CONTACT OUR COMMUNITY SALES MANAGER
 Call Us @ 770.521.2151



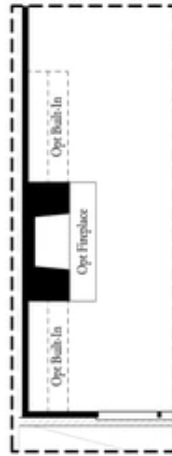
*Opt. Shower
 on First Floor Bath*



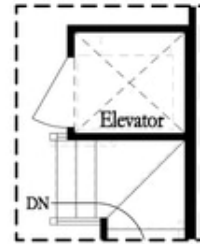
*Opt. Elevator
 on First Floor*



Opt. Linear Fireplace



Opt. Fireplace

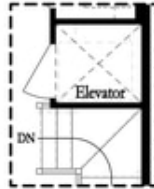


*Opt. Elevator
 on Second Floor*

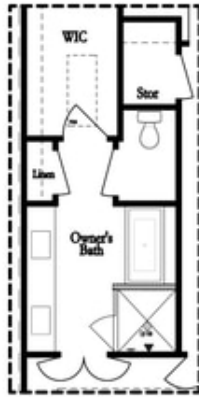
OPTIONS

**Want to Know More
 About This Home?**

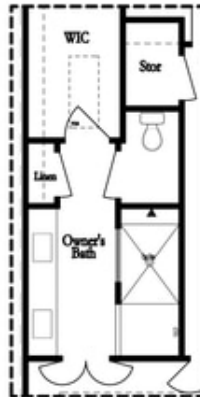
CONTACT OUR COMMUNITY SALES MANAGER
 Call Us @ 770.521.2151



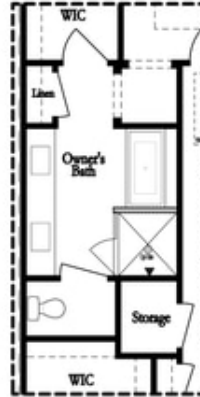
*Opt. Elevator
 on Third Floor*



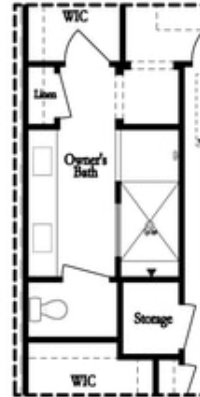
*Opt. Free Standing
 Tub w/ Shower*



Opt. Walk-Through Shower



*Opt. Free Standing
 Tub w/ Shower*



Opt. Walk-Through Shower

OWNER'S SUITE FRONT

OWNER'S SUITE REAR

OPTIONS

**Want to Know More
 About This Home?**

CONTACT OUR COMMUNITY SALES MANAGER
 Call Us @ 770.521.2151