



PRICED AT  
**\$747,795**

 2516 Sq Ft

 3 Beds

 3.5 Baths

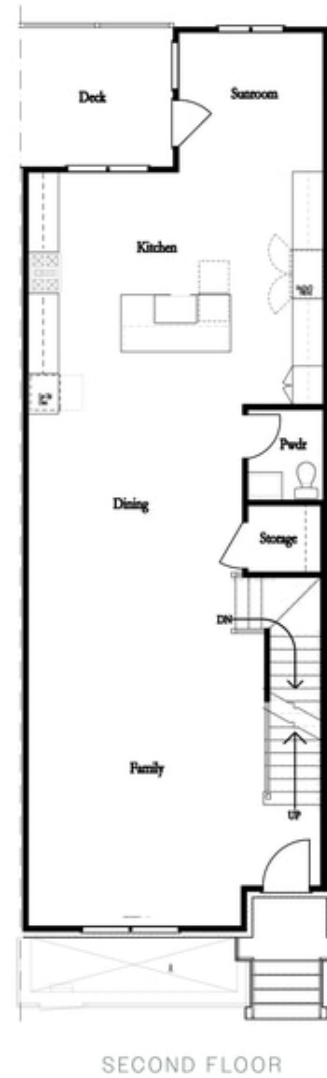
 2 Car Garage

 3.0 Story

The MODEL HOME—JACOBSEN II Plan is NOW FOR SALE. Home For The Holidays!! MOVE-IN READY and NEW INCENTIVE -\$20K ANYWAY YOU WANT on contracts written by end of November! Additional \$5K for closings in November/December 2025. Ward's Crossing by The Providence Group is a GATED and SWIM community in the heart of JOHNS CREEK. This is a rare opportunity to purchase a MODEL HOME in Ward's Crossing! Not only does this Model Home offer attention to detail and designer touches throughout, but it is also ENERGY STAR CERTIFIED. Tankless water heaters, Energy appliances and Lennox 15- SEER High-Efficiency HVAC systems, Fully Insulated Exterior walls and ceilings, Spray Foam insulation, and weather, and wind-resistant house wrap are only some of the Energy start features we offer at Ward's Crossing! Enter your new home on the Main living level with 10' ceilings and an open floorplan featuring a Family, Dining, kitchen, Sunroom, and private deck on your Main living level! This model home features designer 5" wide plank hardwood flooring. The entrance foyer and staircase up to the 3rd level have been upgraded with extensive grid wall trim and painted Dovetail. The beautiful designer kitchen includes an upgraded Shaker Artic White perimeter ...

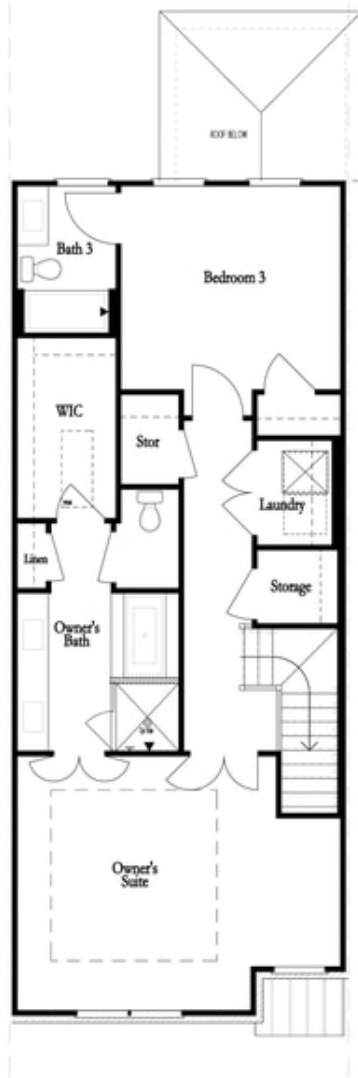
**Want to Know More  
About This Home?**

CONTACT OUR COMMUNITY SALES MANAGER  
Call Us @ 770.521.2151

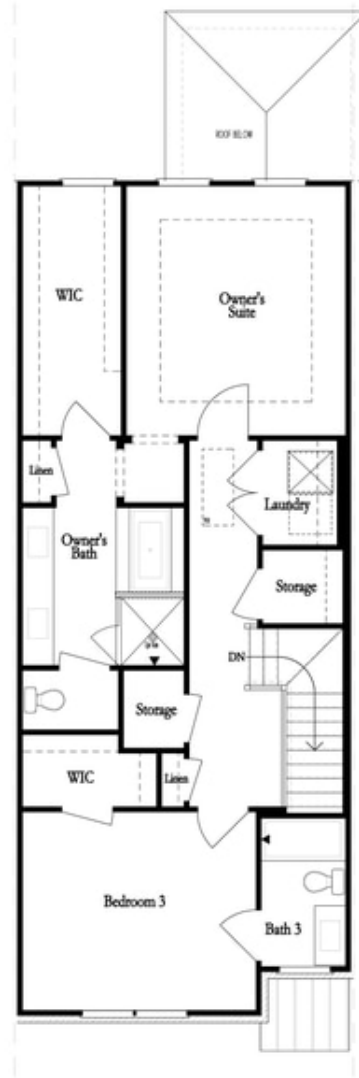


**Want to Know More  
About This Home?**

CONTACT OUR COMMUNITY SALES MANAGER  
Call Us @ 770.521.2151



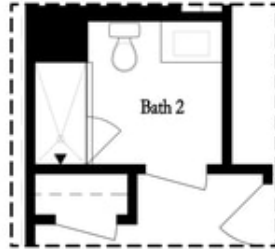
THIRD FLOOR  
 OWNER'S FRONT



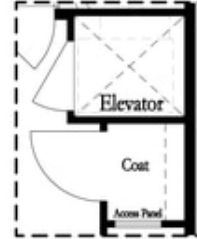
THIRD FLOOR  
 OWNER'S REAR

**Want to Know More  
 About This Home?**

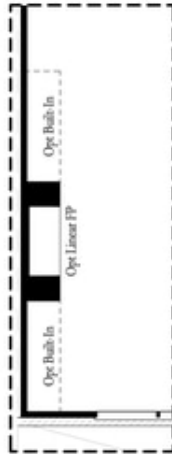
CONTACT OUR COMMUNITY SALES MANAGER  
 Call Us @ 770.521.2151



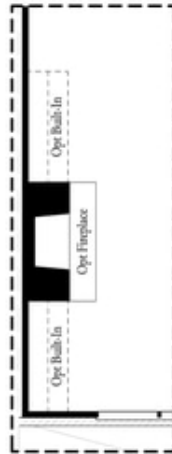
*Opt. Shower  
 on First Floor Bath*



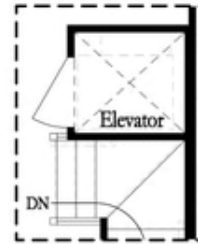
*Opt. Elevator  
 on First Floor*



*Opt. Linear Fireplace*



*Opt. Fireplace*

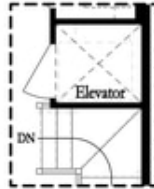


*Opt. Elevator  
 on Second Floor*

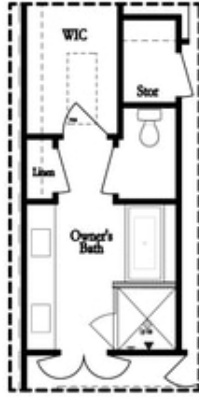
OPTIONS

**Want to Know More  
 About This Home?**

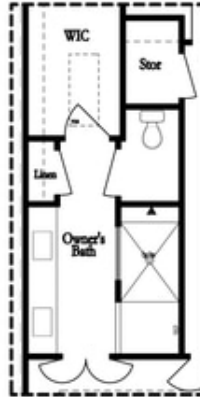
CONTACT OUR COMMUNITY SALES MANAGER  
 Call Us @ 770.521.2151



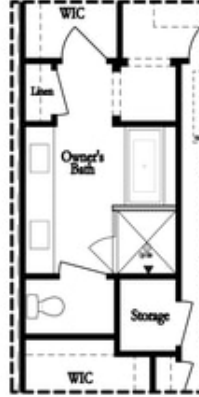
*Opt. Elevator  
 on Third Floor*



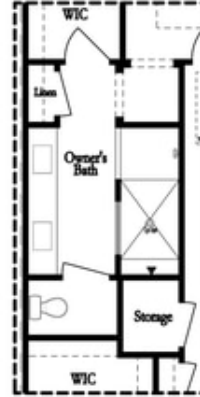
*Opt. Free Standing  
 Tub w/ Shower*



*Opt. Walk-Through Shower*



*Opt. Free Standing  
 Tub w/ Shower*



*Opt. Walk-Through Shower*

OWNER'S SUITE FRONT

OWNER'S SUITE REAR

OPTIONS

**Want to Know More  
 About This Home?**

CONTACT OUR COMMUNITY SALES MANAGER  
 Call Us @ 770.521.2151