



PRICED AT  
**\$732,525**

 2516 Sq Ft

 3 Beds

 3.5 Baths

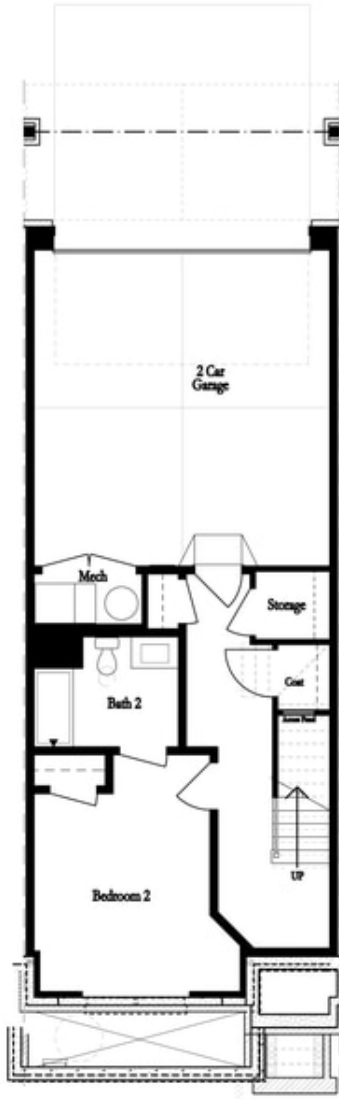
 2 Car Garage

 3.0 Story

**MOVE-IN READY!** Welcome to Ward's Crossing by The Providence Group, located in the highly regarded Johns Creek community, known for its excellent schools, recreational amenities, shopping, dining, and vibrant cultural scene. The Sales Price Includes all Structural and Design options. Ward's Crossing is a Gated community with a pool and all exterior maintenance and insurance covered by your low HOA fees. The Jacobsen II offers 3 bedrooms and 3.5 bathrooms with a rear entry 2 car garage. The Front door on the main living level opens to your spacious Family and dining room with 10' ceilings. The Kitchen next to the Sunroom and Deck features 42" White Custom Cabinetry, a Mineral gray island, Quartz Countertops, a stunning tile with a Herringbone pattern, and a GE stainless Steel appliance package. The terrace level offers a guest retreat with an ensuite full bathroom with a walk-in shower. The primary bedroom has a dual vanity, an upgraded Mega Tile Shower with multiple shower heads, and a generous closet. This is a rare opportunity for new construction townhomes. \$15,000 closing cost incentive with preferred lender! At TPG, we value our customers, team members, and vendor team safety. Our communities are active construction zones and ...

**Want to Know More  
About This Home?**

CONTACT OUR COMMUNITY SALES MANAGER  
Call Us @ 770.521.2151



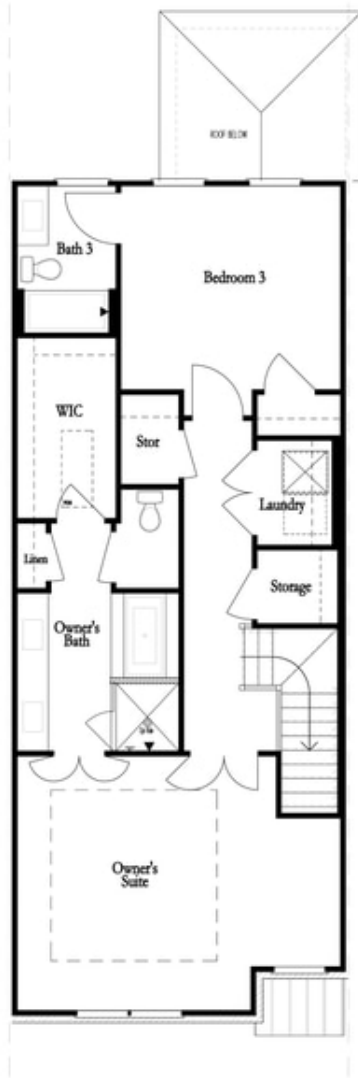
FIRST FLOOR



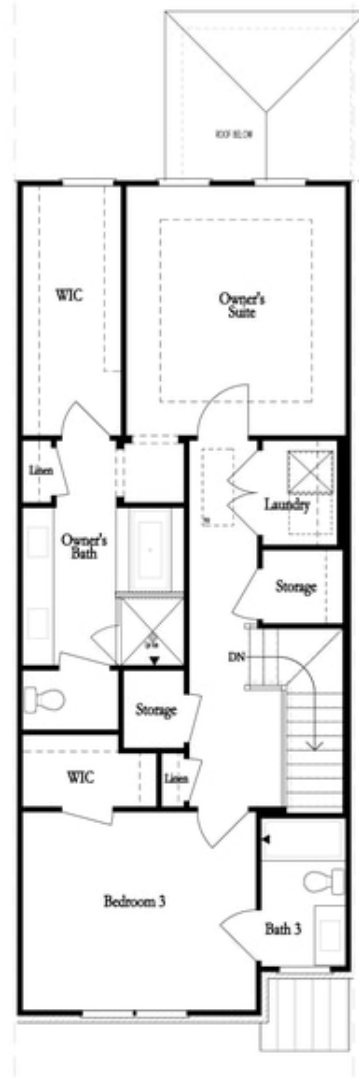
SECOND FLOOR

**Want to Know More  
About This Home?**

CONTACT OUR COMMUNITY SALES MANAGER  
Call Us @ 770.521.2151



THIRD FLOOR  
 OWNER'S FRONT



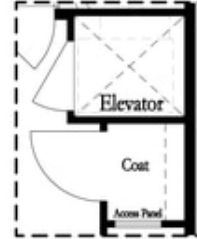
THIRD FLOOR  
 OWNER'S REAR

**Want to Know More  
 About This Home?**

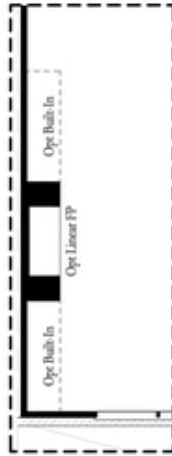
CONTACT OUR COMMUNITY SALES MANAGER  
 Call Us @ 770.521.2151



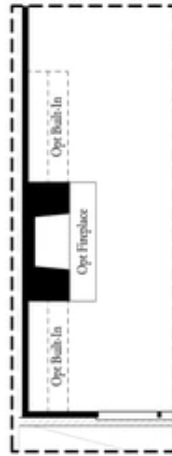
*Opt. Shower  
 on First Floor Bath*



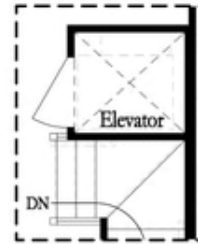
*Opt. Elevator  
 on First Floor*



*Opt. Linear Fireplace*



*Opt. Fireplace*

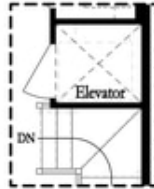


*Opt. Elevator  
 on Second Floor*

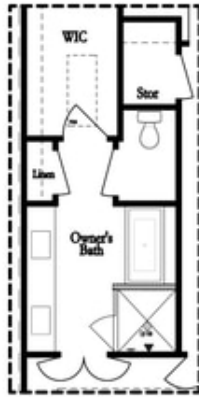
OPTIONS

**Want to Know More  
 About This Home?**

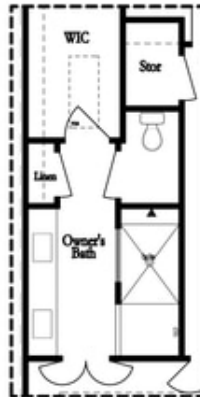
CONTACT OUR COMMUNITY SALES MANAGER  
 Call Us @ 770.521.2151



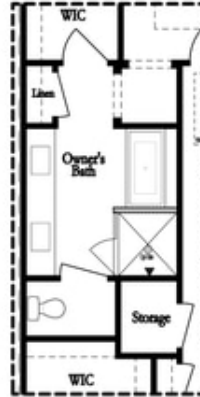
*Opt. Elevator  
 on Third Floor*



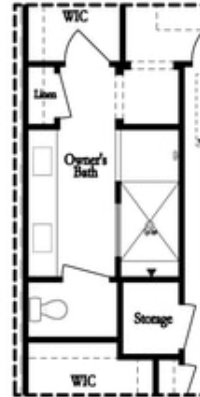
*Opt. Free Standing  
 Tub w/ Shower*



*Opt. Walk-Through Shower*



*Opt. Free Standing  
 Tub w/ Shower*



*Opt. Walk-Through Shower*

OWNER'S SUITE FRONT

OWNER'S SUITE REAR

OPTIONS

**Want to Know More  
 About This Home?**

CONTACT OUR COMMUNITY SALES MANAGER  
 Call Us @ 770.521.2151