



PRICED AT
\$709,900

 2516 Sq Ft

 3 Beds

 3.5 Baths

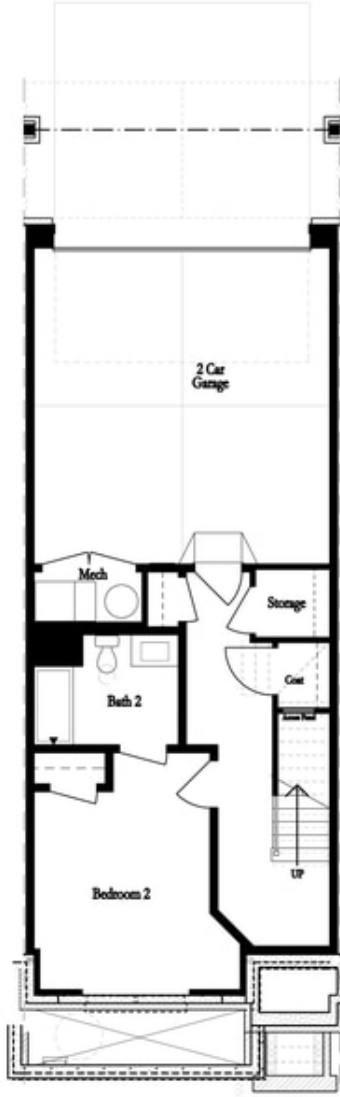
 2 Car Garage

 3.0 Story

FABULOUS FALL SAVINGS!! MOVE IN READY!! The Jacobsen II @ Ward's Crossing in Johns Creek is a beautiful three story townhome offering over 2500 square feet of living space. The plan features a main level entry that walks into the spacious living area highlighting 10 ft. ceilings and a large, open concept, light-filled space. The painted brick gas fireplace brings warmth and ambience to your winters while the huge kitchen with Bell cabinetry stacked to the ceiling, quartz countertops and GE Profile appliances make the cook in home happy. The sunroom also works perfectly as a breakfast area which opens up onto a beautiful outdoor deck. A powder room is also conveniently located on this level. Upstairs you will find a gorgeous primary bedroom and bathroom with the most beautiful oversized walk in shower featuring soft gray and white tile mosaic details. The secondary bedroom also has it's own bath. This floor also conveniently hosts several closets for linens and the laundry. Downstairs you will find the third bedroom This home is pre-wired for an elevator should you ever want to add in the future for convenience. Energy Star certified and built with the highest quality materials, you should save ...

**Want to Know More
About This Home?**

CONTACT OUR COMMUNITY SALES MANAGER
Call Us @ 770.521.2151



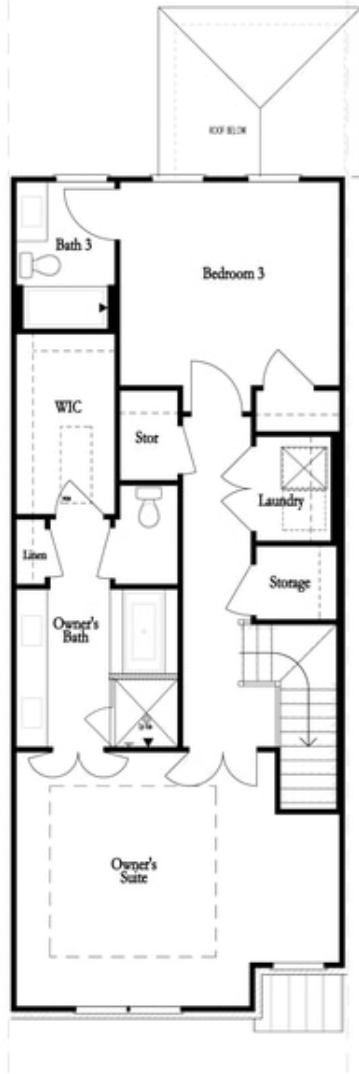
FIRST FLOOR



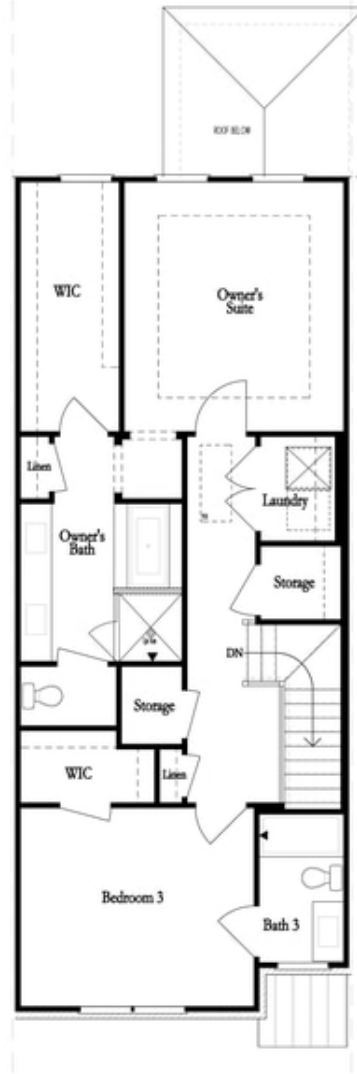
SECOND FLOOR

**Want to Know More
About This Home?**

CONTACT OUR COMMUNITY SALES MANAGER
Call Us @ 770.521.2151



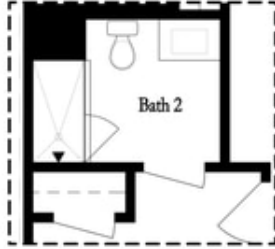
THIRD FLOOR
 OWNER'S FRONT



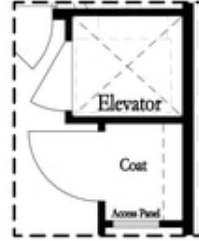
THIRD FLOOR
 OWNER'S REAR

**Want to Know More
 About This Home?**

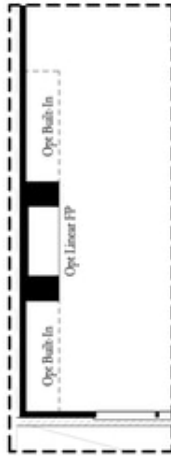
CONTACT OUR COMMUNITY SALES MANAGER
 Call Us @ 770.521.2151



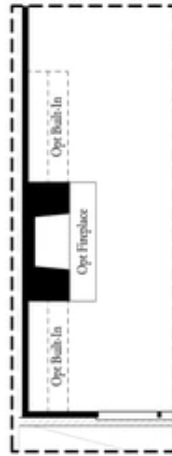
*Opt. Shower
 on First Floor Bath*



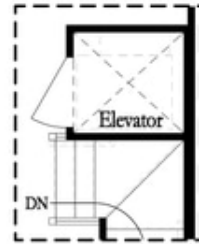
*Opt. Elevator
 on First Floor*



Opt. Linear Fireplace



Opt. Fireplace

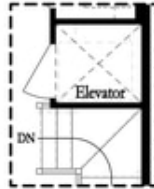


*Opt. Elevator
 on Second Floor*

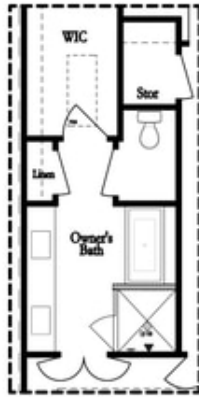
OPTIONS

**Want to Know More
 About This Home?**

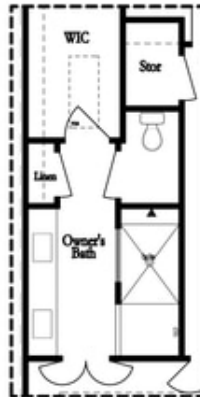
CONTACT OUR COMMUNITY SALES MANAGER
 Call Us @ 770.521.2151



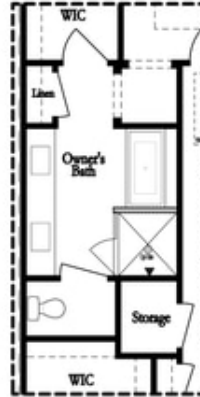
*Opt. Elevator
 on Third Floor*



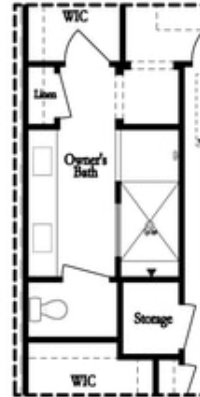
*Opt. Free Standing
 Tub w/ Shower*



Opt. Walk-Through Shower



*Opt. Free Standing
 Tub w/ Shower*



Opt. Walk-Through Shower

OWNER'S SUITE FRONT

OWNER'S SUITE REAR

OPTIONS

**Want to Know More
 About This Home?**

CONTACT OUR COMMUNITY SALES MANAGER
 Call Us @ 770.521.2151