






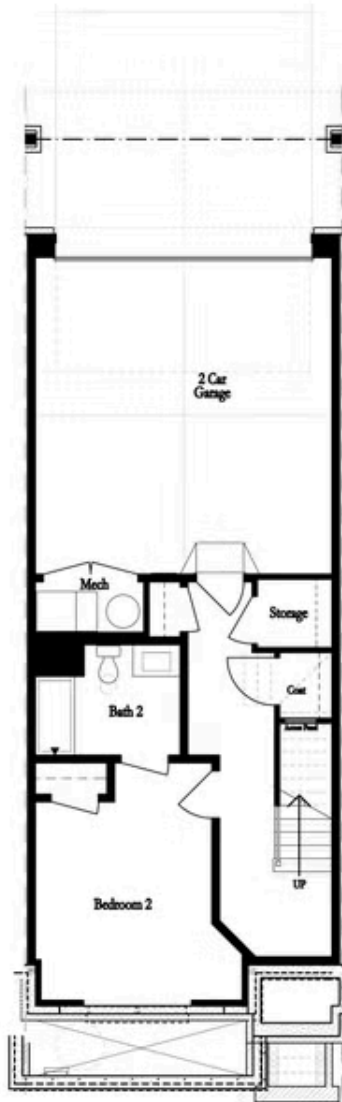
PRICED AT
\$716,690

-  2516 Sq Ft
-  3 Beds
-  3.5 Baths
-  2 Car Garage
-  3.0 Story

MOVE-IN READY! The Jacobsen II features 3 bedrooms and 3.5 bathrooms with a rear entry 2 car garage. Entry on the main living level opens to your spacious Family and dining room with 10' ceilings & Hard Surface flooring that flows throughout the home. The kitchen has a clean and classic feel with white 42" Custom Cabinets, a gray island, Quartz Countertops, a tile backsplash in a herringbone pattern, and a GE stainless Steel appliance package. The family room has a cozy linear fireplace with 6x24 stacked quartzite and a box beam mantel. Just off the kitchen is a sunroom with access to the covered deck. Head to the upper floor for the primary suite, which offers a large walk-in closet and a stunning bathroom with dual vanity, marble countertops, and a separate tub & frameless tile shower. The 3rd bedroom on the terrace level has its own en-suite and a full bathroom with a frameless walk-in shower, making this the perfect spot for guests. Ward's Crossing by The Providence Group is located in the highly regarded Johns Creek community, known for its excellent schools, recreational amenities, shopping, dining, and vibrant cultural scene. The Sales Price Includes all Structural and ...

**Want to Know More
About This Home?**

CONTACT OUR COMMUNITY SALES MANAGER
Call Us @ 770.521.2151



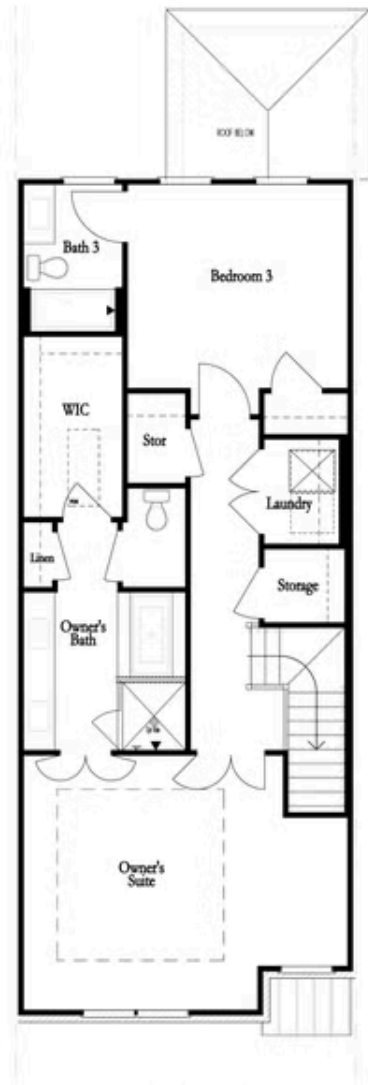
FIRST FLOOR



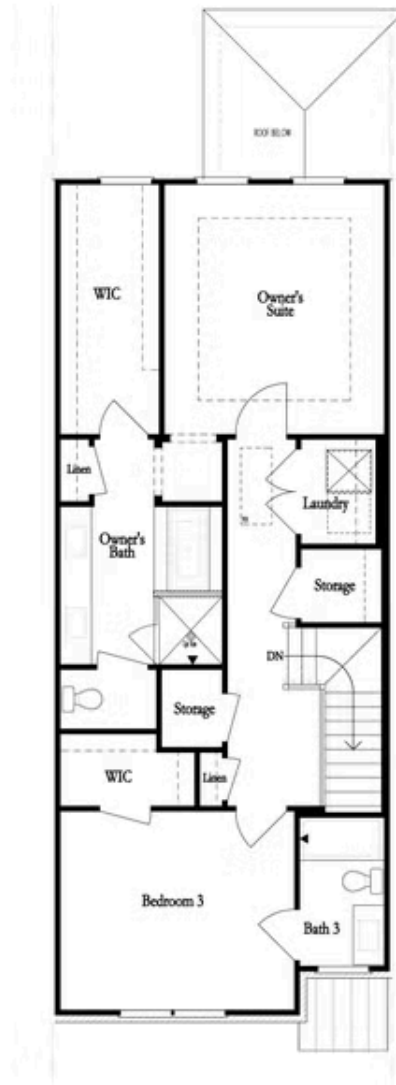
SECOND FLOOR

Want to Know More
About This Home?

CONTACT OUR COMMUNITY SALES MANAGER
Call Us @ 770.521.2151



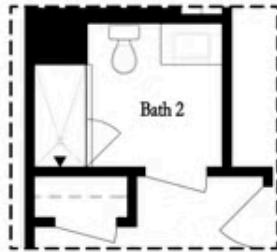
THIRD FLOOR
OWNER'S FRONT



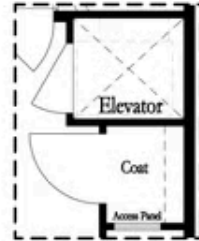
THIRD FLOOR
OWNER'S REAR

Want to Know More
About This Home?

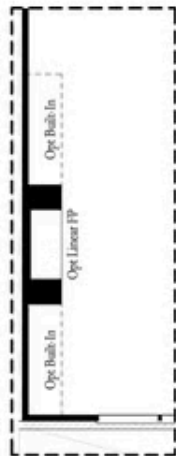
CONTACT OUR COMMUNITY SALES MANAGER
Call Us @ 770.521.2151



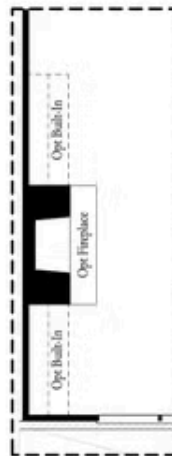
*Opt. Shower
on First Floor Bath*



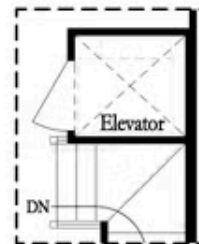
*Opt. Elevator
on First Floor*



Opt. Linear Fireplace



Opt. Fireplace

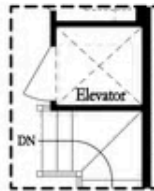


*Opt. Elevator
on Second Floor*

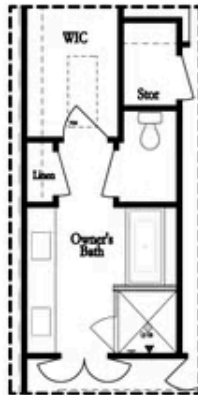
OPTIONS

**Want to Know More
About This Home?**

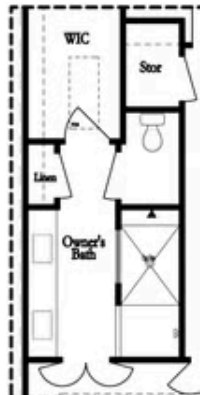
CONTACT OUR COMMUNITY SALES MANAGER
Call Us @ 770.521.2151



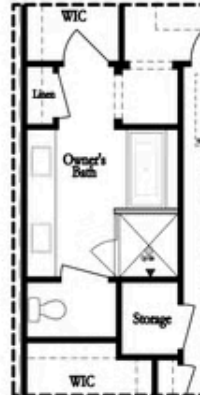
Opt. Elevator
on Third Floor



Opt. Free Standing
Tub w/ Shower



Opt. Walk-Through Shower



Opt. Free Standing
Tub w/ Shower



Opt. Walk-Through Shower

OWNER'S SUITE FRONT

OWNER'S SUITE REAR

OPTIONS

Want to Know More
About This Home?

CONTACT OUR COMMUNITY SALES MANAGER
Call Us @ 770.521.2151