



PRICED AT
\$776,600

 **2516 Sq Ft**

 **3 Beds**

 **3.5 Baths**

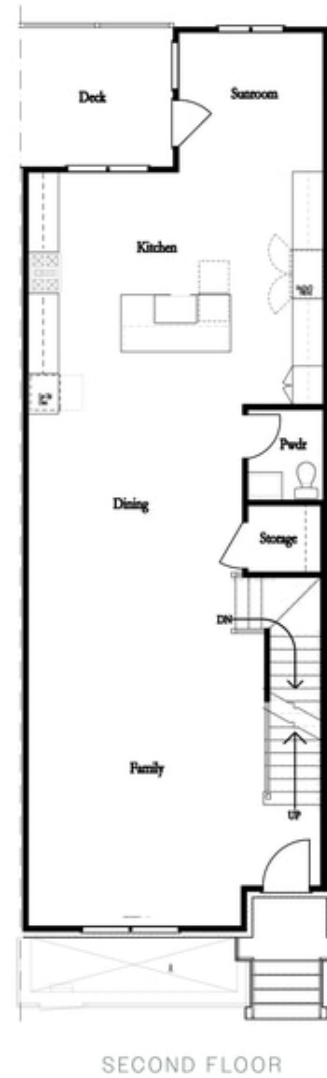
 **2 Car Garage**

 **3.0 Story**

Home for the Holidays! 20K to be used ANY WAY YOU WANT on contracts written in November and an additional \$5k anyway when you close in December. This beautiful Providence Group Home is in the heart of Johns Creek in Ward's Crossing, a gated community. The stunning designer kitchen has a clean white and gray palette, which includes upgraded 42" white cabinetry at the perimeter, a slate gray island, a white farmhouse sink, creamy white quartz countertops with light gray veining, 1" mosaic hexagon tile backsplash, and a GE stainless steel appliance package. The designer kitchen overlooks the dining area and family room with a fireplace. The sunroom provides entertainment or office space, while the terrace level offers a bedroom and bath with a Walk-In shower. The primary bedroom has a fantastic en-suite. The white and gray design finishes continue to the primary bath with a slate gray dual vanity, quartz countertops with under-mount sinks, an upgraded Mega Shower with gorgeous tile, multiple shower heads, and a generous size closet. The laundry room is on the upper level between the primary suite, a secondary bedroom, and a private bath. This is a rare opportunity for new construction townhomes in Johns ...

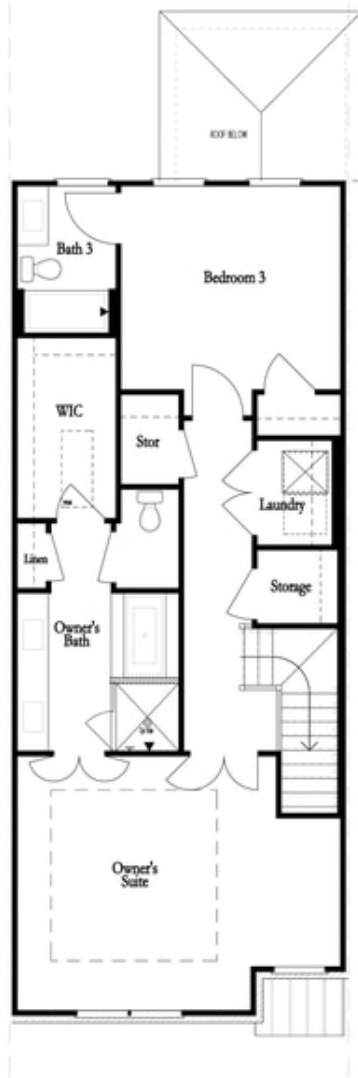
**Want to Know More
About This Home?**

CONTACT OUR COMMUNITY SALES MANAGER
Call Us @ 770.521.2151

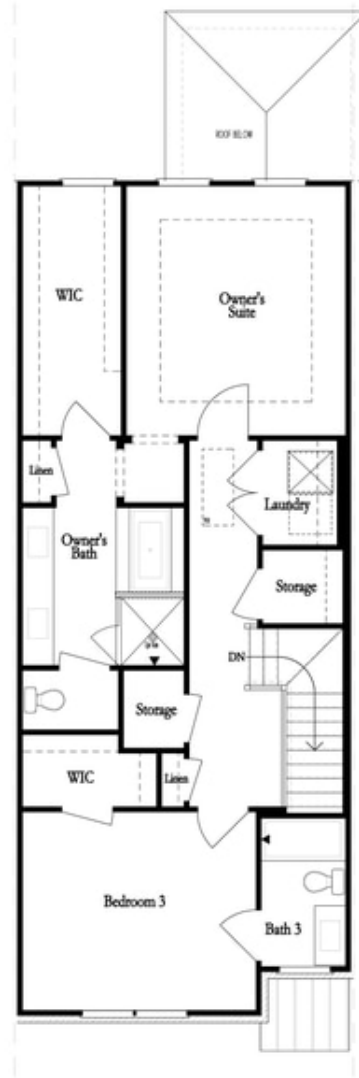


**Want to Know More
About This Home?**

CONTACT OUR COMMUNITY SALES MANAGER
Call Us @ 770.521.2151



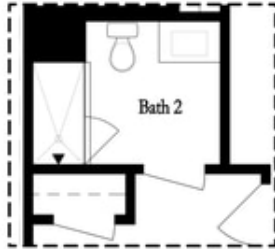
THIRD FLOOR
 OWNER'S FRONT



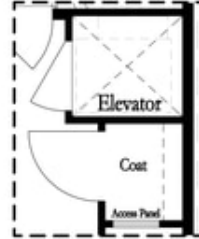
THIRD FLOOR
 OWNER'S REAR

**Want to Know More
 About This Home?**

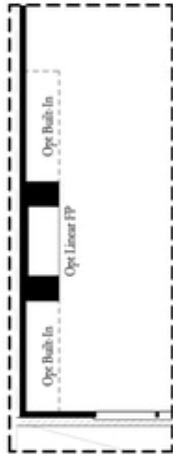
CONTACT OUR COMMUNITY SALES MANAGER
Call Us @ 770.521.2151



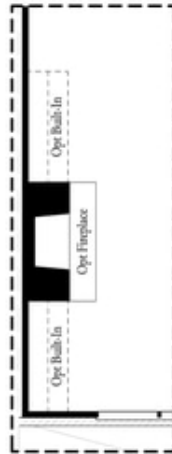
*Opt. Shower
 on First Floor Bath*



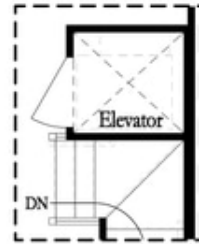
*Opt. Elevator
 on First Floor*



Opt. Linear Fireplace



Opt. Fireplace

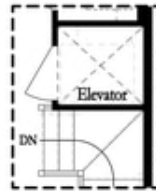


*Opt. Elevator
 on Second Floor*

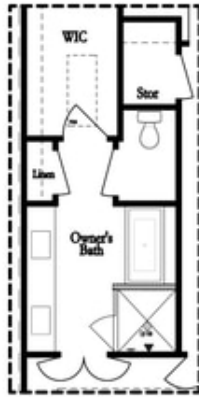
OPTIONS

**Want to Know More
 About This Home?**

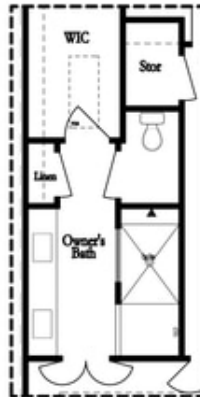
CONTACT OUR COMMUNITY SALES MANAGER
Call Us @ 770.521.2151



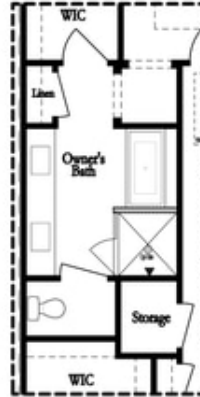
*Opt. Elevator
 on Third Floor*



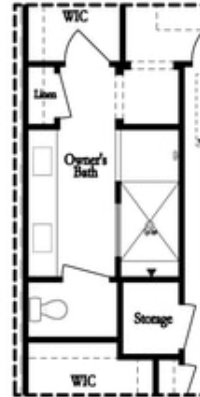
*Opt. Free Standing
 Tub w/ Shower*



Opt. Walk-Through Shower



*Opt. Free Standing
 Tub w/ Shower*



Opt. Walk-Through Shower

OWNER'S SUITE FRONT

OWNER'S SUITE REAR

OPTIONS

**Want to Know More
 About This Home?**

CONTACT OUR COMMUNITY SALES MANAGER
Call Us @ 770.521.2151