



PRICED AT  
**\$776,600**

 2516 Sq Ft

 3 Beds

 3.5 Baths

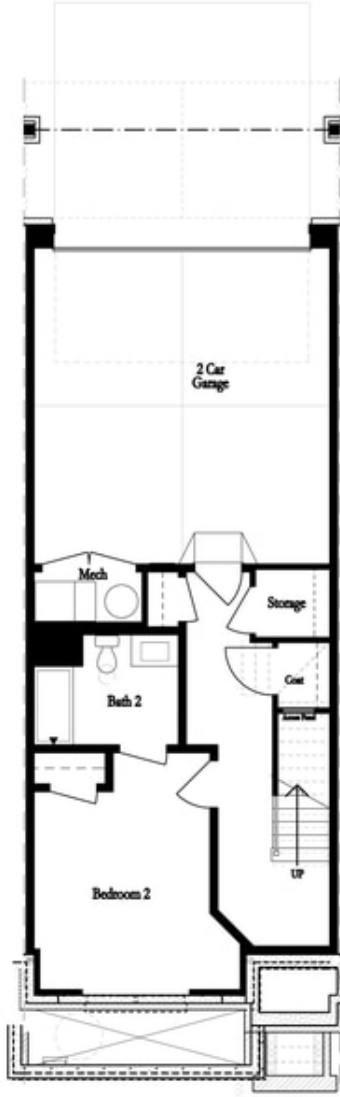
 2 Car Garage

 3.0 Story

Fall Into Savings Sales Event at Ward's Crossing! 20K to be used ANY WAY YOU WANT! This beautiful Providence Group Home is in the heart of Johns Creek in Ward's Crossing, a gated community. The stunning designer kitchen has a clean white and gray palette, which includes upgraded 42" white cabinetry at the perimeter, a slate gray island, a white farmhouse sink, creamy white quartz countertops with light gray veining, 1" mosaic hexagon tile backsplash, and a GE stainless steel appliance package. The designer kitchen overlooks the dining area and family room with a fireplace. The sunroom provides entertainment or office space, while the terrace level offers a bedroom and bath with a Walk-In shower. The primary bedroom has a fantastic en-suite. The white and gray design finishes continue to the primary bath with a slate gray dual vanity, quartz countertops with under-mount sinks, an upgraded Mega Shower with gorgeous tile, multiple shower heads, and a generous size closet. The laundry room is on the upper level between the primary suite, a secondary bedroom, and a private bath. This is a rare opportunity for new construction townhomes in Johns Creek. This home is conveniently situated near top-rated schools, shopping centers, ...

**Want to Know More  
About This Home?**

CONTACT OUR COMMUNITY SALES MANAGER  
Call Us @ 770.521.2151



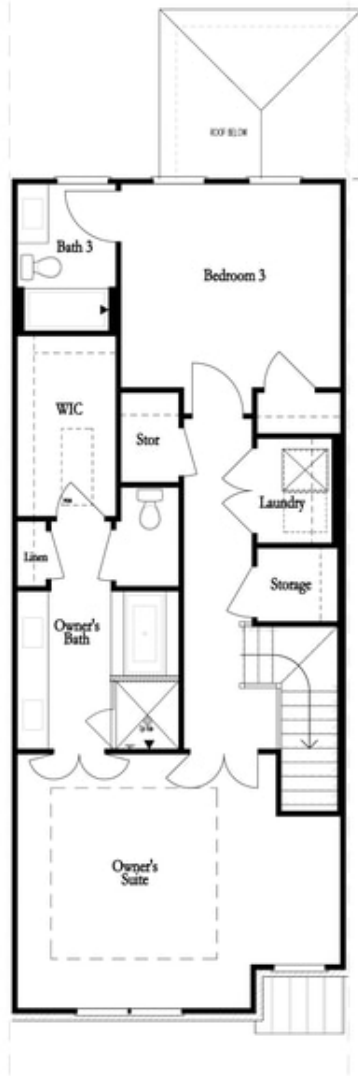
FIRST FLOOR



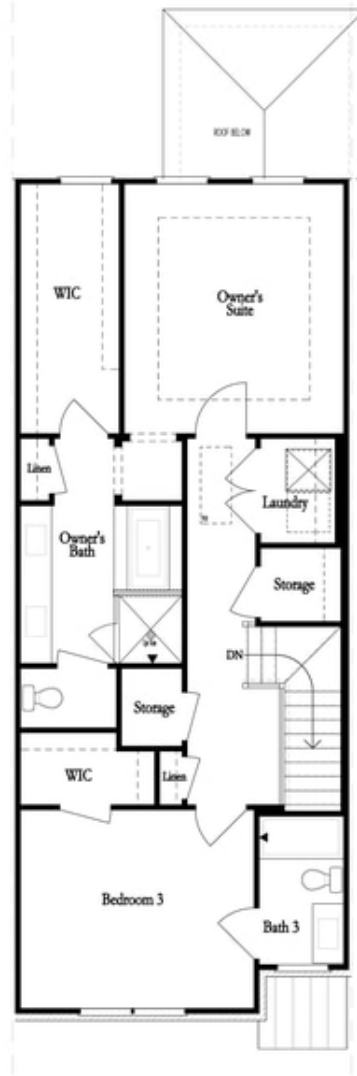
SECOND FLOOR

**Want to Know More  
About This Home?**

CONTACT OUR COMMUNITY SALES MANAGER  
Call Us @ 770.521.2151



THIRD FLOOR  
 OWNER'S FRONT



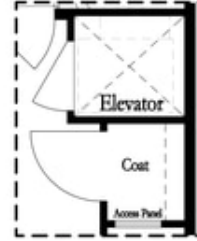
THIRD FLOOR  
 OWNER'S REAR

**Want to Know More  
 About This Home?**

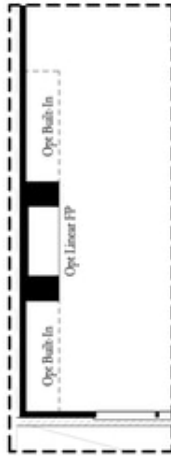
CONTACT OUR COMMUNITY SALES MANAGER  
 Call Us @ 770.521.2151



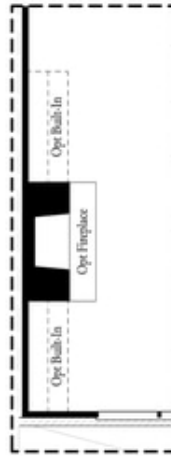
*Opt. Shower  
 on First Floor Bath*



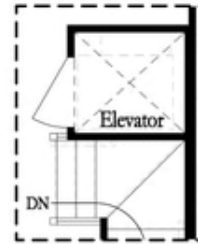
*Opt. Elevator  
 on First Floor*



*Opt. Linear Fireplace*



*Opt. Fireplace*

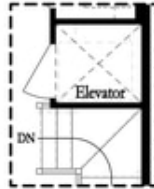


*Opt. Elevator  
 on Second Floor*

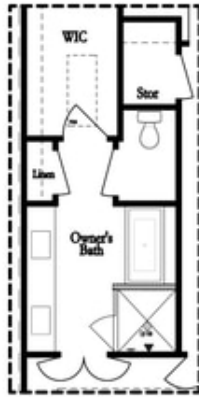
OPTIONS

**Want to Know More  
 About This Home?**

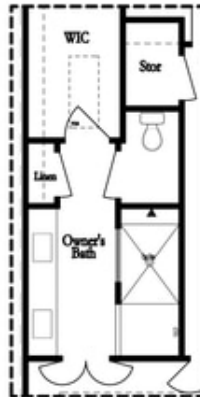
CONTACT OUR COMMUNITY SALES MANAGER  
 Call Us @ 770.521.2151



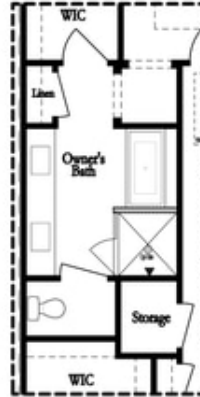
*Opt. Elevator  
 on Third Floor*



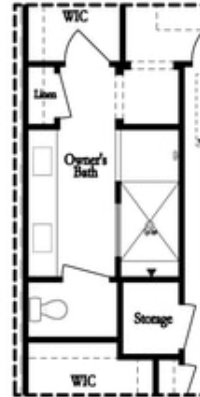
*Opt. Free Standing  
 Tub w/ Shower*



*Opt. Walk-Through Shower*



*Opt. Free Standing  
 Tub w/ Shower*



*Opt. Walk-Through Shower*

OWNER'S SUITE FRONT

OWNER'S SUITE REAR

OPTIONS

**Want to Know More  
 About This Home?**

CONTACT OUR COMMUNITY SALES MANAGER  
 Call Us @ 770.521.2151