



PRICED AT  
**\$686,550**

 2400 Sq Ft

 4 Beds

 3.5 Baths

 2 Car Garage

 3.0 Story

PRE-SALE OPPORTUNITY in Ward's Crossing by The Providence Group, located in the heart of Johns Creek. This is a rare opportunity, and for a LIMITED TIME, BUYER MAKES ALL DESIGN SELECTIONS. Welcome to the brand-new Benton III floorplan at Ward's Crossing in Johns Creek! This beautiful 4-bedroom design features 2400 square feet of living space on three levels. Sales price includes the base price of the home, several luxurious upgrades, lot premium, and all structural options, including a terrace-level walk-in shower, a huge walk-in shower with drying area in the primary bathroom, and a linear fireplace. As you enter the home through the first-level front door, you will find your first full bedroom, which makes a perfect office or guest bedroom. Upstairs, you will find a beautiful open layout with 10-ft ceilings and a gorgeous chef's kitchen featuring ample cabinet space, a walk-in pantry, and GE Profile appliances. The spacious family room features a beautiful linear gas fireplace. A laundry room is located on this level, along with a beautiful sunroom that opens onto a deck. Tons of light fill this main level with an abundance of windows! On the third level, you will find the primary suite, which features ...

**Want to Know More  
About This Home?**

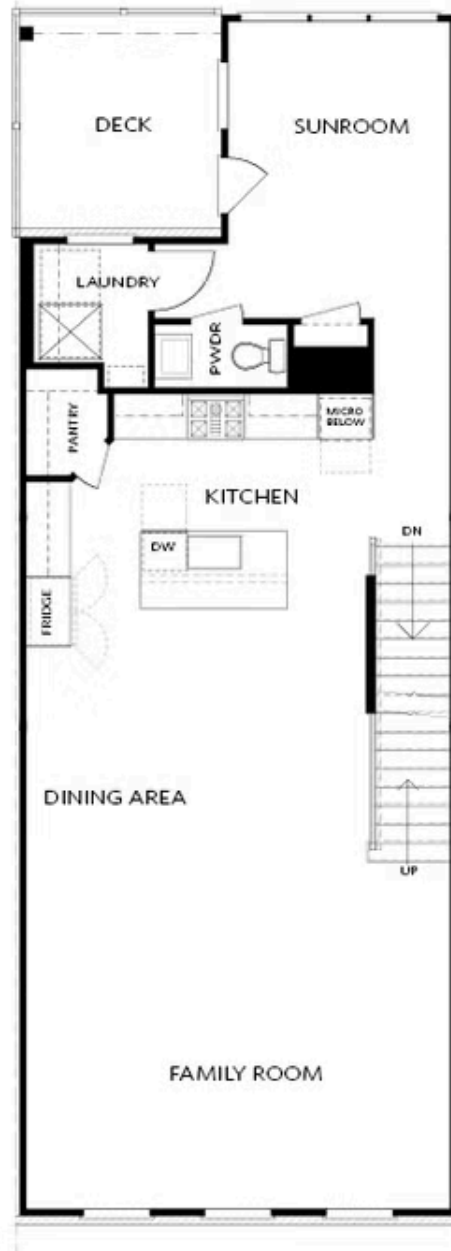
CONTACT OUR COMMUNITY SALES MANAGER  
Call Us @ 770.521.2151



Elevation 03

Want to Know More  
About This Home?

CONTACT OUR COMMUNITY SALES MANAGER  
Call Us @ 770.521.2151



Elevation O3

Want to Know More  
About This Home?

CONTACT OUR COMMUNITY SALES MANAGER  
Call Us @ 770.521.2151



Want to Know More  
About This Home?

CONTACT OUR COMMUNITY SALES MANAGER  
Call Us @ 770.521.2151



OPT Right Side  
 Fireplace

\* Elevation O3 Only



OPT Right Side  
 Linear Fireplace

\* Elevation O3 Only



OPT Left Side  
 Linear Fireplace



OPT Left Side  
 Fireplace

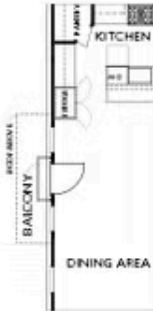


OPT Double Doors



OPT Shower

TERRACE



OPT Side Juliet Balcony

\*End Unit Only | Elevation O3 Only



OPT Side Porch

\*End Unit Only | Elevation O3 Only

SECOND FLOOR

Want to Know More  
 About This Home?

CONTACT OUR COMMUNITY SALES MANAGER  
 Call Us @ 770.521.2151



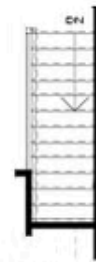
OPT Walk-Through Shower



OPT Freestanding Tub/Shower



OPT Decked Tub/Shower



OPT Open Rail

THIRD FLOOR

Want to Know More  
About This Home?

CONTACT OUR COMMUNITY SALES MANAGER  
Call Us @ 770.521.2151