



PRICED FROM
\$654,900

 2,400 Sq Ft

 4 Beds

 3.5 Baths

 2 Car Garage

 3.0 Story

- Three level Townhome with a 2-car Garage on the Terrace Level
- Terrace level flex suite: bedroom with full bath—ideal for guests, office, or studio; Coat closet and walk-in closet included
- Main (second) level: open-concept kitchen, dining, and family room layout with adjacent sunroom off the kitchen; powder room for convenience
- Kitchen features a large pantry, island with dishwasher overlooking the dining area and family room
- Laundry Room on the main living level
- Upper (third) level: private Owner's Suite includes massive walk-in closet and Owner's Bath with double vanity, plus

[Read More Online](#)

Available Elevations





Elevation S2

Want to Know More
About This Home?

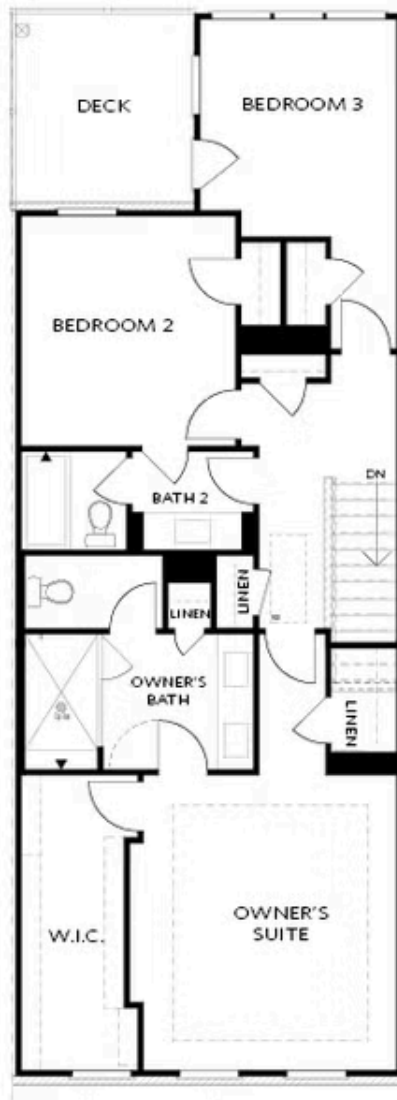
CONTACT OUR COMMUNITY SALES MANAGER
Call Us @ 770.521.2151



Elevation S2

Want to Know More
About This Home?

CONTACT OUR COMMUNITY SALES MANAGER
Call Us @ 770.521.2151



Elevation S2

Want to Know More
About This Home?

CONTACT OUR COMMUNITY SALES MANAGER
Call Us @ 770.521.2151



OPT Shower

TERRACE



OPT Fireplac



OPT Linear Fireplace

SECOND FLOOR



OPT Walk-Through Shower



OPT Freestanding Tub with
Seperate Shower



OPT Decked Tub with
Seperate Shower



OPT Open Rail

THIRD FLOOR

Want to Know More
About This Home?

CONTACT OUR COMMUNITY SALES MANAGER
Call Us @ 770.521.2151