




PRICED FROM
\$762,800

 2,821 - 2,837 Sq Ft

 4 Beds

 3.5 Baths

 2 Car Garage

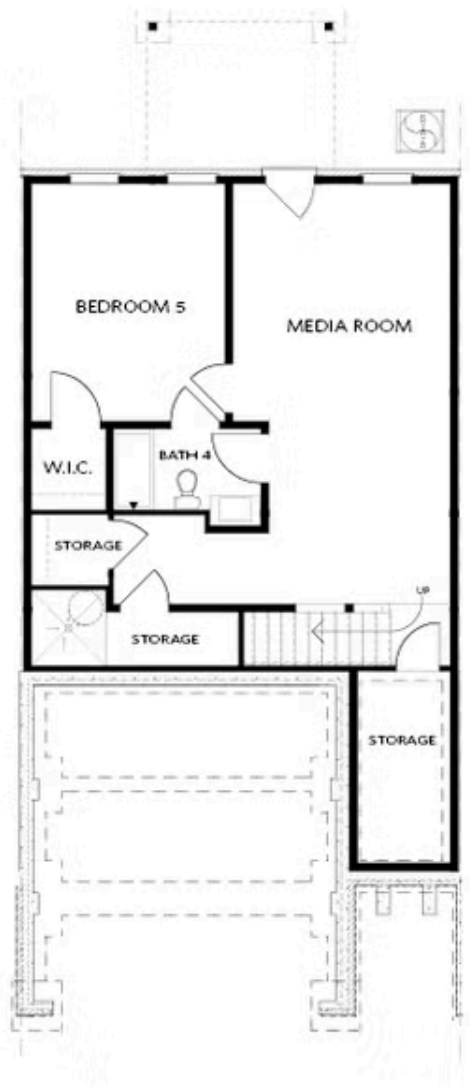
 3.0 Story

- 2-Car Garage on Main Level
- Gourmet Kitchen with Large Island Overlooking Dining Room and Family Room
- Spacious Main Level Layout Ideal for Entertaining
- Owner's Suite with Huge Walk-In Closet, Separate Tub & Shower
- Secondary Bedrooms Offer Walk-In Closet and Easy Access to Full Bath
- Third Floor has a Large Bedroom, Full Bath, and access to Attic Storage

[Read More Online](#)

Available Elevations



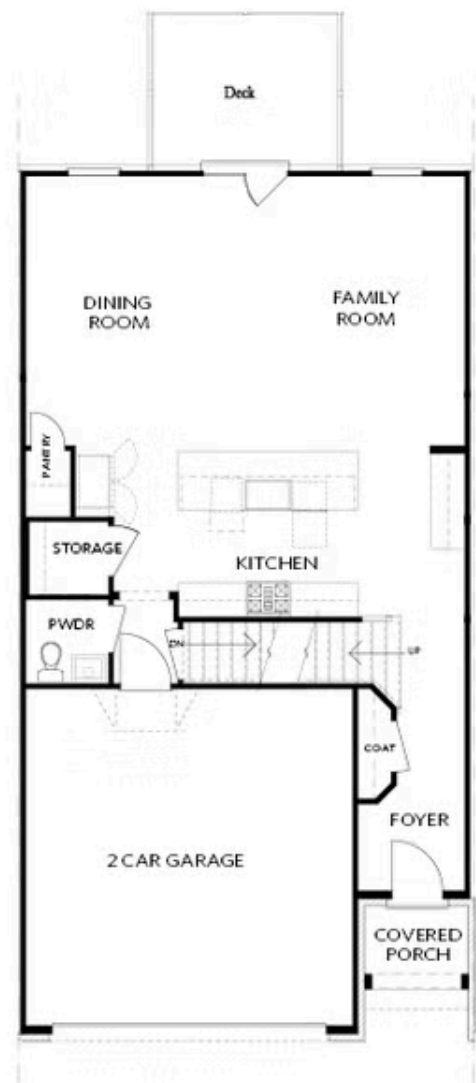


BASEMENT

Elevation C, I, K

Want to Know More
About This Home?

CONTACT OUR COMMUNITY SALES MANAGER
Call Us @ 770.521.2151

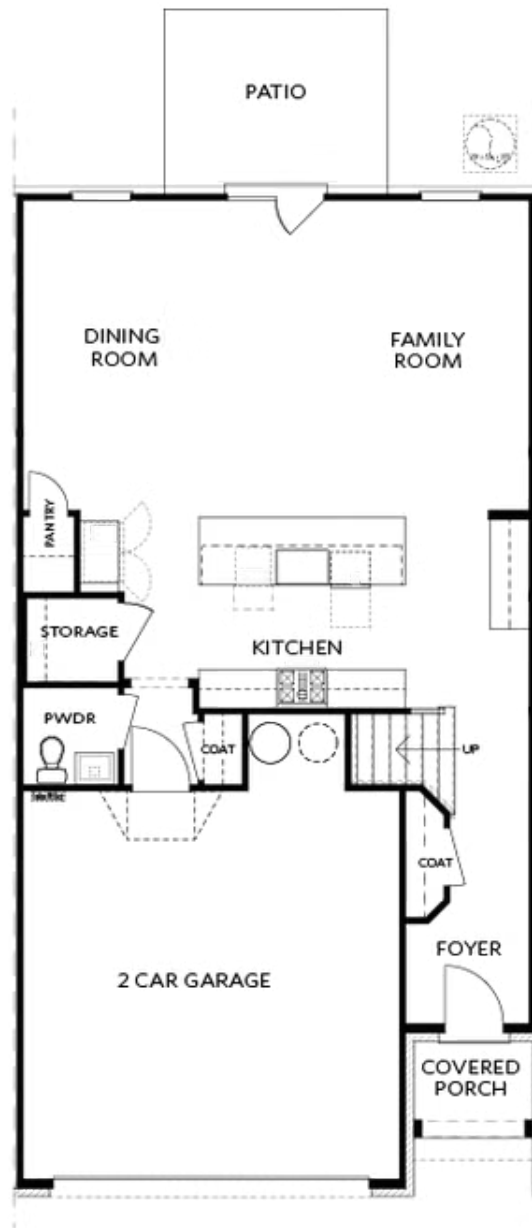


FIRST FLOOR

Elevation C, I, K

Want to Know More
About This Home?

CONTACT OUR COMMUNITY SALES MANAGER
Call Us @ 770.521.2151



Elevations C, I, K

Want to Know More
About This Home?

CONTACT OUR COMMUNITY SALES MANAGER
Call Us @ 770.521.2151

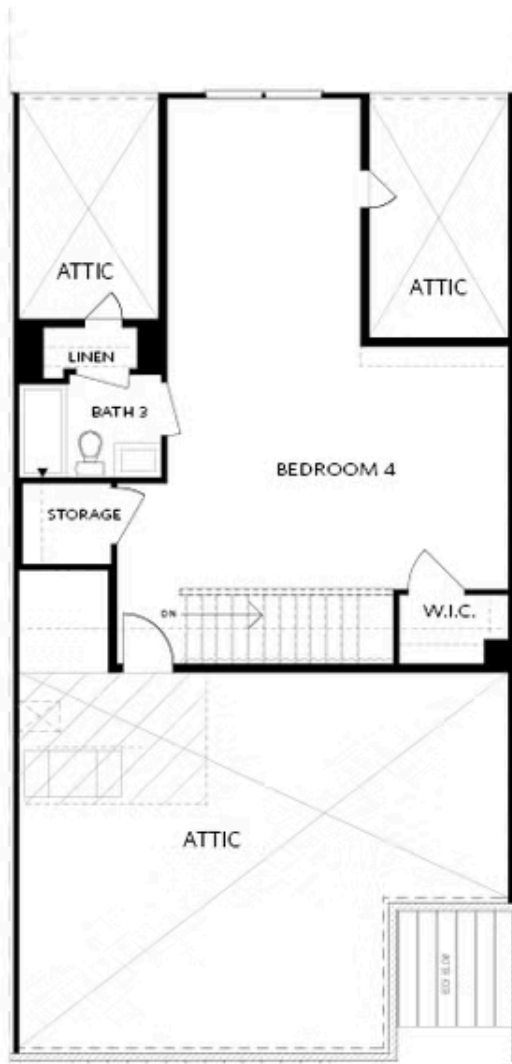


SECOND FLOOR

Elevation C, I, K

Want to Know More
About This Home?

CONTACT OUR COMMUNITY SALES MANAGER
Call Us @ 770.521.2151

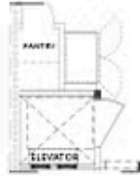


THIRD FLOOR

Elevation C, I, K

Want to Know More
About This Home?

CONTACT OUR COMMUNITY SALES MANAGER
Call Us @ 770.521.2151



Opt. Elevator
First Floor



Opt. Fireplace



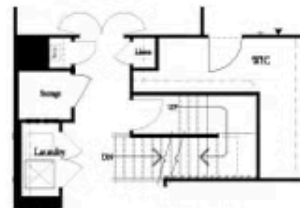
Opt. Linear Fireplace



Owner's Suite & Bath
*No Trey or Vaulted Ceilings w/ 3rd Floor



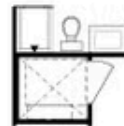
Opt. Elevator
Second Floor



2nd Floor Stairs to 3rd Floor



Opt. Open Rail on 3rd Floor



Opt. Elevator
Third Floor

OPTIONS ON A SLAB WITH 3RD FLOOR

Want to Know More
About This Home?

CONTACT OUR COMMUNITY SALES MANAGER
Call Us @ 770.521.2151