



PRICED FROM  
**\$762,800**

 2,821 - 2,837 Sq Ft

 4 Beds

 3.5 Baths

 2 Car Garage

 3.0 Story

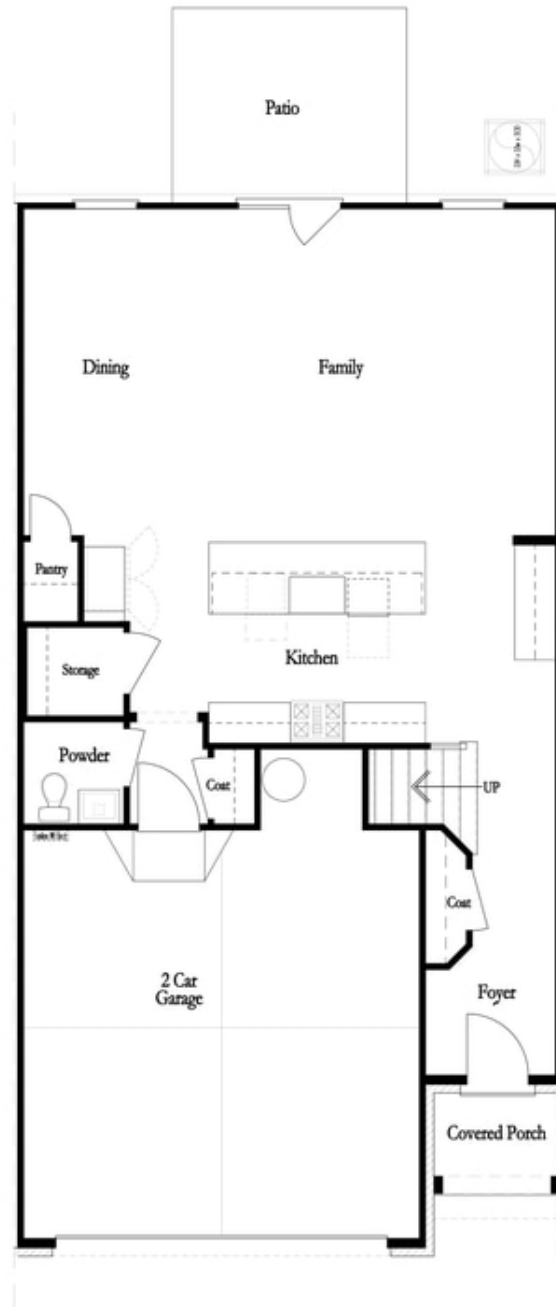
- 2-Car Garage on Main Level
- Gourmet Kitchen with Large Island Overlooking Dining Room and Family Room
- Spacious Main Level Layout Ideal for Entertaining
- Owner's Suite with Huge Walk-In Closet, Separate Tub & Shower
- Secondary Bedrooms Offer Walk-In Closet and Easy Access to Full Bath
- Third Floor has a Large Bedroom, Full Bath, and access to Attic Storage

[Read More Online](#)

## Available Elevations

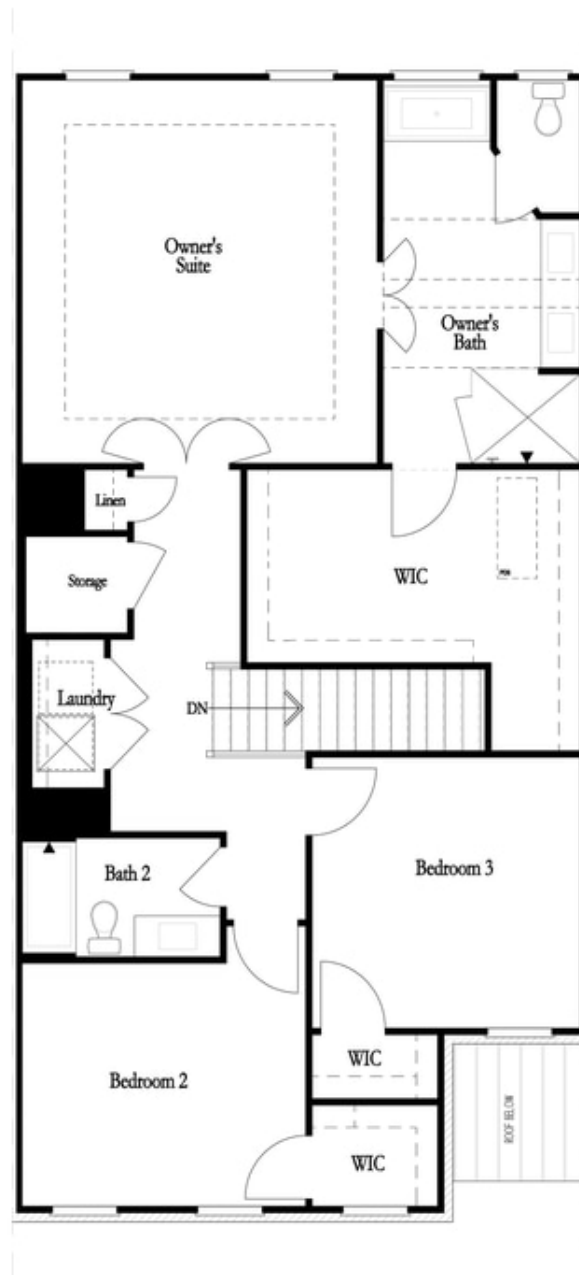


Elevation



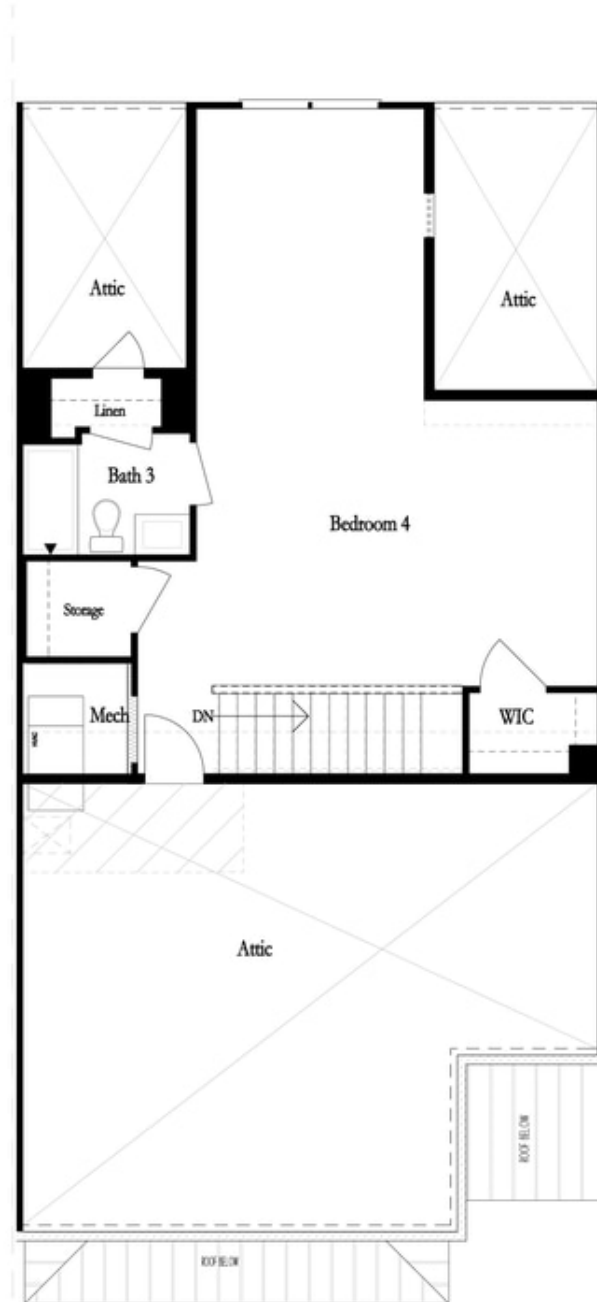
**Want to Know More  
About This Home?**

CONTACT OUR COMMUNITY SALES MANAGER  
Call Us @ 770.521.2151



**Want to Know More  
About This Home?**

CONTACT OUR COMMUNITY SALES MANAGER  
Call Us @ 770.521.2151

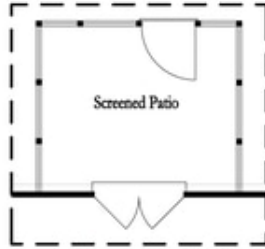


**Want to Know More  
About This Home?**

CONTACT OUR COMMUNITY SALES MANAGER  
Call Us @ 770.521.2151



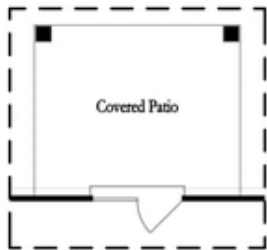
*Opt. Screened Patio  
w/ Std Garden Door*



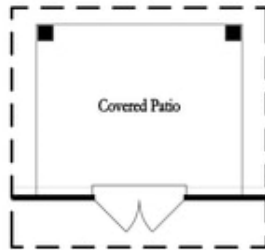
*Opt. Screened Patio  
w/ French Door*



*Opt. Screened Patio  
w/ Slider Door*



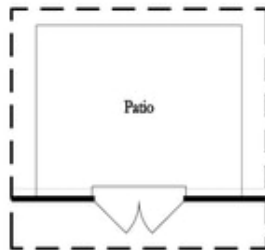
*Opt. Covered Patio  
w/ Std Garden Door*



*Opt. Covered Patio  
w/ French Door*



*Opt. Covered Patio  
w/ Slider Door*



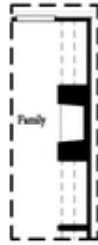
*Opt. French Door*



*Opt. Slider Door*

**Want to Know More  
About This Home?**

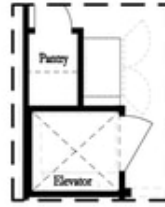
CONTACT OUR COMMUNITY SALES MANAGER  
Call Us @ 770.521.2151



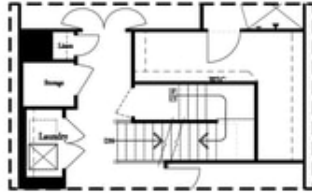
*Opt. Fireplace*



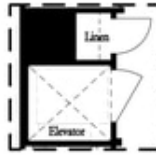
*Opt. Linear Fireplace*



*Opt. Elevator  
 First Floor*



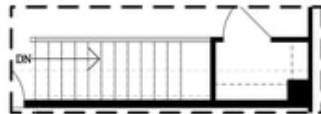
*2nd Floor Stairs to 3rd Floor*



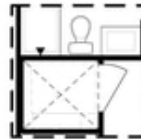
*Opt. Elevator  
 Second Floor*



*Owner's Suite & Bath  
 \*No Trey or Vaulted Ceilings w/ 3rd Floor*



*Opt. Open Rail on 3rd Floor*



*Opt. Elevator  
 Third Floor*

OPTIONS

**Want to Know More  
 About This Home?**

CONTACT OUR COMMUNITY SALES MANAGER  
 Call Us @ 770.521.2151