



PRICED AT
\$872,900

 3111 Sq Ft

 3 Beds

 2.5 Baths

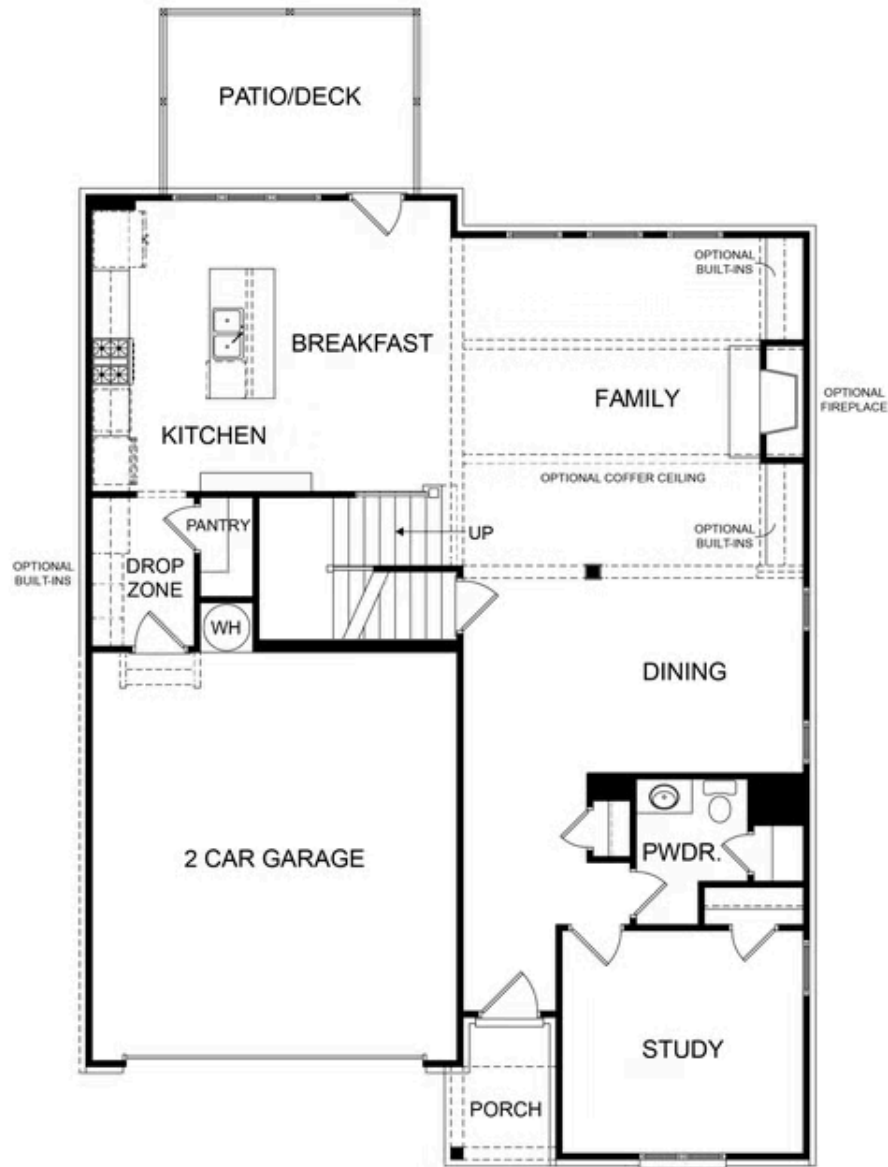
 2 Car Garage

 2.0 Story

GRAND OPENING at Ward's Crossing, a highly anticipated, gated community in the heart of Johns Creek! Built by The Providence Group, The Mansfield plan offers 3-4 bedrooms, 2.5-3 baths and over 3100 square feet of luxury living space! This plan is both functional and beautiful and has options! All structural and design options for the home can still be customized by the purchaser! Coming into the home, off of the spacious front porch, you will find an inviting study, which can also be converted to a bedroom. The powder room sits next to this study and can be a full bathroom as well, if selected. As you come into the main living area of the home, you will find a gorgeous dining room area that is separate from the open kitchen and living but still a cohesive part of the space. The large, light-filled family room is accentuated by a gas burning fireplace, perfect for family movie nights or a cuddle on the couch with your loved one. A beautiful and spacious entertainer's kitchen looks out over the family room and features a very sizeable kitchen island, GE Profile appliances - including double oven, and a large walk-in pantry. Just ...

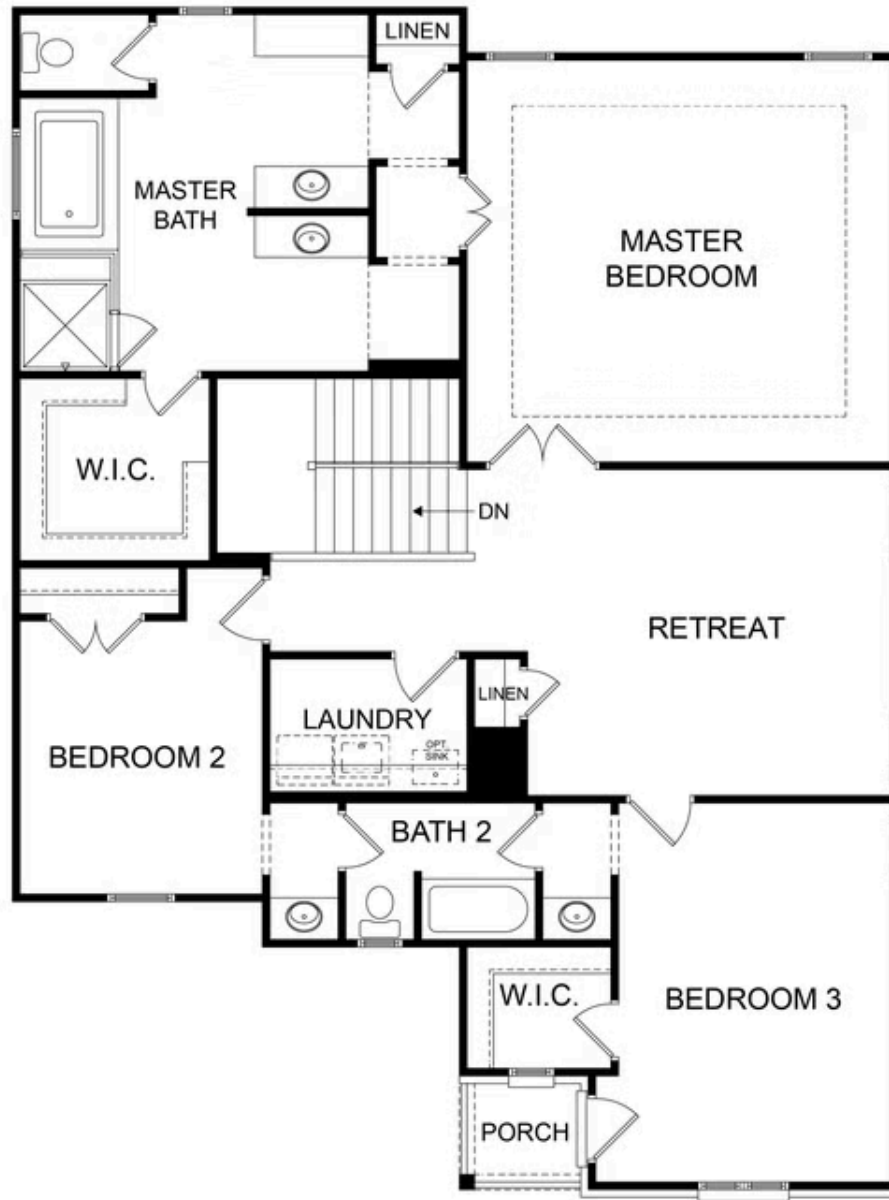
**Want to Know More
About This Home?**

CONTACT OUR COMMUNITY SALES MANAGER
Call Us @ 770.521.2151



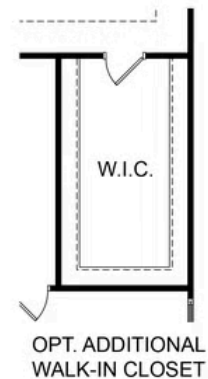
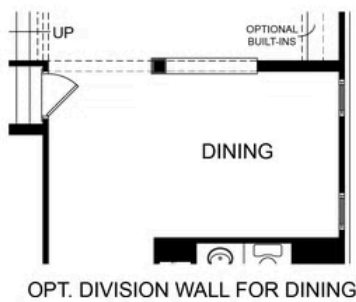
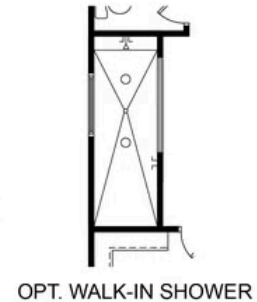
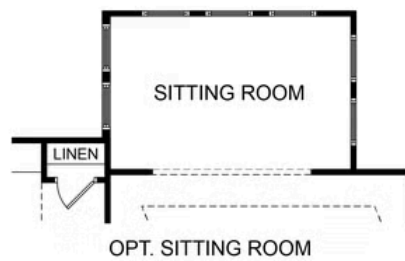
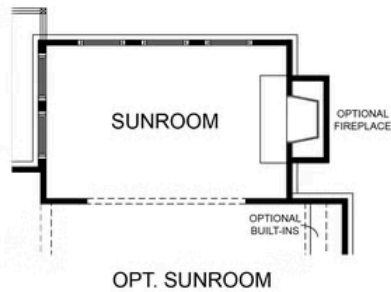
Want to Know More
About This Home?

CONTACT OUR COMMUNITY SALES MANAGER
Call Us @ 770.521.2151



Want to Know More
About This Home?

CONTACT OUR COMMUNITY SALES MANAGER
Call Us @ 770.521.2151



Want to Know More
About This Home?

CONTACT OUR COMMUNITY SALES MANAGER
Call Us @ 770.521.2151