



PRICED AT
\$1,114,860

 3922 Sq Ft

 5 Beds

 4.0 Baths

 2 Car Garage

 3.0 Story

Ward's Crossing by The Providence Group, located in Johns Creek. The Montgomery This open-concept layout features a main floor guest retreat or home office with a walk-in shower. Chef-inspired Kitchen features custom cabinetry, Quartz countertops, and a GE stainless steel appliance package. The Kitchen overlooks the oversized patio and private flat backyard. The Main living level offers a 10' ceiling and hardwood flooring throughout and a two-story Family room. The second floor offers 3 incredible bedrooms with 2 full bathrooms. The primary bathroom offers separate vanities and closets. Ward's Crossing is a gated community with a pool and pool house. HOA fees cover a community pool, landscaping, and lawn maintenance. Excellent Location with top-rated Schools! Estimated Move-In April / May 2024.

**Want to Know More
About This Home?**

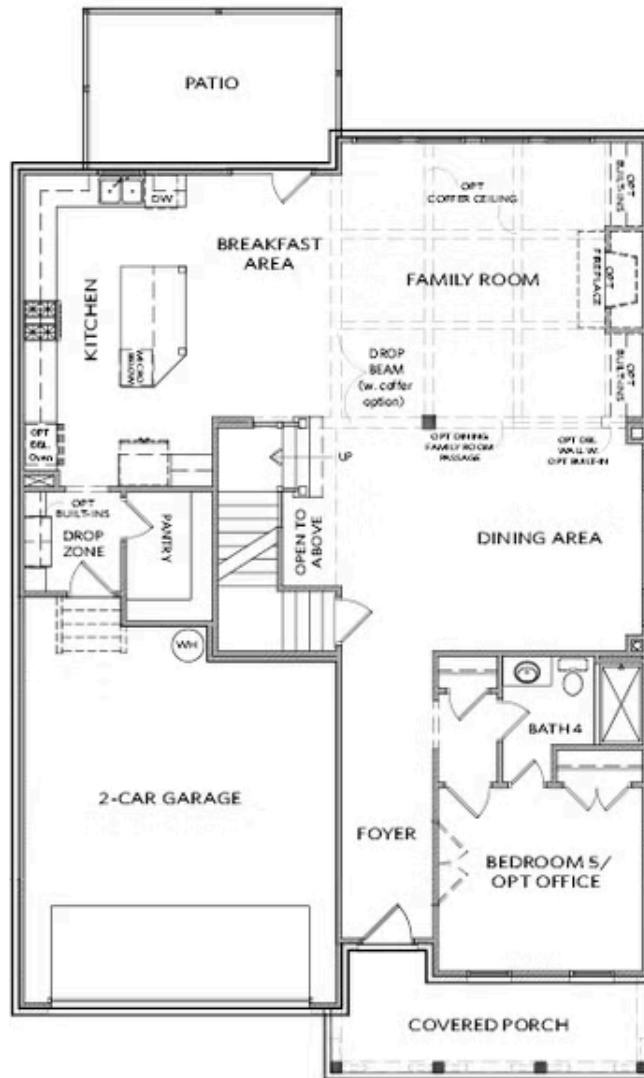
CONTACT OUR COMMUNITY SALES MANAGER
Call Us @ 770.521.2151



Elevation A & B

Want to Know More
About This Home?

CONTACT OUR COMMUNITY SALES MANAGER
Call Us @ 770.521.2151



Elevation A & B

Want to Know More
 About This Home?

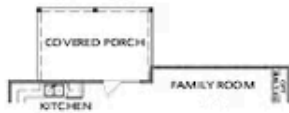
CONTACT OUR COMMUNITY SALES MANAGER
 Call Us @ 770.521.2151



OPT Owner's Walk-In Shower



OPT Extended Porch & Awning



OPT Covered Porch



OPT Sunroom; OPT Patio/Deck
 OPT Fireplace on Sunroom



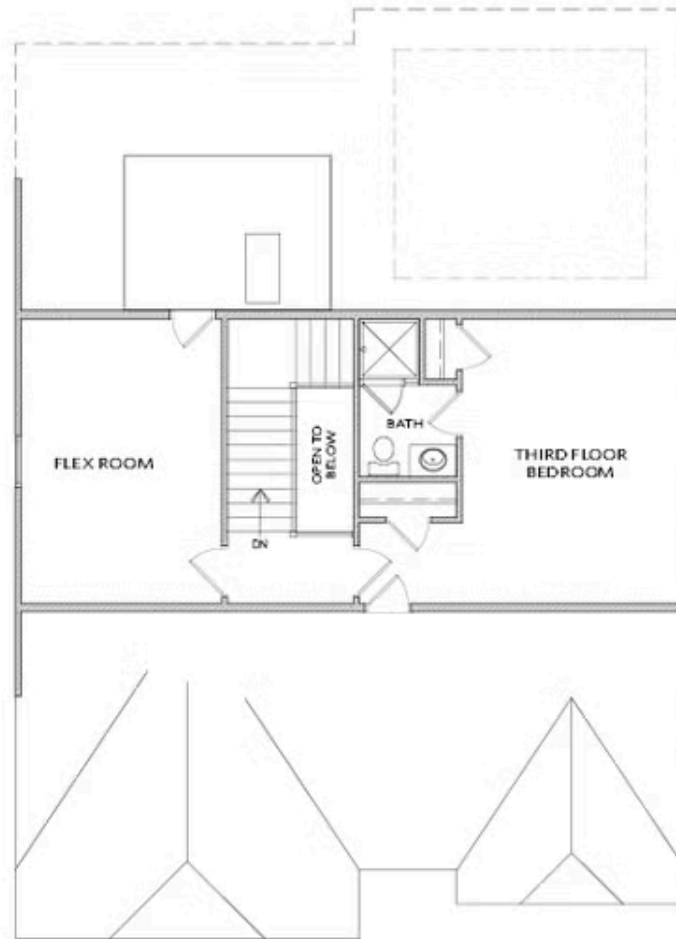
OPT Extended Kitchen



OPT Extended Kitchen w. OPT Sunroom &
 OPT Patio/Deck

Want to Know More
 About This Home?

CONTACT OUR COMMUNITY SALES MANAGER
 Call Us @ 770.521.2151



*ONLY Available on a Slab Home

Want to Know More
About This Home?

CONTACT OUR COMMUNITY SALES MANAGER
Call Us @ 770.521.2151