



PRICED AT  
**\$797,075**

 2837 Sq Ft

 4 Beds

 3.5 Baths

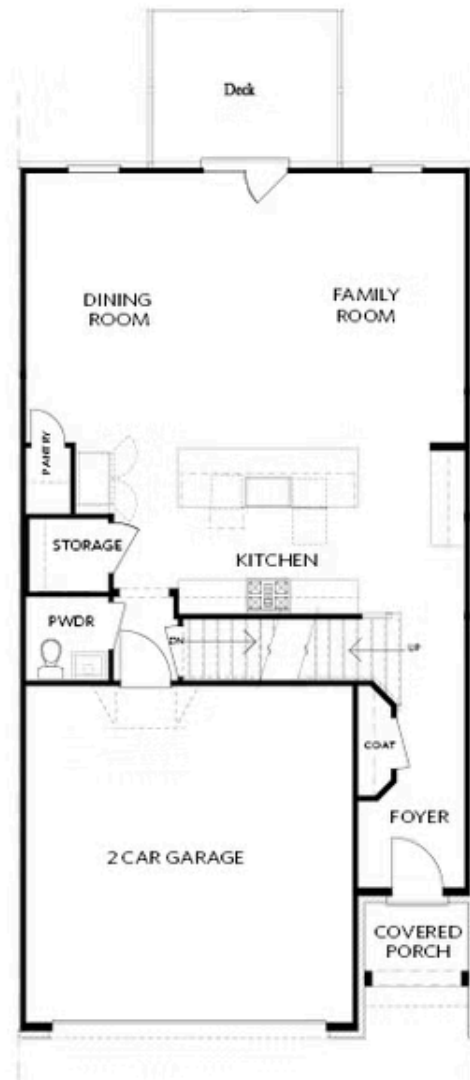
 2 Car Garage

 3.0 Story

GRAND OPENING @ the highly anticipated Ward's Crossing! A brand new gated community, located in the heart of Johns Creek, and built by The Providence Group. This is a rare opportunity for new construction townhomes in Johns Creek. The Ellington is currently under construction and will be ready for move in January/February of 2024. This floorplan features 3 story living with an option to add an elevator (pending the stage of construction). 4 bedrooms, 3.5 baths, living level on the main, two-car garage, covered porch, fenced in backyard and over 2800 square feet of space! This spacious and well-appointed townhome truly lives like a single family home and is built with the highest quality and environmentally friendly products, Energy Star rated and includes Thermacrete, a truly superior party wall material. Located in the heart of Johns Creek, right next to Johns Creek High School! And, State Bridge Crossing Elementary is just across the street! Give us a call today to schedule your appointment! \*\*\*Please note the photos shown are not of the exact property but are similar, as the home is currently under construction and will be completed January/February 2024. Please call for additional details.\*\*\*Closing cost incentive available with one ...

Want to Know More  
About This Home?

CONTACT OUR COMMUNITY SALES MANAGER  
Call Us @ 770.521.2151



FIRST FLOOR

Elevation C, I, K

Want to Know More  
About This Home?

CONTACT OUR COMMUNITY SALES MANAGER  
Call Us @ 770.521.2151

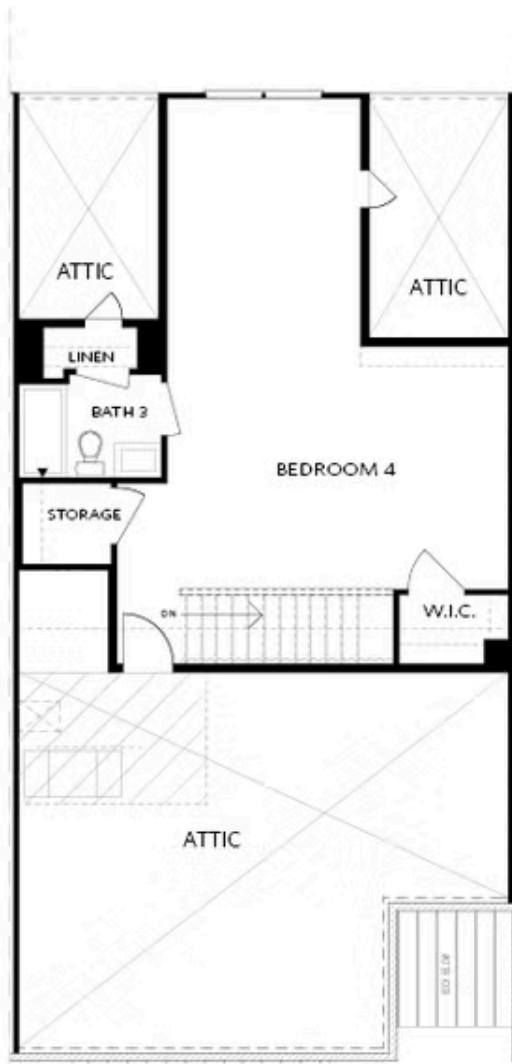


SECOND FLOOR

Elevation C, I, K

Want to Know More  
About This Home?

CONTACT OUR COMMUNITY SALES MANAGER  
Call Us @ 770.521.2151

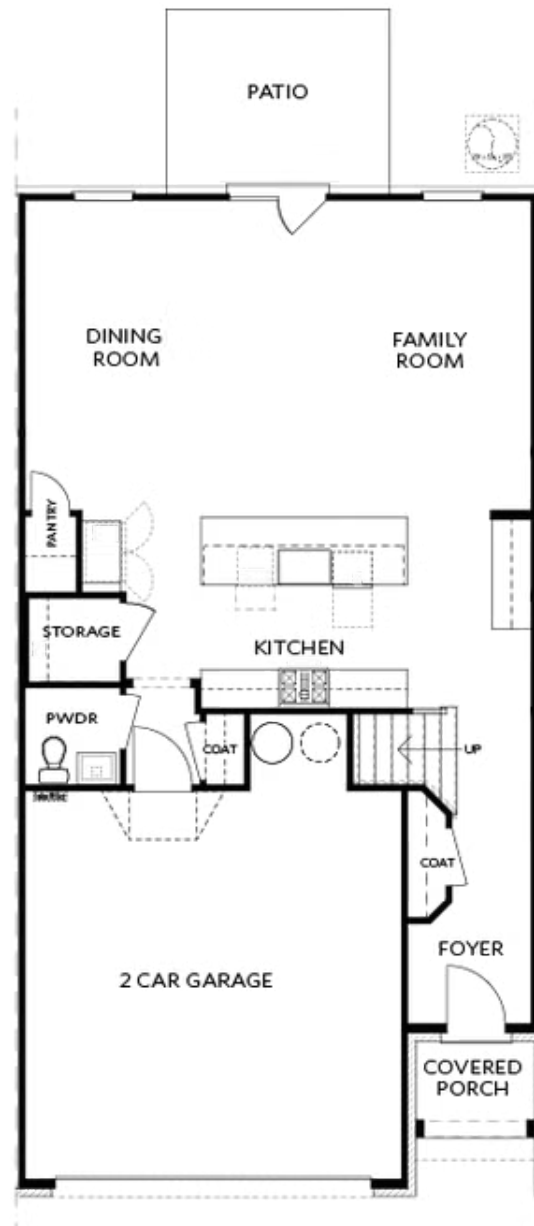


THIRD FLOOR

Elevation C, I, K

Want to Know More  
About This Home?

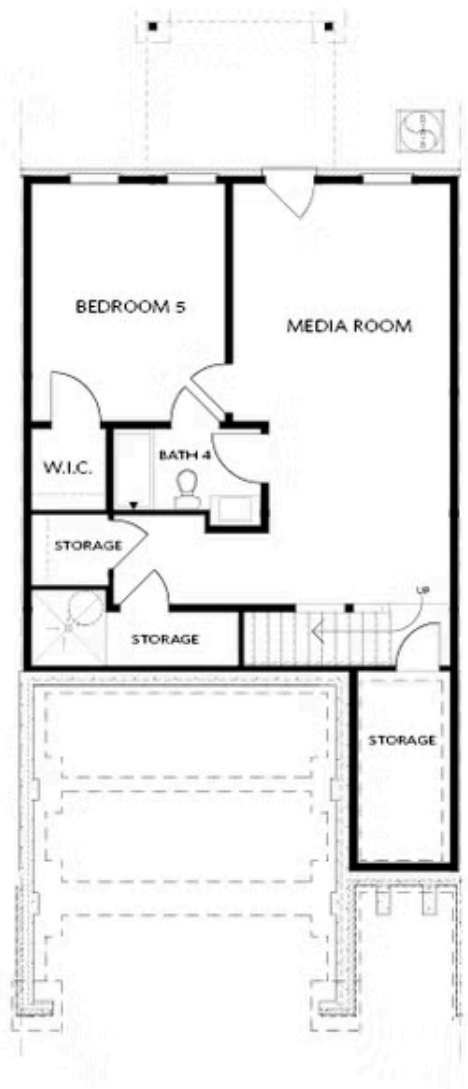
CONTACT OUR COMMUNITY SALES MANAGER  
Call Us @ 770.521.2151



Elevations C, I, K

Want to Know More  
About This Home?

CONTACT OUR COMMUNITY SALES MANAGER  
Call Us @ 770.521.2151

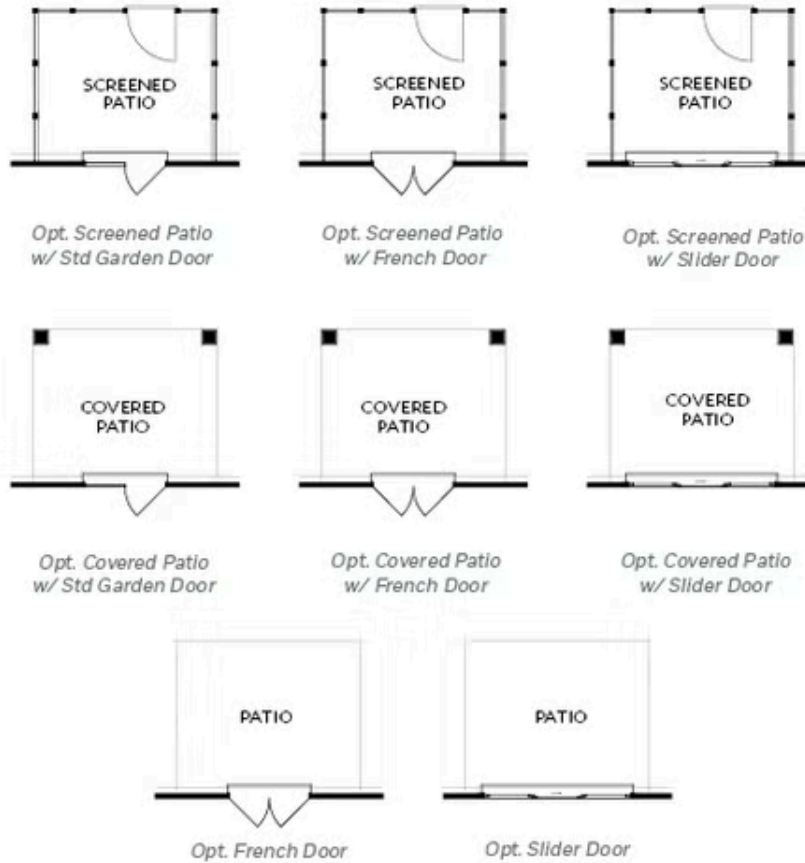


BASEMENT

Elevation C, I, K

Want to Know More  
About This Home?

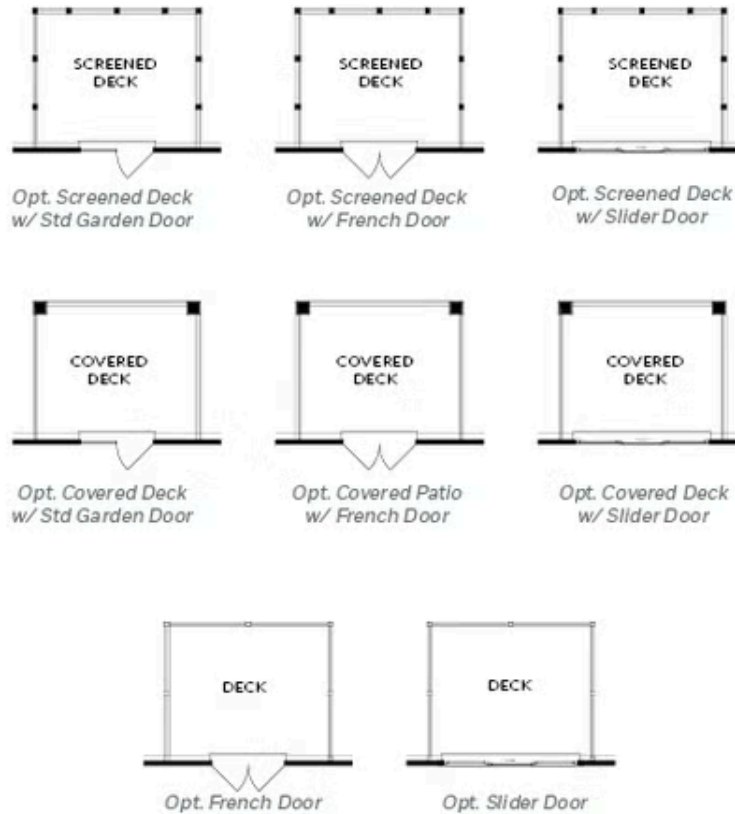
CONTACT OUR COMMUNITY SALES MANAGER  
Call Us @ 770.521.2151



FIRST FLOOR  
PATIO OPTIONS  
ON A SLAB

Want to Know More  
About This Home?

CONTACT OUR COMMUNITY SALES MANAGER  
Call Us @ 770.521.2151

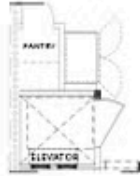


FIRST FLOOR  
DECK OPTIONS  
ON A BASEMENT

Want to Know More  
About This Home?

CONTACT OUR COMMUNITY SALES MANAGER  
Call Us @ 770.521.2151





Opt. Elevator  
First Floor



Opt. Fireplace



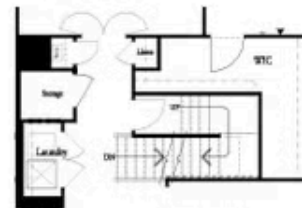
Opt. Linear Fireplace



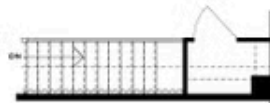
Owner's Suite & Bath  
\*No Trey or Vaulted Ceilings w/ 3rd Floor



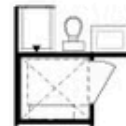
Opt. Elevator  
Second Floor



2nd Floor Stairs to 3rd Floor



Opt. Open Rail on 3rd Floor



Opt. Elevator  
Third Floor

### OPTIONS ON A SLAB WITH 3RD FLOOR

Want to Know More  
About This Home?

CONTACT OUR COMMUNITY SALES MANAGER  
Call Us @ 770.521.2151



Opt. Shower



Opt. Wet Bar



Opt. Elevator  
Basement



Opt. Elevator  
First Floor



Opt. Fireplace



Opt. Linear Fireplace



Opt. Elevator  
Second Floor

#### OPTIONS ON A BASEMENT

Want to Know More  
About This Home?

CONTACT OUR COMMUNITY SALES MANAGER  
Call Us @ 770.521.2151