



PRICED AT
\$789,675

 2837 Sq Ft

 4 Beds

 3.5 Baths

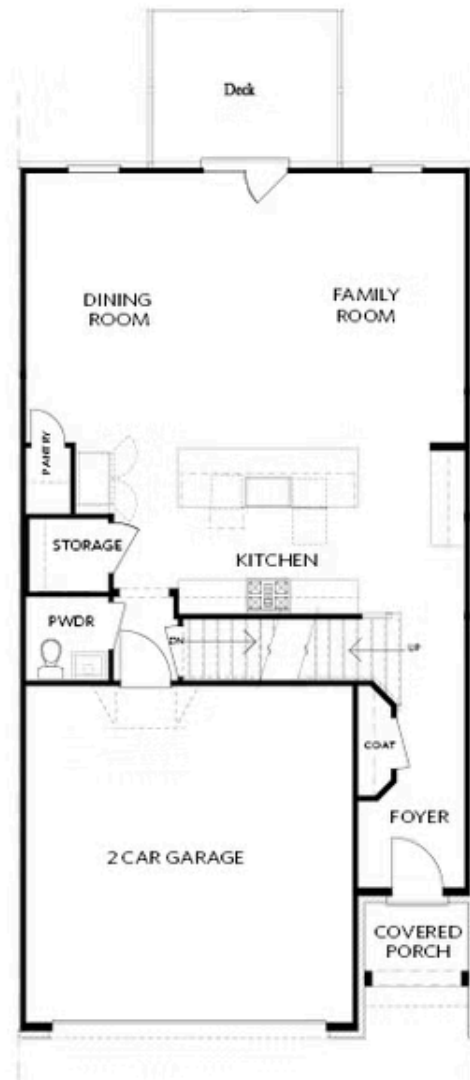
 2 Car Garage

 3.0 Story

Spring into a new home! Ward's Crossing, is a brand new gated community, located in the heart of Johns Creek, and built by The Providence Group. This is a rare opportunity for new construction townhomes in Johns Creek. The Ellington is currently under construction and will be ready for move in January/February of 2024. This floorplan features 3 story living with an option to add an elevator (pending the stage of construction). 4 bedrooms, 3.5 baths, living level on the main, two-car garage, fenced in backyard and over 2800 square feet of space! This spacious and well-appointed townhome truly lives like a single family home and is built with the highest quality and environmentally friendly products, including Thermacrete, a truly superior party wall material. Located in the heart of Johns Creek, right next to Johns Creek High School! And, State Bridge Crossing Elementary is just across the street! The location can't be beat! Give us a call today to schedule your appointment! ***Please note the photos shown are not of the exact property but are similar, as the home is currently under construction and will be completed February 2024. ***Closing cost incentive available with one of our preferred lenders.

**Want to Know More
About This Home?**

CONTACT OUR COMMUNITY SALES MANAGER
Call Us @ 770.521.2151



FIRST FLOOR

Elevation C, I, K

Want to Know More
About This Home?

CONTACT OUR COMMUNITY SALES MANAGER
Call Us @ 770.521.2151

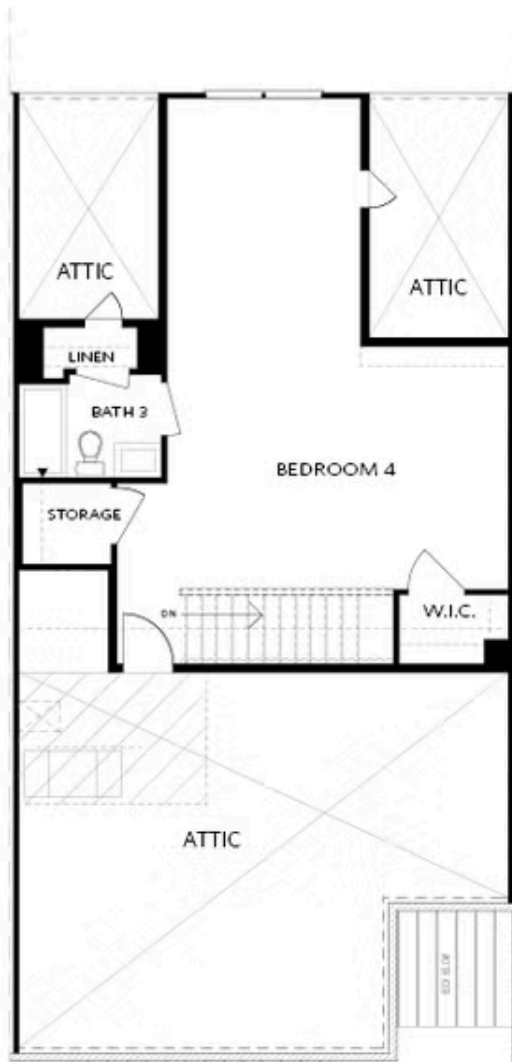


SECOND FLOOR

Elevation C, I, K

Want to Know More
About This Home?

CONTACT OUR COMMUNITY SALES MANAGER
Call Us @ 770.521.2151

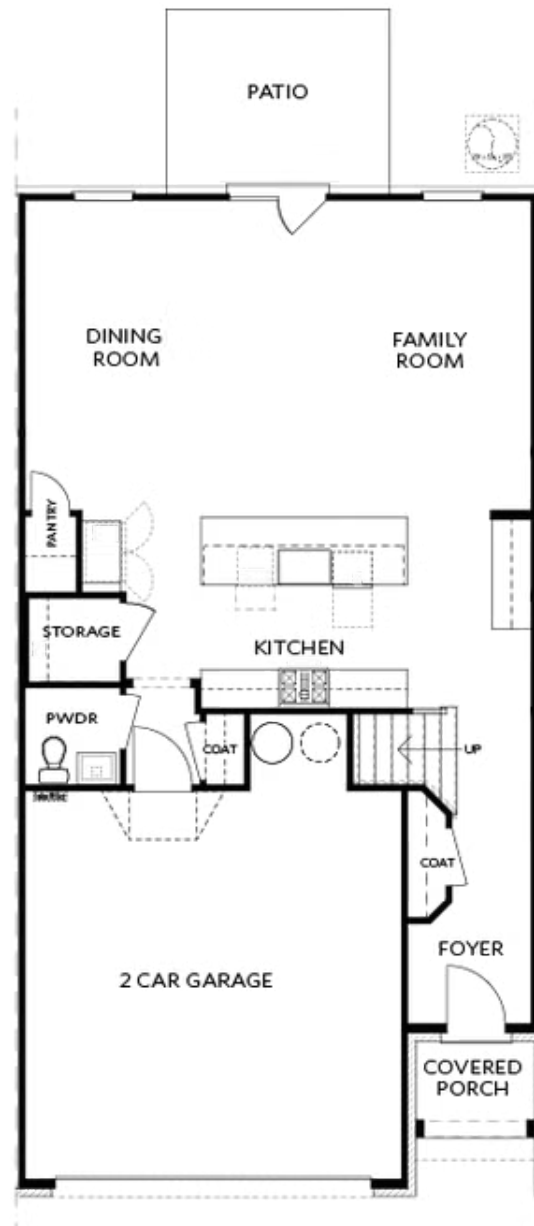


THIRD FLOOR

Elevation C, I, K

Want to Know More
About This Home?

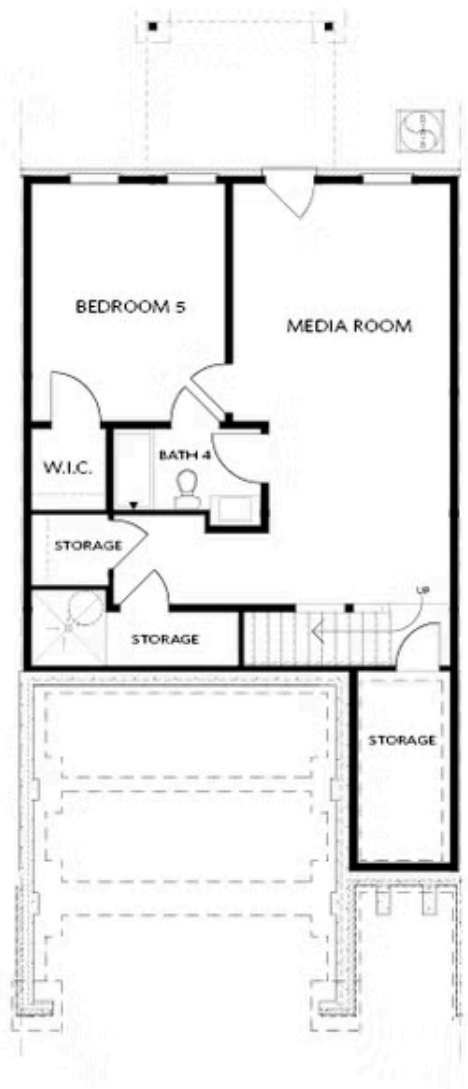
CONTACT OUR COMMUNITY SALES MANAGER
Call Us @ 770.521.2151



Elevations C, I, K

Want to Know More
About This Home?

CONTACT OUR COMMUNITY SALES MANAGER
Call Us @ 770.521.2151

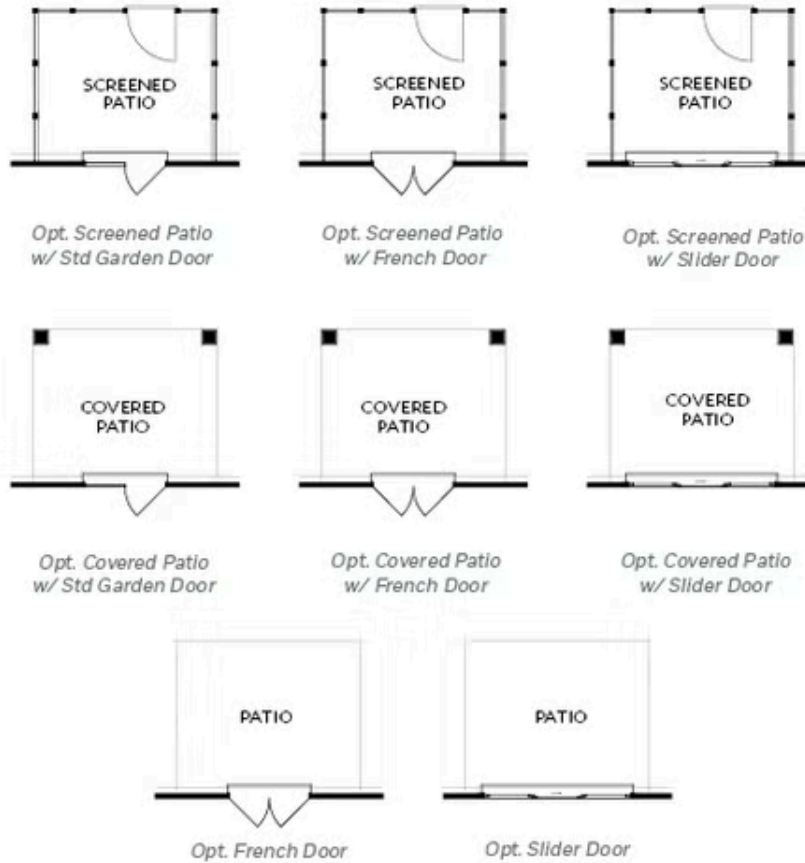


BASEMENT

Elevation C, I, K

Want to Know More
About This Home?

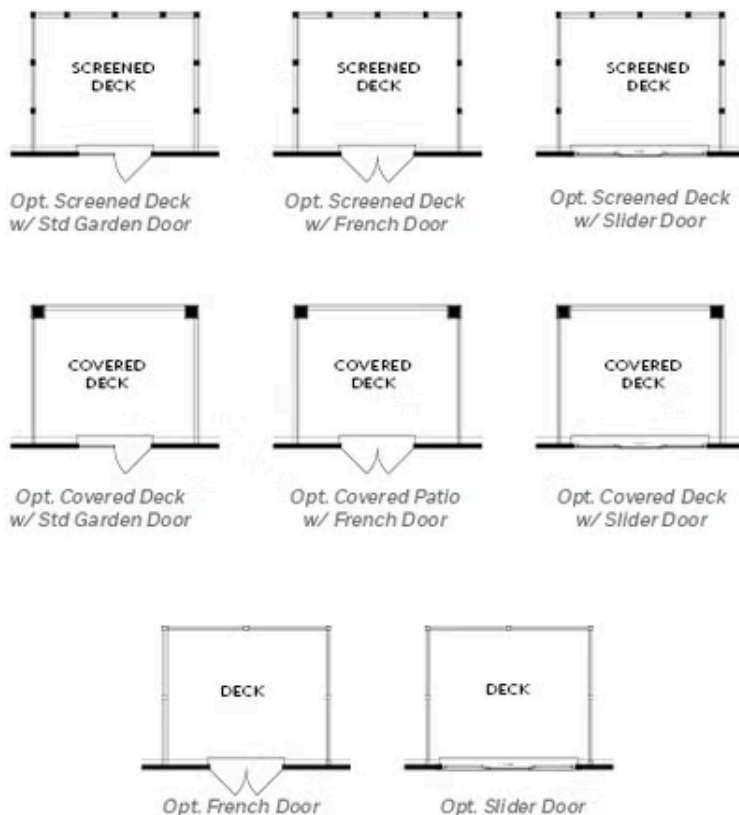
CONTACT OUR COMMUNITY SALES MANAGER
Call Us @ 770.521.2151



FIRST FLOOR
PATIO OPTIONS
ON A SLAB

Want to Know More
About This Home?

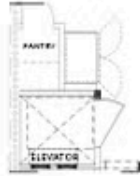
CONTACT OUR COMMUNITY SALES MANAGER
Call Us @ 770.521.2151



FIRST FLOOR
DECK OPTIONS
ON A BASEMENT

Want to Know More
About This Home?

CONTACT OUR COMMUNITY SALES MANAGER
Call Us @ 770.521.2151



Opt. Elevator
First Floor



Opt. Fireplace



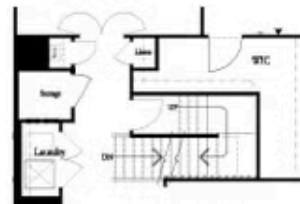
Opt. Linear Fireplace



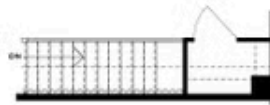
Owner's Suite & Bath
*No Trey or Vaulted Ceilings w/ 3rd Floor



Opt. Elevator
Second Floor



2nd Floor Stairs to 3rd Floor



Opt. Open Rail on 3rd Floor



Opt. Elevator
Third Floor

OPTIONS ON A SLAB WITH 3RD FLOOR

Want to Know More
About This Home?

CONTACT OUR COMMUNITY SALES MANAGER
Call Us @ 770.521.2151



Opt. Shower



Opt. Wet Bar



*Opt. Elevator
Basement*



*Opt. Elevator
First Floor*



Opt. Fireplace



Opt. Linear Fireplace



*Opt. Elevator
Second Floor*

OPTIONS ON A BASEMENT

Want to Know More
About This Home?

CONTACT OUR COMMUNITY SALES MANAGER
Call Us @ 770.521.2151