



PRICED AT  
**\$557,400**

 1564 Sq Ft

 2 Beds

 2.0 Baths

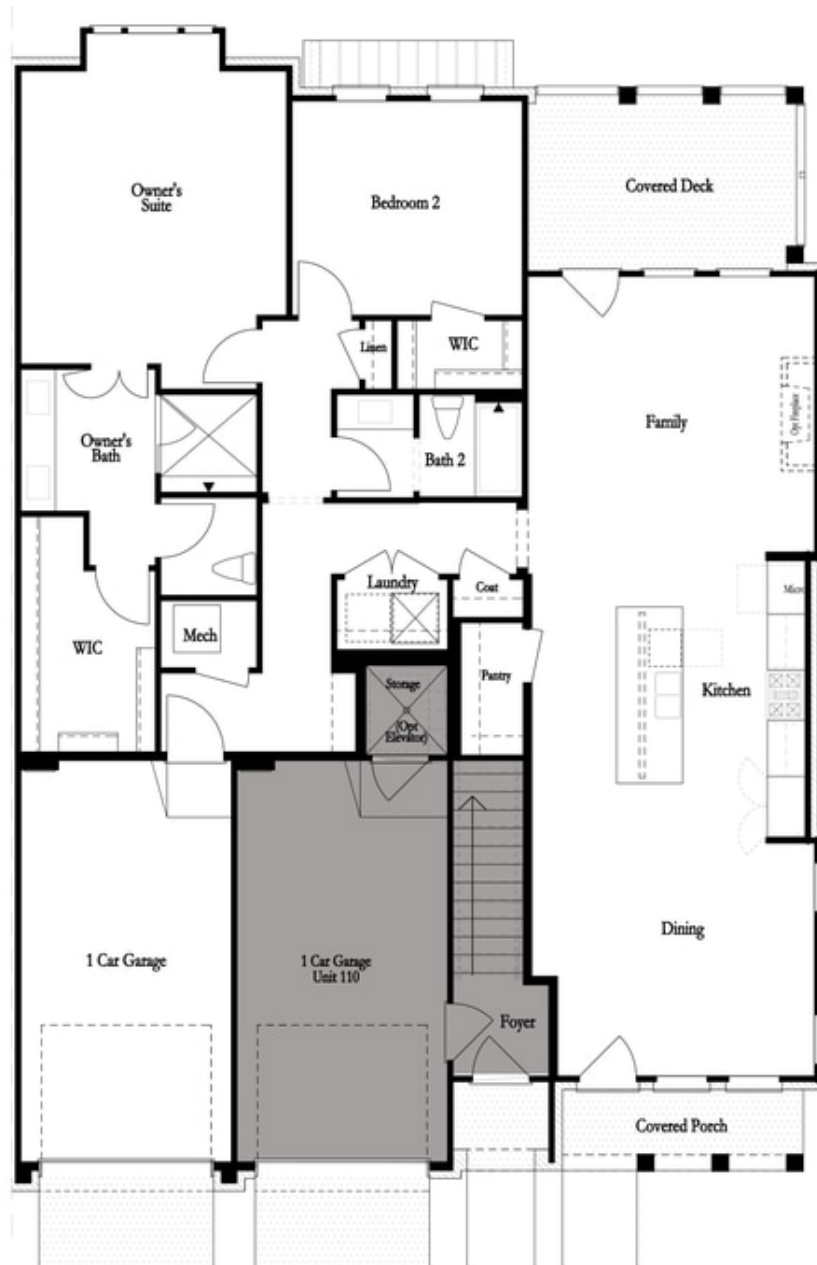
 1 Car Garage

 1.0 Story

Spring into a New Home with The Providence Group! Rare, SINGLE LEVEL LIVING in our Exclusive Waterside Community! FIRST RELEASES OF PHASE 2 - OUR SOLD OUT CONDO FLOORPLANS ARE BACK! No stairs throughout the entire home. Open concept upon entry into your front door! Dining leads to a luxury kitchen with Quartz Countertops and an upgraded GE Profile Appliance Package. Room for several barstools on the island, kitchen leads into living room and out to exquisite covered Porch. Oversized Owner's Suite with Walk-In Closet, large shower and upgrades throughout! A perfect 2-bedroom plan with ample but manageable space! Door directly to garage inside unit, resident gets use of driveway behind their garage as well! Resort-Style Amenity package open for Homeowner use - massive clubhouse with a fitness center, 4 pickleball courts, multiple fire pit areas, a pool with a pool deck looking out into the River and 3 green lawn spaces, HOA-maintained lawns, and a manned gate at the entrance. Amenities make meeting your neighbors and friends easy. Don't let this one miss you! Photos do not represent the actual home. For driving directions, you can use 4411 E. Jones Bridge Road, Peachtree Corners, GA 30092.

**Want to Know More  
About This Home?**

CONTACT OUR COMMUNITY SALES MANAGER  
Call Us @ 470.514.6999



**Want to Know More  
About This Home?**

CONTACT OUR COMMUNITY SALES MANAGER  
Call Us @ 470.514.6999



**Want to Know More  
About This Home?**

CONTACT OUR COMMUNITY SALES MANAGER  
Call Us @ 470.514.6999