



PRICED AT
\$680,900

 2520 Sq Ft

 3 Beds

 2.0 Baths

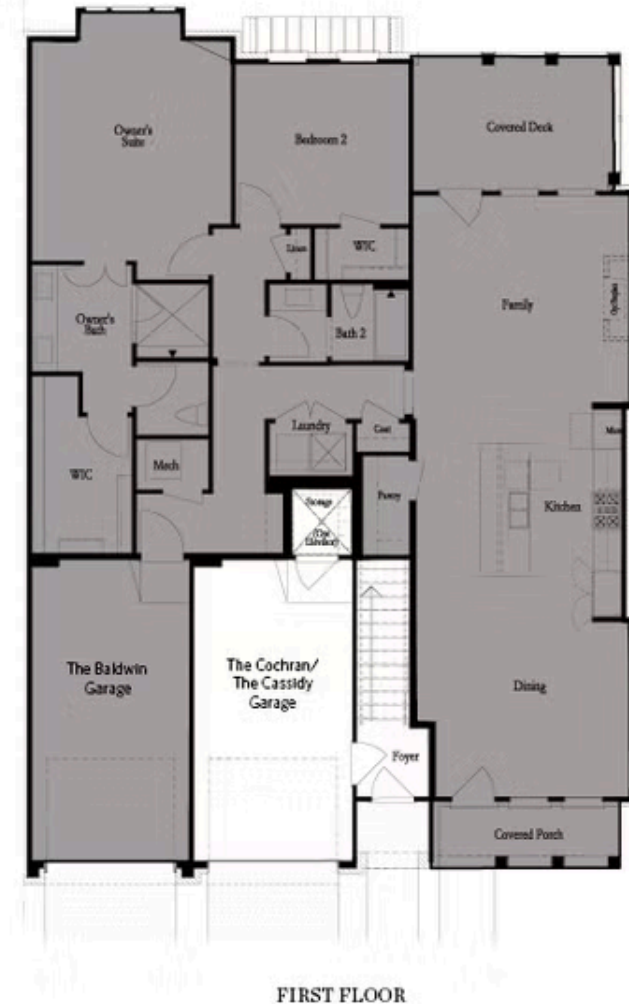
 1 Car Garage

 1.0 Story

Fall into Savings with \$20,000- use it towards low rates, upgrades, appliances, closing costs & More. Ends September 30, 2025. SINGLE LEVEL LIVING with option of personal elevator to bypass one set of stairs to enter property. All units receive upgraded GE Profile Appliance Package including New State of the Art GE Profile Induction Electric Ranges. Room for several barstools on the island, kitchen leads into living room, all exterior taken care of by the HOA. Spend evenings on your outdoor covered patio with access directly to Owners Suite. Oversized Owner's Suite with Walk-In Closet, large shower, freestanding tub and upgrades throughout! Secondary bedrooms great for office or guest space. Door directly to garage inside unit, resident gets use of driveway behind their garage as well! Enduring Gray Top-Level Design Package. Resort-Style Amenity package open for Homeowner use - NEW clubhouse with a fitness center, 4 pickleball courts, multiple fire pit areas, a pool with a pool deck looking out into the River and 3 green lawn spaces, HOA-maintained lawns, and gate at entrance. Amenities make meeting your neighbors and friends easy. LOCATION, LOCATION, LOCATION! Less than 1 mile to The Forum Shopping Center & Peachtree Corners Towne Center. Don't let ...

**Want to Know More
About This Home?**

CONTACT OUR COMMUNITY SALES MANAGER
Call Us @ 470.514.6999



Want to Know More
About This Home?

CONTACT OUR COMMUNITY SALES MANAGER
Call Us @ 470.514.6999



SECOND FLOOR - LEFT END UNIT

Want to Know More
About This Home?

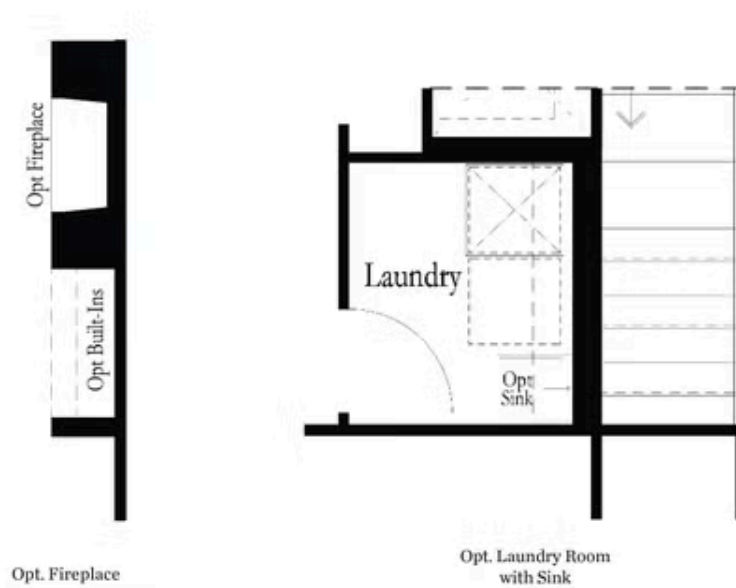
CONTACT OUR COMMUNITY SALES MANAGER
Call Us @ 470.514.6999



SECOND FLOOR - RIGHT END UNIT

Want to Know More
About This Home?

CONTACT OUR COMMUNITY SALES MANAGER
Call Us @ 470.514.6999



Want to Know More
About This Home?

CONTACT OUR COMMUNITY SALES MANAGER
Call Us @ 470.514.6999