



PRICED AT  
**\$669,900**

 **2008 Sq Ft**

 **3 Beds**

 **2.0 Baths**

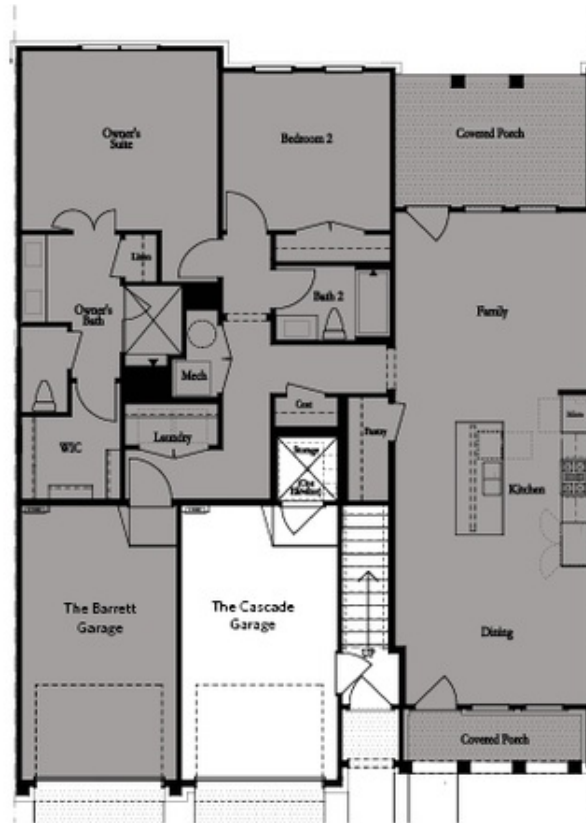
 **1 Car Garage**

 **2.0 Story**

**Spring into a New Home with \$20,000 anyway! Move-in ready! Welcome to Waterside a Gated Master planned community nestled on the Chattahoochee River! The Cascade at homesite 257 offers luxurious, single-level living in exclusive Waterside by The Providence Group! As you enter the condo, you are greeted by a spacious open concept living area that seamlessly combines the family room, kitchen and dining space. The attention to design detail is displayed throughout, from the modern kitchen with stainless appliances, quartz countertops, Alabaster cabinets and a contrasting, driftwood stained island with stainless hardware and faucet. The family room serves as the heart of the home with its stylish linear fireplace- offering ample space for relaxation and entertainment. A door off of family room leads to a covered porch for enjoying the outdoors. The condo features 3 well appointed bedrooms with elevated ceiling heights that adds to the sense of luxury and comfort. The primary bedroom is located opposite the 2 secondary bedrooms offering added tranquility. The generous primary bedroom has a sitting area to give a quiet, private space for reading or lounging. Luxury continues to the primary bath with a frameless, tile shower and a freestanding tub for the ultimate ...**

**Want to Know More  
About This Home?**

**CONTACT OUR COMMUNITY SALES MANAGER  
Call Us @ 470.514.6999**



Garage Level

Want to Know More  
About This Home?

CONTACT OUR COMMUNITY SALES MANAGER  
Call Us @ 470.514.6999



Want to Know More  
About This Home?

CONTACT OUR COMMUNITY SALES MANAGER  
Call Us @ 470.514.6999