




PRICED AT  
**\$569,900**

 1406 Sq Ft

 2 Beds

 2.0 Baths

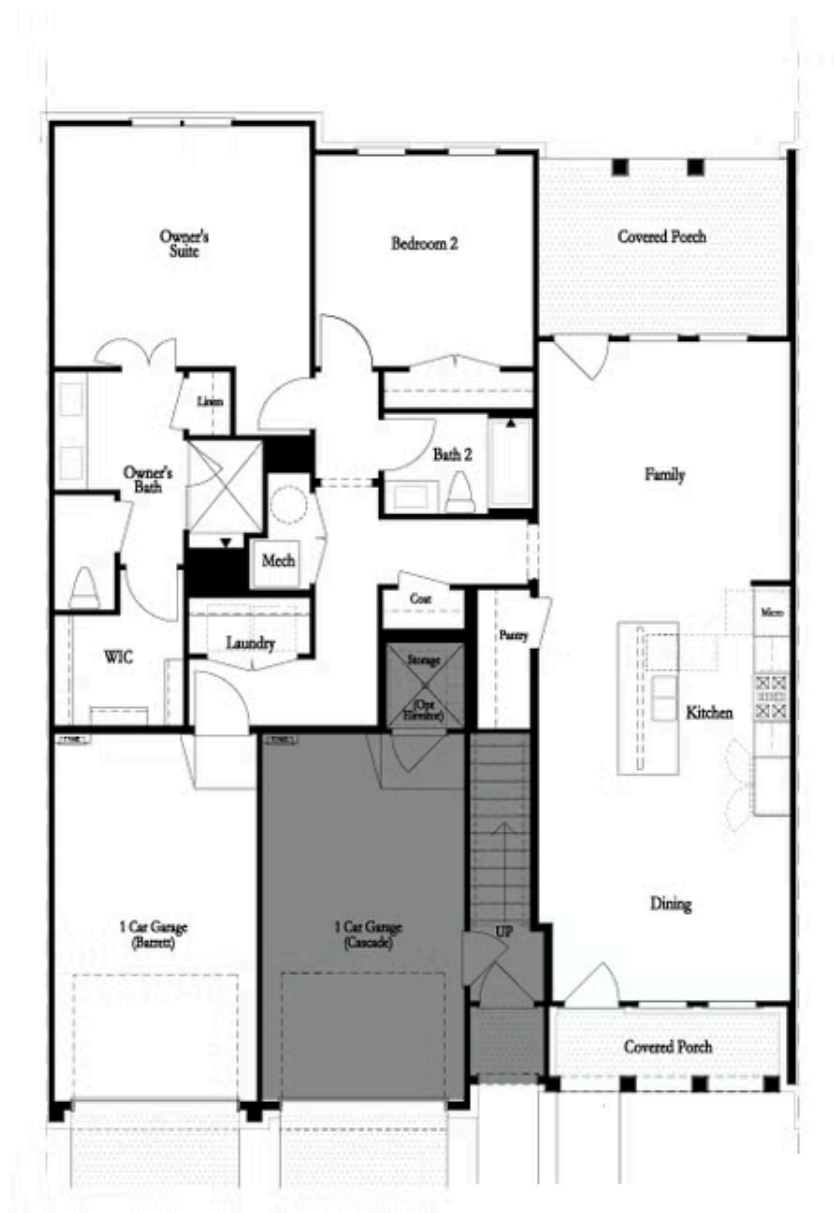
 1 Car Garage

 1.0 Story

New Year, New Home, New You! SINGLE LEVEL LIVING in Peachtree Corners - No stairs throughout the entire home! 2 bedroom/2 bathroom condo flat with FENCED IN yard and garage! Open concept upon entry into your front door. Enduring Grey Design Package: White Quartz Countertops and upgraded GE Profile Appliances. Cool tones in LVP Flooring (easy, low-maintenance) and backsplash tile. Room for several barstools on the island, kitchen leads into living room and out to exquisite fenced in front yard, all taken care of by the HOA. RARE, PRIVATE YARD in phenomenal location on the edge of the property! Spend evenings on your all-brick outdoor covered patio winding down! Oversized Owner's Suite with Walk-In Closet, large shower and dual vanity! Windows in Owners Suite overlooking wooded location. Double doors leading into Owners bathroom and closet - separate toilet cavity. Secondary Bedroom also has private view. Hall bathroom for guest use with tub included. Also, a condo with a garage! Garage Door directly inside unit, resident gets use of driveway behind their garage as well! Location of this building is close to guest parking and close to the amenities! Resort-Style Amenity package open for Homeowner use - NEW clubhouse with a ...

**Want to Know More  
About This Home?**

CONTACT OUR COMMUNITY SALES MANAGER  
Call Us @ 470.514.6999



Want to Know More  
About This Home?

CONTACT OUR COMMUNITY SALES MANAGER  
Call Us @ 470.514.6999