

PRICED AT
\$635,900

 2008 Sq Ft

 3 Beds

 2.0 Baths

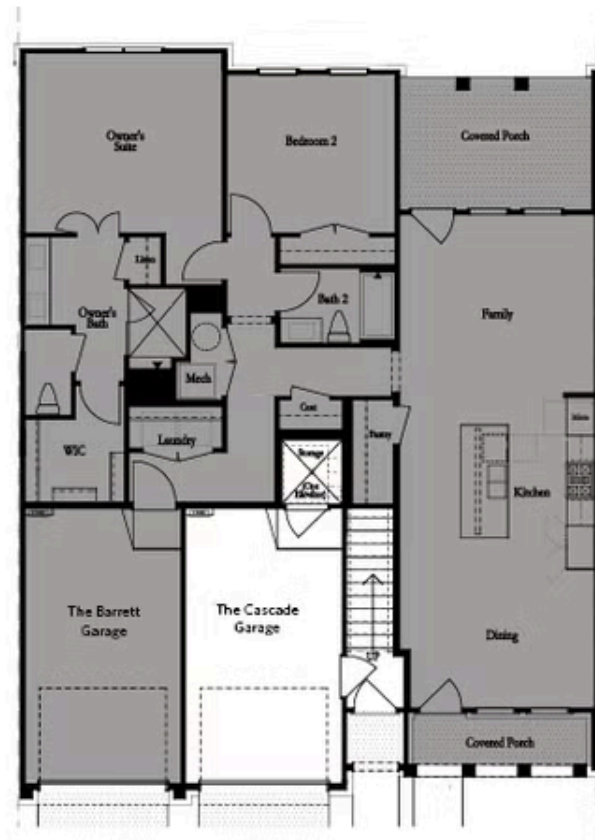
 1 Car Garage

 2.0 Story

Your Home, Your Way with \$25K. Customize your home buying journey – use it toward low rates, appliances, closing costs & more. Ends August 31, 2025 Move-in ready! Welcome to Waterside a Gated Master planned community nestled on the Chattahoochee River! The Cascade at homesite 239 offers luxurious, single-level living in exclusive Waterside by The Providence Group! As you enter the condo, you are greeted by a spacious open concept living area that seamlessly combines the family room, kitchen and dining space. The attention to design detail is displayed throughout, from the modern kitchen with stainless appliances, quartz countertops, Linen cabinets and a contrasting, grey stained island with stainless hardware and faucet. The family room serves as the heart of the home with its stylish linear fireplace- offering ample space for relaxation and entertainment. A door off of family room leads to a covered porch for enjoying the outdoors. The condo features 3 well appointed bedrooms with elevated ceiling heights that adds to the sense of luxury and comfort. The primary bedroom is located opposite the 2 secondary bedrooms offering added tranquility. The generous primary bedroom has a sitting area to give a quiet, private space for reading or lounging. ...

**Want to Know More
About This Home?**

CONTACT OUR COMMUNITY SALES MANAGER
Call Us @ 470.514.6999



Garage Level

Want to Know More
About This Home?

CONTACT OUR COMMUNITY SALES MANAGER
Call Us @ 470.514.6999



Want to Know More
About This Home?

CONTACT OUR COMMUNITY SALES MANAGER
Call Us @ 470.514.6999