



PRICED AT
\$569,900

 1406 Sq Ft

 2 Beds

 2.0 Baths

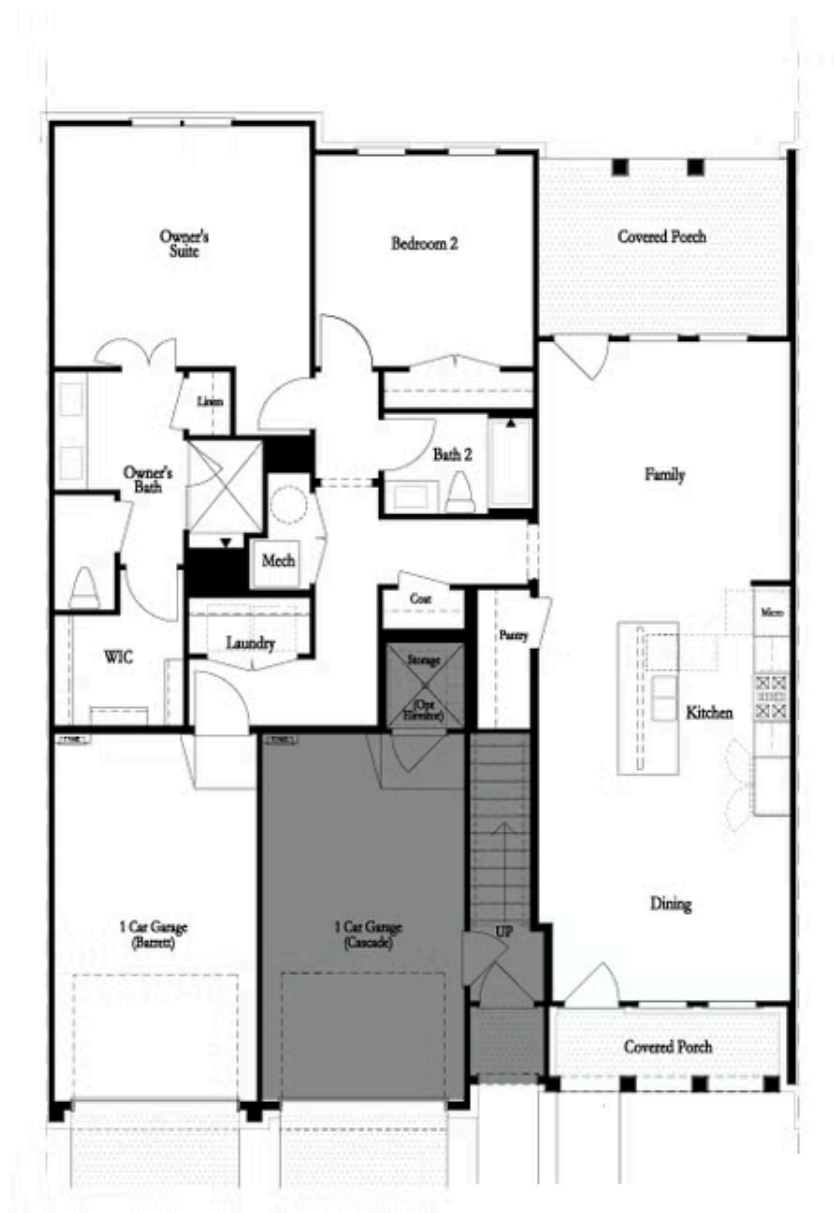
 1 Car Garage

 1.0 Story

New Year, New Home, New You with The Providence Group! \$10,000 any way for contracts written by January 31, 2025. Waterside is a Master Planned Community in the vibrant city of Peachtree Corners, situated along the Chattahoochee River! Introducing The Barrett- Brand New plan! No stairs throughout the entire home. Open concept upon entry into your front door. Rare, **SINGLE LEVEL LIVING!** Soaring ceilings throughout. Dining leads to a gorgeous kitchen with Calacatta Laza Oro quartz countertops featuring a warm blend of gray and gold veining, and the brushed gold faucet and hardware contribute to the modern design. Alabaster cabinets and a Driftwood stained island compliment the kitchen, and an upgraded GE Profile Appliance Package are included. The kitchen leads into a cozy living room and out to your covered porch, that spills into your private rear yard. Lovely Owner's Suite with walk-in closet. The Owner's bath includes a large walk-in shower and upgrades throughout, such as Arctic White Quartz countertops and driftwood cabinets. This wonderful 2-bedroom plan has the perfect amount of space. Connected garage with access inside the home and a driveway long enough for a second car. If you're looking for the outdoors in a community, look ...

**Want to Know More
About This Home?**

CONTACT OUR COMMUNITY SALES MANAGER
Call Us @ 470.514.6999



Want to Know More
About This Home?

CONTACT OUR COMMUNITY SALES MANAGER
Call Us @ 470.514.6999