

PRICED AT
\$606,150

 2520 Sq Ft

 3 Beds

 2.0 Baths

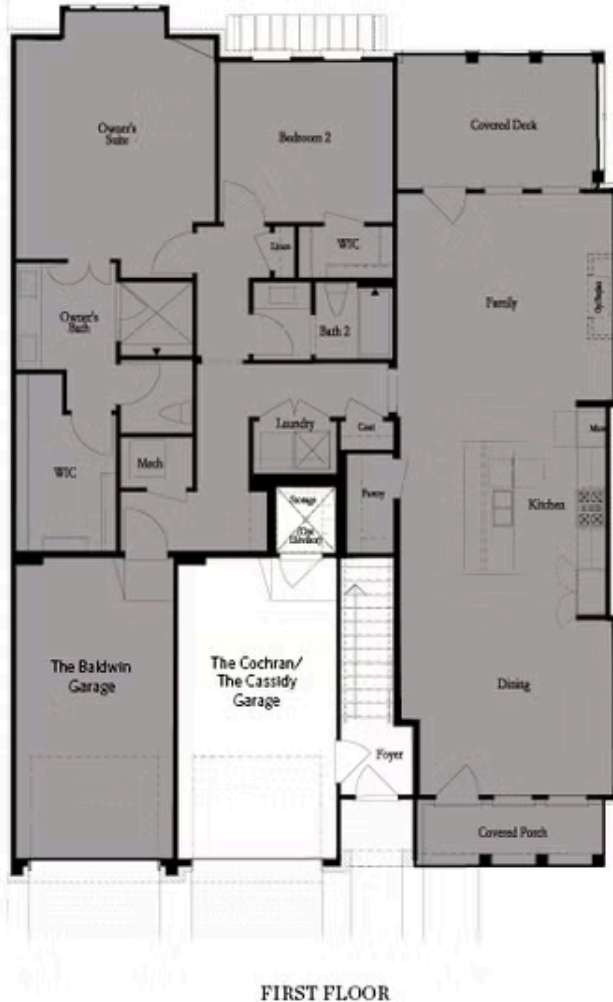
 1 Car Garage

 2.0 Story

Elevate your life in 2023 with a new home by The Providence Group and \$5,000 towards closing cost when financing with one of Seller's 4 preferred lenders. Location and Style are waiting for you in this 3-bedroom MASSIVE Condo along the Chattahoochee River! RARE ONE-LEVEL LIVING! 2520 SQ FT on ONE LEVEL! Welcome to The Cassidy Floorplan brought to you by The Providence Group. Limited Availability, these will not last!! One staircase to get to your individual unit OR personal elevator inside garage. Open the door to a spacious living room w/fireplace, large kitchen w/entertaining island and dining area. Oversized Owner's Suite accompanied by Owner's Bathroom with Freestanding Tub, Huge Frameless Shower, His & Hers Separate Walk-In Closets! Covered balcony on the back to enjoy some outdoor relaxation. Come check out this great way to live! The Baldwin is located in a New Gated Master Planned Community, surrounded by beautiful trees! Only one mile from the Forum and right beside E Jones Bridge Park. Amenities w/Swim, fitness, parks, clubhouse, pickle ball courts, walking trails by the Chattahoochee River etc. Photos do not represent the actual home. For driving directions, you can use 4411 E. Jones Bridge Road, Peachtree Corners, GA ...

**Want to Know More
About This Home?**

CONTACT OUR COMMUNITY SALES MANAGER
Call Us @ 470.514.6999



Want to Know More
About This Home?

CONTACT OUR COMMUNITY SALES MANAGER
Call Us @ 470.514.6999



SECOND FLOOR

Want to Know More
About This Home?

CONTACT OUR COMMUNITY SALES MANAGER
Call Us @ 470.514.6999



Opt. Fireplace



Opt. Laundry Room
with Sink

OPTIONS

Want to Know More
About This Home?

CONTACT OUR COMMUNITY SALES MANAGER
Call Us @ 470.514.6999